



*Advanced Flow*  
DOUBLE ELECTRIC  
BREAST PUMP

Hospital Grade, 3 Phase Expression



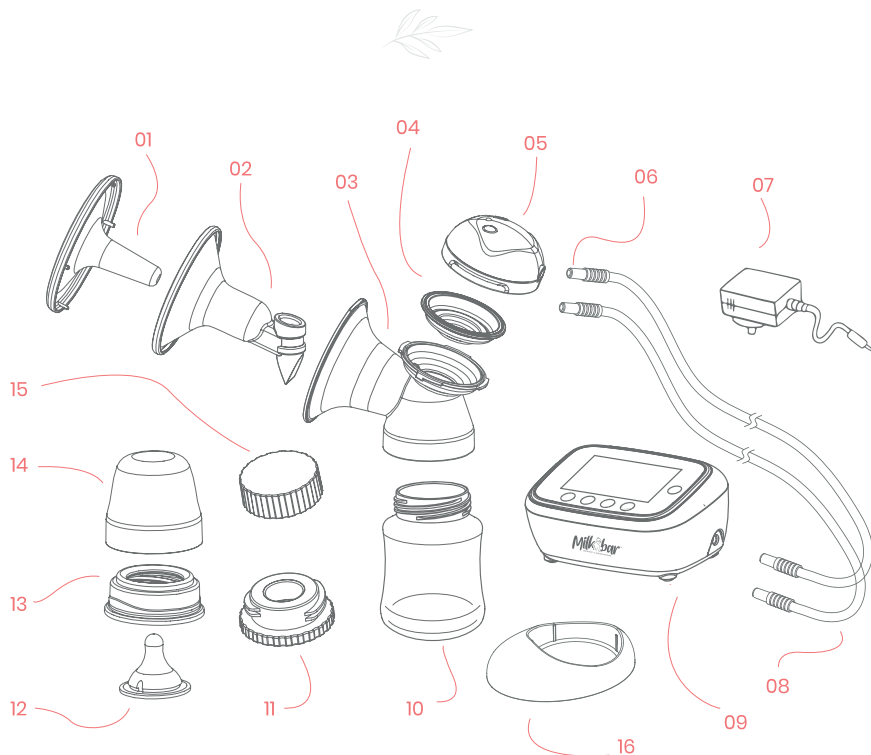
Welcome to the Milkbar  
family, Mama



You've got this

# Parts & DESCRIPTIONS

GET TO KNOW YOUR PUMP BEFORE USING IT. INSPECT ALL PARTS, AND MAKE SURE YOU HAVE EVERYTHING BEFORE YOU BEGIN.



- |                           |                          |
|---------------------------|--------------------------|
| 01. Dust Cover x2         | 09. Pump Unit x1         |
| 02. All-in-One insert     | 10. Wide Neck Bottle x2  |
| 03. Breast Shield Body x2 | 11. Bottle Adapter x2    |
| 04. Diaphragm x2          | 12. Nipple x2            |
| 05. Cap x2                | 13. Disc collar x2       |
| 06. Tubing Connector x4   | 14. Nipple Dust Cover x2 |
| 07. Power Adapter x1      | 15. Bottle Lid x2        |
| 08. Tubing x2             | 16. Bottle stand x2      |

\*Plus spare parts: 2x tubing and 2x tubing connectors.

# How to Clean YOUR PUMP



## FIRST TIME USE

- Disassemble the parts that come in contact with the breast and breast milk. (Parts; 02, 03, 04, 10)
- Wash all of them in warm soapy water, using liquid household detergent.
- Rinse each piece thoroughly with warm water for 10 to 15 seconds.
- Sterilize parts using:
  - ~ Boiling water for five minutes,
  - ~ A microwave sterilizer as per individual instructions,
  - ~ Milton Solution as per individual instructions,\*
  - ~ A UV sterilizer as per individual instructions.

## HOW TO CLEAN

- Rinse each part that comes in contact with the body and/or milk with cool water immediately after pumping. This avoids build up of milk residue in the collection bottles and parts to avoid the growth of any bacteria.
- Parts of the pump that come into contact with breast milk are the *silicone insert, diaphragm cup, breast shield body, bottle*. Wash all of them in warm soapy water using any liquid household detergent. Bottle parts such as *nipple, nipple cover, disc collar and bottle lid* will also need cleaning if used.
- Carefully use a separate cleaning sponge and bottle brush with a smaller brush to reach the tiny nooks of the pump. Wash the parts separately from other dishes pots and pans etc.
- Rinse each piece thoroughly with warm water for 10 to 15 seconds. Sanitize parts using a sterilization method of your choice every use, but for no more than 5 minutes.
- Always check parts for wear and tear, particularly the valve opening of the silicone insert.

TIP - use a designated bottle drying rack, to ensure all parts stay together and don't get lost. Any replacement parts can be purchased from [milkbarnewzealand.com](http://milkbarnewzealand.com)

\*not recommended for silicone parts



## IMPORTANT PLEASE NOTE

PLEASE ENSURE YOU STERILISE ALL PARTS OF THE PUMP THAT COME INTO CONTACT WITH BREAST MILK, PRIOR TO EACH USE.

The silicone insert, diaphragm cup, breast shield body, bottle, bottle lid, nipple, nipple cover and disc collar must all be cleaned and sterilised before each use.

## CARE OF PARTS

- Excessive and frequent boiling or exposure to heat may cause wear and tear to the plastic bottles and silicone parts which can be replaced via [milkbarnewzealand.com](http://milkbarnewzealand.com)
- Replace worn out or damaged parts immediately as this may affect suction.
- Parts may be washed in the dishwasher using the top rack. Place all the clean parts on top of a paper towel or hang on a drying rack and allowed to air dry.
- Avoid using cloth towels, as they can carry germs and bacteria that may contaminate breast milk.
- Ensure all parts are completely dry before use – wet or damp parts will cause poor suction. Once parts are completely dry, reassemble the breast shield set.

## CLEANING THE TUBES

- Milkbar breast pump has a closed system, therefore cleaning the tubes is not necessary. If you happen to see moisture in the tubes after pumping, remove the tubes from the breast shields. Turn the motor on for a few minutes until the moisture has gone. If milk enters the tubing and breast pump unit, contact [info@milkbarnewzealand.com](mailto:info@milkbarnewzealand.com) for assistance.

## CLEANING THE MOTOR

- Sanitise the pump motor using disinfectant wipes, wipe the tubing connector from time to time.

## SAFETY RECOMMENDATIONS

- Wash your hands prior to touching the breast pump and the breast pump parts.
- Avoid touching the inner part of the collection bottle where milk comes in contact.
- Wash all parts that come in contact with your breast and breast milk immediately after each use, to avoid the growth of any bacteria from milk residue
- Electrical units must never be exposed to water or other liquids for cleaning. It must not be sterilised in a microwave steriliser.

# Safe Use OF YOUR PUMP

**IF YOU ARE A MOTHER WHO IS INFECTED WITH HEPATITIS B, HEPATITIS C OR HUMAN IMMUNODEFICIENCY VIRUS (HIV), PUMPING BREAST MILK WILL NOT REDUCE OR REMOVE THE RISK OF TRANSMITTING THE VIRUS TO YOUR BABY THROUGH YOUR BREAST MILK.**



## GENERAL WARNINGS

- Power adaptor is a part of the breast pump. Do not use any other power cords.
- Always unplug electrical device immediately after use.
- Do not use while bathing.
- Do not place or store device where it can be submerged in water.
- Do not reach for your device if it has fallen in water, immediately unplug from the electrical outlet.
- Do not leave the device unattended when plugged into an electrical outlet.
- Do not position the breast pump such that it is difficult to disconnect the adaptor plug from the main power supply.
- Close supervision is necessary when using near children or people with disabilities.
- Use product only for its intended use. Do not use attachments not recommended by manufacturer.
- Keep all cords away from heated surfaces.
- Never use while sleepy or drowsy.
- Never drop or insert objects into any openings or tubes.
- Always inspect power adaptor and batteries prior to use for damaged or exposed wires. If damage is found, immediately discontinue use of power adaptor.
- Do not operate while driving a vehicle.

## PRECAUTIONS

- Plastic bottles and component parts become brittle when frozen, and may break when dropped.
- Take appropriate care in handling bottles and components.
- Do not use the breast milk if bottles or components become damaged.

**WARNINGS TO  
AVOID HEALTH RISK  
AND REDUCE THE  
RISK OF INJURY**

- This device is a closed system breast pump. Milk collection kit must not be shared between users.
- Use only under medical recommendation while pregnant.
- Clean and sanitise all parts that come in contact with your breasts and breast milk prior to first use. Wash all parts that come in contact with your breasts and breast milk after every use.
- Inspect all appropriate pump components before each use.
- Do not thaw frozen breast milk in a microwave or a pan of boiling water.
- If tube becomes moldy, discontinue use and replace tube.
- If breast milk backup occurs, clean the tube before your next pumping session.

**WARNINGS TO  
AVOID MINOR  
INJURY**

- Do not wrap cord around adaptor body.
- Use only the power adaptor that comes with the Milkbar Advanced Flow Double Electric Breast Pump.
- Do not shorten tube.
- Make sure the voltage of the power adaptor is compatible with the power source.
- Plug the power adaptor into the breast pump first, then into the power source.
- Do not attempt to remove the breast shield from your breast while pumping. Turn the breast pump off and break the seal between your breast and the breast shield with your finger, then remove the breast shield from your breast.
- If pumping is uncomfortable or causing pain, turn the unit off, break the seal between the breast and the breast shield with your finger, and remove breast shield from your breast.

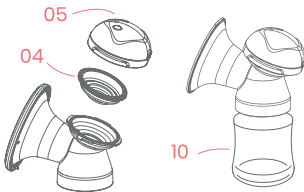
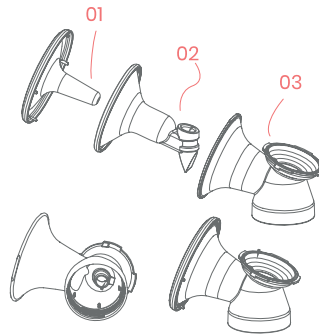
# Preparing YOUR PUMP

**YOUR MILKBAR ADVANCED FLOW DOUBLE ELECTRIC PUMP COMES PRE-ASSEMBLED HOWEVER YOU NEED TO CLEAN IT AND REASSEMBLE IT AFTER CLEANING BEFORE FIRST USE.**

Parts that come directly into contact with breastmilk such as silicone insert, diaphragm, breast shield body and bottle all must be cleaned and sterilised before use.

## ASSEMBLING THE MILK COLLECTION KIT

1. Insert silicone insert and valve (02) into Breast shield body (03).
2. Do not hold the "V" part of the silicone insert as this part is delicate. Hold the thicker silicone above the valve and attach the round part of the breast shield body.
3. Seal the outer silicone shield over the rim of the breast shield body flange.
4. Dust cover (01) can then be inserted into the silicone insert if storing
5. Remove the dust cover before use.



## ASSEMBLING DIAPHRAGM

1. Insert diaphragm (04) into the top of breast shield body
2. Then attach the cap (05) firmly to prevent air leaks.
3. Twist the bottle (10) into the breast shield body, securing it tightly.

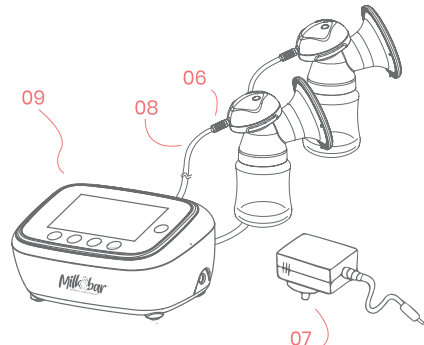
## ASSEMBLING PUMP UNIT AND MILK COLLECTION KIT

Connect one end of the tube connector (06) with the air vent of the cap (05) and the other end with the pump unit (09).

## ASSEMBLING PUMP UNIT AND ADAPTER

Connect the power adapter with pump unit (09), then plug the adapter (07) into the electrical socket.

Once it is connected with power source, the display screen will flash to hint that it is on standby.



# *How to operate your* MILKBAR ADVANCED FLOW BREAST PUMP



## BEFORE YOU START

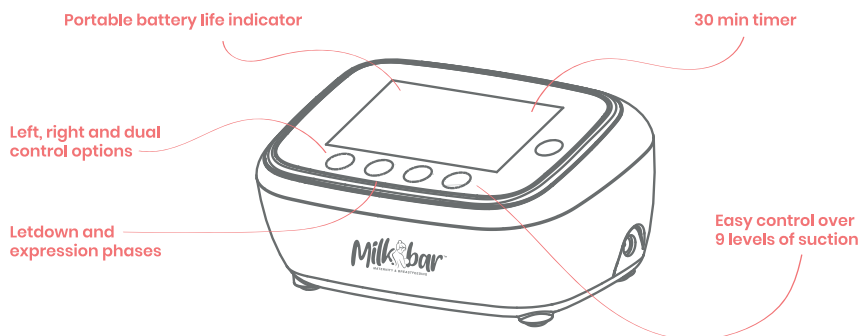
- On first receiving your Milkbar Advanced flow, connect the power adaptor to the pump unit and fully charge the pump unit. This will take around 3–4 hours.
- A full charge is indicated by the battery icon on the LCD display. After the lithium-ion battery is fully charged you can use the pump without being attached to a power socket. You can also operate the pump whilst charging if you wish to do so. The pump will operate for 1.5 hours on a fully charged battery.
- Inspect breast shields, silicone cushions and tubing connectors for damage before using your breast pump.
- Ensure every part is attached properly and securely.
- Check there is no moisture in any parts of the collection kit.

## KEEP IN MIND


- If at any time you feel pain and discomfort, or if you're not able to express milk, consult a breastfeeding specialist.
- Do not try to express with a vacuum level that is too high, this may result in discomfort, pain and less milk output.
- Low or no suction does not always mean something is wrong with your breast pump. Check all parts to ensure they are connected correctly and there is no moisture in any of the tubes or parts.

## USING YOUR PUMP




- Plug the power adaptor cord to the power outlet.
- Place the breast shield over your breast so that your nipple is properly centred in the suction kit. Make sure that you have the right flange size that matches your nipple size.
- When ready, press the power button to switch the device on. Ensure underside switch is 'ON' for portable use.
- Once the device is turned on the timer will show 30 minutes (default), and stimulation phase will begin on suction level 1 on both breasts simultaneously. This is the rapid mode designed to mimic your baby's initial feeding motion to stimulate your milk ejection reflex (MER).
- Milkbar Advanced Flow has a pumping motion designed to massage, squeeze, and suck just like an infant. This breast pump model has an independent suction control feature so you may adjust the suction level of each breast independently.



### USING YOUR PUMP

- Once your milk is flowing and your letdown has been stimulated, you may manually press the expression button  to switch between stimulation and expression and back again.
- Expression mode is set at suction level 1 by default – you may adjust the suction level according to your need. Expression mode is a slower motion with deeper sucking, which is how an infant sucks after the breasts have released a good flow of breast milk.
- Adjust the suction level according to what's comfortable for you, using the + or - buttons. The best way to find your suited level is to increase the suction until you feel discomfort, then decrease the level by one until you're comfortable. You should not feel any discomfort while using the Advanced Flow Double Electric Breast Pump.
- If required, adjust suction level independently using left, right and dual control options.

### BATTERY INDICATIONS

- When the pump is being used with the lithium-ion battery power, the battery power indicator will provide a real-time display of your battery status: .
- When the pump is in use through the A/C adaptor and is in a charging state, The battery power indicator will provide a real-time display of the charging status and the battery power level: .
- When the battery power runs out the indicator will flash: .
- The battery power switch is at the bottom of the pump unit. Make sure this is on if you want to use a pump using the lithium-ion battery and not the A/C adaptor.
- To save battery life turn the main switch off if you have finished expressing.
- Best practice is to allow the battery to drain completely before charging to extend the lithium ion battery life.

#### AFTER EACH PUMPING SESSION

- Date your container.
- Name your container if breast milk is being given to a childcare provider.
- Refrigerate or chill your milk right after pumping unless using within 2 hours.

#### STORING BREAST MILK

- Breast milk can be stored in clean BPA-free plastic bottles with tight fitting lids.
- You can store in our BPA-free Milkbar breast storage bags or other BPA-free storage bags.
- Never store milk on the shelves of your refrigerator door

#### FREEZING BREAST MILK

- Leave an inch of space at the top of a container as milk expands as it freezes.
- Store milk at the back of your freezer.
- Do not store milk on the shelves of the freezer door.

#### THAWING AND WARMING BREAST MILK

- Use the oldest stored breast milk first.
- Breast milk does not need to be warmed – it can be served at room temperature or cold if preferred.
- Gently swirl the container to mix the breast milk – it is normal for breast milk to separate.
- Do not shake breast milk.
- If warming, swirl and test breast milk temperature by dropping some onto your wrist to make sure it's not too warm for baby.
- Thaw frozen milk in the refrigerator overnight or by running under warm water. You may also thaw milk in a container of warm water.
- Never microwave breast milk. Microwaving creates hotspots which can burn your baby's mouth.
- Use thawed breast milk within 24 hours.

# Troubleshooting YOUR PUMP

**IF YOU EXPERIENCE PAIN OR DISCOMFORT FROM PUMPING, STOP IMMEDIATELY AND CONSULT A BREASTFEEDING SPECIALIST OR LACTATION CONSULTANT. IMPROPER USE OF BREAST PUMP MAY RESULT IN BREAST TISSUE DAMAGE OR MASTITIS.**

## WEAK OR NO SUCTION

- Check all parts are completely dry.
- Frequent use or improper cleaning or sterilising can cause aging of the silicone insert. If the silicone insert has aged or been damaged, replace immediately.
- Worn out valves can cause poor suction. Replace immediately.
- Ensure the silicone insert is fitted tightly into the breast shield. The silicone inserts have edges that should mould perfectly across the plastic brace. Inserts that are not snugly attached will cause poor suction.
- Ensure the diaphragm is properly seated in the breast shield body.
- Check all connections are tight, so there are no air leaks.
- Check the tubes are not wet, damp, bent or twisted – tubes must be straight to ensure proper airflow.
- Make sure there is no dried milk residue in the tubes. If you notice any milk residue follow proper cleaning instructions found in this manual.
- Check the diaphragm is well seated and cap is tightly fastened into the breast shield body.
- Check the tubing connector is connected well with the tubes, the breast pump motor, and the breast shield.

*All the above instructions must be followed – failure to do so will lead to a weak suction or no suction at all. Please check our troubleshooting videos online or contact [info@milkbarnnewzealand.com](mailto:info@milkbarnnewzealand.com) if you require further assistance.*

## BREAST PUMP IS WORKING BUT NO BREAST MILK IS COMING OUT

- You may be experiencing engorgement. Place a warm towel on the engorged breast.
- Use your thumb to massage from the bottom of your breast up to your nipple for 10 to 15 minutes. Try doing this before starting a pumping session.
- You might have an abundance of milk. Using your hand try to squeeze some milk out before using the breast pump.
- It is recommended to pump every 2 to 3 hours if exclusively expressing. It is recommended to pump on each breast for 15 minutes according to your milk secretion.



- Do not pump for more than 30 minutes to avoid hurting your breasts.
- If you have large breasts, hold and massage gently while pumping milk to help with the milk flow.

If all of the above steps have been followed and you're still having problems please contact us at [info@milkbarnnewzealand.com](mailto:info@milkbarnnewzealand.com)

#### DEVICE NOT POWERING ON

- Make sure the battery is fully charged and the underside switch is 'ON'.
- Check you are using the dedicated Milkbar adapter plug.
- Check your power outlet by plugging into another electrical socket to make sure that the power source is working.
- Make sure that your power adaptor is connected properly with the breast pump unit.
- If you're using a power adaptor and your breast pump is not turning on, try using the battery power and not the A/C adaptor. If it works on battery power, you may have a defective A/C adaptor.

#### MILK OVERFLOW PREVENTION

- The Milkbar Advanced Flow is a closed system breast pump design, with a barrier to stop milk entering the tubes. Below are some measures to avoid milk backflow.
- Adjust the pumping power to a lesser level if your breast milk is relatively abundant.
- Try releasing the pressure between your breasts and the silicone cushion, if you notice that the milk is gathering inside the flange and is not streaming into the collection bottle.
- Do not overfill the collection bottle.

#### IMPORTANT

- Charge the battery at least once a month. Charging time should not exceed 6 hours.
- Do not use any adaptor or battery that does not come with the pump.
- If E1 or E2 appears on the LCD display, it means there is an open or short circuit in the internal battery. Please contact [info@milkbarnnewzealand.com](mailto:info@milkbarnnewzealand.com).
- The lithium-ion battery is built-in. Do not remove.
- Always turn the battery power switch off when you're not using the pump.

#### DISPOSAL

- Medical equipment and other devices should be disposed of in proper containers that meet Environmental Protection Agency standards. Check with your local state laws and regulations in regards to proper disposal.

# Warranty INFORMATION



The Milkbar Advanced Flow is warranted to the original user only and is non-transferable. Milkbar warrants all breast pump models from the original date of product purchase, against all defects in material or workmanship:

- The pump motor for a period of one year, and;
- 90 days on all pump components, whether purchased from Milkbar directly or it's authorised agents for dealers.

Milkbar at its discretion and to the extent permitted by law, shall repair or replace any product that is determined defective provided it is covered within this limited warranty. Except to the extent prohibited by applicable law, all implied warranties (including warranties of merchantability and fitness for a particular purpose) shall be limited and duration to the duration of this limited warranty.

Proof of purchase, which can be in the form of a receipt, invoice or bill of sale to evidence limited warranty coverage must be provided. Milkbar shall not be liable for any incidental, consequential, special by way of misuse, neglect of maintenance, not following instructions in user manual, using improper accessories, or punitive damages resulting from any breach of limited warranty or implied warranty, or under any other legal Theory. Some Jurisdictions do not allow the exclusion or limitation of special, indirect or consequential damages, so the above limitation may not apply to you.

There are no other warranties that accompany this product. Any oral, written or any other representation of any kind is hereby disclaimed.

## TECHNICAL PARAMETERS

- **Model number:** DE-9724855LIB
- **MBPower input:** 100-240V~50/
- **60HzPower output:** DC 10V 1.5A
- **Power rating:** 15W
- **Stimulation Speed:** 100T/min
- **Stimulating Pressure:** Max ~0.018MPa, 9 levels vacuum
- **Expression Speed:** 26-60T/min
- **Expression Pressure:** Max ~0.036MPa, 9 levels vacuum
- **Li-ion Battery:** 7.4V 1750mAh
- **Timer:** 30 minutes
- **Overall Noise:** <=60dB(A)CE, REACH, ROHS approved
- **Electric Shock Protection:** AC adapter class II, Host machine class II

If you need any assistance,  
you can reach us at:



[info@milkbarnnewzealand.com](mailto:info@milkbarnnewzealand.com)

[@milkbarnnewzealand](#)



## **Milkbar Maternity and Breastfeeding New Zealand**

Raglan, New Zealand

**[milkbarnewzealand.com](http://milkbarnewzealand.com)**

**[@milkbarnewzealand](https://www.instagram.com/milkbarnewzealand)**

Find us on social media! Follow us, comment and tag us in your pictures. We love seeing them!

**[info@milkbarnewzealand.com](mailto:info@milkbarnewzealand.com)**

Questions, worries or concerns? Send us an email and we'll get back to you as soon as we can.