

70CM ADVENTURE CUBE INSTRUCTIONS

WARNING

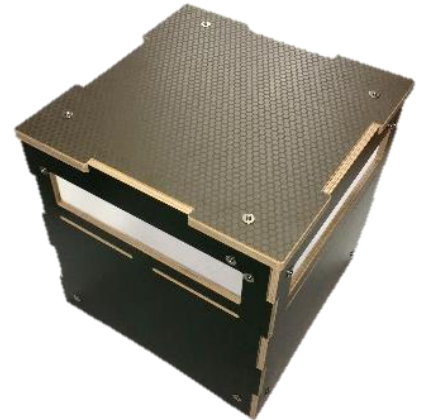
DO NOT USE POWER TOOLS TO ASSEMBLE THIS PRODUCT. USE OF POWER TOOLS WILL CAUSE CROSS THREADING OF THE BOLTS AND VOID ANY WARRANTY

NOTE: Bolts supplied in this kit are stainless steel. They are extremely weather proof however are easily cross threaded. To minimise the risk of cross threading ensure all holes are lined up by eye before placing the bolt in place and carefully threading in by hand. DO NOT OVER TIGHTEN OR YOU MAY RISK STRIPPING THE THREAD.

Enclosed within this box

4 x Adventure Cube Sides, 1 x Adventure Cube Top, 1 x Bolt Kit Bag, 16 x Brackets

Tools Required: Flat bench or work area, Screw Driver and Shifting Spanner.



Contained within this bolt kit

NOTE: This diagram is to scale

Angle Bracket

Dimensions: 38 x 38

Quantity: 16



Large Bolt

Dimensions: M4 x 25

Quantity: 8



Short Bolt

Dimensions: M4 x 20

Quantity: 24



Washer

Dimensions: M4 Flat Washer

Quantity: 32



Nylock Nut

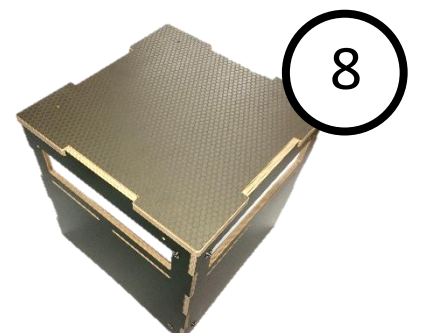
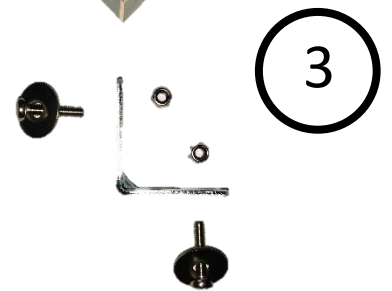
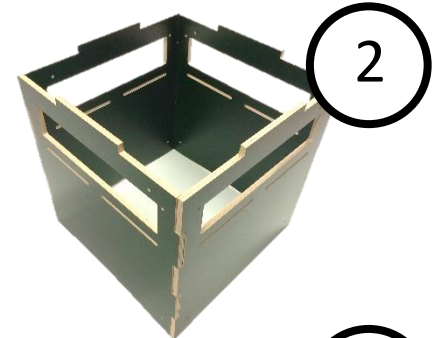
Dimensions: M4 Nylock Nut

Quantity: 32



Assembly

- 1) Position two Cube Sides adjacent to one another and slot them in to one another. Ensure they are roughly perpendicular.
- 2) Slot the third and fourth Sides into the previously assembled Sides.
- 3) Slide a Washer over a Short Bolt and slide it through the bottom left hole on any Side.
- 4) Slide a Washer over another Short Bolt.
- 5) From inside the Cube, slide a Bracket over the first Bolt and ensure the adjacent hole aligns with the hole on the adjacent Side. Slide the Bolt and Washer through these holes.
- 6) Thread on a Nylock Nut over both Bolts and, using a Screw Driver and Shifting Spanner, tighten the Nuts and Bolts 90% - just enough so the assembly will not fall apart.
- 7) Repeat steps 3-6 for all remaining holes except for the upper holes.
- 8) With the Cube sitting square, position the Top on top of the assembly. It should slot in snugly with the tabs on the Side pieces.
- 9) Carefully tip the assembly over onto its side.
- 10) Slide a Washer over a Long Bolt and slide it through any hole of the Top.



11) From inside the Cube assembly, slide a Bracket over the protruding Bolt and align the other hole of the Bracket with the hole of the nearest Side.

12) Slide a Washer over a Short Bolt and slide the Bolt through the Side hole and through the Bracket.

13) Thread on a Nylock Nut over both Bolts and, using a Screw Driver and Shifting Spanner, tighten the Nuts and Bolts 90% - just enough so the assembly will not fall apart.

14) Repeat steps 9-12 for all other holes on the Top.

15) Sit the Cube right-side-up again.

16) You may now completely tighten all bolts using a Screw Driver and Shifting Spanner.

