

4" SQUARE SURFACE MOUNTED COMMERCIAL POSTS



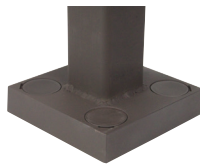
3" & 2-3/8" Tenons Available



Hand Hole With Cover Included



Post Cap Included



Flush Fit Bolt Covers Included

GUIDE CODE: 5620-BZ-HH-N3

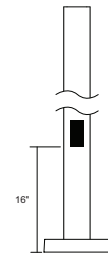
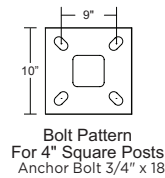


Surface Mounted

- Powdercoated Aluminum
- Welded Flange Base with Bolt Covers Included
- Anchor Bolts & Template Included
- Optional 3" or 2-3/8" Tenon
- Fits Most 3" Post Top Fixtures with 3" Tenon

4" SQUARE ALUMINUM  
.188" WALL THICKNESS

HAND HOLE LOCATION (Side View)



ITEM #	COLOR	OPTIONS
5688-8'	BK-Black (special order)	HH*
5690-10'	BZ-Bronze	N2-2-3/8" OD Tenon (post cap not included w/tenon)
5692-12'	WH-White (special order)	N3-2-7/8" OD Tenon (post cap not included w/tenon)
5694-14'		
5696-16'		
5698-18'		
5620-20'		

Call factory for custom lengths & colors. \*To meet U.L. and N.E.C. standards, any post designed to be mounted over 8' above ground includes a 2" x 4" (HH) Hand Hole and ground lug. 5690, 5692, 5694, 5696, 5698, and 5620 include Hand Hole unless otherwise specified. EPA ratings available on spec sheets and website. Specifications subject to change without notice. **See safety note on page 70.**