

Catalog Number

Project

Type

FEATURES & SPECIFICATIONS

APPLICATION — The Genesis Gen2 line of LED Landscape Bullets are the most versatile LED fixtures on the market today. Various beam spreads and wattages allow for a customized finish to any property. The high end residential grade system was designed for low voltage operation residential applications.

CONSTRUCTION — The die cast aluminum heat sink has 24 heat dissipating fins to maintain a cool operating LED for maximum life. The fins are independently supported to allow for unobstructed airflow. The fixture is designed to efficiently perform in any mounting orientation.

FINISH — A cathodic epoxy electrocoat primer or E-Coat is applied to all die cast aluminum components. E-coating provides the ultimate in corrosion and chemical resistance, providing superior salt spray, humidity and cyclic corrosion endurance. After the E-Coat is applied a super durable polyester powder coat finish is electrostatically applied in our state of the art paint facility. Standard colors available: Black, Bronze, OD Green, White. Custom colors available upon request.

OPTICAL SYSTEM — Techlight's proprietary OpticapSystem™ utilizes interchangeable optical lenses & reflectors to increase fixture lumen output efficiency. The system is provided with a high performance convex lenticular prismatic flood or a plano-convex spot optical lens. The flood & spot optical lenses are molded from low iron tempered glass. A 96% reflective UV stabilized injection molded reflector is included with each system. The OpticapSystem utilizes field interchangeable shields designed for optimum glare control in up or downlighting positions. The shields are field rotatable to allow adjustment of shielding. A variety of glass color filters are available to meet the designers specific color control needs.

ELECTRICAL SYSTEM — NOTE: A Techlight Surge Protector must be incorporated into the LED system at the beginning of each circuit as a minimum. Failure to do so will void the system warranty. Fixture operates at 9-16VAC or 9-24VDC input voltage. A 36 or 56 watt LED source provides approximately 1833 to 2860 (CW) Lumens of light.

GM2 SERIES

Genesis Gen2 Medium Low Voltage LED Landscape Bullet

Patent: D0648056



Fixture shown with
SGM2DN60 Down Shield

SERIES	HOUSING HEIGHT	LENGTH & WIDTH
GM2	4.1"	5.5" x 3.0"

MOUNTING — The die cast aluminum mount is secured to the heat sink by stainless steel screws and is sealed with an integral o-ring. A ½" threaded knuckle is provided standard.

LISTINGS — ETL listed for wet locations (IP67). Meets US and Canadian safety standards. -40°C to 40°C ambient operation.

WARRANTY — Techlight warrants the LED lighting Product(s) to be free from defects in material and workmanship for a period of three years for LED Light Engines and LED Power Components, from the date of shipment. Ground mounted products that are provided standard with our proprietary E-Coat pretreatment prior to the application of a powdercoat finish will carry a full 10 year finish warranty. Proper maintenance is required for full finish warranty.

ORDERING INFORMATION

Choose the bold face options for the appropriate luminaire configuration for your application and enter on the line above each fixture attribute. Accessories may be factory installed, depending on the particular accessory chosen, but still be ordered as a separate line item.

EXAMPLE:

GM2FL23CWLVDG

GM2					
SERIES	DISTRIBUTION	WATTAGE	COLOR TEMP	VOLTAGE	FINISH
	FL = Flood (60°) SP = Spot (20°)	23 = 23W	CW = Cool White NW = Neutral White WW = Warm White CRI >80	LV = 9-16VAC = 9-24VDC	BZ = Bronze BK = Black ODG = OD Green WH = White SP = Special ¹

ACCESSORIES (Order as separate line items)

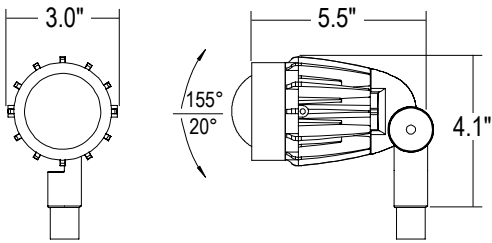
SGL2DN60	Downlight Shield
SGL2UP30	Uplight Shield
SGL2TUBE	Tube Shield
BSP3-277-LC²	10kV Surge Protector
B01GL	Tree Base with Ground Lug
B03	4" Round 3 Hole Cover
B16-12	Palm Tree Base with 12" Strap
TLSBBJB	Brass Junction Box
SMSB	12" x 1" Mounting Stake
MMSB	18" x 1" Mounting Stake
LMSB	20" x 2.5" Mounting Stake
LEDLFG120LENS	Green Glass Lens Filter (each)
TLHB800RCH	Digital Timer
PSJ163	16 Gauge 3 Strand Lead Wire

NOTES

- 1 = Custom RAL color matching is available. Contact your sales representative for additional info.
- 2 = A Techlight Surge Protector must be incorporated into the LED system at the beginning of each circuit as a minimum. Failure to do so will void the system warranty.

AVAILABLE FIXTURE DIMENSIONS

Dimensions shown are for fixture bodies only. Mounting options must be ordered separately.



MOUNTING ACCESSORIES

GEPTBZ
Low Profile Tree Base



B16-12
Palm Tree Base with 12' Strap



B03
4" Round 3 Hole Cover



B01GL
Tree Base with Ground Lug



TLSBBJB
Brass Junction Box

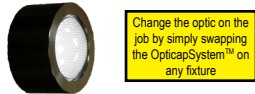


SMSB, MMSB, LMSB
12" x 1", 18" x 1" and 20" x 2.5" Mounting Stakes



ADDITIONAL FIXTURE ACCESSORIES

GM2CAPCVXFLDREFL
60° Flood OpticapSystem™
Field Installable Flood Optic



BSP3-277-LC¹
10kV Surge Protector



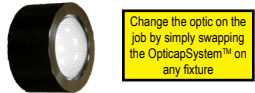
P20000PC-LVENC
Photocell (DC Transformer Operation Only)



PCCORD-6 6' Photocell Extension Cord
PCCORD-8 8' Photocell Extension Cord



GM2CAPSPOPTREFL
20° Spot OpticapSystem™
Field Installable Spot Optic



TLHB800RCH
Digital Timer



PW122LV 12-2 Low Voltage Wire
PW102LV 10-2 Low Voltage Wire



TLTN11²
Mechanical Timer



PSJ163
16 Gauge 3 Strand Lead Wire



LEDLFG120LENS
Green Glass Lens Filter (each)

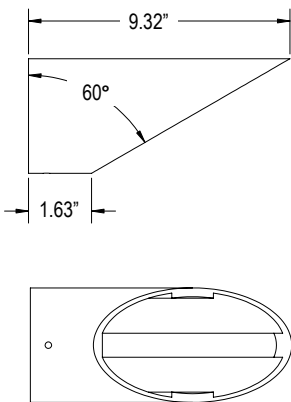


LEDLB120LENS
Blue Glass Lens Filter (each)

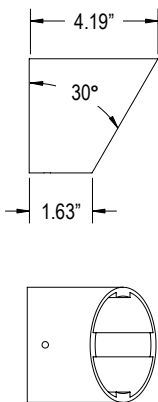


SHIELDS

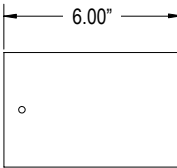
SGL2DN60
Downlight Shield



SGL2UP30
Uplight Shield



SGL2TUBE
Tube Shield



GM2 Genesis Gen2 Medium Low Voltage LED Landscape Bullet

TRANSFORMERS



ELV300 300W AC Low Voltage Enclosure
ELV600 600W AC Low Voltage Enclosure
ELV900 900W AC Low Voltage Enclosure
ELV1200 1200W AC Low Voltage Enclosure

ELV300 thru ELV1200 are 120VAC-11-15VAC magnetic stepdown xformers. They have 11, 12, 13, 14, 15VAC outputs. The 600W, 900W, & 1200W units have 2ea, 3ea, & 4ea 300W rated output circuits respectively. They are enclosed in a aluminum NEMA raintight enclosure polyester powder coated BK finish.



LVSS300 300W SS AC Low Voltage Enclosure
LVSS600 600W SS AC Low Voltage Enclosure
LVSS900 900W SS AC Low Voltage Enclosure
LVSS1200 1200W SS AC Low Voltage Enclosure

LVSS300 THRU LVSS1200 are 120VAC-11-15VAC magnetic stepdown xformers. They have 11, 12, 13, 14, 15VAC outputs. The 600W, 900W, & 1200W units have 2ea, 3ea, & 4ea 300W rated output circuits respectively. They are enclosed in a stainless steel NEMA raintight enclosure, with natural finish.



ELV300MV24DCSS
 300W DC Transformer in a Stainless Steel Enclosure

Output Voltage	Input Voltage Range	Output Current Range	Max. Output Power	Typical Efficiency (1)	Power Factor	
					110Vac	220Vac
24 Vdc	90 ~ 305 Vac	0 ~ 12.5 A	300 W	91%	.99	.96



ELV500MV24DCSS
 500W DC Transformer in a Stainless Steel Enclosure

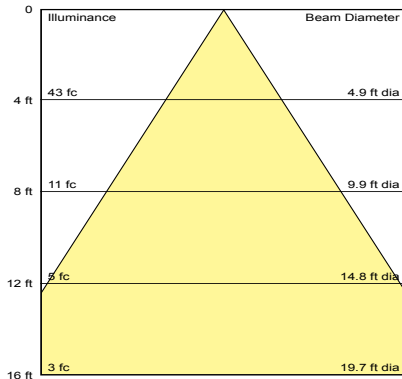
Output Voltage	Input Voltage Range	Output Current Range	Max. Output Power	Typical Efficiency (1)	Power Factor	
					110Vac	220Vac
24 Vdc	175 ~ 305 Vac	0 ~ 20.83 A	500 W	94%	.99	.96

The **ELV150MV24DCSS** thru **ELV500MV24DCSS** are 120-277VAC – 24VDC electronic power supplies. They are equipped with surge protection, and are enclosed in a stainless steel NEMA raintight enclosure with natural finish. The data listed for these power supplies is correct. Just need to add the 150W version.

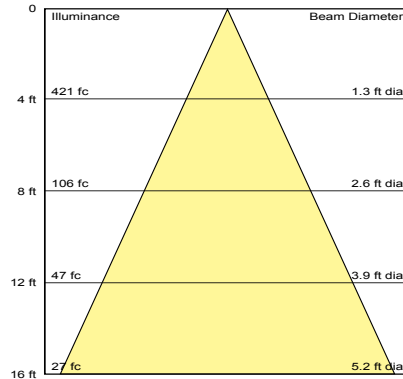
PERFORMANCE

ILLUMINANCE CONE DIAGRAMS

GM2FL23CWL 23W GM2 LED Bullet
Flood Optic Color Temperature: 5,900 K



GM2SP23CWL 23W GM2 LED Bullet
Spot Optic Color Temperature: 5,900 K



*Lumen output less any shielding

Fixture	Color Temp	23W Lumen Output	
		FL	SP
GM2	CW (5900K)	916	1023
	NW (4000K)	844	942
	WW (3000K)	809	903

WARNING: Maintenance performed including the replacement of LED bricks while power is still supplied to the luminaire may result in system failures and will void the warranty.



TECHLIGHT
 INNOVATION IN ILLUMINATION

2707 SATSUMA | DR. DALLAS, TX 75229 | PH: 800.225.0727 | techlight@techlight |

www.techlight.com

All dimensions and specifications are subject to change without notice.

REV: 20220421-02