

GENERATION SERIES  
DECORATIVE POST TOP LUMINAIRE



# Performance and Aesthetic Value

## Versatile, Adaptable Form

From traditional to contemporary applications, the Generation Series LED post top luminaire provides the flexibility of form needed to complement a wide range of surroundings. A wide selection of base, cage, top, lens and finial styles allows for hundreds of design combinations.

## Efficient LED Technology

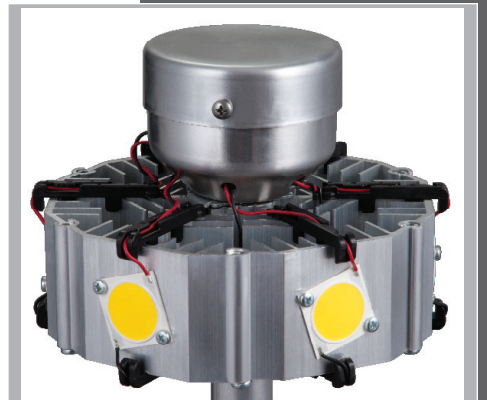
LEDs open the door for meaningful reductions in energy consumption, improving the bottom line while providing real environmental benefits. The Generation Series LED luminaire provides warm, white light with dimming technology that allows for precise management of energy usage and illumination, while its long maintenance intervals deliver real operating cost savings and return on investment.

## Designed for the Long Run

The Generation Series LED luminaire boasts leading edge technology and world-class reliability along with user-friendly features like tool-less entry and quick electrical disconnects. Backed by rigorous engineering and manufacturing standards, the Generation Series LED luminaire integrates the latest technology in a familiar form with no compromises.



The Generation Series LED luminaire is a marriage of traditional shapes, contemporary styling and superior photometrics that offer excellent illumination and uniformity for many of today's applications.



gn with the latest in LED

# Design Performance Features

## Construction

- Heavy-duty die-cast aluminum housing, removable door and cage assemblies
- Multiple spun aluminum or acrylic tops, cast aluminum finials and extruded aluminum cage rings
- Single quarter turn fastener for tool-less access to wiring compartment
- Optional twistlock globe assembly for ease of maintenance
- Optional internal NEMA photocontrol receptacle available

## Electrical

- Operates in -40°C to 40°C ambient temperatures
- 10kV/10kA UL 1449 surge protection standard
- 120-277V 50/60Hz operation
- Standard three-position tunnel type compression terminal block

## Optical

- Available in Type III and Type V distributions

## Mounting

- Fits 3" O.D. tenons, secured by four 3/8" stainless steel fasteners

## Finish

- Five-stage super TGIC paint resists extreme weather conditions while providing optimal color and gloss retention. It's available in standard black, bronze, grey, white, dark platinum, graphite metallic or hartford green. RAL and custom colors matches available



Grey



Bronze



Black



Dark Platinum



Graphite Metallic



White



Hartford Green

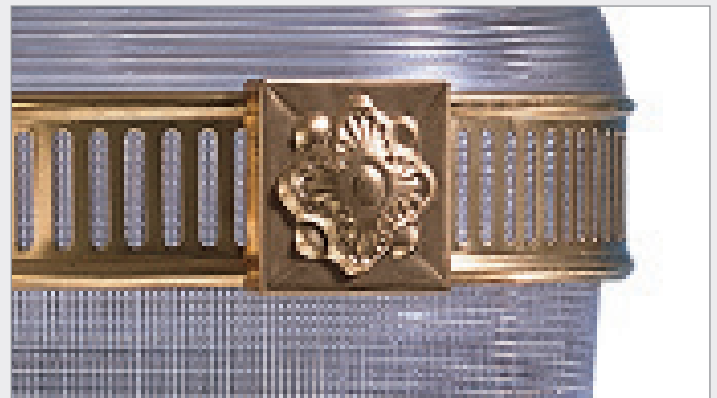
## Warranty

- Five-year warranty



### Tool-less Access

Access to wiring compartment via a single quarter-turn fastener.



### Decorative Brass Banding

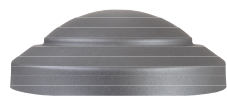
To further enhance the aesthetics of the Acorn and Victorian glow top versions, a decorative brass band is available.

# Flexibility and Versatility

## Appealing Form

The Generation Series LED luminaire is designed to offer a multitude of both traditional and contemporary forms to meet varying market needs. Combining three distinct bases, four unique cage assemblies and a variety of tops and finials, over 100 different styles can be created to complement virtually any application.

### Top Type



Modern  
(Spun Top)



Nostalgic  
(Spun Top / Top Access)



Victorian  
(Glow Top)

### Finial Type



Architectural

Modern

Victorian

Nostalgic



Classical  
(Spun Top)



Architectural  
(Spun Top / Top Access)



Acorn  
(Glow Top)



Avenue <sup>1</sup>  
(Spun Top / Top Access)

### Cage Type



Classical



Modern



Architectural



Avenue <sup>1</sup>

### Base Type



Acorn



Architectural



Classical

### Globe Type



Refractive Globe (Type III or V)  
Acrylic or Polycarbonate

NOTES: <sup>1</sup> Avenue cage must be ordered with Avenue Top and Architectural base. Avenue top is available without cage.

# Energy Savings

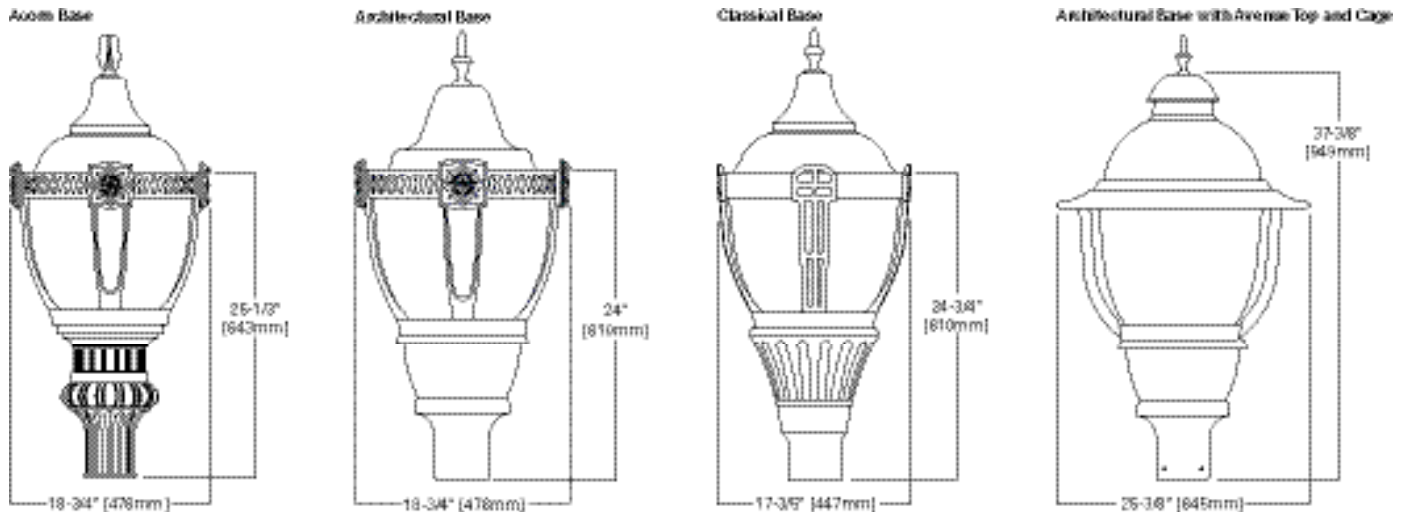
## Operating Cost Savings

The Generation Series LED delivers operating cost savings from day one. When you replace an HID luminaire with the Generation Series LED, you eliminate expensive lamp replacement trips and cut your energy usage by over 50%, saving hundreds of dollars in the first few years of operation.

Annualized Energy and Maintenance Cost Comparisons (Type V, no cage, glow top, 4380 op hours/yr)

\$0.20/kW-h	CCT	System Lumens	System Watts	Life (hours)	Lamp cost	Operating Cost to Replace Lamp	% of lamps replaced, 5 years	Maintenance Cost, 5 years	Energy Cost, 5 years	Total Operating Cost, 5 years
Generation Series LED	3000K	14,500	84	50,000	--	--	--	\$0.00	\$367.92	\$367.92
150W HPS	2100K	15,187	180	24,000	\$9.00	\$100.00	50%	\$54.50	\$788.40	\$842.90
150W PSMH	3000K-4000K	12,875	175	15,000	\$15.00	\$100.00	75%	\$86.25	\$766.50	\$852.75
\$0.15/kW-h	CCT	Lumens (Type V, no cage, no finial)	System Watts	Life (hours)	Lamp cost	Operating Cost to Replace Lamp	% of lamps replaced, 5 years	Maintenance Cost, 5 years	5-year Energy Cost	Total Operating Cost, 5 years
Generation Series LED	3000K	14,500	84	50,000	--	--	--	\$0.00	\$275.94	\$275.94
150W HPS	2100K	15,187	180	24,000	\$9.00	\$100.00	50%	\$54.50	\$591.30	\$645.80
150W PSMH	3000K-4000K	12,875	175	15,000	\$15.00	\$100.00	75%	\$86.25	\$574.88	\$661.13
\$0.10/kW-h	CCT	Lumens (Type V, no cage, no finial)	System Watts	Life (hours)	Lamp cost	Operating Cost to Replace Lamp	% of lamps replaced, 5 years	Maintenance Cost, 5 years	5-year Energy Cost	Total Operating Cost, 5 years
Generation Series LED	3000K	14,500	84	50,000	--	--	--	\$0.00	\$183.96	\$183.96
150W HPS	2100K	15,187	180	24,000	\$9.00	\$100.00	50%	\$54.50	\$394.20	\$448.70
150W PSMH	3000K-4000K	12,875	175	15,000	\$15.00	\$100.00	75%	\$86.25	\$383.25	\$469.50

## Dimensions





**Lighting Brands**

Ametrix  
AtLite  
Corelite  
Ephesus  
Fail-Safe  
Halo  
Halo Commercial  
Invue  
io  
Iris  
Lumark  
Lumière  
McGraw-Edison  
Metalux  
MWS  
Neo-Ray  
Portfolio  
RSA  
Shaper  
Streetworks  
Sure-Lites

**Controls Brands**

Greengate  
Fifth Light

**Connected Lighting Systems**

HALO Home  
WaveLinx

**IoT Platforms**

Trellix



**Cooper Lighting Solutions**  
1121 Highway 74 South  
Peachtree City, GA 30269  
P: 770-486-4800  
[www.cooperlighting.com](http://www.cooperlighting.com)

Canada Sales  
5925 McLaughlin Road  
Mississauga, Ontario L5R 1B8  
P: 905-501-3000  
F: 905-501-3172

© 2022 Cooper Lighting Solutions  
All Rights Reserved  
Publication No. BR506112EN  
September 2022

Cooper Lighting Solutions is a registered trademark.

All other trademarks are property of their respective owners.

Product availability, specifications, and compliances are subject to change without notice.