

XNV2
LED Roadway and Area Luminaire



Cooper Lighting
by **EAT•N**

The Next Chapter in LED Roadway Lighting

The XNV2 LED luminaire replaces HPS roadway lighting with a simple, economical package. Designed to replace 150W HPS, the XNV2 luminaire is the perfect answer for local roadway and utility lighting needs.



Construction

- IP66 light squares
- 3G vibration rated
- Rugged, die-cast aluminum construction
- Wet location rated housing (IP66 housing available)
- Tool-less entry with hinged removable door for ease of maintenance

Electrical

- Operates in -40°C to 40°C ambient temperatures
- UL1449 Listed, 10kV/10kA common (line-to-ground) and differential (line-to-line) surge protector
- L90, 60,000 hours at 40°C, compliant with IESNA TM-21
- 120-277V 50/60Hz, 347V/60Hz, or 480V/60Hz operation

Finish

- Five-stage super durable TGIC paint resists extreme weather conditions while providing optimal color and gloss retention
- Available unpainted, or in grey, bronze, black, dark platinum, graphite metallic and white painted finishes

Warranty

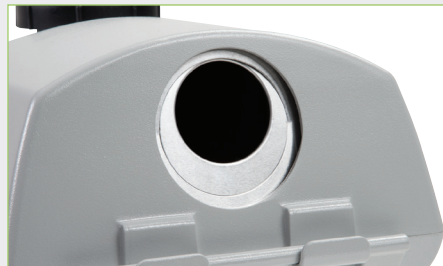
- Five-year warranty

Innovation you can rely on™



Tool-less Entry

Stainless steel latches provide easy, tool-less access to electrical compartment, even while wearing lineman's gloves.



Bird Guard

Standard bird guard fits securely around 1-1/4" and 2" standard pipe (1-5/8" to 2-3/8" O.D.).



Two-Bolt Mounting

Additional mounting bracket is available for four-bolt mounting.



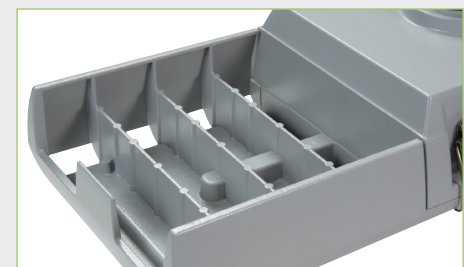
NEMA Photocontrol Receptacle

Gasketed receptacle for mounting standard NEMA photocontrol. (Order separately)



Surge Protection

Standard UL 1449 Listed 10kV/10kA surge protection device protects against common (line-to-ground) and differential (line-to-line) mode surges.



Rugged and Efficient Construction

Die-cast aluminum housing and door. Heat sink is cast into door, allowing passive cooling and natural cleaning.

Ordering Information

Lumen Maintenance

Ambient Temperature	TM-21 Lumen Maintenance (60,000 Hours)	Theoretical L70 (Hours)
40°C	> 90%	> 250,000

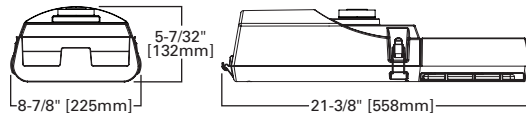
Lumen Multiplier

Ambient Temperature	Lumen Multiplier
10°C	1.04
15°C	1.03
25°C	1.00
40°C	0.96

Power and Lumens

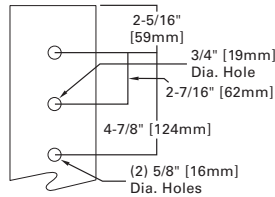
Number of LED Squares	2	2	2	
LED Drive Current	1A	700mA	525mA	
Luminaire Wattage (Nominal)	110W	76W	56W	
Input Current @ 120V (A)	0.92	0.63	0.47	
Input Current @ 277V (A)	0.40	0.27	0.20	
Optics				
Type II	Lumens	9,817	7,588	5,902
	BUG Rating	1-0-2	1-0-2	1-0-1
Type III	Lumens	10,064	7,779	6,050
	BUG Rating	1-0-2	1-0-2	1-0-2
Type V	Lumens	10,117	7,820	6,082
	BUG Rating	4-0-2	3-0-2	3-0-1

Dimensions



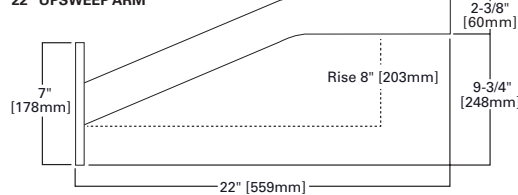
Arm Drilling

TYPE "M"



Optional Mounting Arm

22" UPSWEEP ARM



Sample Number: XNV2-AC-02-E-U-2-10K-4-AP

Product Family ¹	Light Engine	Number of Light Squares	Driver	Voltage	Distribution	Surge Protection
XNV2	AC=Version AC	02=2	E=Non-Dimming D=Dimming	U=Universal 120-277V 8=480V 9=347V	2=Type II 3=Type III 5=Type V	10K=Cooper 10kV Surge Module (Standard) X=Driver Surge Protection Only ²
Options (Add as Suffix)				Color	Accessories (Order Separately)	
7030=70 CRI 3000K ³ 7060=70 CRI 6000K ³ 525=Drive Current Factory Set to 525mA ⁴ 700=Drive Current Factory Set to 700mA ⁴ FADC=Field Adjustable Drive Current ⁵ 4=NEMA Twistlock Photocontrol Receptacle K=Level Indicator U=UL Listed/CSA Certified IP66=IP66 Rated MS/X-L08=ON/OFF Motion Sensor, Maximum 8' Mounting Height ⁶				AP=Grey (Standard) BZ=Bronze BK=Black DP=Dark Platinum GM=Graphite Metallic WH=White A=Raw Aluminum Unfinished	OA/RA1016=NEMA Photocontrol - Multi-Tap OA/RA1027=NEMA Photocontrol - 480V OA/RA1201=NEMA Photocontrol - 347V OA/RA1013=Photocontrol Shorting Cap OA/RA1014=NEMA Photocontrol - 120V OA1223=10kV Surge Module Replacement FSIR-100=Wireless Configuration Tool for Motion Sensor ⁹ LS/HSS-XX=Light Square House Side Shield ¹⁰	
MS/X-L20=ON/OFF Motion Sensor, 9'-20' Mounting Height ⁶ MS/X-L40=ON/OFF Motion Sensor, 21'-40' Mounting Height ⁶ MS/DIM-L08=Motion Sensor for Dimming Operation, Maximum 8' Mounting Height ⁷ MS/DIM-L20=Motion Sensor for Dimming Operation, 9' to 20' Mounting Height ⁷ MS/DIM-L40=Motion Sensor for Dimming Operation, 21' to 40' Mounting Height ⁷ AI=Site Arm Included ⁸						

NOTES: 1 Standard 4000K CCT and 70 CRI. 2 Consult factory for driver surge protection values. 3 Consult factory for lead times and lumen multiplier. 4 Only available with dimming driver. 5 Three settings; 525mA, 700mA and 1000mA. Only available with dimming driver. 6 Sensor mounted externally. 7 Sensor mounted externally. Must specify dimming driver. Consult factory for more information. 8 22" upsweep arm. Round pole adapter included. See optional mounting arm drawing. 9 Hand-held tool that enables adjustment of parameters, including high and low modes, sensitivity, time delay, cutoff, and more. Consult your Eaton's Cooper Lighting business representative for more information. Only available with dimming driver. 10 Replace XX with color.

Additional Information

Compliances	Technical Data (Electronic Driver)	EPA (Effective Projected Area - Square Feet)	Shipping Data (Approximate Net Weight)
UL and cUL Wet Location Listed IP66 Light Square 3G Vibration Rated ARRA Compliant UL 1449 Surge Protection UL Class 2 Electrical Device ISO 9001 DesignLights Consortium® Qualified*	0.9 Power Factor <20% Total Harmonic Distortion 120-277V, 50/60 Hz 347V/60 Hz, 480V/60 Hz -40°C Minimum Ambient Temperature Rating +40°C Maximum Ambient Temperature Rating	1.0	22 lbs. (10.0 kgs.)

* Consult DesignLights.org for list of qualified configurations.



IP66
Rated

NOTE: Specification and dimensions subject to change without notice.

Eaton's Cooper Lighting Business

Headquarters
1121 Highway 74 South
Peachtree City, GA 30269
P: 770-486-4800
www.cooperlighting.com

Canada Sales

5925 McLaughlin Road
Mississauga, Ontario L5R 1B8
P: 905-501-3000
F: 905-501-3172

Our Lighting Product Brands

Halo
Halo Commercial
Portfolio
IRiS
RSA
Metalux
Corelite
Neo-Ray
Fail-Safe
MWS
Ametrix
Shaper
io
Lumark
McGraw-Edison
Invue
Lumière
Streetworks
AtLite
Sure-Lites

Our Controls Product Brands

Greengate
iLumin
Zero 88
Fifth Light Technology
iLight (International Only)