

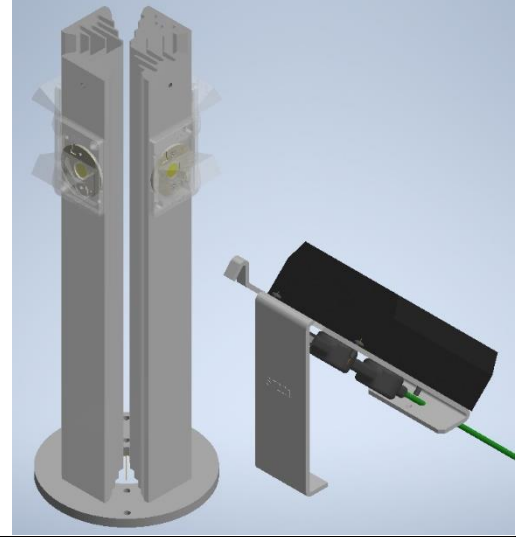
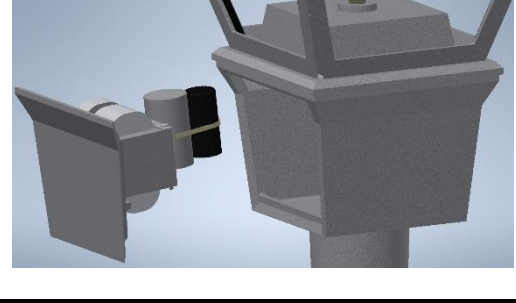

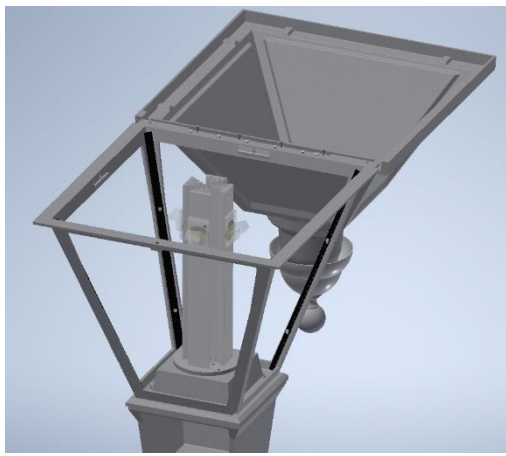


Fixture Installation Instructions	Product: VCOB-1843
Effective Date: September 20, 2021	Part Description: VCOB Retrofit Kit

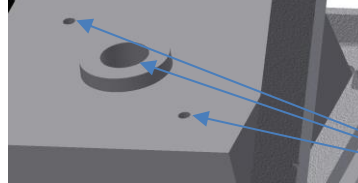
	WARNING: To avoid fire, shock or death, turn off and lockout power before performing any maintenance.
	CAUTION: This Fixture must be wired in accordance with the National Electric Code (NEC) and all applicable local codes. Proper grounding is required. All work should be done by a qualified electrician.

A. Remove Roof of Fixture

	<p>Step 1: Unpack VCOB conversion kit. Handle with care, being careful not to touch the optics. Recycle the empty packaging.</p>
	<p>Step 2: Remove the fitter door and set it aside for later use. Disconnect supply lines from ballast. Remove ballast components and dispose of them properly.</p>
	<p>Step 3: Unlatch roof assembly and rotate to open position. Remove any optics in roof, and any lamps, sockets, or decorative chimneys on the fitter cap. These components will not be used for the retrofit.</p>



Step 4: Using a 7/8" (.875") hole saw or drill, enlarge the center hole in the center boss above the ballast compartment. (See below.) Place the VCOB unit on the center boss above the ballast compartment and rotate the VCOB to its proper street side orientation. Mark the locations of the two outermost holes on the roof of the ballast compartment. Drill two #19 (.170") holes at the marked locations for thread forming screws. Route the VCOB wiring and connectors through the enlarged center hole in the fitter cap, attach the VCOB with (2) 10-24 thread forming screws supplied.



Drill center hole and VCOB mtg holes

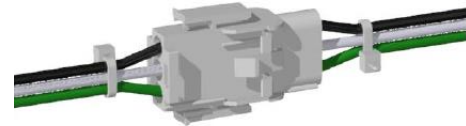
A drill extension may be required for this operation.



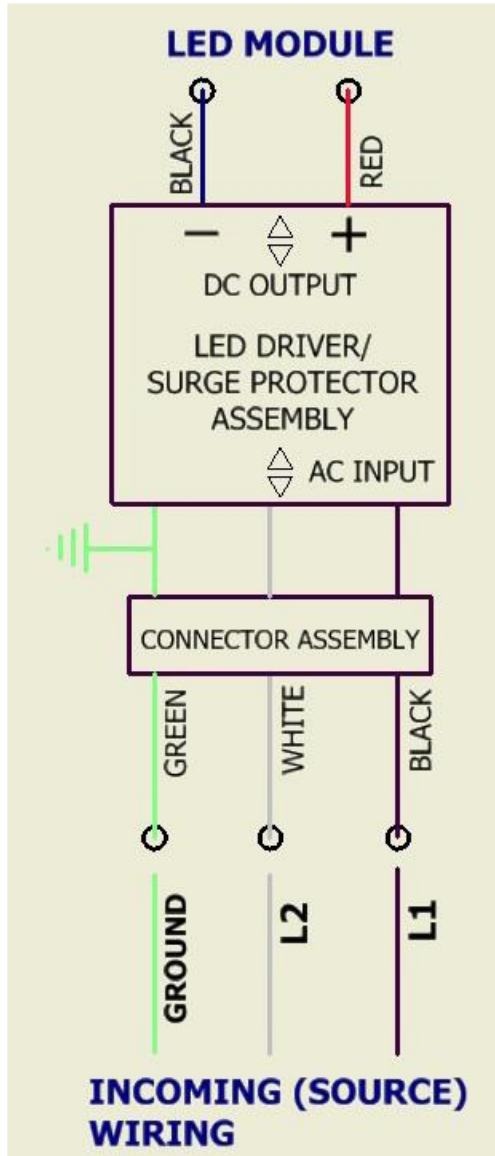
Step 5A: Reopen the ballast compartment and remove drill shavings from this area. Disconnect the male-female quick disconnect (see below) and wire free ends per the wiring schematic. Install the driver bracket by leaning the driver bracket forward toward the fitter opening to allow the locking tab to enter the right side of the fitter where the roof is lower. Slide the bracket to the left and twist to engage the driver against the front left wall and tighten the thumb screw to restrict movement of the assembly.

Step 5B: **Step 5B:** Locate the free RED and BLACK wires routed from the VCOB (LED Module) and the corresponding 2-position connectors on the driver bracket and wire them per schematic.

Step 5C: Reconnect the male and female quick disconnect and close ballast compartment being careful not to pinch any wires.



To supply lines



Revision History				
Rev	Description of Revision	ECN Number	Design Engineer Author	Engineering Approval
A	Initial Release	ECN 09-20-2021 RAY	RAY	MR