

1914 INSTALLATION INSTRUCTIONS.

1. REGULAR HANGSTRAIGHT INSTALLATION AND LEVELING-FIG.1

- INSTALL THE FIXTURE HANG STRAIGHT ONTO THE ARM
- REMOVE "A" HEX BOLT AND MARK LOCATION OF THE HOLE.
- DRILL 1/2" DIA HOLE THRU THE ARM.
- INSTALL HEX BOLT 1/2" BOLT AND USE SUPPLIED THREAD LOC FLUID.
- SECURE SET SCREWS "B" AND USE THREAD LOC FLUID.
- SUPPLY WIRES MAY BE CONNECTED THRU THE TOP OR THRU THE ACCESS DOOR IF PHOTOCELL OPTION IS REQUIRED.
- SEE WIRING SCHEMATIC.
- LEVEL THE FIXTURE AND SECURE THREE SET SCREWS "C".

2. "CHICAGO" STYLE HANGSTRAIGHT INSTALLATION-FIG. 2.

- INSTALL THE FIXTURE INTO THE ARM.
- PLACE LEVEL ON THE TOP OF THE FIXTURE.
- LEVEL FIXTURE BY TIGHTING CLAMPES 1 AND 2.
- RECOMMENDED TORQUE FOR CHICAGO HANGSTRAIGHT BOLTS IS 22 lb-ft.

LAMP REPLACEMENT FOR NON-LED FIXTURES

1. TO INSTALL OR REPLACE THE LAMP (NON-SEALED OPTIC)
 - OPEN UP THE BOTTOM DOOR BY DISENGAGING THE DOOR LATCH.
 - PLACE THE LAMP INTO THE SOCKET.
 - CLOSE THE BOTTOM DOOR AND ENGAGE THE DOOR LATCH.

OPTIONAL TO INSTALL OR REPLACE THE LAMP (SEALED OPTIC) FIG. 3 AND FIG. 4

- OPEN THE BOTTOM DOOR BY DISENGAGING THE DOOR LATCH.
- ROTATE THE SOCKET HOLDER COUNTER CLOCKWISE TO OPEN.
- PLACE THE LAMP INTO THE SOCKET.
- ROTATE THE SOCKET HOLDER CLOCKWISE UNTIL IT STOPS.
- CLOSE THE BOTTOM DOOR AND ENGAGE THE LATCH.

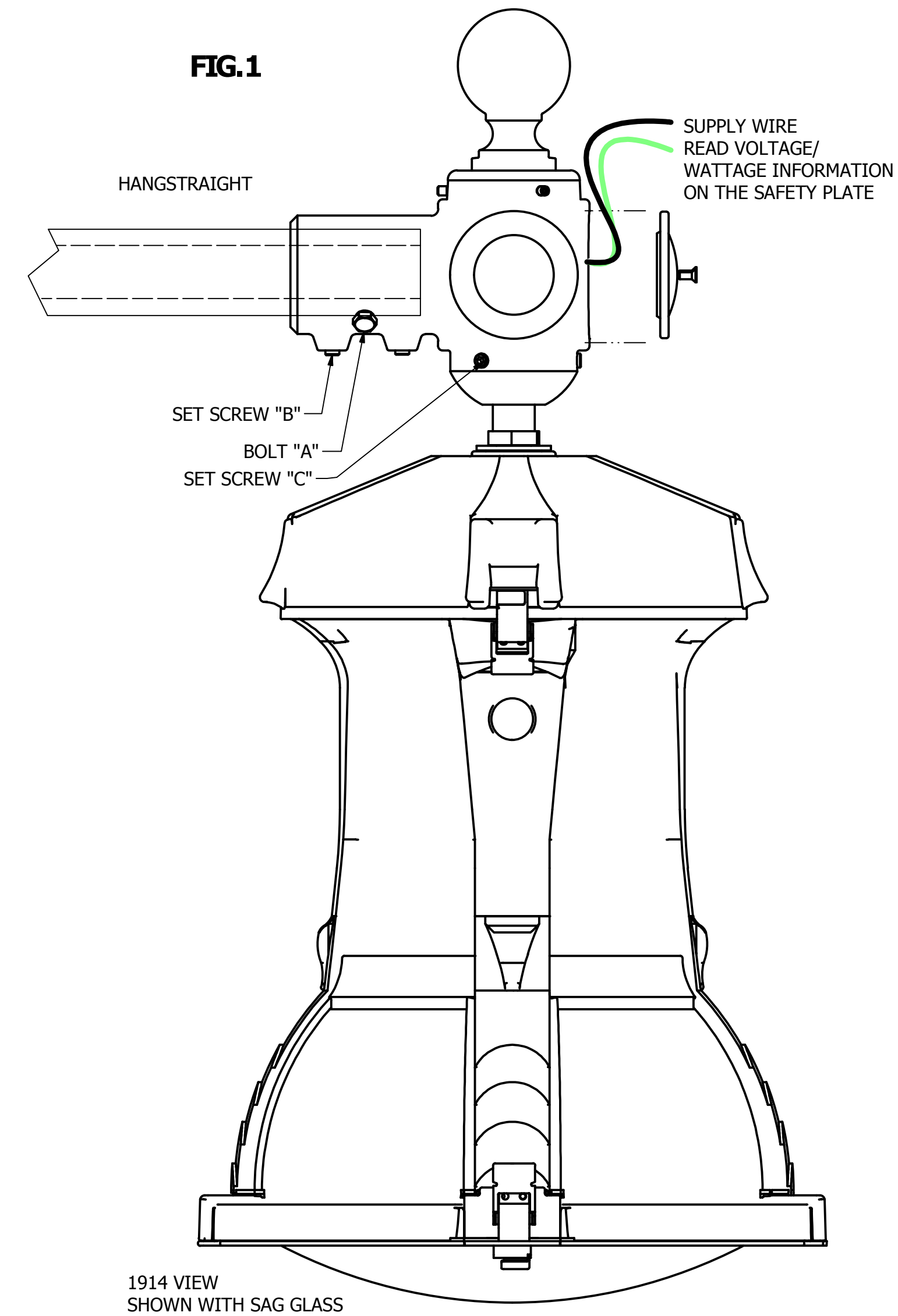
OPTIONAL 1914 WITH TEAR DROP GLASS REFRACTOR-FIG. 3 REFRACTOR IS ASSEMBLED TO THE BOTTOM DOOR AND SHIPPED SEPARATELY.

TO INSTALL GLASS/BOTTOM DOOR TO THE FIXTURE

- REMOVE UIC RELEASE PIN FROM THE BOTTON HINGE PIN.
- SLIDE GLASS/BOTTOM DOOR ASSEMBLY ON PIN.
- SNAP UIC RELEASE PIN BACK INTO THE DOOR HINGE PIN.
- CLOSE DOOR AND ENGAGE THE LATCH.

LED FIXTURES

- TO ACCESS DRIVERS UNLATCH AND OPEN THE TOP.
- LOOSEN UP TWO CAPTIVE SCREWS ON THE TOP PLATE.
- REMOVE THE PLATE TO ACCESS THE DRIVERS.



1914 VIEW SHOWN WITH SAG GLASS

STREET SIDE LOCATION FOR HID AND LED FIXTURES

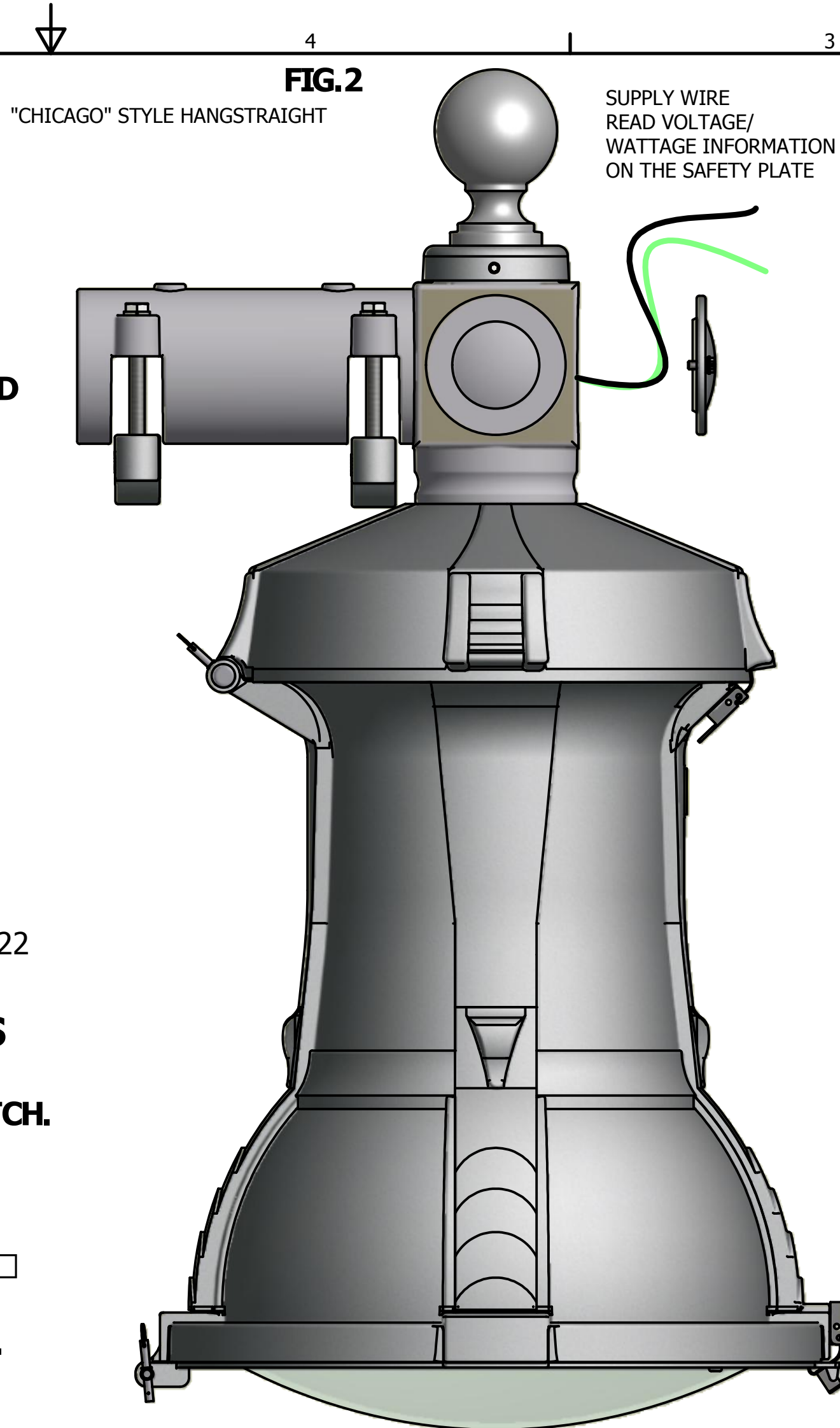
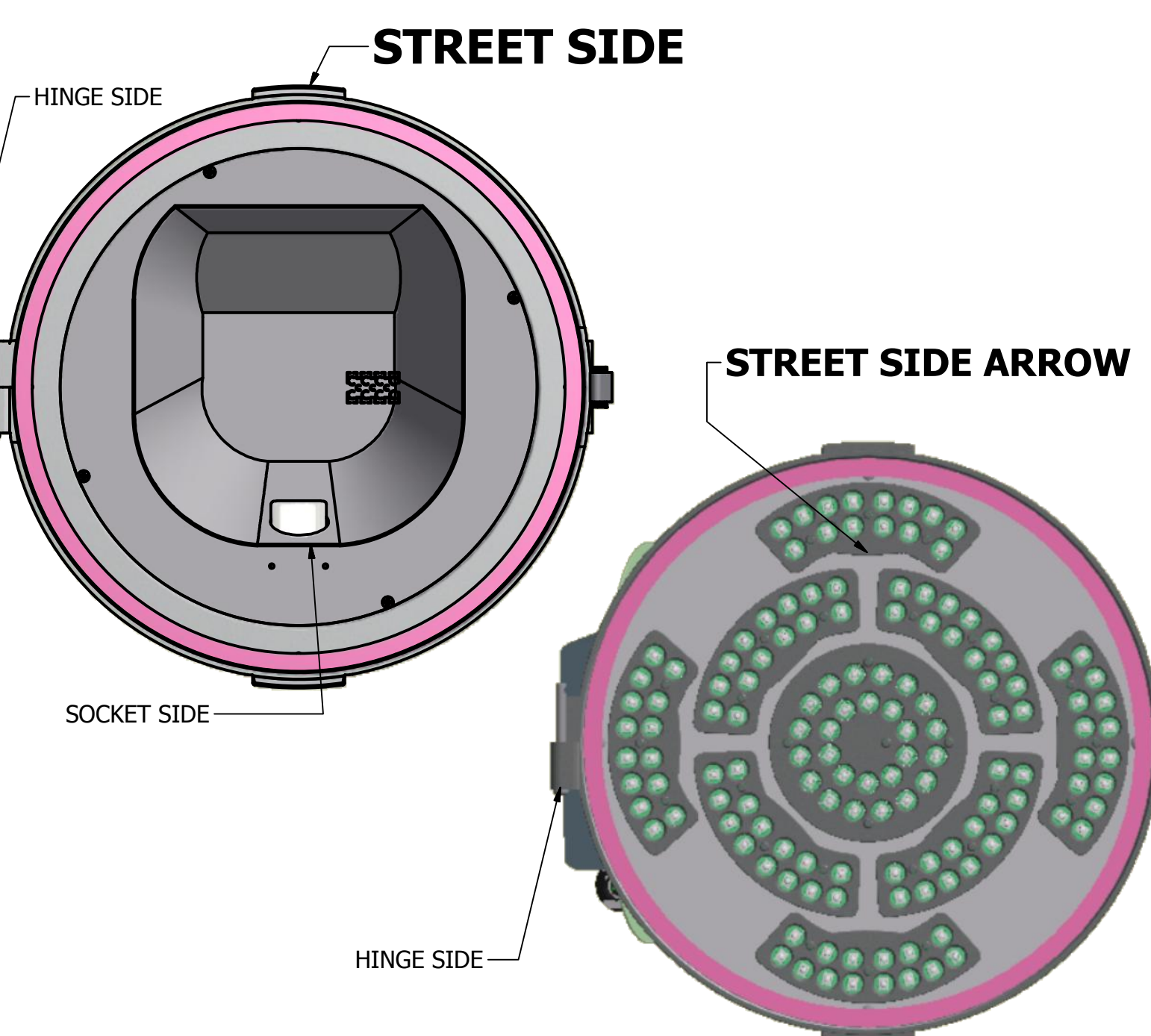
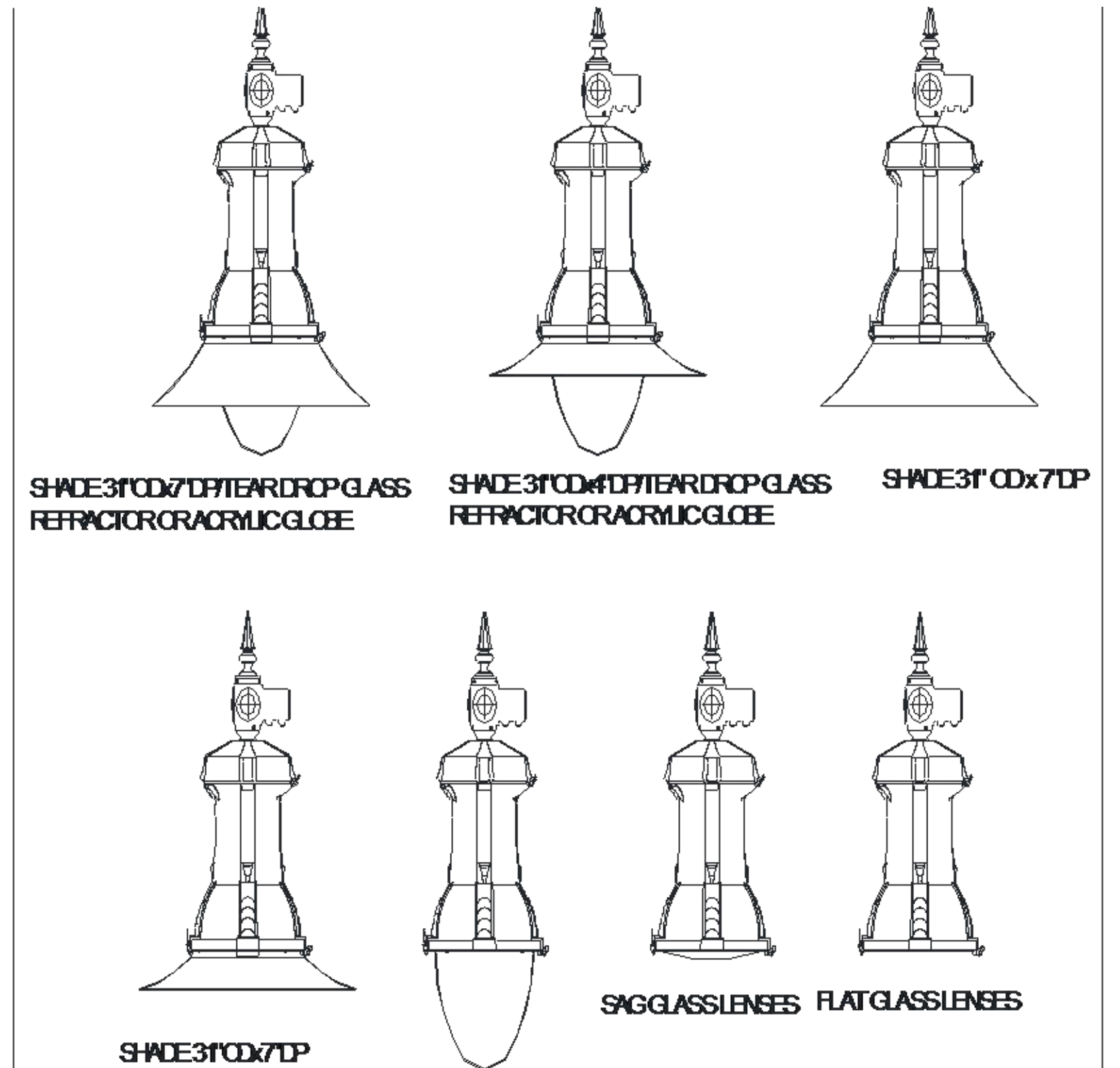


FIG. 2

"CHICAGO" STYLE HANGSTRAIGHT

SUPPLY WIRE READ VOLTAGE/WATTAGE INFORMATION ON THE SAFETY PLATE



SHADE 3' OD x 7' DP TEAR DROP GLASS REFRACTOR OR ACRYLIC GLOBE

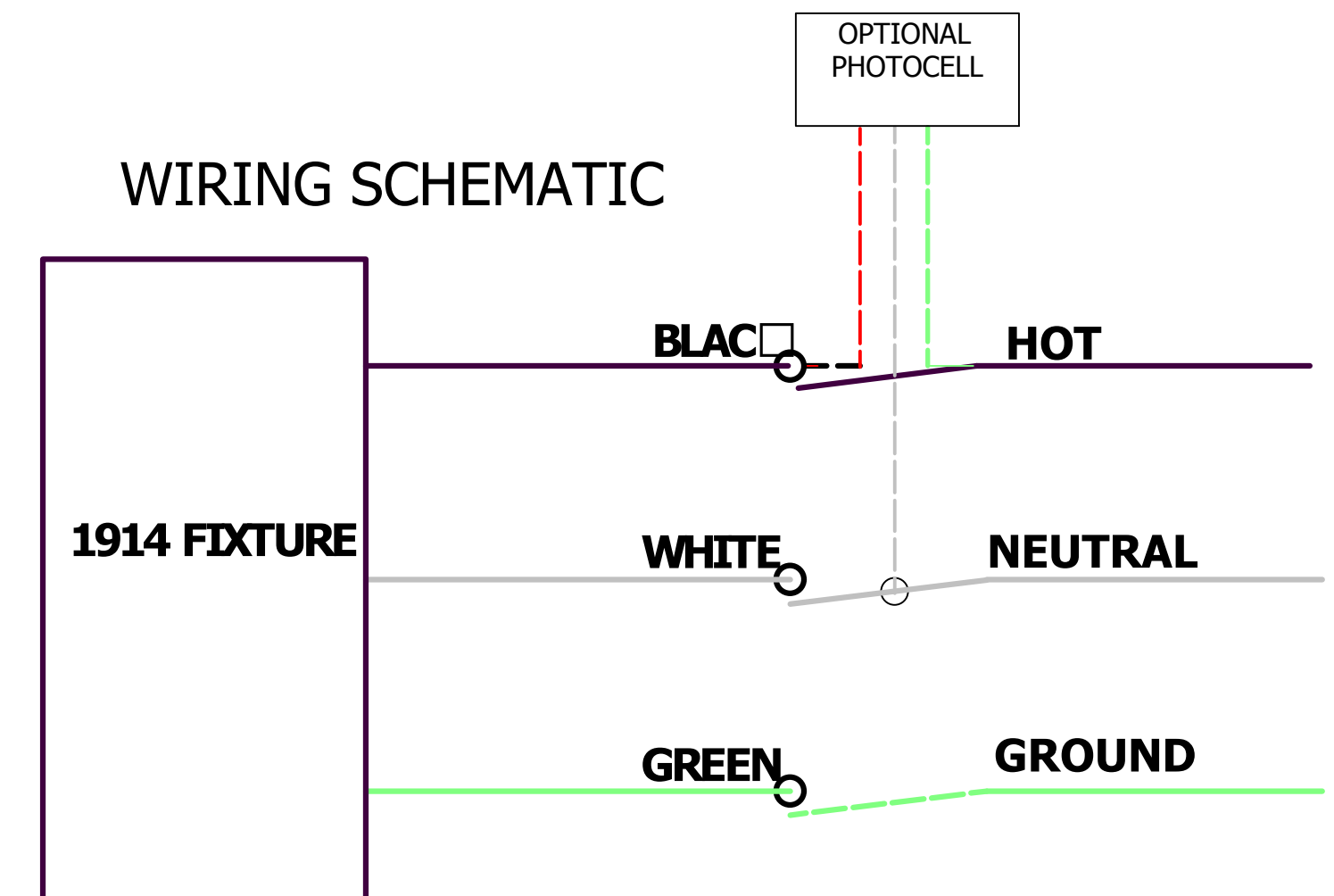
SHADE 3' OD x 7' DP TEAR DROP GLASS REFRACTOR OR ACRYLIC GLOBE

SHADE 3' OD x 7' DP

SHADE 3' OD x 7' DP

SAG GLASS LENSES FLAT GLASS LENSES

WIRING SCHEMATIC



WARNING: TO AVOID FIRE, SHOCK OR DEATH, TURN OFF POWER BEFORE WIRING.

CAUTION: THIS FIXTURE MUST BE WIRED IN ACCORDANCE WITH THE NATIONAL ELECTRIC CODE AND ANY APPLICABLE LOCAL CODES. PROPER GROUNDING IS REQUIRED. ALL WORK SHOULD BE DONE BY QUALIFIED ELECTRICIAN.

OPTIONAL FIG. 3 SEALED OPTIC/BOTTOM DOOR ASSEMBLY-HID LAMP ONLY

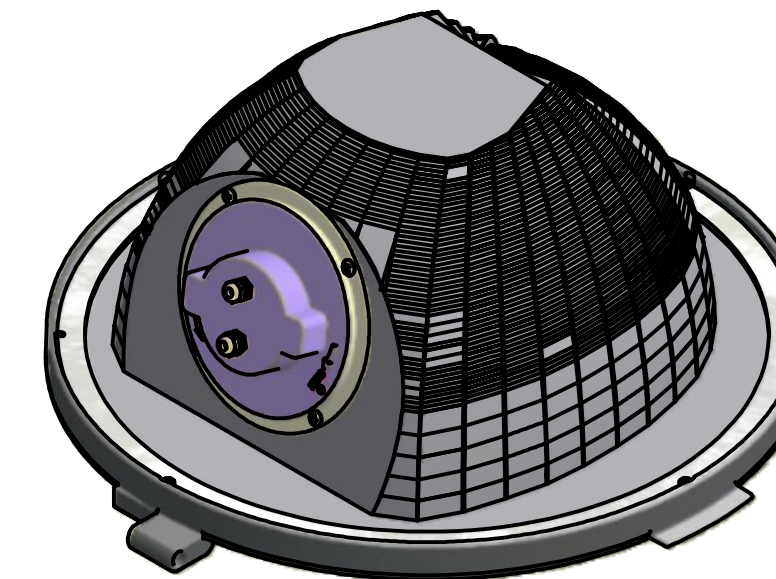


FIG. 4 SOCKET HOLDER ASSEMBLY SEALED ROOF OPTIC

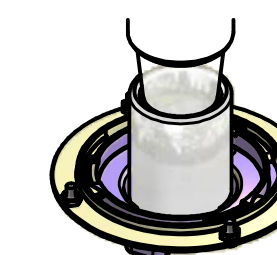
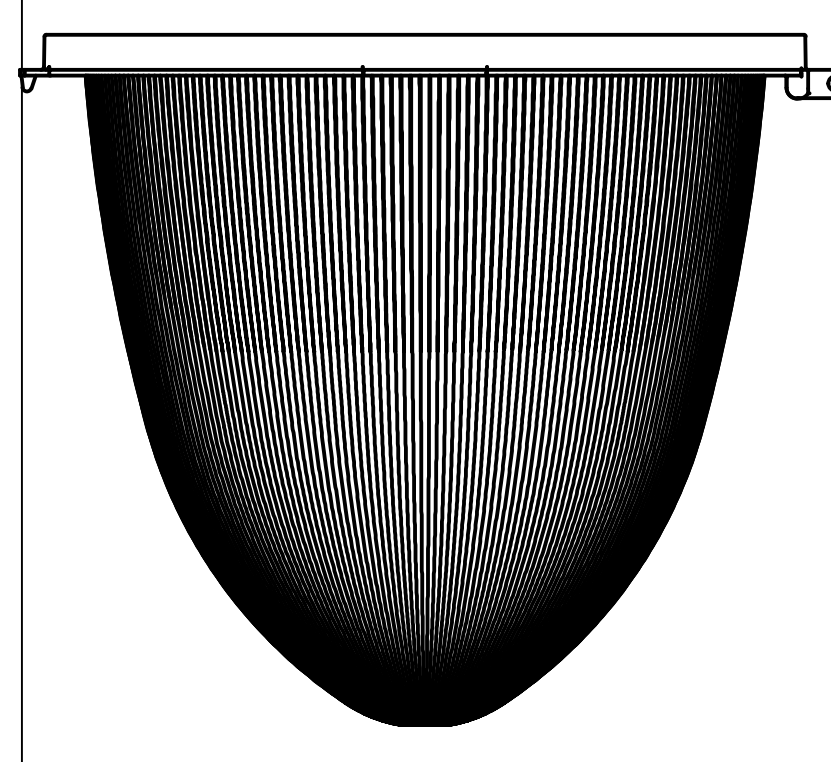


FIG. 3 OPTIONAL TEAR DROP GLASS REFRACTOR/BOTTOM DOOR ASSEMBLY



REVISION HISTORY		DESCRIPTION	ECN
REV B	FIG. 3 NOTE - "HID LAMP ONLY" ADDED, PHOTOCELL ADDED TO THE WIRING SCHEMATIC		
REV C	INSTRUCTIONS FOR "CHICAGO" HS ADDED, "STREET SIDE" LOCATIONS VEIWS ADDED		ECN 04-02-2010 SF
REV D	BOLT AND SET SCREWS INDICATION "A", "B" AND "C" ADDED		ECN 05-26-2010 SF

DRAWN	SF	10/28/2008	
CHECKED			
QA			
MFG			
APPROVED			TITLE 1914 FIXTURE INSTALLATION INSTRUCTIONS HID AND LED FIXTURES
	SIZE	D	DWG NO 1914FIXTURE-INSTALL
			REV D