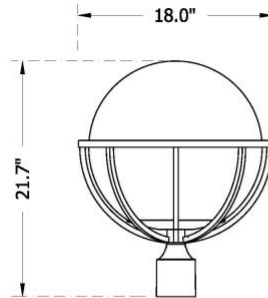
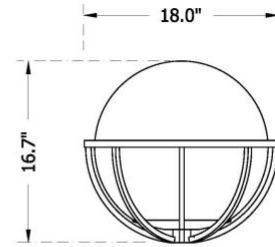


Project Name \_\_\_\_\_ Qty \_\_\_\_\_

Type \_\_\_\_\_ Catalog / Part Number \_\_\_\_\_



1330LED



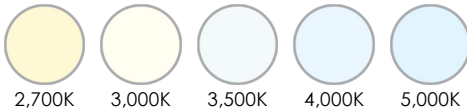
1330LEDA

**Distribution Type**



Type 5

**CCT - Color Temperature (K)**



**7 Year Warranty**



**Certifications**



**Description**

The 1330LED is a historic globe luminaire with a transitional decorative cage. Globes shall be available in the following colors: frosted, white, red or blue. The basket assembly shall be made of 356 cast aluminum alloy having an 18" diameter ring with 8 curved ribs cradling the lower portion of the globe. The dish fitter shall be heavy wall cast aluminum, 356 alloy for high tensile strength. The dish fitter shall be 6" diameter and to attach to the 5" neck of the globe. It shall have an inside diameter opening to 3" diameter pole or tenon. It will be made of dent resistant (DR) acrylic.

**EPA: .7 (ft²) | WEIGHT: 10 LBS**

**Features**

**Mounting Configuration**

- |                                      |                                     |
|--------------------------------------|-------------------------------------|
| <b>1W:</b> Wall Mount                | <b>PT:</b> Post Top                 |
| <b>1A:</b> 1 Arm Mount               | <b>1APT:</b> 1 Arm & Post Top       |
| <b>2A:</b> 2 Arm Mount @ 180°        | <b>2A90:</b> 2 Arm Mount @ 90°      |
| <b>2APT:</b> 2 Arm @ 180° & Post Top | <b>3A:</b> 3 Arms @ 120°            |
| <b>3A90:</b> 3 Arms @ 90°            | <b>3APT:</b> 3 Arm @ 120 & Post Top |
| <b>4A:</b> 4 Arms @ 90°              | <b>4APT:</b> 4 Arm @ 90 & Post Top  |
| <b>1AM:</b> 1 Arm Mid-Mount          | <b>2AM:</b> 2 Arm Mid-Mount @ 180   |
| <b>450PB:</b> Pier Base              |                                     |

**Optional Fuse**

**FHD:** Double Fuse and Holder

**Optional Fixed Dimming Resistor Board**

**FDRB:** Fixed Dimming Resistor Board

**Physical**

**Fixture**

**1330LED:** Post Top  
**1330LEDA:** Arm Mount

**Lens**

**WA:** White Acrylic  
**BA:** Blue Acrylic  
**RA:** Red Acrylic  
**FA:** Frosted Acrylic

<b>Finish</b>	<b>BKT:</b> Black Textured	<b>WHT:</b> White Textured
	<b>PGT:</b> Park Green Textured	<b>ABZT:</b> Architectural Medium Bronze Textured
	<b>DBT:</b> Dark Bronze Textured	<b>CM:</b> Custom Match
	<b>OI:</b> Old Iron	<b>RT:</b> Rust
	<b>WBR:</b> Weathered Brown	<b>CD:</b> Cedar
	<b>WBK:</b> Weathered Black	<b>TT:</b> Two Tone
	<b>VG:</b> Verde Green	<b>SI:</b> Swedish Iron
	<b>OWGT:</b> Old World Gray Textured	

**Light Source**

<b>LED</b>	<b>1L:</b> 1 LED	
<b>CCT - Color Temperature (K)</b>	<b>27:</b> 2,700K	<b>30:</b> 3,000K
	<b>35:</b> 3,500K	<b>40:</b> 4,000K
	<b>50:</b> 5,000K	

<b>Distribution Type</b>	<b>TS:</b> Type Symmetric
--------------------------	---------------------------

**Electrical and control**

<b>Driver</b>	<b>MDL03:</b> 120V-277V, 300mA	<b>MDH03:</b> 347V-480V, 300mA
	<b>MDL04:</b> 120V-277V, 400mA	<b>MDH04:</b> 347V-480V, 400mA
	<b>MDL05:</b> 120V-277V, 525mA	<b>MDH05:</b> 347V-480V, 525mA
	<b>MDL06:</b> 120V-277V, 600mA	<b>MDH06:</b> 347V-480V, 600mA

**Specifications**

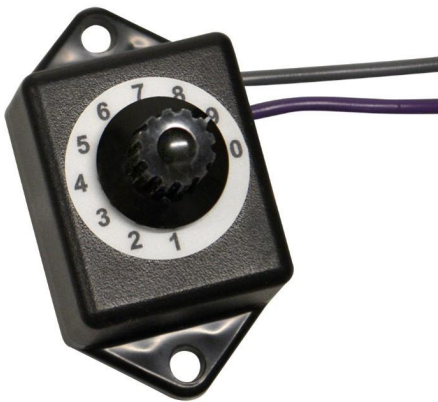
<b>Fitter</b>	The fitter shall be heavy wall cast aluminum for high tensile strength. It includes 4 stainless steel Allen-head set screws for attachment to a pole/tenon, and shall slip fit a 3" OD x 3" tall tenon.
<b>Electronic Drivers</b>	The LED driver shall be <b>remotely mounted</b> in the field, arm, pole or base depending on the selected options, and shall be U.L. Recognized. Driver is <b>INTEGRAL</b> to Pier Base application. It shall be supplied with a quick-disconnect electrical connector on the power supply, providing easy power connections and fixture installation. It shall have overload, overheat and short circuit protection, and have a DC voltage output, constant current design, 50/60HZ. It shall be supplied with line-ground, line-neutral and neutral-ground electrical surge protection in accordance with IEEE/ANSI C62.41.2 guidelines. It shall be a high efficiency driver with a THD less than 20% and a high power factor greater than .9. It shall be dimming capable using a 0-10v signal, consult factory for more information.
<b>UL Listing</b>	UL listed per UL1598 for Wet Locations and CSA 22.2 No. 250.0 for the US and Canada.
<b>Finish</b>	6 Stage Polyester Powdercoat paint system.
<b>Traditional Finishes</b>	Traditional paint finishes are available in Sternberg Lighting's Traditional product line. A range of colors help accent the decorative elements on the product. Finishes are available in textured or smooth.
<b>Sternberg Select Finishes</b>	Available with Sternberg Select Finishes in Verde Green, Swedish Iron, and Old World Gray Textured for a traditional aesthetic.
<b>Warranty</b>	7-year limited warranty (See Website for Terms and Conditions.)
<b>LEDs</b>	<p>The luminaire shall use high output, high brightness LED's, consisting of a two piece assembly complete with Chip on Board (COB) LED component and COB holder frame. The LEDs shall be 100% recyclable; not contain lead, mercury or any other hazardous substances and shall be RoHS compliant. Lumen maintenance shall be determined in accordance with IESNA TM-21, based on LED manufacturer LM-80 test data of no less than 6,000 hours and in-situ testing of the luminaire by an NVLAP accredited Energy Efficient Lighting Products lab. The high-performance white LEDs will have a predicted lumen depreciation of approximately 100,000 hours with greater than 70% of initial output at 25°C. The High Brightness, High Output LED's shall be 4000K (2700K, 3000K, 3500K or 5000K option) correlated color temperature (CCT) with a 70 (minimum) color rendering index (CRI). Consult factory for custom color CCT. The luminaire shall have a minimum _____ (see table) delivered initial lumen rating when operated at steady state with an average ambient temperature of 25°C (77°F).</p> <p><b>CCT Lumen Derate Values from 4,000K</b></p> <p>2,700K (80+ CRI)=.89          3,000K (70+ CRI)=.97          3,500K (80+ CRI)=.93          5,000K (70+ CRI)=1.01</p>
<b>Optics</b>	The luminaire shall be provided with a single, molded silicone omnidirectional optic applied to the LED. The luminaire shall provide a Symmetric light distribution only. The optic shall evenly dispense the light around the interior of the globe for a uniform exterior appearance. Testing shall be done in accordance with IESNA LM-79.
<b>FDRB</b>	10-step field adjustable dimming board. Includes step dimming options from 25%-100%. The unit is conformal coated and UL recognized for use in damp locations.

**Lumen Chart(s)**

Tested with WA lens

Model #	DELIVERED LUMENS	BUG	EFFICACY (LPW)	WATTAGE
1L40TS-MDL06	2070	B1U4G2	79.6	26
1L30TS-MDL06	2005	B1U4G2	77.1	26
1L27TS-MDL06	1825	B1U4G2	70.2	26
1L40TS-MDL05	1665	B1U4G1	79.3	21
1L30TS-MDL05	1615	B1U4G1	76.9	21
1L27TS-MDL05	1465	B1U4G1	69.8	21
1L40TS-MDL04	1380	B1U4G1	81.2	17
1L30TS-MDL04	1335	B1U4G1	78.5	17
1L27TS-MDL04	1215	B1U4G1	71.5	17
1L40TS-MDL03	1070	B0U3G1	89.2	12
1L30TS-MDL03	1035	B0U3G1	86.3	12
1L27TS-MDL03	940	B0U3G1	78.3	12

**Options**



Fixed Dimming Resistor Board (FDRB)



Double Fuse Holder & (2) 3A Fuses (FHD)

**How to order**

Mounting Configuration	Fixture	LED	CCT - Color Temperature (K)	Distribution Type	Driver	Lens	Optional Fuse	Optional Fixed Dimming Resistor Board	Finish <sup>(2)</sup> <sup>(3)</sup>
<b>1W</b> Wall Mount	<b>1330LED</b> Post Top	<b>1L</b> 1 LED	<b>27</b> 2,700K	<b>TS</b> Type Symmetric	<b>MDL03</b> 120V-277V, 300mA	<b>WA</b> White Acrylic	<b>FHD</b> Double Fuse and Holder <sup>(1)</sup>	<b>FDRB</b> Fixed Dimming Resistor Board	<b>BKT</b> Black Textured
<b>PT</b> Post Top	<b>1330LEDA</b> Arm Mount		<b>30</b> 3,000K		<b>MDH03</b> 347V-480V, 300mA	<b>BA</b> Blue Acrylic			<b>WHT</b> White Textured
<b>1A</b> 1 Arm Mount			<b>35</b> 3,500K		<b>MDL04</b> 120V-277V, 400mA	<b>RA</b> Red Acrylic			<b>PGT</b> Park Green Textured
<b>1APT</b> 1 Arm & Post Top			<b>40</b> 4,000K		<b>MDH04</b> 347V-480V, 400mA	<b>FA</b> Frosted Acrylic			<b>ABZT</b> Architectural Medium Bronze Textured
<b>2A</b> 2 Arm Mount @ 180°			<b>50</b> 5,000K		<b>MDL05</b> 120V-277V, 525mA				<b>DBT</b> Dark Bronze Textured
<b>2A90</b> 2 Arm Mount @ 90°					<b>MDH05</b> 347V-480V, 525mA				<b>CM</b> Custom Match
<b>2APT</b> 2 Arm @ 180° & Post Top					<b>MDL06</b> 120V-277V, 600mA				<b>OI</b> Old Iron
<b>3A</b> 3 Arms @ 120°					<b>MDH06</b> 347V-480V, 600mA				<b>RT</b> Rust
<b>3A90</b> 3 Arms @ 90°									<b>WBR</b> Weathered Brown
<b>3APT</b> 3 Arm @ 120 & Post Top									<b>CD</b> Cedar
<b>4A</b> 4 Arms @ 90°									<b>WBK</b> Weathered Black
<b>4APT</b> 4 Arm @ 90 & Post Top									<b>TT</b> Two Tone
<b>1AM</b> 1 Arm Mid-Mount									<b>VG</b> Verde Green
<b>2AM</b> 2 Arm Mid-Mount @ 180									<b>SI</b> Swedish Iron
<b>450PB</b> Pier Base									<b>OWGT</b> Old World Gray Textured

- Notes:**
1. Ships loose for installation in base.
  2. Smooth finishes are available upon request.

3. Custom colors require upcharge.