

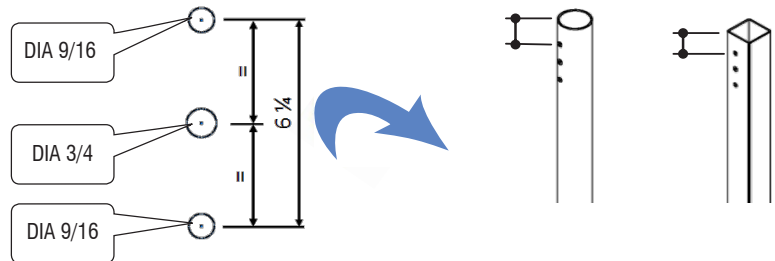
WARNING: TO AVOID FIRE, SHOCK OR DEATH, TURN OFF AND LOCKOUT POWER BEFORE PERFORMING ANY MAINTENANCE.

CAUTION: THIS FIXTURE MUST BE WIRED IN ACCORDANCE WITH THE NATIONAL ELECTRIC CODE AND ALL APPLICABLE LOCAL CODES. PROPER GROUNDING IS REQUIRED. ALL WORK SHOULD BE DONE BY A QUALIFIED ELECTRICIAN.

STEP 1

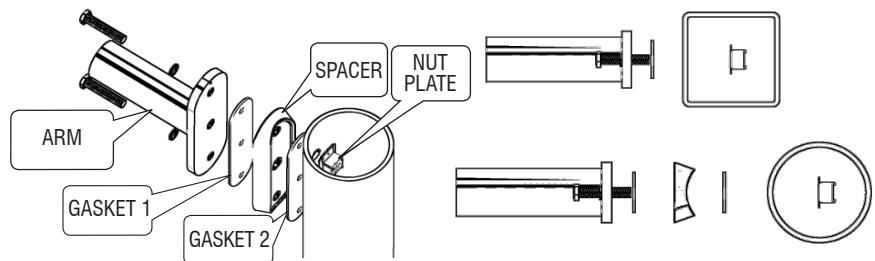
Measure down the appropriate distance to top hole. If nothing is specified, typically use 3 inch.

Drill through one thickness as per dimensions shown.



TYPICAL LAYOUT

Do not use spacer and gasket 2 for mounting application on square pole.



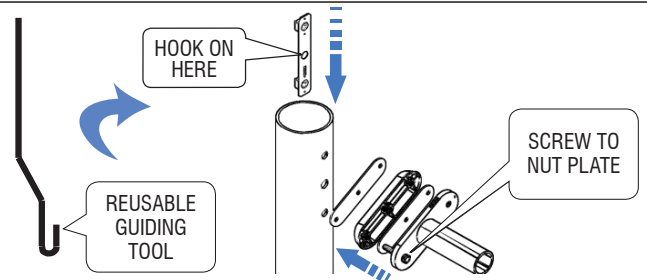
STEP 2

If specified hole is too deep into the pole to reach, an optional tool (Sternberg part #62723) is available.

Hook the guiding tool to the center hole on plate.

Insert plate down the pole to DR latch holes. Insert bolt through all the parts as shown and screw couple of threads on the nut plate.

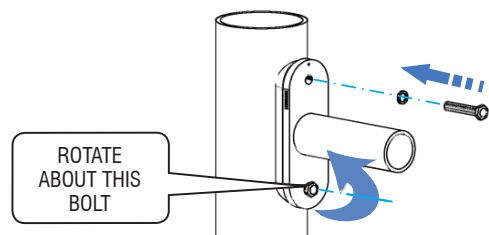
Release and remove tool.



STEP 3

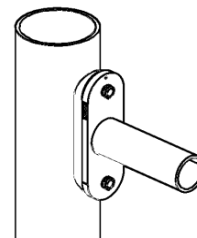
Rotate the assembled parts and align the top bolt hole.

Fasten to nut plate using the second lockwasher and bolt.



STEP 4

Torque both the bolts to 25 ft-lbs.



SternbergLighting

ESTABLISHED 1923 / EMPLOYEE OWNED

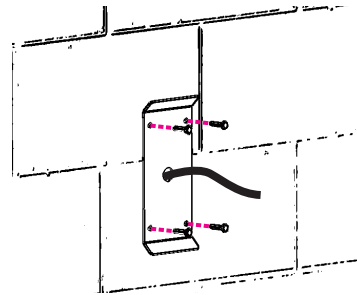
800-621-3376
555 Lawrence Ave., Roselle, IL 60172
info@sternberglighting.com
www.sternberglighting.com

! WARNING: TO AVOID FIRE, SHOCK OR DEATH, TURN OFF AND LOCKOUT POWER BEFORE PERFORMING ANY MAINTENANCE.

! CAUTION: THIS FIXTURE MUST BE WIRED IN ACCORDANCE WITH THE NATIONAL ELECTRIC CODE AND ALL APPLICABLE LOCAL CODES. PROPER GROUNDING IS REQUIRED. ALL WORK SHOULD BE DONE BY A QUALIFIED ELECTRICIAN.

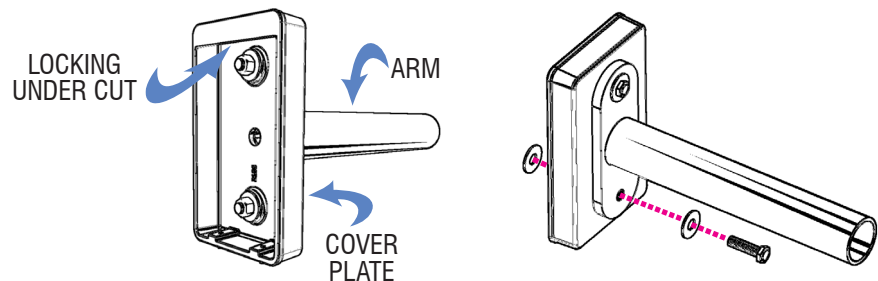
STEP 1

Install wall bracket using appropriate screws (screws by others).



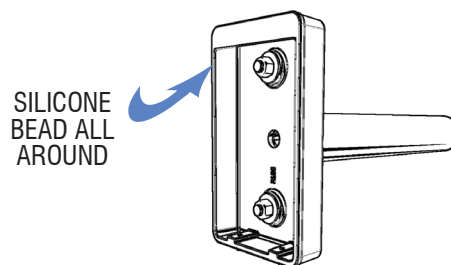
STEP 2

Pre-assemble the arm to cover plate. Fasten hex nuts to bolts securely as shown.



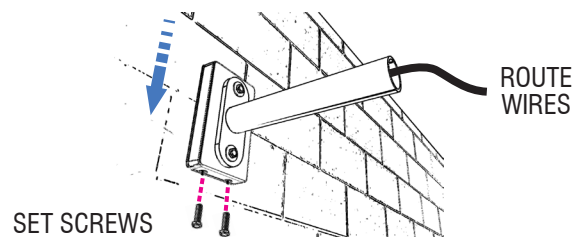
STEP 3

Apply silicone chalk all along the top edge and 2 sides of the wall plate to prevent water from contacting the supply wires.



STEP 4

Route the fixture supply wires through the arm. Slide the wall plate assembly against the wall, lock onto the top flange of the wall bracket. Secure with 2 set screws. Follow the instructions for installing Aspire.



SternbergLighting

ESTABLISHED 1923 / EMPLOYEE OWNED

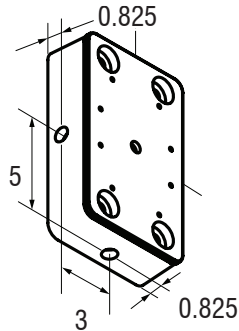
800-621-3376
555 Lawrence Ave., Roselle, IL 60172
info@sternberglighting.com
www.sternberglighting.com

WARNING: TO AVOID FIRE, SHOCK OR DEATH, TURN OFF AND LOCKOUT POWER BEFORE PERFORMING ANY MAINTENANCE.

CAUTION: THIS FIXTURE MUST BE WIRED IN ACCORDANCE WITH THE NATIONAL ELECTRIC CODE AND ALL APPLICABLE LOCAL CODES. PROPER GROUNDING IS REQUIRED. ALL WORK SHOULD BE DONE BY A QUALIFIED ELECTRICIAN.

STEP 1

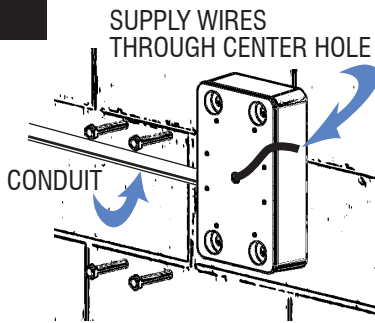
Drill hole on the required faces(s) of casting per shown dimensions. Drill hole for 3/4" conduit, up to 1-3/16" dia. Contractor to determine hole size based on size conduit to be used.



STEP 2

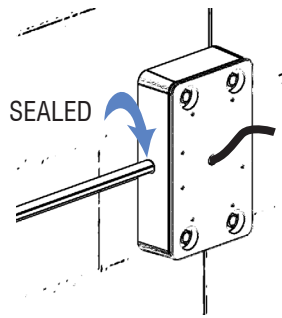
Install casting using appropriate screws (screws by others). And it depends on mounting surface. Should be sufficient for 50# fixture.

Route the conduit into the casting. Then route the supply wires as shown.



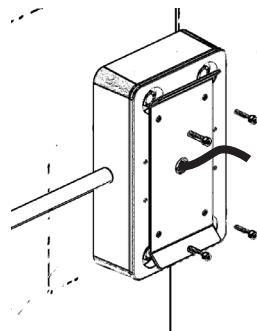
STEP 3

Be sure conduit connection is weather-tight. Wire should protrude a minimum of 20 in.



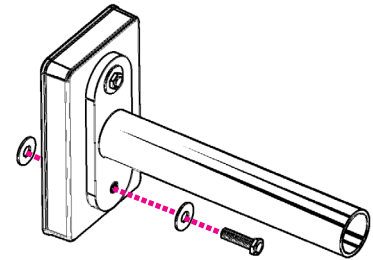
STEP 4

Install bracket with supplied screws.

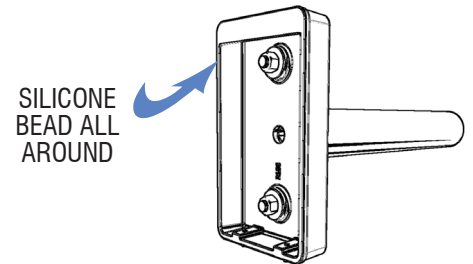


STEP 5

Pre-assemble the arm to cover plate. Fasten hex nuts to bolts securely as shown.

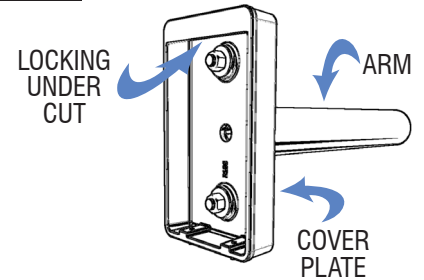


Apply silicone chalk all along the top edge and 2 sides of the wall plate to prevent water from contacting the supply wires.



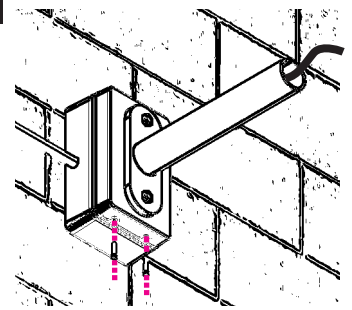
STEP 6

Route the fixture supply wires through the arm. Slide the wall plate assembly against the wall, lock onto the top flange of the wall bracket.



STEP 7

Secure with 2 set screws. Follow the instructions for installing Aspire.



SternbergLighting

ESTABLISHED 1923 / EMPLOYEE OWNED

800-621-3376
555 Lawrence Ave., Roselle, IL 60172
info@sternberglighting.com
www.sternberglighting.com