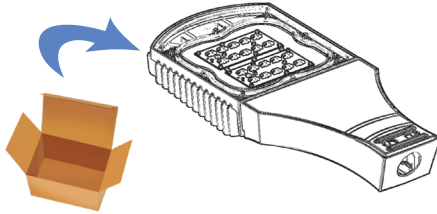


- ! WARNING:** TO AVOID FIRE, SHOCK OR DEATH, TURN OFF AND LOCKOUT POWER BEFORE PERFORMING ANY MAINTENANCE.
- ! CAUTION:** THIS FIXTURE MUST BE WIRED IN ACCORDANCE WITH THE NATIONAL ELECTRIC CODE AND ALL APPLICABLE LOCAL CODES. PROPER GROUNDING IS REQUIRED. ALL WORK SHOULD BE DONE BY A QUALIFIED ELECTRICIAN.

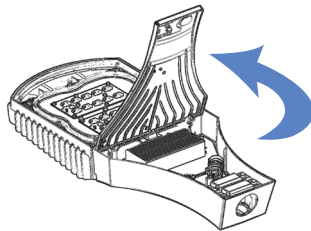
STEP 1

Unpack the fixture.
Handle with care.
Recycle the empty packaging.



STEP 2

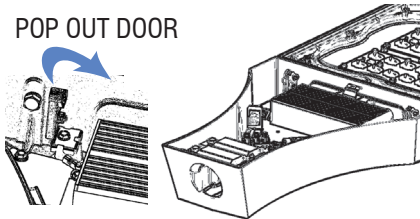
Release the latch and open the cover.



OPTIONAL

POP OUT DOOR

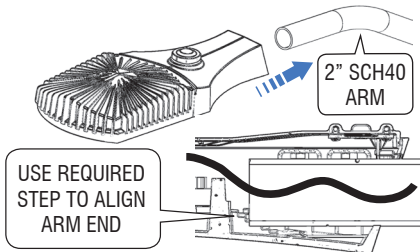
If added clearance is desired, pop out both hinge blocks and detach cover.



STEP 3

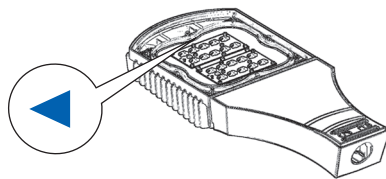
Align rear opening & push the fixture onto the arm.

Route wires into the back of fixture.
Do not pinch wires.



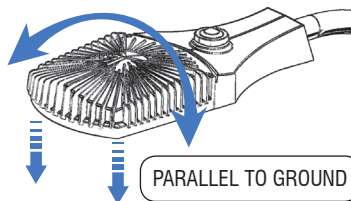
STEP 4

Point the arrow to the street.



STEP 5

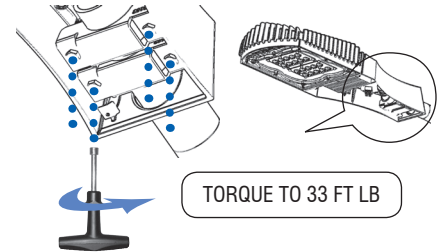
Twist the fixture around the arm axis and choose the suitable step for leveling.
Face fixture parallel to the ground.



STEP 6

Tighten the 4 bolts evenly, making sure fixture stays level.

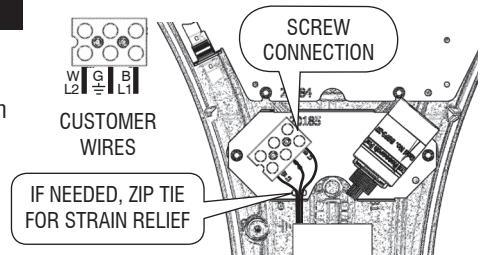
Torque the bolts to 33 ft-lbs minimum.



TORQUE TO 33 FT LB

STEP 7

Route the incoming power cable as shown, secure with wire tie. Secure cable with strain clamp. Connect wires as marked on terminal.



CUSTOMER WIRES

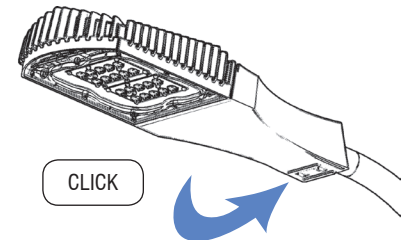
IF NEEDED, ZIP TIE FOR STRAIN RELIEF

SCREW CONNECTION

STEP 8

Close the cover.

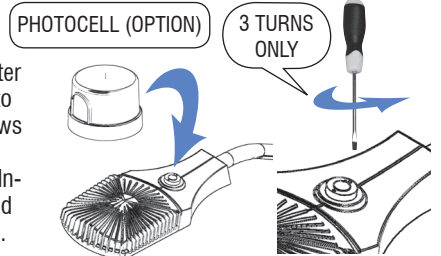
Be sure to press until latch snaps in place.



CLICK

P.C. OPTION

Turn shorting cap counter clockwise and pull out to remove. Loosen 2 screws and orient the socket to north. Tighten screws. Insert photocell, press and turn clockwise to install.



PHOTOCELL (OPTION)

3 TURNS ONLY

HSS OPTION

Choose the side to shield, typically towards the houses.
Fasten the HSS using provided washers and screws.

