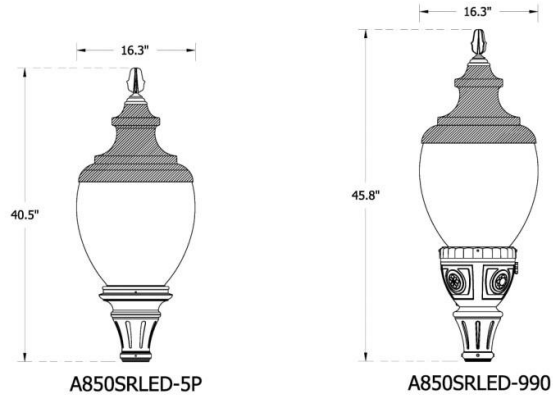
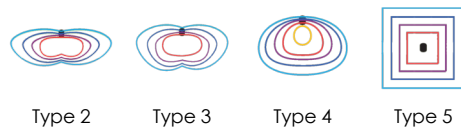


Project Name _____ Qty _____

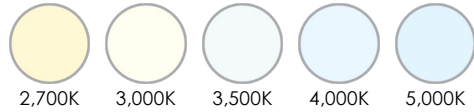
Type _____ Catalog / Part Number _____



Distribution Type



CCT - Color Temperature (K)



7 Year Warranty



IP Rating



Certifications



Description

The A850SRLED Old Town luminaire blends form and function into a classic shape. It is supplied with a cast aluminum finial and a solid, cast aluminum roof which includes optimized heat sinks to provide maximum life and performance for the LED light sources. The acorn is sealed to the cast aluminum roof to provide a moisture free and bug-free optics chamber for the LED light source.

EPA: 1.21 (ft²)
WEIGHT: 43 LBS

Features

Mounting Configuration

- | | |
|--------------------------------------|-------------------------------------|
| 1W: Wall Mount | PT: Post Top |
| 1A: 1 Arm Mount | 1APT: 1 Arm & Post Top |
| 2A: 2 Arm Mount @ 180° | 2A90: 2 Arm Mount @ 90° |
| 2APT: 2 Arm @ 180° & Post Top | 3A: 3 Arms @ 120° |
| 3A90: 3 Arms @ 90° | 3APT: 3 Arm @ 120 & Post Top |
| 4A: 4 Arms @ 90° | 4APT: 4 Arm @ 90 & Post Top |
| 1AM: 1 Arm Mid-Mount | 2AM: 2 Arm Mid-Mount @ 180 |
| 450PB: Pier Base | |

Optional Control Receptacle

- R7:** 7-Pin control receptacle only
- SRR7:** Roof Mounted 7-Pin Control Receptacle Only

Optional Control

- PE:** Twist-Lock Photocontrol (120V-277V)
- PE4:** Twist-Lock Photocontrol (347V-480V)
- SC:** Shorting Cap
- PEC:** Electronic Button Photocontrol (120V-277V)
- PEC4:** Electronic Button Photocontrol (480V)

Optional Fuse

- FHD:** Double Fuse and Holder

Optional House Side Shield

- HSS:** 120° House Side Shield
- BLOC:** Back Light Optical Control

Optional Fixed Dimming Resistor Board

- FDRB:** Fixed Dimming Resistor Board

Physical

Fixture	A850SRLED: A850SRLED	
Fitter	5P: Standard Fitter 74: 74 991: Utility-Fitter 993: Utility-Fitter 995: Utility-Fitter BD5: Fitter, 5" Tenon OL3: Oak-Leaf, 3" tenon 588: Art-Deco Fitter	73: 73 990: Utility-Fitter 992: Utility-Fitter 994: Utility-Fitter BD4: Fitter, 4" Tenon BD7: Fitter, 7" Tenon OL4: Oak-Leaf, 4" tenon C2097: Low-Profile Fitter
Optional Twist Lock Acorn	T: Twist-Lock Option for acorn	
Lens	A: Clear Textured Acrylic Acorn P: Clear Textured Polycarbonate Acorn	
Optional Ring	CDR: Cast Decorative Ring CDRCL: Cast Decorative Ring with Custom Logo PBDR: Perforated Brass Decorative Ring, Raw Brass PBDRP: Perforated Brass Decorative Ring, painted to match	
Optional Receptacle	GFI: 15A Duplex GFI for Utility Fitter	
Optional Terminal Block	TB: Terminal Block	
Finish	BKT: Black Textured PGT: Park Green Textured DBT: Dark Bronze Textured OI: Old Iron WBR: Weathered Brown WBK: Weathered Black VG: Verde Green OWGT: Old World Gray Textured	WHT: White Textured ABZT: Architectural Medium Bronze Textured CM: Custom Match RT: Rust CD: Cedar TT: Two Tone SI: Swedish Iron

Light Source

LED	32L: 32 LEDs 16L: 16 LEDs	24L: 24 LEDs 12L: 12 LEDs
CCT - Color Temperature (K)	27: 2,700K 35: 3,500K 50: 5,000K	30: 3,000K 40: 4,000K
Distribution Type	T2: Type 2 T4: Type 4	T3: Type 3 T5: Type 5

Electrical and control

Driver	MDL018: 120V-277V, 180mA MDL016: 120V-277V, 160mA MDL014: 120V-277V, 140mA MDL008: 120V-277V, 80mA	MDH018: 347V-480V, 180mA MDH016: 347V-480V, 160mA MDH014: 347V-480V, 140mA MDH008: 347V-480V, 80mA
---------------	---	---

Specifications

Available with Intellistreets® Technology	Intellistreets® is an integrated set of solutions offering the capability to see, hear, and record what's happening on your streets, through both cameras and audio sensors.
Fitter	<p>The fitter shall be heavy wall cast aluminum, 356 alloy for high tensile strength. It shall have an 8-1/2" inside diameter opening to attach to the 8" neck of the acorn globe. It includes 4 stainless steel Allen-head set screws for attachment. The fitter shall have a one-piece ring bug gasket to resist insect penetration into lamp assembly.</p> <p>Utility Fitter: The fitter shall be heavy wall cast aluminum, 360 die cast alloy for high tensile strength. It shall have a hinged, tool-less entry door that provides open access to all of the components. The 900 series shall have an optional terminal block for ease of wiring, an optional Twist-Lock Photocontrol receptacle, an optional single GFCI outlet for auxiliary power needs. The top mounted driver mounting plate shall be cast aluminum and provide tool-less removal from the housing using 2 finger latches. The fitter shall have a one-piece ring gasket to resist insect penetration into globe assembly. When supplied with GFCI receptacle a hole will be provided for cord and plug installation with the access door closed. When cord and plug is not in use a filler plug will be provided and shall be tethered to the fitter for easy recovery and installation.</p> <p>Twist-Lock Option: The TL (Twist-Lock) fitter shall have an aluminum die-cast twist-lock mechanism. The tool-less 1/4 turn action allows for easy globe removal and replacement. A die-cast ring assembly is mechanically attached to the globe and is removable if the globe is broken or replaced.</p>
Serviceability	Tool-less access to the driver compartment after the acorn is removed allows for trouble free servicing of the LED Driver and Surge Suppressor.
UL Listing	UL listed per UL1598 for Wet Locations and CSA 22.2 No. 250.0 for the US and Canada.
Electronic Driver	The LED driver shall be securely mounted inside the fixture, for optimized performance and longevity and shall be U.L. Recognized. It shall be supplied with a quick-disconnect electrical connector on the power supply, providing easy power connections and fixture installation. It shall have overload, overheat and short circuit protection, and have a DC voltage output, constant current design, 50/60HZ. It shall be supplied with line-ground, line-neutral and neutral-ground electrical surge protection in accordance with IEEE/ANSI C62.41.2 guidelines. It shall be a high efficiency driver with a THD less than 20% and a high power factor greater than .9. It shall be dimming capable using a 0-10v signal, consult factory for more information.
IP Rating	IP65 rated
Finish	6 Stage Polyester Powdercoat paint system.
Traditional Finishes	Traditional paint finishes are available in Sternberg Lighting's Traditional product line. A range of colors help accent the decorative elements on the product. Finishes are available in textured or smooth.
Sternberg Select Finishes	Available with Sternberg Select Finishes in Verde Green, Swedish Iron, and Old World Gray Textured for a traditional aesthetic.
Warranty	7-year limited warranty (See Website for Terms and Conditions.)
LEDs	<p>The luminaire shall be fully shielded and use high output, high brightness LEDs in a downward position to maximize efficiency. The LEDs are mounted to maximize thermal transfer to the heat sink surface. The LEDs shall be 100% recyclable; not contain lead, mercury or any other hazardous substances and shall be RoHS compliant. Lumen maintenance shall be determined in accordance with IESNA TM-21, based on LED manufacturer LM-80 test data of no less than 6,000 hours and in-situ testing of the luminaire by an NVLAP accredited Energy Efficient Lighting Products lab. The high-performance white LEDs will have a predicted lumen depreciation of approximately 100,000 hours with greater than 70% of initial output at 25°C. The high brightness, high-output white LEDs shall be 4000K nominal (2700K, 3000K, 3500K or 5000K optional) correlated color temperature (CCT) with a 70 (minimum) color rendering index (CRI). Consult factory for custom CCT or CRI. The luminaire shall have a minimum _____ (see table) delivered initial lumens when operated at steady state with an average ambient temperature of 25°C (77°F).</p> <p>CCT Lumen Derate Values from 4,000K</p> <p>2,700K (70+ CRI)=.92 3,000K (70+ CRI)=.95 3,500K (70+ CRI)=.97 5,000K (70+ CRI)=1.00</p>

Optics	The luminaire shall be provided with individual, refractor type optics applied to each LED. The luminaire shall provide Type ____ (2, 3, 4 or 5) light distribution per the IESNA classifications. Testing shall be done in accordance with IESNA LM-79.
FDRB	10-step field adjustable dimming board. Includes step dimming options from 25%-100%. The unit is conformal coated and UL recognized for use in damp locations.
Photocontrols	<p>Button Style: The photocontrol shall be mounted on the fixture and pre-wired to driver. The electronic button type photocontrol is instant on with a 5-10 second turn off, and shall turn on at 1.5 footcandles with a turn-off at 2-3 footcandles. See pole spec sheet for pole mounted version.</p> <p>Twist-Lock Style (Roof Mount): The photocontrol shall be mounted on the roof and prewired to driver. The twist lock type photocontrol is instant on with a 3-6 second turn off, and shall turn on at 1.5 footcandles with a turnoff at 2-3 footcandles. Photocontrol is 120-277 volt.</p> <p>Twist-Lock Style (Utility Fitter): The photocontrol shall be mounted in the utility fitter and prewired to driver. Utility fitter includes acrylic window to read ambient light levels. The twist lock type photocontrol is instant on with a 3-6 second turn off, and shall turn on at 1.5 footcandles with a turnoff at 2-3 footcandles. Photocontrol is 120-277 volt and warranted for 6 years</p>

Lumen Chart(s)

Model #	T2 DELIVERED LUMENS	BUG	EFFICACY (LPW)	T3 DELIVERED LUMENS	BUG	EFFICACY (LPW)	T4 DELIVERED LUMENS	BUG	EFFICACY (LPW)	T5 DELIVERED LUMENS	BUG	EFFICACY (LPW)	WATTAGE
32L40T_-MDL016	14435	B3U4G3	107.7	14545	B3U3G3	108.5	14725	B3U3G3	109.9	15255	B4U3G3	113.8	134
32L30T_-MDL016	13765	B3U4G3	102.7	13870	B3U3G3	103.5	14040	B3U3G3	104.8	14545	B4U3G3	108.5	134
32L27T_-MDL016	12445	B3U3G3	92.9	12540	B3U3G3	93.6	12695	B3U3G3	94.7	13150	B3U3G2	98.1	134
24L40T_-MDL018	11945	B3U3G3	103.0	11990	B3U3G3	103.4	12240	B3U3G3	105.5	12640	B3U3G2	109.0	116
24L30T_-MDL018	11390	B3U3G3	98.2	11430	B3U3G3	98.5	11670	B3U3G3	100.6	12050	B3U3G2	103.9	116
24L27T_-MDL018	10295	B2U3G2	88.8	10335	B3U3G3	89.1	10550	B3U3G3	90.9	10895	B3U3G2	93.9	116
24L40T_-MDL014	9655	B2U3G2	111.0	9685	B3U3G3	111.3	9885	B3U3G3	113.6	10215	B3U3G2	117.4	87
24L30T_-MDL014	9205	B2U3G2	105.8	9235	B3U3G3	106.1	9425	B3U3G3	108.3	9740	B3U3G2	112.0	87
24L27T_-MDL014	8325	B2U3G2	95.7	8350	B2U3G2	96.0	8520	B2U3G2	97.9	8805	B3U3G2	101.2	87
16L40T_-MDL014	6610	B2U3G2	112.0	6570	B2U3G2	111.4	6610	B2U3G2	112.0	6840	B3U3G2	115.9	59
16L30T_-MDL014	6300	B2U3G2	106.8	6265	B2U3G2	106.2	6300	B2U3G2	106.8	6520	B3U3G2	110.5	59
16L27T_-MDL014	5700	B2U3G2	96.6	5665	B2U3G2	96.0	5700	B2U3G2	96.6	5895	B2U3G1	99.9	59
12L40T_-MDL014	4945	B1U3G1	109.9	4920	B2U3G2	109.3	4910	B2U3G2	109.1	5155	B2U3G1	114.6	45
12L30T_-MDL014	4715	B1U3G1	104.8	4690	B2U3G2	104.2	4680	B2U3G2	104.0	4915	B2U3G1	109.2	45
12L27T_-MDL014	4265	B1U3G1	94.8	4240	B1U3G1	94.2	4235	B1U3G1	94.1	4445	B2U3G1	98.8	45
12L40T_-MDL008	3020	B1U3G1	116.2	3020	B1U3G1	116.2	3005	B1U3G1	115.6	3150	B2U3G1	121.2	26
12L30T_-MDL008	2880	B1U3G1	110.8	2880	B1U3G1	110.8	2865	B1U3G1	110.2	3005	B2U3G1	115.6	26
12L27T_-MDL008	2605	B1U3G1	100.2	2605	B1U3G1	100.2	2590	B1U3G1	99.6	2715	B2U3G1	104.4	26



5P Fitter
10-1/8" W x 10-3/8" H
Fits 3" OD x 3" tall tenon/pole



BD4 Fitter
10-1/8" W x 10-1/8" H
Fits 4" OD x 5" tall tenon/pole



BD5 Fitter
10-1/8" W x 10-1/4" H
Fits 5" OD x 6" tall tenon/pole



BD7 Fitter
10-1/8" W x 11-3/4" H
Fits 7" OD x 1" tall tenon/pole



588 Fitter
14-1/2" W x 14-1/4" H
Fits 3" OD x 3" tall tenon/pole



C2097 Fitter
10" W x 3-1/4" H
Fits 7" OD x 1" tall tenon/pole



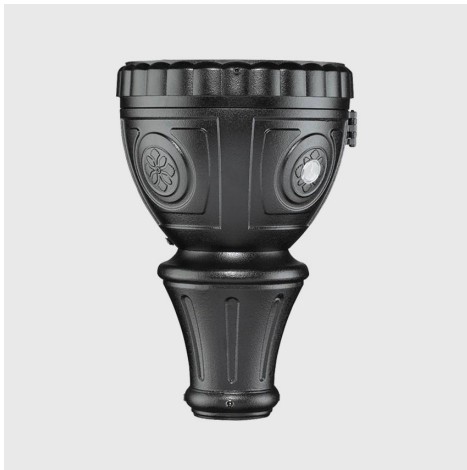
992 Utility Fitter
10-1/2" W x 13-1/8" H
Fits 3" OD x 3" tall tenon/pole



991 Utility Fitter
10-1/2" W x 13-1/8" H
Fits 3" OD x 3" tall tenon/pole



OL3 (or OL4) Fitter
10-1/8" W x 10-3/8" H
Fits 3" (or 4") OD x 3" tall tenon/pole



990 (or 994) Utility Fitter
10-1/2" W x 15-3/4" H
Fits 3" (or 4") OD x 3" tall tenon/pole



993 (or 995) Utility Fitter
10-1/2" W x 15-3/4" H
Fits 3" (or 4") OD x 3" tall tenon/pole



73 (or 74) Fitter
9-3/4" W x 13-1/4" H
Fits 3" (or 4") OD x 4" tall tenon/pole

Options



Perforated Brass Decorative Ring (PBDR)



Cast Decorative Ring (CDR)



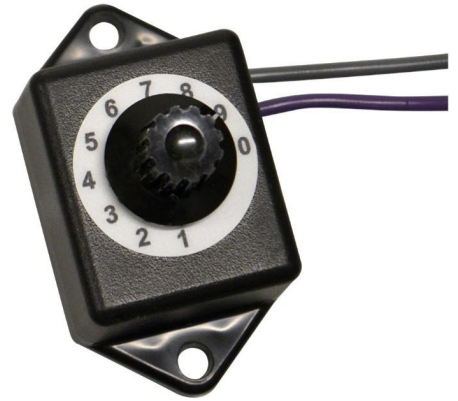
Twist-Lock Ring (TL)



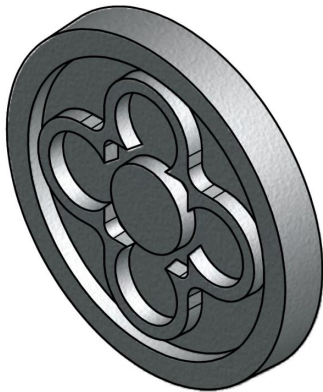
Solid Roof with NEMA Receptacle (**SRR7**)



Button Photocell (**PEC**)



Fixed Dimming Resistor Board (**FDRB**)



Custom Logo (Example) (**CL**)

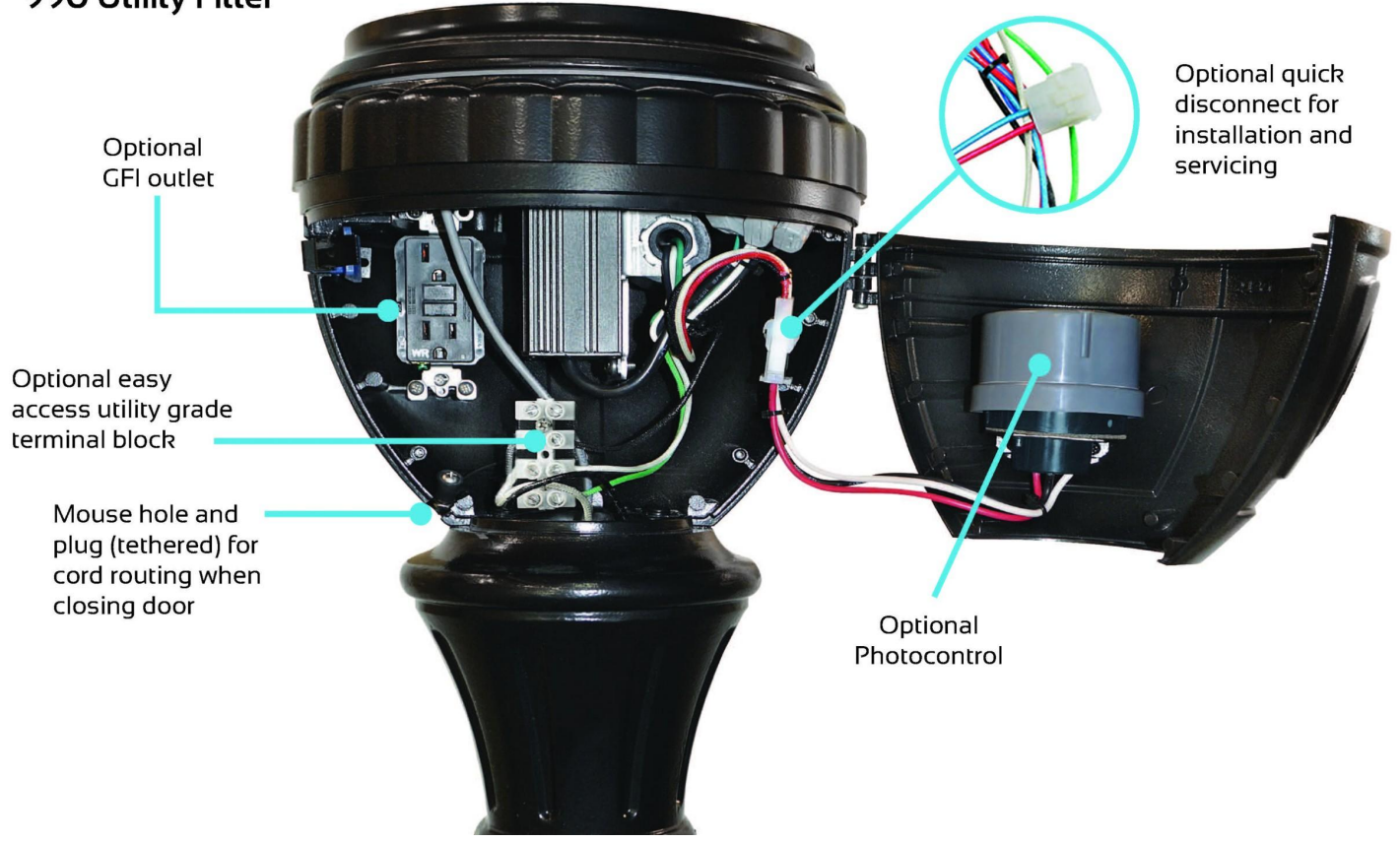


Double Fuse Holder & (2) 3A Fuses (**FHD**)

Utility Fitter Details

Optional Accessories

990 Utility Fitter



How to order

Mounting Configuration	Fixture	Fitter	Optional Twist Lock Acorn	LED	CCT - Color Temperature (K)	Distribution Type	Driver	Lens			
1W Wall Mount	A850SRLED A850SRLED	5P Standard Fitter ⁽¹⁾	T Twist-Lock Option for acorn	32L 32 LEDs	27 2,700K	T2 Type 2	MDL018 120V-277V, 180mA ⁽³⁾	A Clear Textured Acrylic Acorn			
PT Post Top		73 73		24L 24 LEDs	30 3,000K				T3 Type 3	MDH018 347V-480V, 180mA ⁽³⁾	P Clear Textured Polycarbonate Acorn
1A 1 Arm Mount		74 74		16L 16 LEDs	35 3,500K				T4 Type 4	MDL016 120V-277V, 160mA ⁽⁴⁾	
1APT 1 Arm & Post Top		990 Utility-Fitter ⁽¹⁾		12L 12 LEDs	40 4,000K				T5 Type 5	MDH016 347V-480V, 160mA ⁽⁴⁾	
2A 2 Arm Mount @ 180°		991 Utility-Fitter ⁽¹⁾		50 5,000K					MDH016 347V-480V, 160mA ⁽⁴⁾		
2A90 2 Arm Mount @ 90°		992 Utility-Fitter ⁽¹⁾							MDL014 120V-277V, 140mA ⁽⁵⁾		
2APT 2 Arm @ 180° & Post Top		993 Utility-Fitter ⁽¹⁾							MDH014 347V-480V, 140mA ⁽⁵⁾		
3A 3 Arms @ 120°		994 Utility-Fitter ⁽¹⁾							MDL008 120V-277V, 80mA ⁽⁶⁾		
3A90 3 Arms @ 90°		995 Utility-Fitter ⁽¹⁾							MDH008 347V-480V, 80mA ⁽⁶⁾		
3APT 3 Arm @ 120 & Post Top		BD4 Fitter, 4" Tenon									
4A 4 Arms @ 90°		BD5 Fitter, 5" Tenon									
4APT 4 Arm @ 90 & Post Top		BD7 Fitter, 7" Tenon									
1AM 1 Arm Mid-Mount		OL3 Oak-Leaf, 3" tenon									
2AM 2 Arm Mid-Mount @ 180		OL4 Oak-Leaf, 4" tenon									
450PB Pier Base		588 Art-Deco Fitter									
		C2097 Low-Profile Fitter ⁽²⁾									

Notes:

- 1. Fitter available with "Twist-lock" acorn option
- 2. Consult factory for use on concrete poles.
- 3. 24L system only.
- 4. 32L system only.
- 5. 24L, 16L or 12L system only.
- 6. 12L system only.

How to order

Optional Control Receptacle ⁽⁷⁾	Optional Control	Optional Fuse ⁽¹⁰⁾	Optional Ring	Optional Receptacle	Optional Terminal Block	Optional House Side Shield ⁽¹²⁾	Optional Fixed Dimming Resistor Board ⁽¹³⁾	Finish
R7 7-Pin control receptacle only ⁽⁸⁾ SRR7 Roof Mounted 7-Pin Control Receptacle Only	PE Twist-Lock Photocontrol (120V-277V) ⁽⁹⁾ PE4 Twist-Lock Photocontrol (347V-480V) ⁽⁹⁾ SC Shorting Cap ⁽⁹⁾ PEC Electronic Button Photocontrol (120V-277V) PEC4 Electronic Button Photocontrol (480V)	FHD Double Fuse and Holder	CDR Cast Decorative Ring CDRCL Cast Decorative Ring with Custom Logo ⁽¹¹⁾ PBDR Perforated Brass Decorative Ring, Raw Brass PBDRP Perforated Brass Decorative Ring, painted to match	GFI 15A Duplex GFI for Utility Fitter ⁽⁸⁾	TB Terminal Block ⁽⁸⁾	HSS 120° House Side Shield BLOC Back Light Optical Control	FDRB Fixed Dimming Resistor Board	BKT Black Textured ⁽¹⁴⁾ WHT White Textured ⁽¹⁴⁾ PGT Park Green Textured ⁽¹⁴⁾ ABZT Architectural Medium Bronze Textured ⁽¹⁴⁾ DBT Dark Bronze Textured ⁽¹⁴⁾ CM Custom Match ⁽¹⁵⁾ OI Old Iron ⁽¹⁵⁾ RT Rust ⁽¹⁵⁾ WBR Weathered Brown ⁽¹⁵⁾ CD Cedar ⁽¹⁵⁾ WBK Weathered Black ⁽¹⁵⁾ TT Two Tone ⁽¹⁵⁾ VG Verde Green SI Swedish Iron OWGT Old World Gray Textured

Notes:

- 7. Not for use with FDRB.
- 8. For 900 series utility fitter only.
- 9. Requires control receptacle.
- 10. Ships loose for installation in base.
- 11. Consult factory for specification details.

- 12. Not for use with T5 optic.
- 13. Not for use with R7.
- 14. Smooth finishes are available upon request.
- 15. Custom colors require upcharge.