



3300 GATEWAY SERIES

ARCHITECTURAL POLE

DIMENSIONS
18" Ø
48" TALL

5 YEAR WARRANTY

UL LISTED

ETL LISTED

CLICK FOR FAQ'S

JOB NAME _____

FIXTURE TYPE _____

MEMO _____

BUILD A PART NUMBER

ORDERING EXAMPLE: 3318P5-.188-BCC-GFILPIUC-SH/BKT

Base Model	Height	Shaft	Wall Thickness	Post Center Cap	Option Burial	Option Photocell	Option Ground Fault Breaker	Option Flag Pole Holder	Option Banner Arms	Option Planter Arms	Option Sign Arms	Option Speaker Hub	Option Sign Bracket	Option Steel Wreath Hook	Finish

Model

• 33

Height

• 8 • 12 • 16 • 20
• 10 • 14 • 18

Shaft

- T5: 5"-3" Tapered Smooth
- T54: 5"-4" Tapered Smooth
- T6: 6"-3" Tapered Smooth
- T64: 6"-4" Tapered Smooth
- P5: 5" Straight Smooth
- P6¹: 6" Straight Smooth
- FP5: 5" Straight Fluted
- FP6²: 6" Straight Fluted

¹ Not available in .125 wall.

² Not available in .250 wall.

Wall Thickness

- .188: 3/16" Wall Thickness
- .250: 1/4" Wall Thickness

Post Center Cap (if required)

(Click here to view post cap sheet)

- BCC • FCC • SCC • TFCC
- SSCC • RCC • PCC

Options (Click here to view accessories sheet)

- DB4 Direct Burial mounting style pole, with 4' direct burial section (or advise other length)
- HXB Helix Base mounting style pole
- PCD Electronic Button Photocontrol, mounted on an access door (120v-277v)
- PCD4 Electronic Button Photocontrol, mounted on an access door (480v)
- GFI IUC 15 Amp duplex GFCI receptacles with a standard in-use cover
- GFI LPIUC 15 Amp duplex GFCI receptacles with a low-profile in-use cover

- GFB Remote Ground Fault Breaker installed in pole base (for use with NON-GFCI receptacles)
- FH Cast Aluminum flag holder mount, for use with 1" diameter flag pole
- SBA Single Banner Arm, "PM" style mount
- DBA Double Banner Arms, "PM" style mount
- SBAR Single Banner Arm and Ring, for triangle banners, "PM" style mount
- HSBA Single Banner Arm, HUB mount style mount
- HDBA Double Banner Arms, HUB mount style mount
- BDBA6 Double Banner Arms, Break-Away style, to break with 60MPH wind gust
- BDBA9 Double Banner Arms, Break-Away style, to break with 90MPH wind gust
- C5SBA Single Banner Arm, Clamp-Style mount, for 5" diameter poles
- C5DBA Double Banner Arms at 180°, Clamp-Style mount, for 5" diameter poles
- DHPA Double Hooked Planter Arm
- SHPA Single Hooked Planter Arm
- DSPA Double Stepped Planter Arm
- SSPA Single Stepped Planter Arm
- PA478 Cast aluminum decorative planter arm
- SA78 Small cast aluminum decorative sign arm, with 24" long channel for blade sign by others
- SA478 Large cast aluminum decorative sign arm, with 24" long channel for blade sign by others
- SABA Banner arm style sign arm, with 24" long channel for blade sign by others
- SH Female threaded speaker hub, advise thread size
- SB Sign Bracket, vertically mounted on pole shaft
- WHK Steel wreath hook

Finish (Click here to view paint finish sheet)

Standard Finishes³ (Click here to view paint finish sheet)

- BKT Black Textured
- WHT White Textured
- PGT Park Green Textured
- ABZT Architectural Medium Bronze Textured
- DBT Dark Bronze Textured

³ Smooth finishes are available upon request.

Sternberg Select Finishes

- VG Old Iron
- SI Old Iron
- OWGT Old World Gray Textured

Standard Urban Finishes (Click here to view paint finish sheet)

- UGMT Gun Metal Textured
- UGM Gun Metal Matte
- UBT Urban Bronze Textured
- UB Urban Bronze Matte
- USLT Urban Silver Textured
- USL Urban Silver Matte
- UWHT Urban White Textured
- UWH Urban White Matte

Custom Finishes⁴

- CM Custom Match
- OI Old Iron
- RT Rust
- WBR Weathered Brown
- CD Cedar
- WBK Weathered Black
- TT Two Tone

⁴ Custom colors require upcharge.



SternbergLighting

ESTABLISHED 1923

800-621-3376
555 Lawrence Ave., Roselle, IL 60172
contactus@sternberglighting.com
www.sternberglighting.com

Specifications

Construction

The one piece base is made of a square cast aluminum shoe base with a 3/4" thick floor. The base transitions to an 8" diameter lower section made of ASTM 6063 extruded aluminum. The lower section transitions to a 5" (or 6") diameter shaft at 48" above grade (contact factory for alternate transition heights). Base includes an 18" round decorative base cover and a 8" to 5" (or 8" to 6") decorative transition collar.

Tenon

Standard tenon size to be 3" OD x 3" tall. Contact factory for additional sizes.

Shaft

The **straight smooth shaft** shall be made of ASTM 6063 extruded aluminum and tempered to a T6 condition

The **tapered smooth shaft** shall be made of ASTM 6063 extruded aluminum and tempered to a T6 condition

The **straight fluted shaft** shall be made of ASTM 6061 extruded aluminum and tempered to a T6 condition.

Installation

Four 3/4" (or 1") diameter, hot-dipped galvanized "L" type anchor bolts shall be provided with the post for anchorage, they shall be mounted in a 11-1/2" bolt circle. Post will be

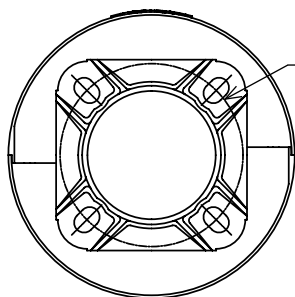
provided with an access door which shall be secured with tamper proof stainless steel hardware, includes a grounding stud behind the access door. 16' poles and shorter use 3/4" bolts, 18' poles and taller use 1" bolts.

Warranty

Five-year limited warranty. See product and finish warranty guide for details.

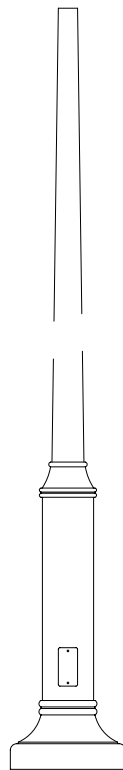
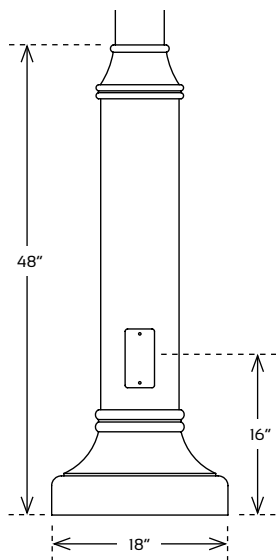
Finish

Refer to website for details.

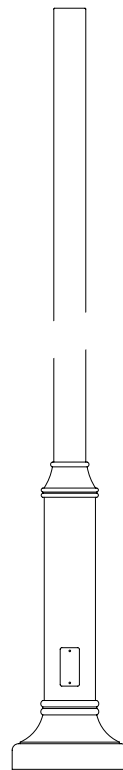


11-1/2" DIA
BOLT
CENTER

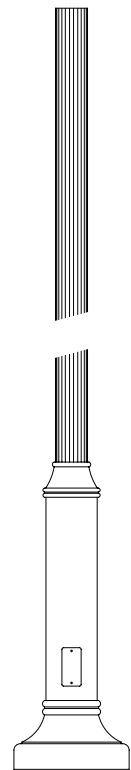
ACCESS DOOR



TAPERED
SMOOTH
SHAFT



STRAIGHT
SMOOTH
SHAFT



STRAIGHT
FLUTED
SHAFT



SternbergLighting

ESTABLISHED 1923

800-621-3376
555 Lawrence Ave., Roselle, IL 60172
contactus@sternberglighting.com
www.sternberglighting.com

3300 GATEWAY SERIES

EPA Chart - AASHTO 2009

ARCHITECTURAL POLE

POLE HEIGHT	90 MPH	100 MPH	110 MPH	120 MPH	130 MPH	140 MPH	150 MPH
T54 5" - 4" Stepped Taper Shaft - 0.188" Wall Thickness							
10	58.09	46.72	38.49	32.25	27.41	23.58	20.49
12	47.40	38.00	31.26	26.17	22.22	19.09	16.57
14	39.71	31.71	26.05	21.78	18.46	15.84	13.73
16	33.87	26.92	22.08	18.42	15.59	13.36	11.56
18	28.81	22.78	18.63	15.51	13.10	11.20	9.67
20	24.47	19.21	15.66	13.01	10.95	9.34	8.04
T54 5" - 4" Stepped Taper Shaft - 0.25" Wall Thickness							
10	63.22	50.87	41.92	35.14	29.87	25.70	22.33
12	51.68	41.46	34.12	28.57	24.27	20.85	18.11
14	43.38	34.68	28.50	23.84	20.22	17.36	15.05
16	37.09	29.53	24.23	20.24	17.14	14.69	12.72
18	31.64	25.07	20.52	17.11	14.46	12.37	10.69
20	26.98	21.24	17.34	14.42	12.16	10.38	8.95
T64 6" - 4" Stepped Taper Shaft - 0.188" Wall Thickness							
10	58.40	47.21	38.93	32.64	27.75	23.88	20.76
12	47.77	38.56	31.77	26.61	22.61	19.44	16.88
14	40.12	32.35	26.62	22.28	18.90	16.23	14.08
16	34.33	27.64	22.72	18.98	16.09	13.80	11.95
18	29.32	23.57	19.33	16.13	13.64	11.68	10.11
20	25.02	20.07	16.43	13.67	11.54	9.86	8.51
T64 6" - 4" Stepped Taper Shaft - 0.25" Wall Thickness							
10	63.50	51.34	42.34	35.50	30.19	25.99	22.59
12	52.00	41.99	34.60	28.99	24.64	21.19	18.41
14	43.75	35.29	29.05	24.32	20.64	17.73	15.39
16	37.50	30.21	24.84	20.77	17.61	15.11	13.10
18	32.10	25.82	21.20	17.69	14.98	12.83	11.11
20	27.48	22.06	18.07	15.05	12.72	10.88	9.40
P5 5" Stepped Straight Shaft - 0.188" Wall Thickness							
10	57.71	46.32	38.13	31.93	27.11	23.31	20.24
12	46.94	37.52	30.83	25.78	21.87	18.76	16.27
14	39.16	31.15	25.54	21.32	18.05	15.46	13.38
16	33.24	26.28	21.49	17.90	15.12	12.92	11.16
18	28.10	22.04	17.97	14.92	12.56	10.71	9.22
20	23.68	18.39	14.92	12.34	10.35	8.79	7.54
P5 5" Stepped Straight Shaft - 0.25" Wall Thickness							
10	62.82	50.47	41.55	34.81	29.57	25.43	22.08
12	51.20	40.97	33.68	28.17	23.91	20.52	17.80
14	42.82	34.10	27.98	23.37	19.80	16.97	14.70
16	36.44	28.87	23.64	19.70	16.65	14.24	12.31
18	30.91	24.32	19.85	16.50	13.91	11.87	10.23
20	26.17	20.40	16.58	13.74	11.54	9.82	8.43
P6 6" Stepped Straight Shaft - 0.188" Wall Thickness							
10	57.86	46.73	38.51	32.26	27.41	23.57	20.48
12	47.09	37.97	31.25	26.15	22.19	19.06	16.53
14	39.31	31.65	26.00	21.72	18.40	15.78	13.67
16	33.39	26.83	22.00	18.34	15.51	13.27	11.48
18	28.25	22.64	18.51	15.40	12.99	11.08	9.56
20	23.83	19.03	15.51	12.85	10.80	9.19	7.90
P6 6" Stepped Straight Shaft - 0.25" Wall Thickness							
10	62.95	50.86	41.92	35.13	29.85	25.68	22.31
12	51.33	41.40	34.08	28.53	24.22	20.81	18.06
14	42.94	34.59	28.43	23.76	20.14	17.28	14.97
16	36.56	29.40	24.12	20.12	17.03	14.58	12.62
18	31.03	24.89	20.38	16.96	14.32	12.23	10.56
20	26.28	21.01	17.15	14.23	11.98	10.20	8.78

* Consult factory for other heights.
 ** All EPA values expressed in square feet.



SternbergLighting

ESTABLISHED 1923

800-621-3376
 555 Lawrence Ave., Roselle, IL 60172
 contactus@sternberglighting.com
 www.sternberglighting.com