

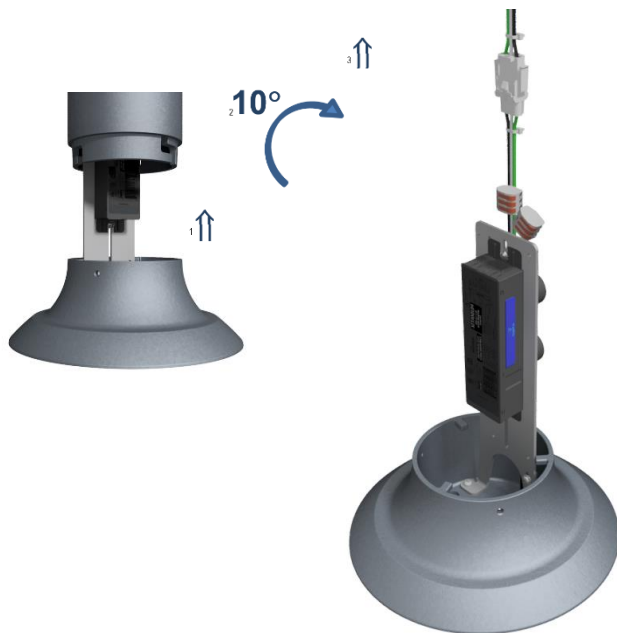


<b>Installation Instructions</b>	<b>Product: LU300 - LUNARIA Bollard</b>
<b>Effective Date: 10/14/2019</b>	<b>Part Description: Customer Installation Instructions</b>

	<b>WARNING:</b> To avoid fire, shock or death, turn off and lockout power before performing any maintenance.
	<b>CAUTION:</b> This Fixture must be wired in accordance with the National Electric Code (NEC) and all applicable local codes. Proper grounding is required. A qualified electrician must do all work.

	<p><b>Step 1:</b> Unpack Bollard. Handle with care. Recycle the empty packaging.</p>
--	--

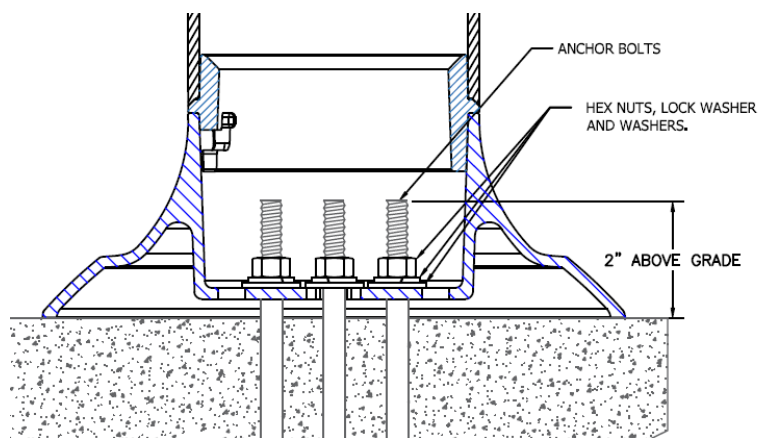
	<p><b>Step 2:</b> Remove three set screws from base to separate it with top of bollard and save them.</p>
---	---



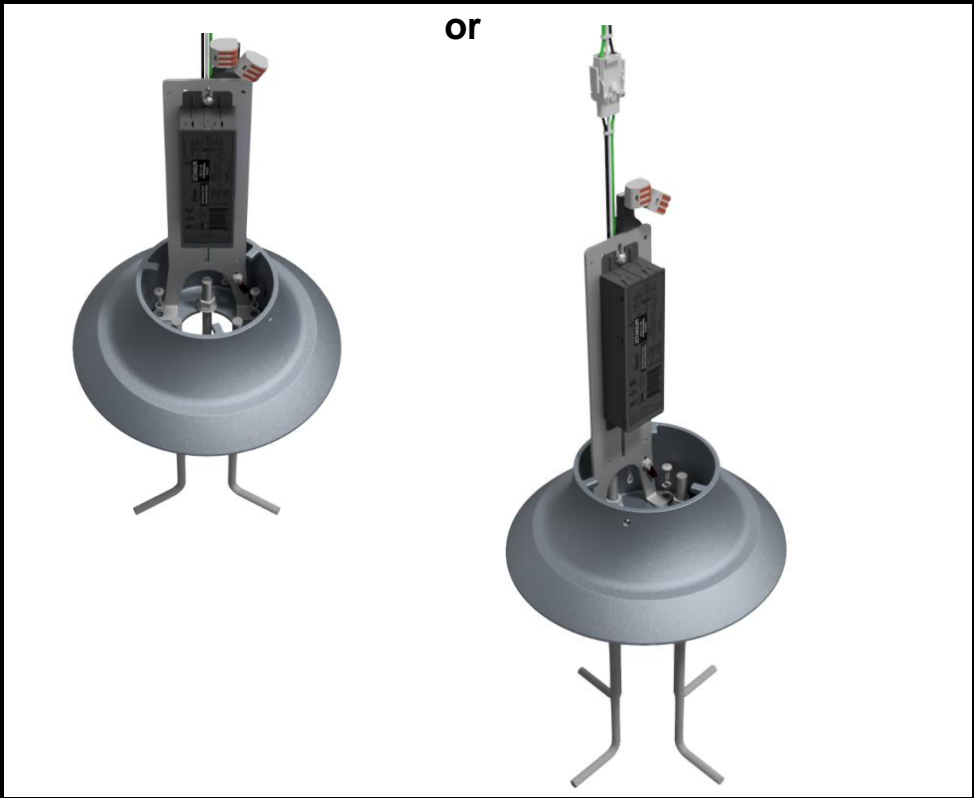
**Step 3:** Carefully lift the top of bollard - ↑UP then ↻TWIST in 10° and ↑UP as shown and put to the side.  
**NOTE:** Do not disconnect wires with driver assembly.



**Step 4:** Remove the LED driver-bracket assembly and save the two sets of screws and washers.

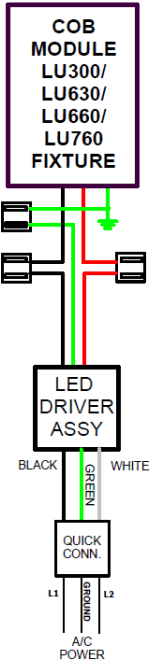


**Step 5:** After the anchor assembly has been installed (refer to anchor bolt templates), mount the base.  
**NOTE:** Make sure base is level on all sides.

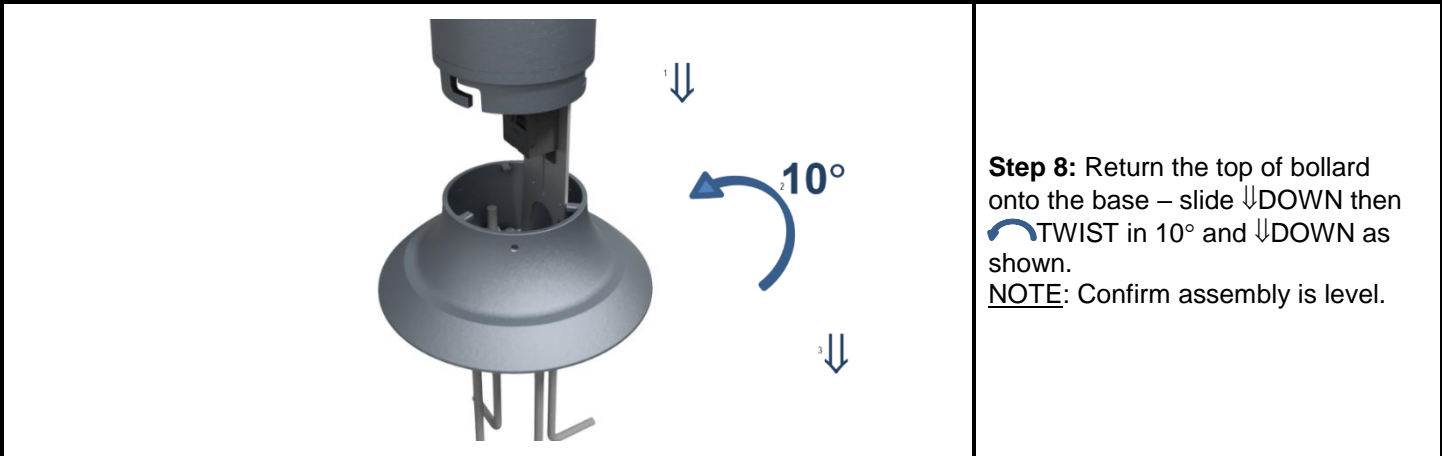


**Step 6:** Install the LED driver-bracket assembly back in to the base with existing two sets of screws and washers.

**Wiring Diagram**



**Step 7:** Connect supply wires to the driver assembly according to the wiring diagram.



**Step 8:** Return the top of bollard onto the base – slide ↓DOWN then ↻TWIST in 10° and ↓DOWN as shown.  
**NOTE:** Confirm assembly is level.



**Step 9:** Secure with three saved set screws and fully tighten.



**FINAL VIEW**

Revision History				
Rev	Description of Revision	Release Date	Manufacturing Engineer	Design Engineer
A	Initial Release	10/14/2019	Grant Burton	N.KOZYREVA