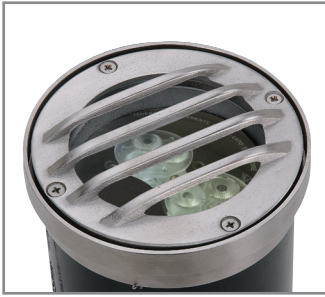




Forever Bright

SPECIFICATION FEATURES



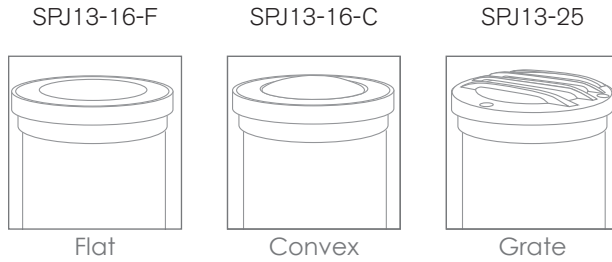
Model: **SPJ13-25 LED**
Finish: PVD Satin

- Finish:** Our naturally etched finishes will withstand the test of time. All finishes are individually treated insuring consistency. Our meticulous application results in a fixture that truly becomes "a one of a kind".
- Electrical:** Available in 12V-15V
- Labels:** ETL Standard Wet Label
C-ETL

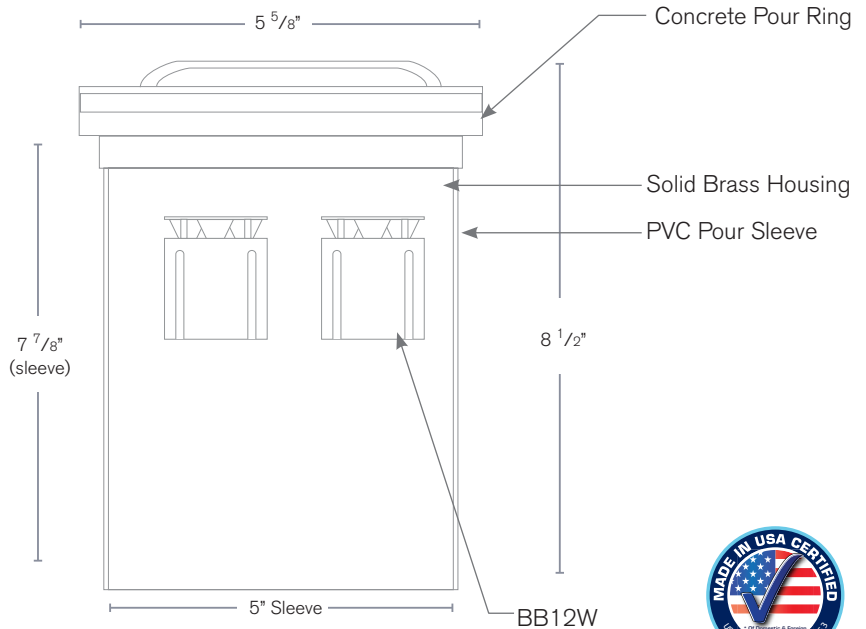
Well Light

DESCRIPTION

- Model#:** SPJ13-25 LED
- Material:** Solid Brass
- Color Temp:** 2700K
- Optic:** Spot, Flood, Wide Flood, Wide Angle Flood
- Engines:** BB12W
- Electrical:** 12-15V, 120V
- Standard:** ABS pour sleeve incl.
- LED:** Nichia



Concrete Pour Sleeve
Model: SPJ13-16-PS
Optional: Solid Brass



Wet Listed



ORDERING INFORMATION

Model#	Finishes	Wattage	Optics	Lumens	Color Temp.	Electrical
SPJ13-25 LED	PVDS	12W	FLOOD	600	2700K	12-15V

- | | | | | | | |
|--------------------|---------------------|-----|------------------|-----|-------|---------|
| V = Verde | GM = Gun Metal | 12W | Spot | 600 | 2700K | 12V-15V |
| M = Moss | B = Black | | Flood | | 4000K | 120V |
| AG = Aged Brass | R = Rusty | | Wide Flood | | 5000K | |
| MBR = Matte Bronze | PVDP = PVD Polished | | Wide Angle Flood | | | |
| SB = Satin Brass | PVDS = PVD Satin | | | | | |