



SOURCE[®]
LIGHTING BY CAST



LANDSCAPE LIGHTING 2022



We believe in providing our customers with a broad range of lighting design tools, options, and solutions.

Source Lighting® brings you professional grade landscape lighting made of durable brass. Offering both integrated and drop-in LED technology and backed by CAST, the world's most durable outdoor lighting.

DIRECTIONAL SPOT LIGHTS

Use these directional lights for uplighting plant material, trees, structures, and other architectural features. Our directional light options have a beautiful brass finish and can achieve multiple lighting functions with many lumen and beam spread capabilities.

Bluetooth LED RGBW Adjustable Color Spot Light (SBLBTC1)

INTEGRATED



Description:

- Three times brighter color than comparable MR-16 products
- Fixed 36° beam angle
- High impact glass lens
- Integrated LED lamp
- IP65 rated for harsh environments
- Set-N-Stake® Quick Link Composite with brass insert stake mount
- Operating range -30° to +45° C
- Dimmable from 5% to 100% all color options
- CCT range tunable from 2500K (@76.8CRI) to 6500K (@83.2CRI)
- RGB Options: Unlimited color wheel options
- Preset Colors: red, green, blue, and white
- Moisture relief valves

Unit REQUIRES the use of Range Extender (SBLBTR) below.

BLUETOOTH RGBW SPOTLIGHT Electrical and Photometric Test Results							
Fixture SBLBTC1	Color Setup in App	Flux	Beam Angle	Voltage	Current	Power	VA
*Testing done at full power		[Lumens]	[°]	[VAC]	[A]	[W]	
Source Lighting SBLBTC1 Spotlight	2700°	342	36°	12.0	1.7	10.300	14.07
Source Lighting SBLBTC1 Spotlight	Green	249	36°	12.0	1.2	10.700	14.75
Source Lighting SBLBTC1 Spotlight	Red	133	36°	12.0	1.1	9.260	12.86
Source Lighting SBLBTC1 Spotlight	Blue	47	36°	12.0	1.2	10.300	14.07
Source Lighting SBLBTC1 Spotlight	Indigo	92	36°	12.0	1.1	9.670	13.28

Bluetooth Range Extender (SBLBTR)

Description:

- Increases operating range & effectiveness of bluetooth/smartphone communication
- Place 1-10 feet from farthest fixtures
- Use multiple range extenders spaced 20 feet apart for full coverage

Unit REQUIRED for the use of our Bluetooth Adjustable Color Spot Light (SBLBTC1) above.



DIRECTIONAL SPOT LIGHTS



SBLABL2 GEN 2 Adjustable Beam/Lumen Spot Light

Models: SBLABL2, SBLABL23K, SBLABL2-AB, SBLABL2-AB3K
2800°K and 3000°K Color Temperature Models

NOW AVAILABLE IN BLACK!

INTEGRATED



Description:

- Available in 2800°K AND 3000°K Color Temperature Models
- Made in brass with rubbed bronze finish and aluminum with black finish
- Adjustable beam and lumen
- Powered by second generation Cree CXA series integrated LED
- Field adjustable wattage & lumen level provides endless beam spread and brightness design possibilities
- Set-N-Stake® Quick Link Composite with brass insert stake mount
- Bayonet shroud adjustment provides five different settings
- High impact glass lens
- IP65 rated for harsh environments
- 10 year warranty
- Moisture relief valves ensure no condensation accumulates inside fixture

SBLABL2 FIXTURE Electrical & Photometric Test Results for Models: SBLABL2, SBLABL23K, SBLABL2-AB, SBLABL2-AB3K (2800°K AND 3000°K Color Temperature Models)
Voltage Range 12V - 15V AC/DC, Testing Performed LM79 Standard, Actual Field Performance May Vary By +/-5%

SETTING #	POWER SETTING	VOLTAGE INPUT	CURRENT INPUT	CONSUMED WATTAGE	POWER FACTOR	VOLT / AMP	LIGHTOUTPUT @ 20° / 40° / 60° BEAM ANGLES	CCT	CRI
5	#16 WATTS	12V AC/DC	1.7 A	16.73	0.8	20.3	1000LM	2800° OR 3000°	>80
4	#13 WATTS	12V AC/DC	1.4 A	13.43	0.8	16.7	850LM	2800° OR 3000°	>80
3	#9 WATTS	12V AC/DC	1.03 A	9.9	0.8	12.3	650LM	2800° OR 3000°	>80
2	#6 WATTS	12V AC/DC	.70 A	6.68	0.8	8.25	450LM	2800° OR 3000°	>80
1	#3 WATTS	12V AC/DC	.38 A	3.65	0.8	4.5	250LM	2800° OR 3000°	>80

4 Easy-to-Change Lumen Settings! Change Optics Right on the Job!

Multi Lumen SBML Series Spot Light with Field Replaceable Optics

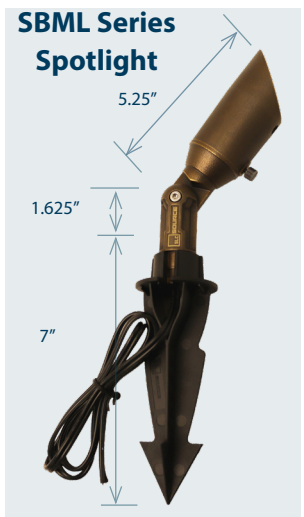
Description:

- Brass fixture
- Aged brass finish with adjustable knuckle
- Light engine features four field adjustable lumen levels (80Lm, 130Lm, 190Lm, and 250Lm)
- Field changeable optics (15°, 24°, 36°, 60°, or 80°)
- 5' #18-2 lead wire
- Includes composite Set-N-Stake
- 4.2 Watt, 12-15 Volts
- 10 year warranty

Models Available:

- **SBML15:** 15° Narrow Beam
- **SBML24:** 24° Medium Beam
- **SBML36:** 36° Wide Beam
- **SBML363K:** 36° Wide Beam, 3000K
- **SBML60:** 60° X-Wide Beam
- **SBMLW:** 80° Wash Light

***Replacement Optics and Replacement Tool (SBMLTOOL) Sold Separately, See Page 3**
(One Replacement Tool provided in each case of 6 fixtures purchased free.)



Source SBML Series: Multi Lumen Spotlight with Field Changeable Optics												
Voltage Range 12V - 15V AC/DC Actual Results May Vary + or - 5%						LIGHT OUTPUT LUMENS / BEAM SPREAD						
Finished Good Model #						SBML15	SBML24	SBML36 & SBML363K	SBML60	SBMLW		
Halogen Equivalent	Power Setting	Voltage Input	Current /Amps Input	Consumed Wattage	VA	15°	24°	36°	60°	80° WASH	CCT	CRI
35W	#4, 4.2W	12.0 VAC	0.452 A	3.02	3.85	260 Lm	255 Lm	250 Lm	215 Lm	210 Lm	2800°K	85
30W	#3, 3.0W	12.0 VAC	0.329 A	2.25	2.93	200 Lm	195 Lm	190 Lm	163 Lm	160 Lm	2800°K	85
20W	#2, 2.0W	12.0 VAC	0.216 A	1.5	2.00	138 Lm	135 Lm	130 Lm	130 Lm	128 Lm	2800°K	85
10W	#1, 1.0W	12.0 VAC	0.120 A	0.77	1.07	86 Lm	85 Lm	80 Lm	70 Lm	68 Lm	2800°K	85



Easy to Adjust Lumen Dial

DIRECTIONAL SPOT LIGHTS



SOURCE
LIGHTING BY CAST

Easy-to-Change Optics!

Replacement Optics and Tool for SBML Series Multi Lumen Spotlight (fixture on pg. 2)



SBMLTOOL

Replacement Optic Part Number:

- **SML015:** 15° Narrow Beam
- **SML024:** 24° Medium Beam
- **SML036:** 36° Wide Beam
- **SML060:** 60° X-Wide Beam
- **SML0W:** 80° Wash Light

Optic Replacement Tool (SBMLTOOL) Sold Separately:

- Easily replace optics right on the job
- One tool is included **FREE** with each case of 6 fixtures purchased
- Also requires 5/16 allen key OR 9/16 socket OR 14mm socket for lock ring removal

Gutter Mount Bracket



SMGB1

Gutter Mount Bracket (SMGB1):

- Allows sturdy installation of uplights in gutters
- Works with all CAST products (Landscape & Source)
- Stainless steel with bronze finish
- 1/2" NPT thread
- Quick release
- Mounting screws not included
- For Set-N-Stake® mount use XCBPTLTA adaptor (sold separately)

MR-16 Spot Light (SBL20)

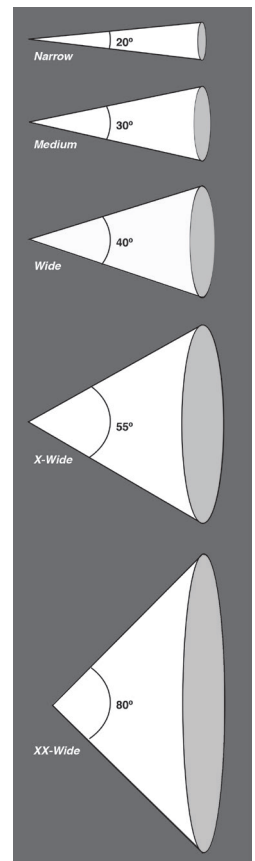
Description:

- Brass fixture
- Aged brass finish with adjustable knuckle assembly
- 2 inch shroud, MR-16 ceramic socket with lamp clip
- Molded borosilicate convex lens
- 25 foot lead wire #16 AWG brown with 18 inch daisy chain whip
- Brown plastic ground stake included
- Do not exceed 90 watts, 7.5 amps on #16 gauge wire
- Fixture housing lifetime warranty
- MR-16 lamp sold separately, see page 9



SBL20

Achieve These Beam Spreads in the SBL20 by Using Source Lighting LED MR-16 Lamps!



***COLOR CODED MR-16 Lamps Sold Separately See Page 9**



DIRECTIONAL SPOT LIGHTS



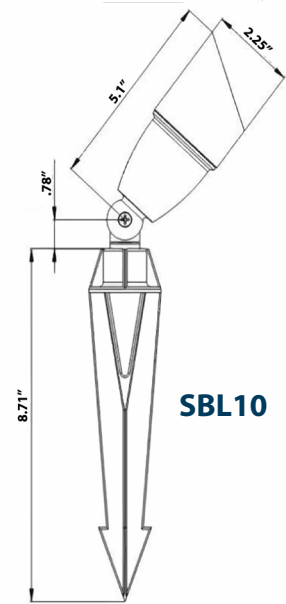
SOURCE
LIGHTING BY CAST

MR-16 Economy Spot Light (SBL10)

Description:

- Brass fixture
- Aged brass finish with adjustable knuckle assembly
- 2 inch shroud, with clear glass lens
- MR-16 socket with lamp clip (lamp not included)
- 3 ft lead wire
- Brown plastic stake included
- Lifetime warranty on fixture housing

***COLOR
CODED
MR-16
Lamps Sold
Separately
See Page 9**



SBL10

Integrated LED Spot Lights

4.5 Watt (SSPK45)

INTEGRATED

Description:

- 4.5 Watt, 6.0 VA, 12-15V, 35° beam
- 450 Lumen
- Integrated 3 LED Nichia Chip
- 3000K Clear glass lens,
- 35° beam angle
- Custom PMMA optic
- IP66 rated
- 5 year warranty on electronics



SSPK45



8.5 Watt (SSPK85)

INTEGRATED

Description:

- 8.5 Watt, 11 VA, 12-15V, 35° beam
- 850 Lumen
- Integrated 9 LED Nichia Chip
- 3000K Clear glass lens,
- 35° beam angle
- Custom PMMA optic
- IP66 rated
- 5 year warranty on electronics



SSPK85





Use these Path/Area Lights for lighting pathways, planting beds, and other areas. These lights have both frosted and clear lenses included. All hats, stem assemblies and lamps are sold separately.

Path/Area Hats



Description (SAL100):

- Brass fixture
- Aged brass finish
- Frosted & clear polycarbonate lenses included with rubber gaskets
- Stem assemblies sold separately
- Fixture housing lifetime warranty
- Lamp #SLBP250L sold separately (see pg. 10)



Description (SAL150):

- Brass fixture
- Aged brass finish
- Frosted & clear polycarbonate lenses included with rubber gaskets
- Stem assemblies sold separately
- Fixture housing lifetime warranty
- Lamp #SLBP250L sold separately (see pg. 10)

Stem Assemblies



Description (SALSTEM12, SALSTEM18):

- Brass fixture/aged brass finish
- Ceramic bi-pin socket GY 6.35
- 25 ft. lead wire #16 AWG brown with 18in daisy chain whip
- Brown plastic ground stake included
- Lamp #SLBP250L sold separately (see pg. 10)
- Area light hats sold separately
- Lifetime warranty on fixture housing

"L" Top Path Light



Description:

- Body is solid brass
- 21" X 5.5" (1" Square)
- Ceramic bi-pin socket GY 6.35
- 5 ft. lead wire #18 AWG brown
- Brown plastic ground stake included
- Lamp #SLBP250L sold separately (see pg. 10)
- Lifetime warranty on fixture housing



WELL/RECESSED/GROUND



SOURCE
LIGHTING BY CAST

In-Ground Well Light



SGL20

Description (SGL20):

- Solid brass body
- Aged brass finish
- Shroud with clear convex glass lens
- Lead wire 5' 18AWG
- MR-16 bi-pin porcelain socket (lamp not included)
- Recommended lamp: Source Lighting MR-16 lamp
- Fixture housing lifetime warranty



***MR-16 Lamp
Sold Separately
See Page 9 for
options**

Recessed Up Light (8 Watt)



SRUL8

Description (SRUL8):

- 5.5" top OD, Height 5", 8W, 10.6 VA, 12-15V, 35° with tilt angle adjustment
- Integrated CREE COB LED 3000K, clear glass lens
- 35° reflector, 15° tilt angle
- Die cast aluminum body & aluminum sleeve
- Trim brushed 316 stainless steel
- Provided with 5' #18-2 pigtail, IP67 rated, 5 year warranty

INTEGRATED

Recessed Mini Narrow Spot Up Light (1 Watt)



SRULNS

Description (SRULNS):

- 1-7/8" Top Flange Diameter, Body 1.32" OD, Overall length 2.7"
- 1W, 1.45 VA, 12-15V, 10° **narrow spot** with black mounting polycarbonate sleeve
- Integrated 1 LED Nichia Chip, 3000K, clear glass lens
- Fixture 304, trim 316 stainless steel, polished matt top surface finish
- Provided with 36" #18-2 lead wire, IP67 rated, 5 year warranty

INTEGRATED

Recessed Mini Wash Up Light (.5 Watt)



SRULW

Description (SRULW):

- 1-7/8" Top Flange Diameter, Body 1.32" OD, Overall length 2.7"
- .5W, .7 VA, 12-15V, **wash light** with black mounting polycarbonate sleeve
- Integrated 1 LED Nichia Chip, 3000K, frosted glass lens
- Fixture 304, trim 316 stainless steel, polished matt top surface finish
- Provided with 36" #18-2 lead wire, IP67 rated, 5 year warranty

INTEGRATED

Recessed Mini Wall Two Sided Wash Light (3 Watt)



SRDWL

Description (SRDWL):

- 4.4" OD top flange diameter, body 1.70" OD, overall length 2.6"
- 3W, 3.89 VA, 12-15V, **two sided wash light**
- Integrated 1 LED Nichia Chip, 3000K, frosted lens
- Fixture 304, trim 316 stainless steel, polished matt top surface finish
- Provided with 36" #18-2 lead wire
- IP67 rated, 5 year warranty

INTEGRATED

WALL, DECK, & WASH



Engineered Wall Lights

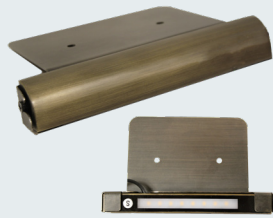


Use these Engineered Wall Lights for lighting steps, walkways, and underneath capstones. These lights have an integrated LED Strip and easily removable light module.

ALL WALL LIGHTS ARE INTEGRATED

4 Easy-to-Change Lumen Settings!

Engineered Wall Light with Adjustable Lumen Output (SEWL60ML)



SEWL60ML

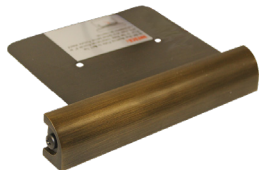
Features:

- Dimensions: 6" L x .7" W x 1" H
- 2700 CCT warm white
- FOUR LIGHT LEVELS AT 100%, 70%, 50%, 30%
- 2.5W and **80 lumen at 100%**
 - 70% power setting = 1.75W and **55 lumen**
 - 50% power setting = 1.25W and **40 lumen**
 - 30% power setting = .75W and **25 lumen**
- Rated hours: 50,000, 9-24 volt operating range
- 80 CRI
- Ambient operating temperature: -40°C to +50°C

Description:

- Aged brass finish
- Frosted lens with 8-chip LED
- Detachable body for easy repair
- 48 in. #18 AWG lead wire with quick connect
- Can be used with the Set-N-Stone® (CSIS)
- LED & housing 10 Year Warranty
- ETL approval

Rounded Edge LED (SEWL60R)



SEWL60R

Features:

- Dimensions: 6" L x .7" W x 1" H
- 8 Chip, **120 Lm** integrated LED strip
- 3W, 120° beam (wash) spread
- 2700°K warm white, 10V-24V AC/DC range
- CRI: RA>80, halogen equivalent 20W
- Rated Hours, 30,000
- Ambient operating temperature: -40°C to +50°C

Description:

- Aged brass finish
- Brass "L" mounting bracket fits Set-N-Stone® module
- Flexible bracket for up and down adjustments
- Easily removable light module
- Includes 10 ft. lead wire #16 AWG brown
- LED & housing: 10 Year Warranty

Square Edge LED (SEWL45S)



SEWL45S

Features:

- Dimensions: 4.5" L x .8" W x .65" H
- 4 Chip, **60 Lm** integrated LED strip
- 1.1W 120° beam (wash) spread
- 2700°K warm white, 10V-15V AC/DC range
- CRI: RA>80, halogen equivalent 10W
- Rated hours, 30,000
- Ambient operating temperature: -40°C to +50°C

Description

- Aged brass finish
- Stainless mounting bracket with aged brass finish
- Easily removable light module
- Includes 10 ft. lead wire #16 AWG brown
- LED & housing: 10 Year Warranty

Square Edge LED (SEWL70S)



SEWL70S

Features:

- Dimensions: 7" L x .8" W x .65 H
- 8 Chip, **120 Lm** integrated LED strip
- 3W, 120° beam (wash) spread
- 2700° warm white, 10V-15V AC/DC range
- CRI: RA>80, halogen equivalent 20W
- Rated hours, 30,000
- Ambient operating temperature: -40°C to +50°C

Description

- Aged brass finish
- Stainless mounting bracket with aged brass finish
- Easily removable light module
- Includes 10 ft. lead wire #16 AWG brown
- LED & housing: 10 Year Warranty

WALL, DECK, & WASH



Deck Light (SDL20)



SDL20

Features:

- Solid brass body, 3.5" OD
- Aged brass finish
- Frosted glass lens, G-4 bi-pin socket (lamp not included)
- Lead wire 5' 16AWG
- Recommended lamp: Source Lighting LED lamp SLBP250L (see page 10)
- Fixture housing lifetime warranty



Lamp Sold Separately, see page 10

Mini Flood Wash Light (SFL10)



SFL10

Features:

- Solid brass body
- Aged brass finish
- Standard plastic stake
- Thumbscrew for easy knuckle adjustment
- Lead wire 5' 16AWG
- Frosted lens, G-4 bi-pin socket (lamp not included)
- Recommended lamp: Source Lighting LED lamp: SLBP250L (see page 10)
- Fixture housing has lifetime warranty



Lamp Sold Separately, see page 10

Large Flood/Wash Light (SFL20)



SFL20

Features:

- Solid brass body
- Aged brass finish
- Large standard plastic stake
- Thumbscrew for easy knuckle adjustment
- Lead wire 5' 16AWG
- Frosted lens, MR-16 bi-pin socket, lamp not included (see page 9)
- Recommended lamps: MR-16 80° XX Wide Beam LED: SLMR162XXW27 or SLMR164XXW27
- Fixture housing has lifetime warranty



Lamp Sold Separately, see page 9

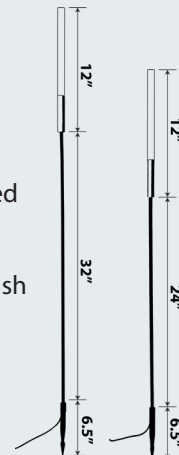
SPECIALTY LIGHTS

Bamboo Lights (SBBL36 & SBBL44)



Features:

- Available in two heights, 36" and 44"
- 11/16" diameter with 12" long illuminated frosted polycarbonate cylinder top
- Integrated 1LED Nichia Chip, anti-glare diffuser
- Aluminum stem with black polyester coated finish
- 2 watts, 2.6 VA, 12V AC/DC, beam angle 120
- 36" #18-2 lead wire, IP65 rated
- 5 year warranty



NO GLARE!

INTEGRATED

Underwater Light (SUL20)



Features:

- Solid brass body, aged brass finish
- Water tight seal
- Clear tempered glass lens
- No shroud
- Lead wire 10' 18AWG
- MR-16 bi-pin porcelain socket (lamp not included)
- Recommended lamps: MR-16 LED Lamps (see page 9)



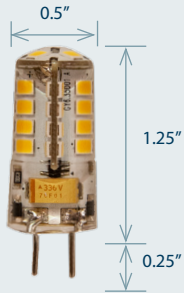
Lamp Sold Separately, see page 9

LED MR-16 LAMPS

Color-Coded & Engraved for Easy Identification



Lamp Code	Beam from Fixture		Halogen Equiv.	Lamp Body Color Code	Voltage Input	Color Temp. CCT/CRI	Amps	Power Factor	Volt Amp (to size Trans.)	Factory Lumen	Lumen Output Enclosed Fixture	Rated Hrs.
												
SLMR166XXW27	XX-Wide	80°	75 Watt	WHITE 6 Watt	10-24 VAC	2700°K/ 83 CRI	0.706	0.717	8.49	720	213	50,000
SLMR166XW27	X-Wide	55°					0.706	0.717	8.49		440	
SLMR166W27	Wide	40°					0.706	0.717	8.49		527	
SLMR166M27	Medium	30°					0.706	0.717	8.49		575	
SLMR166N27	Narrow	20°					0.706	0.717	8.49		559	
SLMR166XW30	X-Wide	55°				3000°K/ 83 CRI	0.762	0.681	9.16		534	
SLMR166W30	Wide	40°				0.745	0.677	9.0	557			
												
SLMR165XXW27	XX-Wide	80°	50 Watt	BLACK 5 Watt	10-24 VAC	2700°K/ 83 CRI	0.542	0.7	6.56	540	175	50,000
SLMR165XW27	X-Wide	55°					0.542	0.7	6.56		392	
SLMR165W27	Wide	40°					0.542	0.7	6.56		419	
SLMR165M27	Medium	30°					0.542	0.7	6.56		421	
SLMR165N27	Narrow	20°					0.542	0.7	6.56		381	
SLMR165XW30	X-Wide	55°				3000°K/ 83 CRI	0.671	0.658	7.45		426	
SLMR165W30	Wide	40°				0.608	0.658	7.34	456			
												
SLMR164XXW27	XX-Wide	80°	35 Watt	BLUE 4 Watt	10-24 VAC	2700°K/ 83 CRI	0.387	0.691	4.67	390	199	50,000
SLMR164XW27	X-Wide	55°					0.387	0.691	4.67		299	
SLMR164W27	Wide	40°					0.387	0.691	4.67		304	
SLMR164M27	Medium	30°					0.387	0.691	4.67		305	
SLMR164N27	Narrow	20°					0.387	0.691	4.67		267	
SLMR164XW30	X-Wide	55°				3000°K/ 83 CRI	0.435	0.637	6.0		310	
SLMR164W30	Wide	40°				0.435	0.65	5.26	322			
												
SLMR162XXW27	XX-Wide	80°	20 Watt	GREEN 2 Watt	10-24 VAC	2700°K/ 83 CRI	0.236	0.664	2.83	300	128	50,000
SLMR162XW27	X-Wide	55°					0.236	0.664	2.83		183	
SLMR162W27	Wide	40°					0.236	0.664	2.83		189	
SLMR162M27	Medium	30°					0.236	0.664	2.83		193	
SLMR162N27	Narrow	20°					0.236	0.664	2.83		167	
SLMR162XW30	X-Wide	55°				3000°K/ 83 CRI	0.249	0.64	3.0		197	
SLMR162W30	Wide	40°				0.23	0.66	3.0	196			
												
SLMR161XXW27	XX-Wide	80°	10 Watt	RED 1 Watt	10-24 VAC	2700°K/ 83 CRI	0.139	0.63	1.69	240	74	50,000
SLMR161XW27	X-Wide	55°					0.139	0.63	1.69		106	
SLMR161W27	Wide	40°					0.139	0.63	1.69		104	



SLBP250L

Description (SLBP250L):

- GY6.35 Bi-Pin Base LED
- 2.5 Watts, 9 - 20 Volt operating range
 - 250 Lumen, Color Temp. 2750°K
 - IP67 Rated, 25,000 Hrs.

Can be used with these Products:



- Source Path/ Area Lights
(SAL100, SAL150, SALSTEM12, SALSTEM18)
*all pieces sold separately
Source Deck Light (SDL20)
Source Mini Flood Wash Light (SFL10)



- Classic Mini China Hat
CCH5CB (with Bi-Pin Socket)
CCH5LED1 (original non-integrated)



SLSCB250L

Description (SLSCB250L):

- Single Contact Bayonet LED
- 2.5 Watts, 9 - 20 Volt operating range
 - 250 Lumen, Color Temp. 2750°K
 - IP67 Rated, 25,000 Hrs.

Can be used with these Products:

LANDSCAPE



- Classic Mini China Hat
CCH5CB (with SCB Socket)
CCH5LED1 (original non-integrated)



SL3156250L

Description (SL3156250L):

- 3156 S8 Wedge Base LED
- 2.5 Watts, 9 - 20 Volt operating range
 - 250 Lumen, Color Temp. 2750°K
 - IP67 Rated, 25,000 Hrs.

Can be used with these Products:

LANDSCAPE



- Classic Path Lights
CCH13CB, CCH1CB, CCH2CB, CMU13CB, CMU1CB, CMU2CB, CNO13CB, CNO1CB, CSA1CB
Manufactured After July 2007



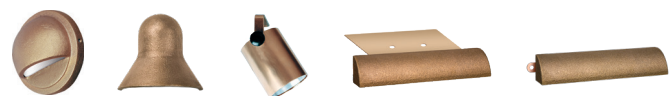
SL921T5200L

Description (SL921T5200L):

- 921 T5 Wedge Base LED
- 2.5 Watts, 9 - 15 Volt operating range
 - 200 Lumen, Color Temp. 2750°K
 - IP67 Rated, 25,000 Hrs.

Can be used with these Products:

LANDSCAPE



- Classic Deck, Niche, & Engineered Wall Lights
CDL1CB, CDL2CB, CNL1CB, CEWL5CB, & CEWL6CB



SOURCE[®]
LIGHTING BY CAST

Expanding Your Lighting Solutions



www.cast-lighting.com/source

Phone: 973.423.2303 – Toll Free: 800.914.CAST – Email: info@cast-lighting.com

Copyright 2022, CAST Lighting, Hawthorne, NJ 07506. Patents Pending.

All rights reserved. Images and text may not be reproduced in any form without the written permission of CAST Lighting, LLC
Cover photo courtesy of Mike Cresci, Full Moon Lightscaping, Maramora, NJ, @fullmoonlightscaping | www.fullmoonlightscaping.com
Back cover photo courtesy of Andy Mulder, Mulder Maintenance and Services, Crown Point, IN, @mulderoutdoors | www.mmsnwi.com
SLB-3.2022