

# INFLUENCER

**THE  
SPIN  
STYLE  
AGENCY**



Prop Styling and Set Design by Darcie Adler, Photography by Jeff Von Hoene for Patcraft



Prop Styling and Set Design by Paula Cuevas, Photography by Shelby Gordon, Musical Duo St Beauty

“THAT’S JUST OUR SPIN ON THINGS”

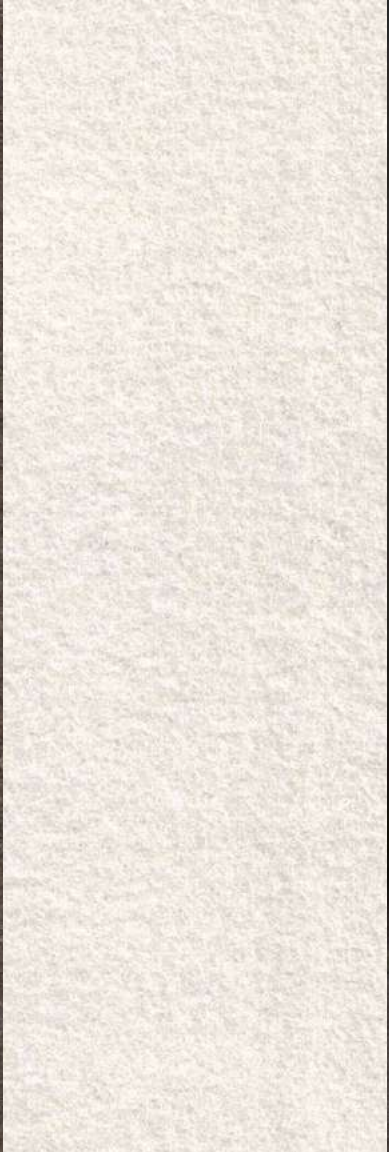
“Since its inception, The Spin Style Agency has cultivated a passionate cooperative of talented stylists, artists, creative directors, and image-makers fiercely devoted to a singular mission: delivering uncommon results. A multifaceted agency, we celebrate discerning design standards, thoughtful customizations, and a spirit of collaboration, helping forge immediate connections and enduring bonds with the country’s top-caliber clientele”. A collaboration of set design and prop styling by The Spin Style Agency with photography by Guy Welch Production, the combination results in their inspiration for Shaper Sense Drum color groups using FilzFelt 100% Wool Design Felt.

MEDIUM: Materials, Every Day Objects, Felt

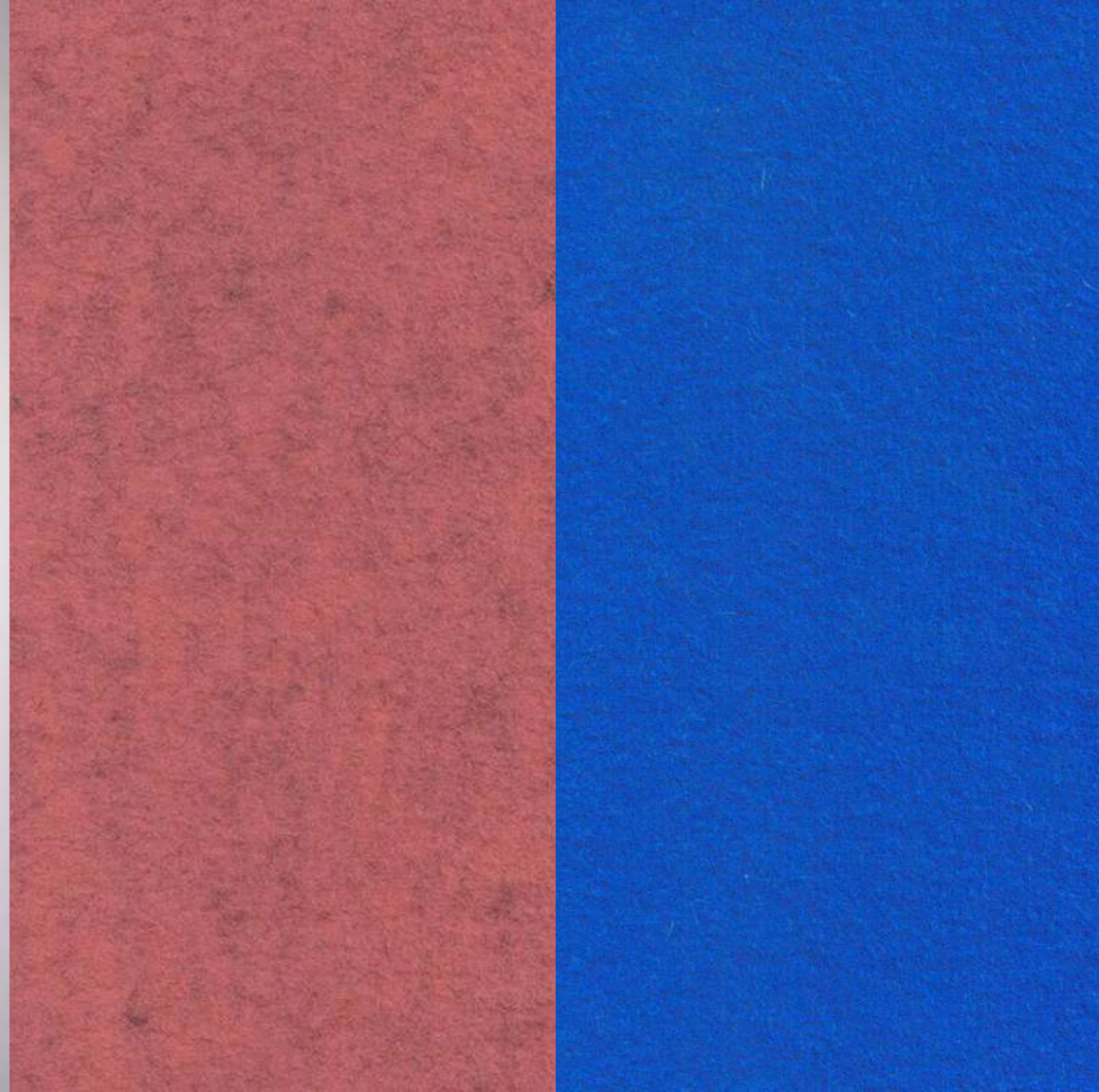
THE  
**THE  
SPIN  
STYLE**  
AGENCY

COLLECTION

INSPIRATION FOR SHAPER SENSE DRUM







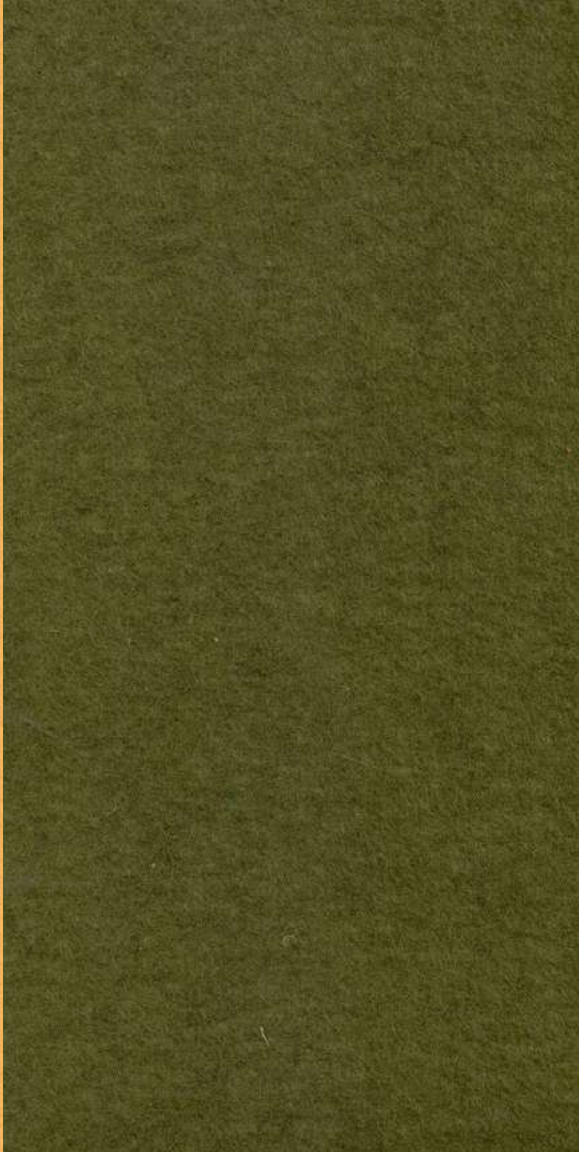








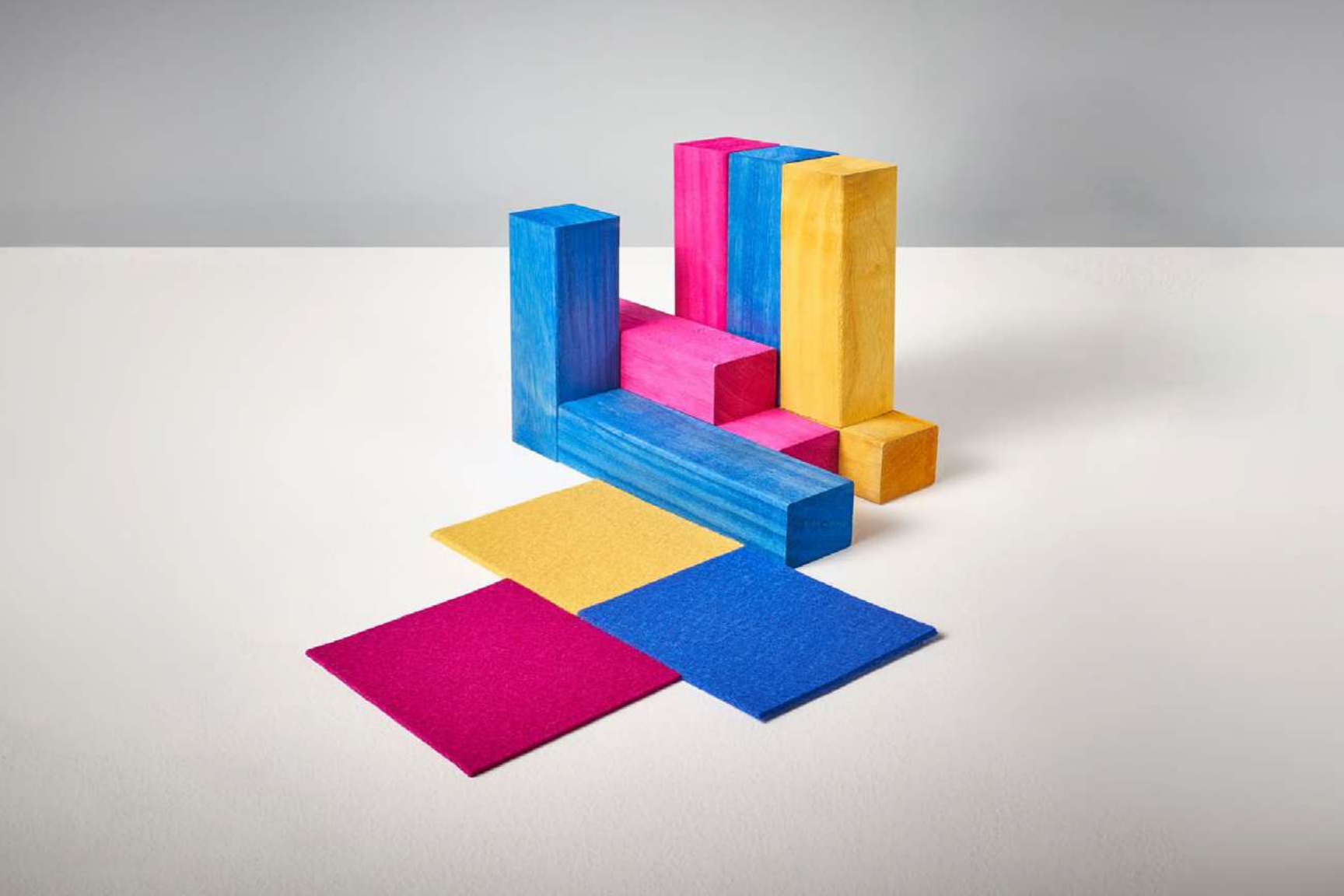




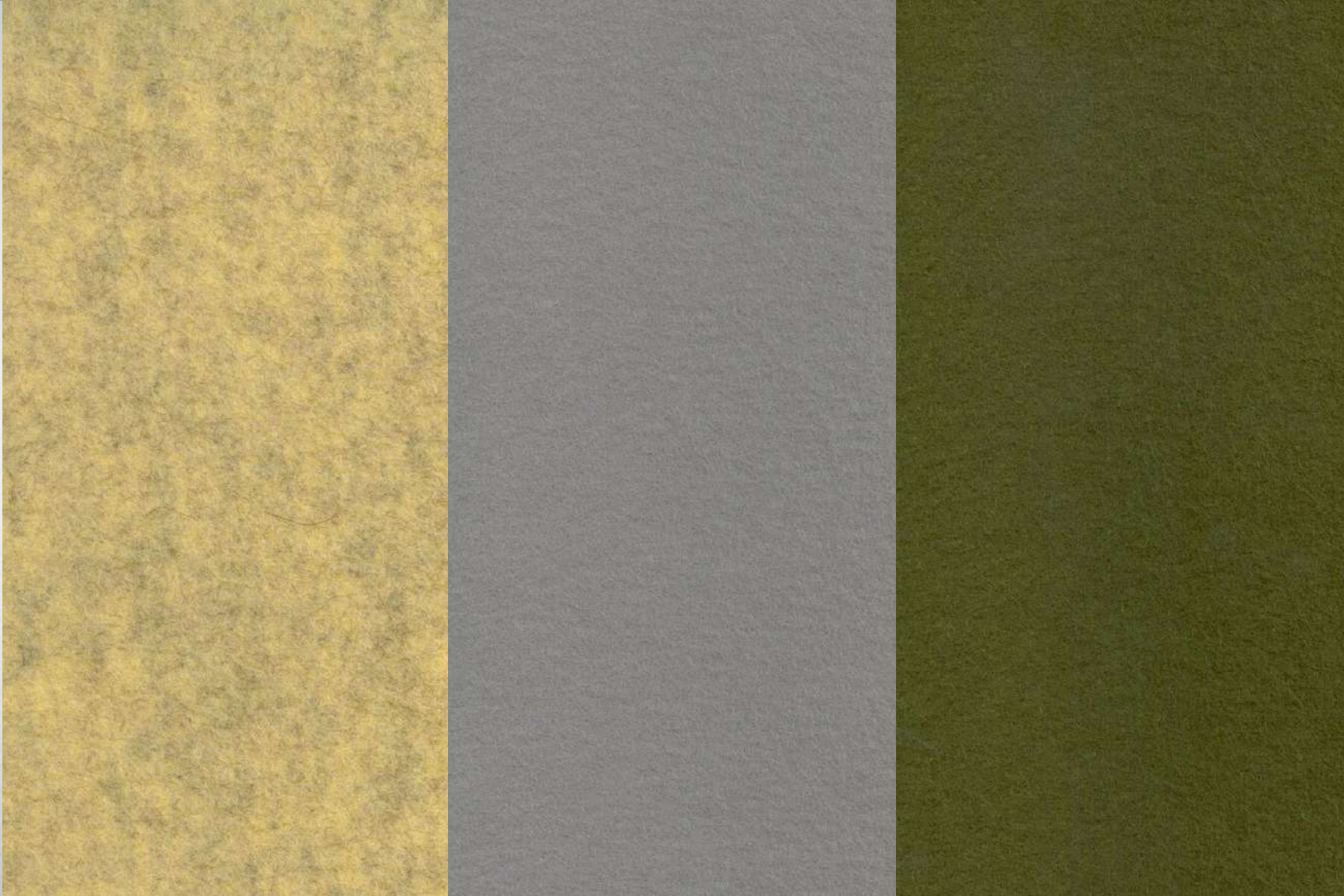




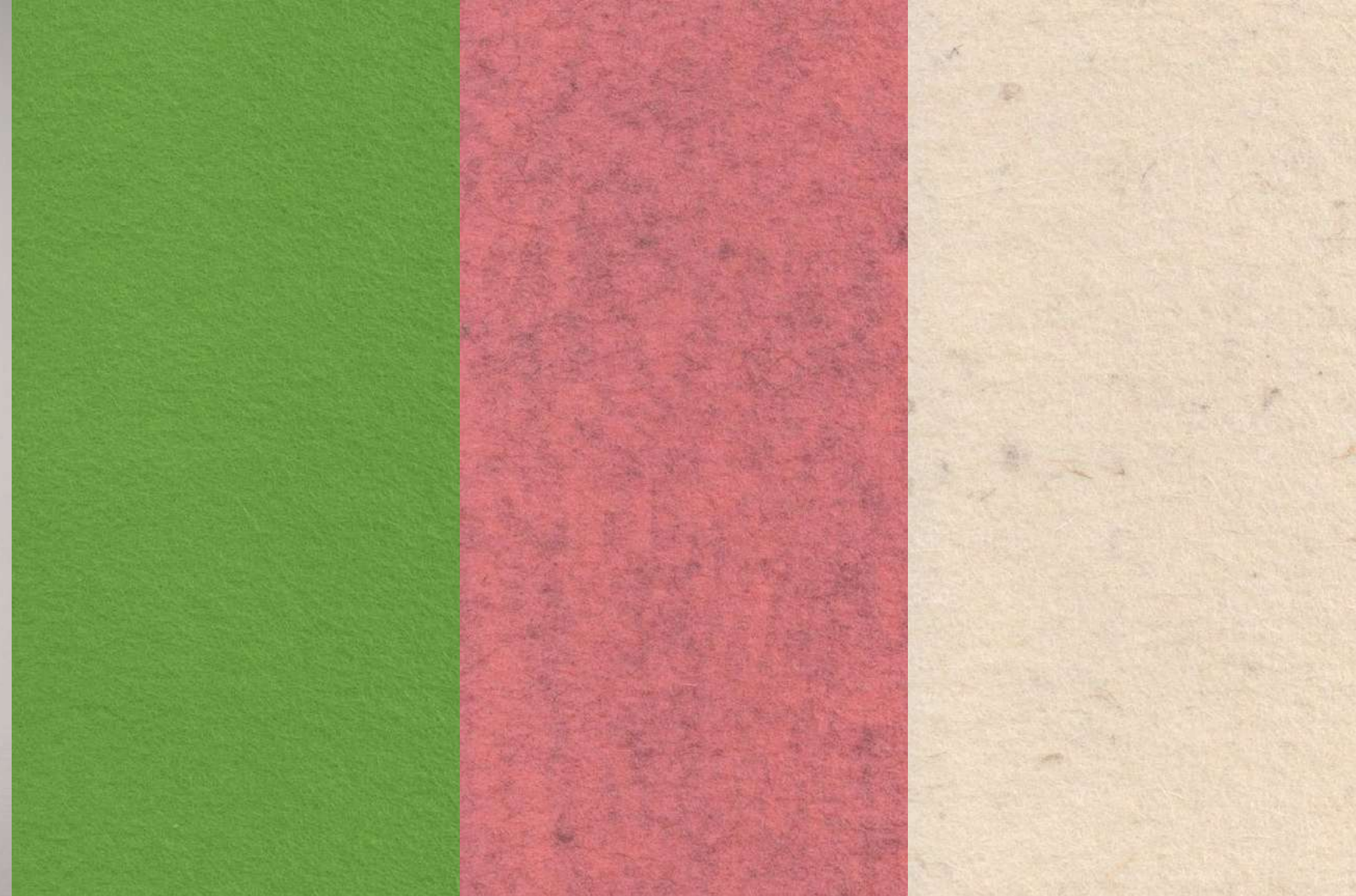




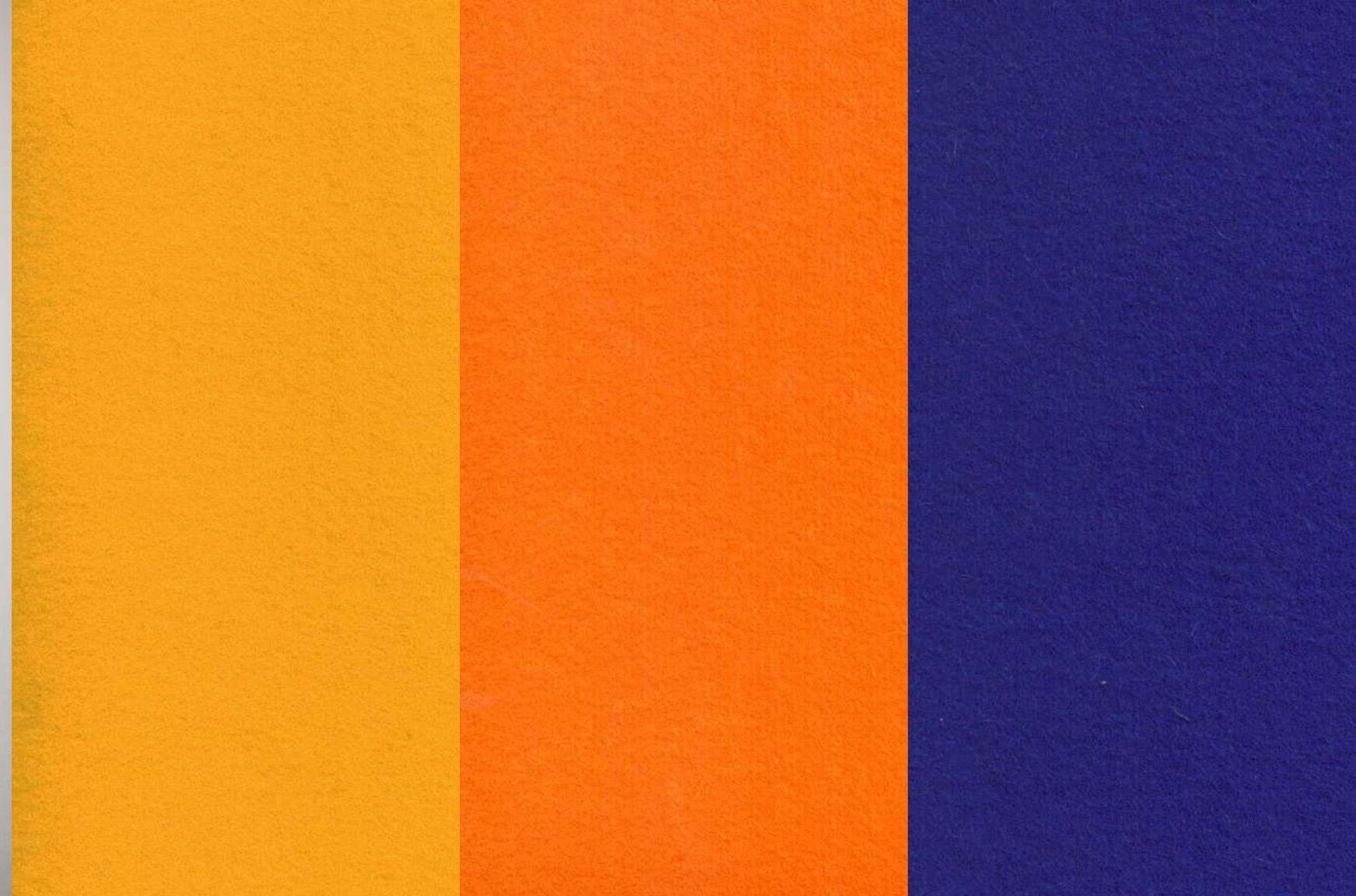




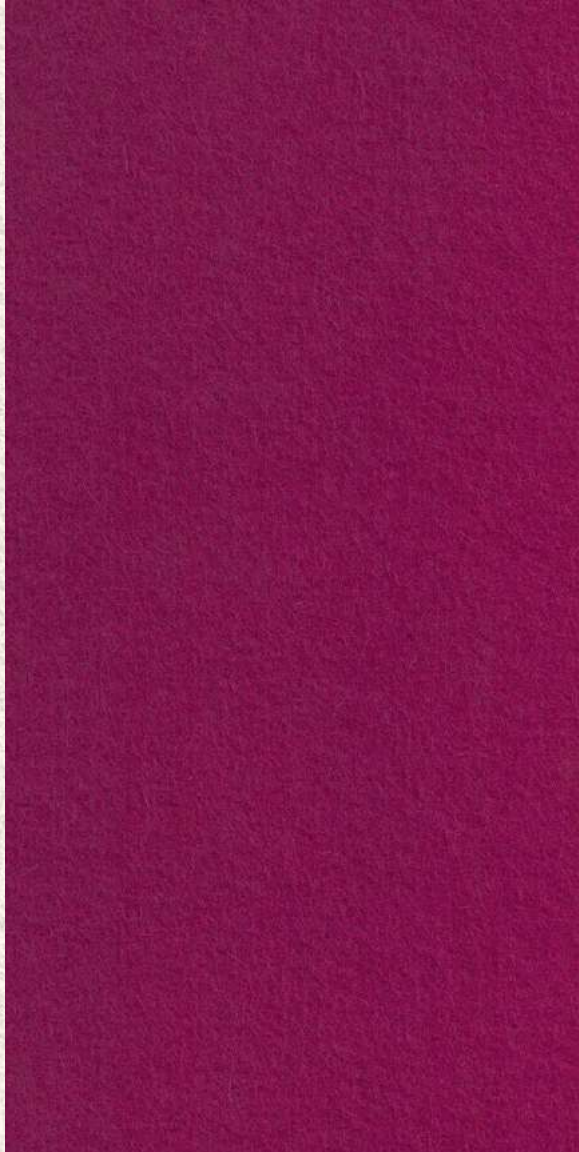
























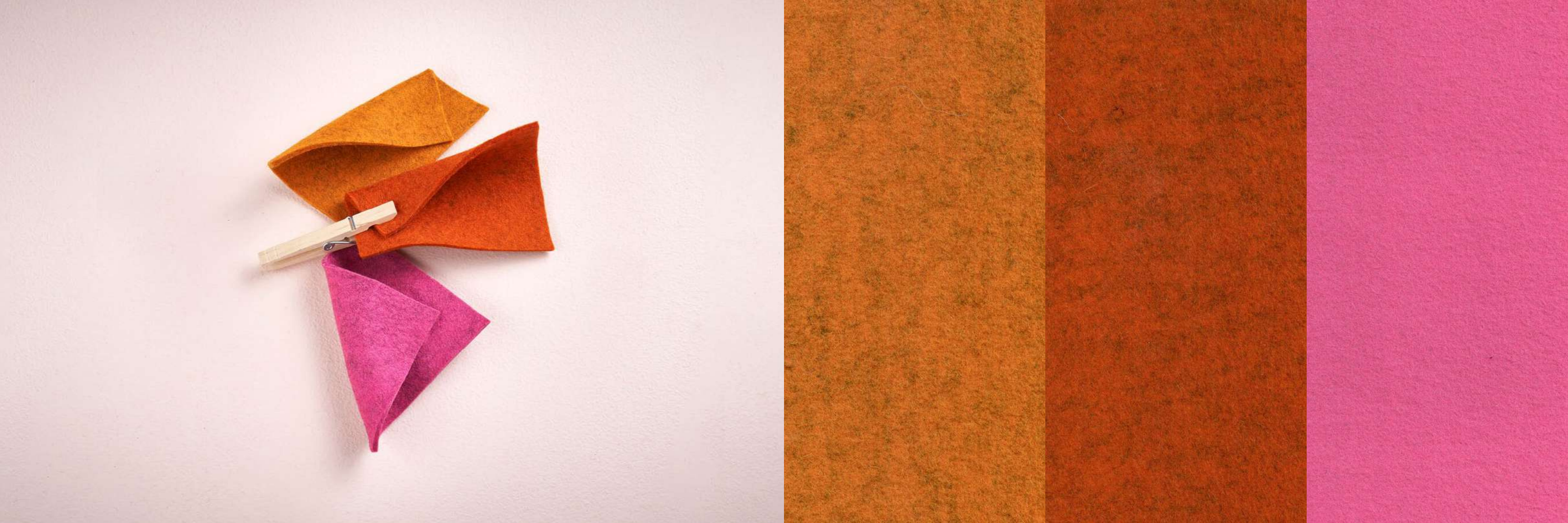




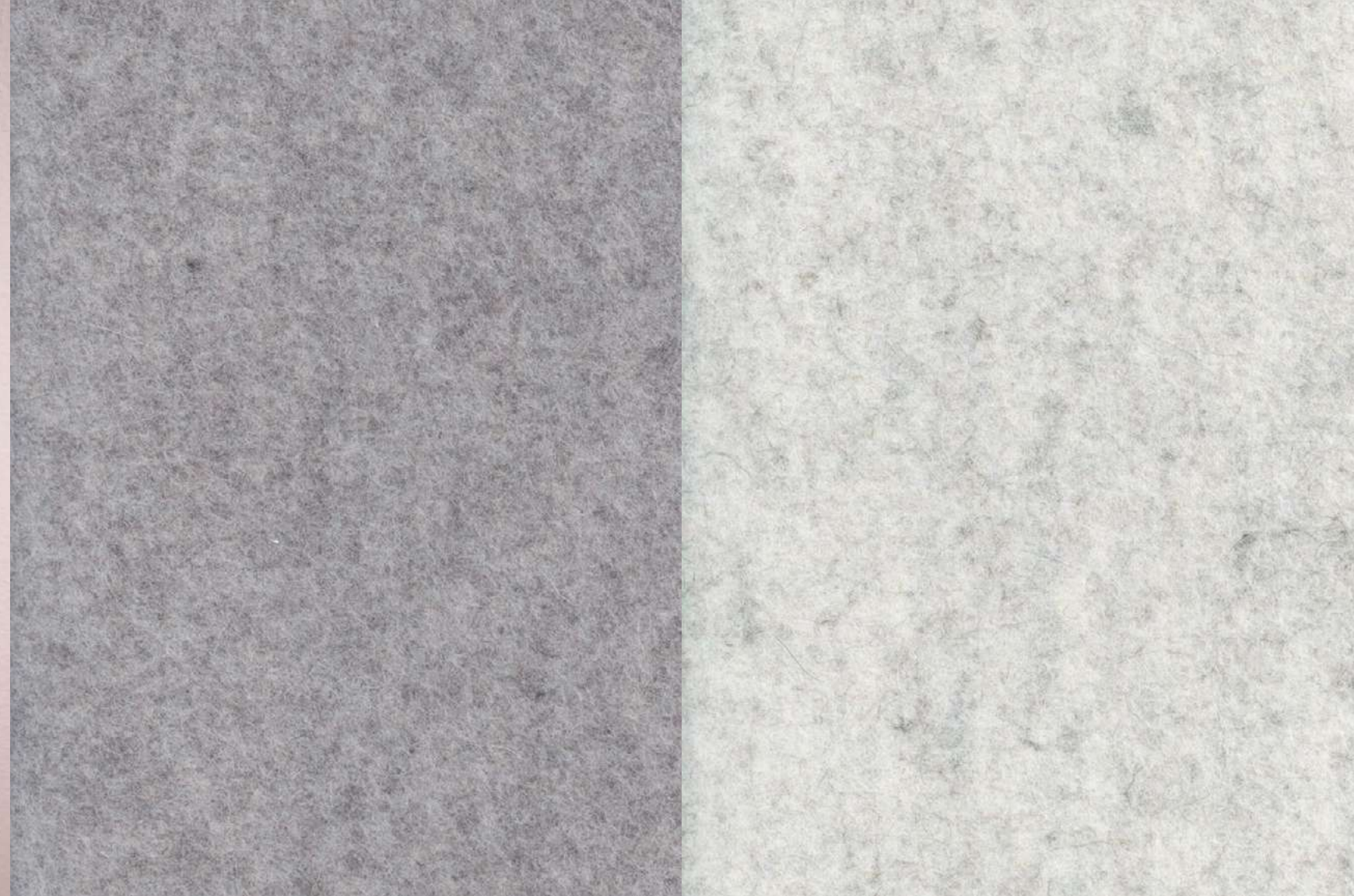








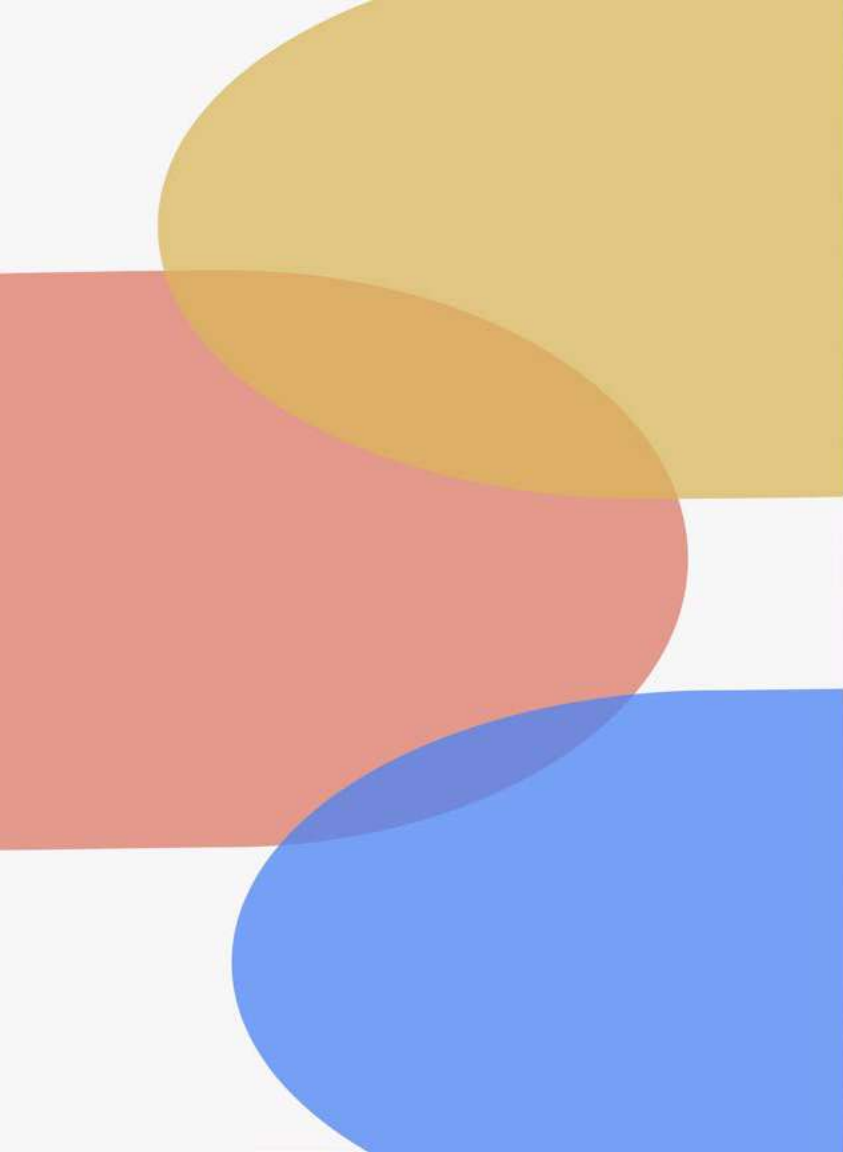








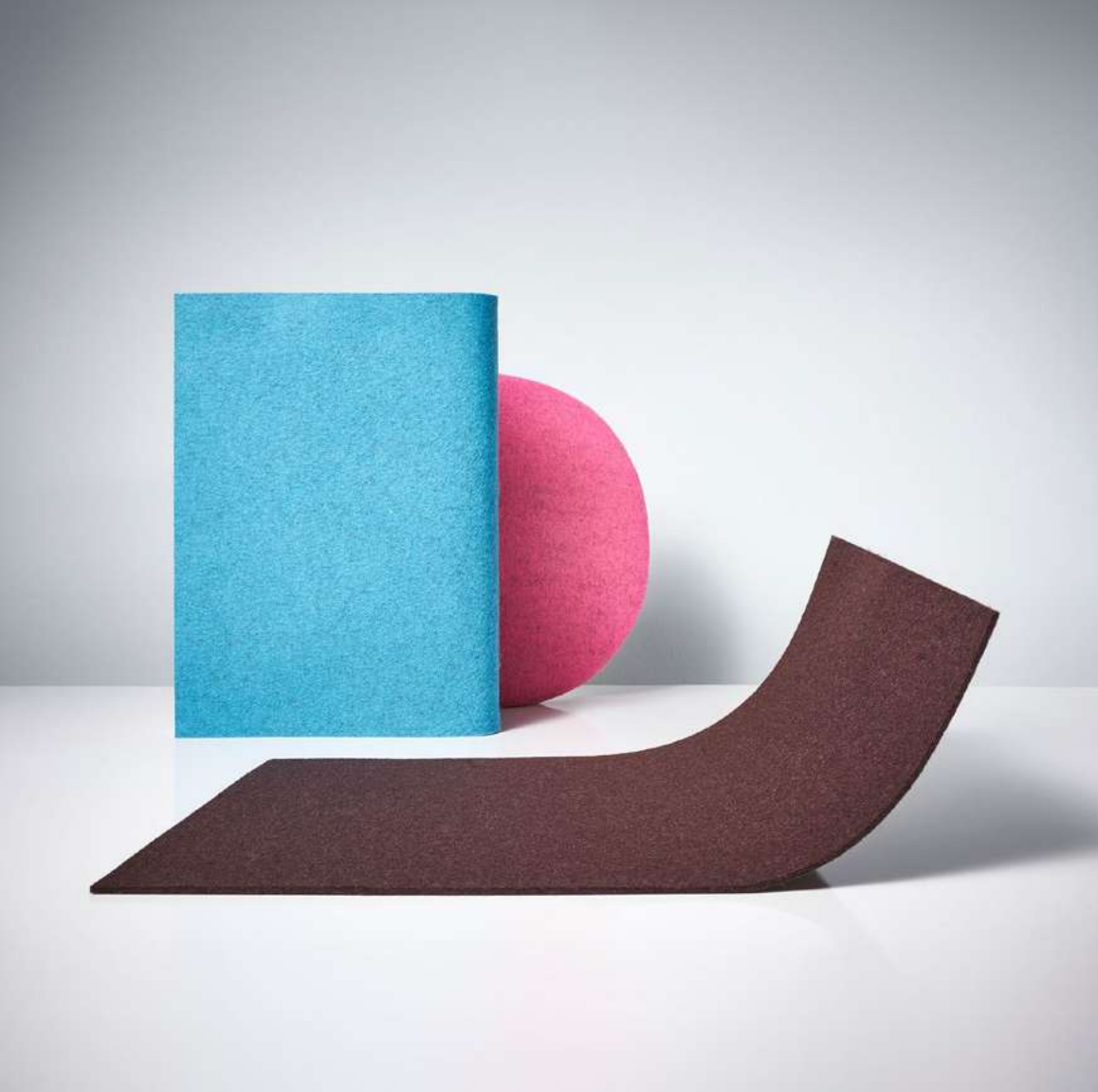








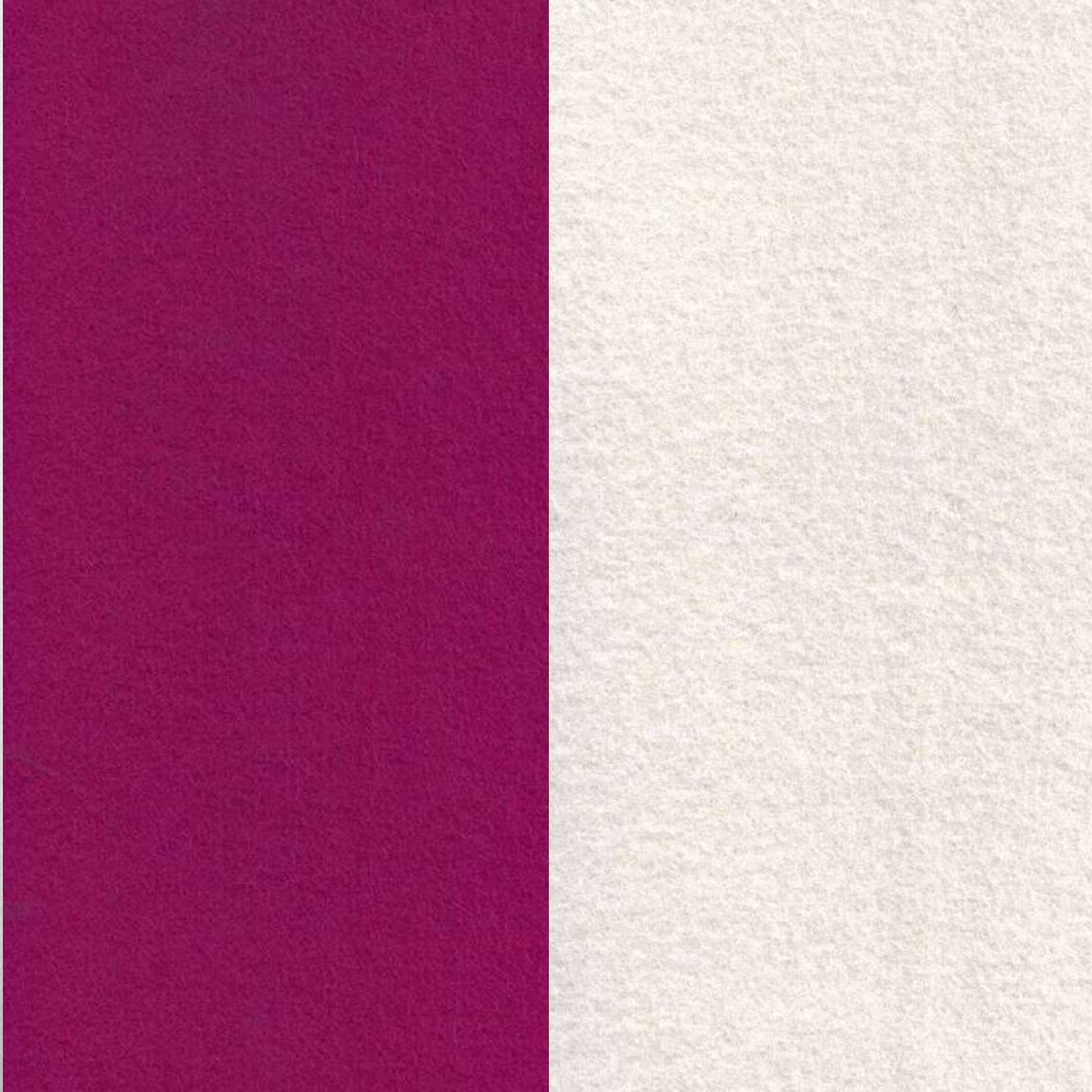
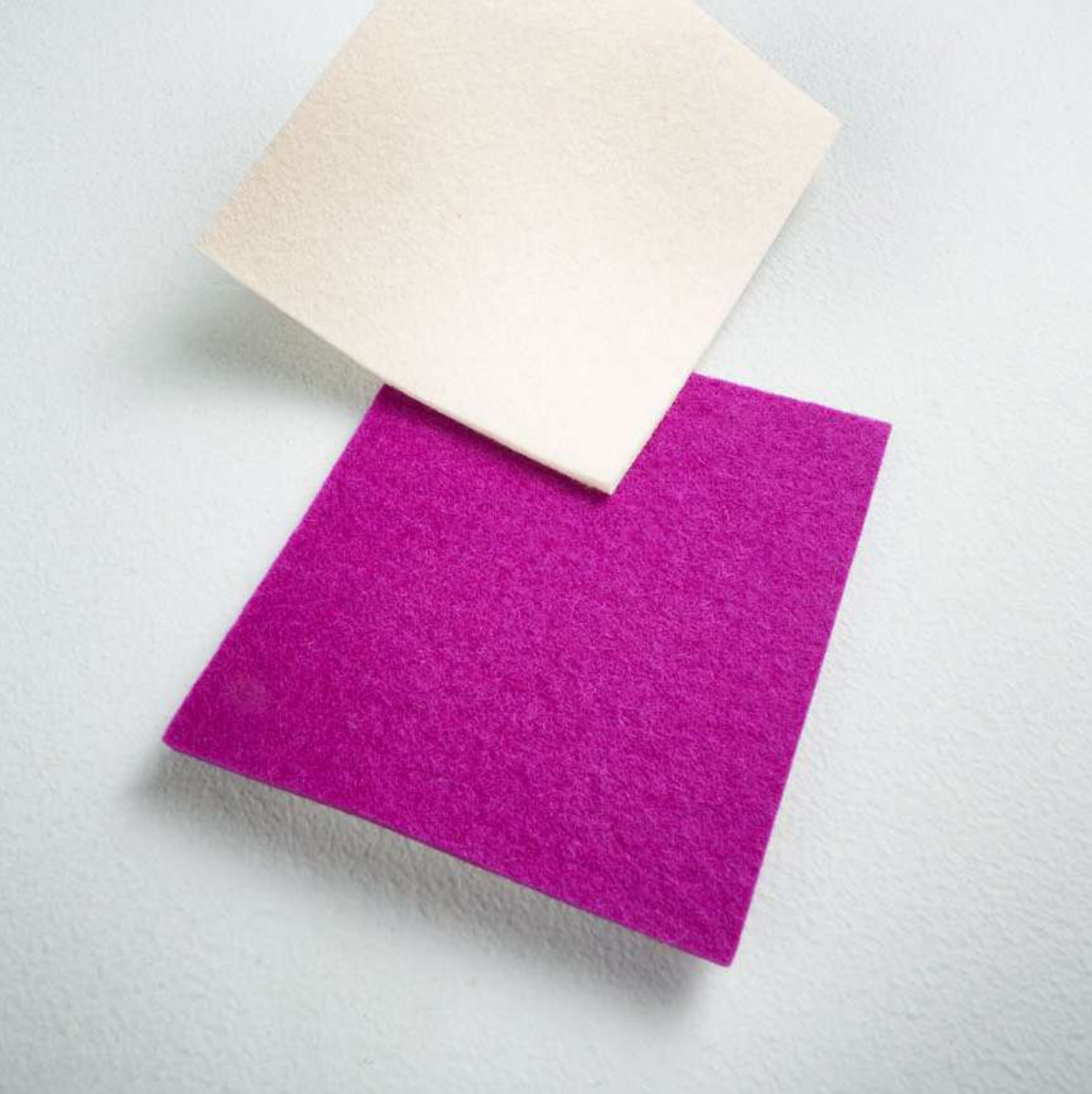




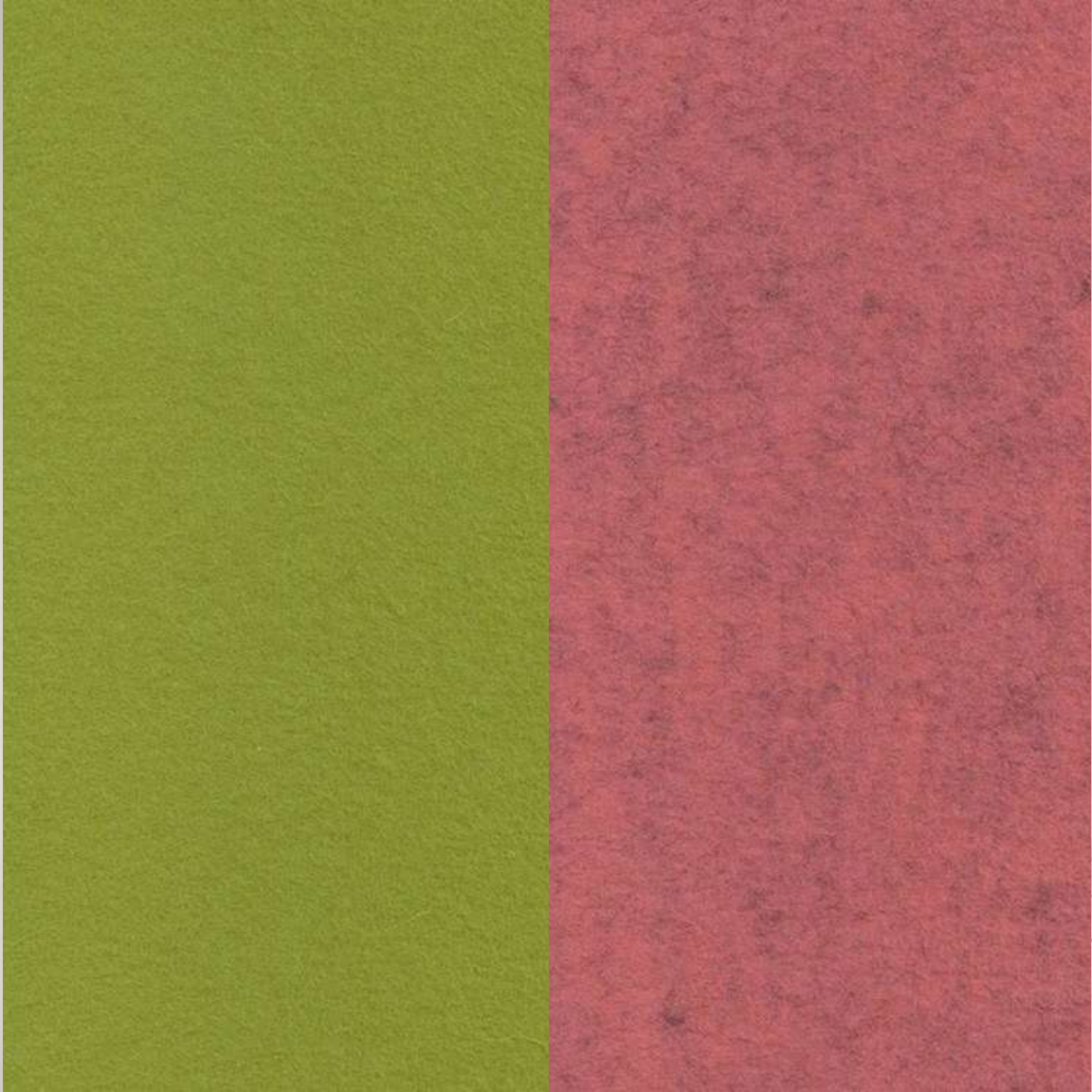














# THE SPIN STYLE AGENCY



## ARTIST STATEMENT

"I HAVE ALWAYS ENJOYED THE WAY OBJECTS RELATE TO EACH OTHER, INTERACTING WITH LIGHT, COLOR, FORM, AND COMPOSITION, WHEN THEY SPEAK TO EACH OTHER, THEY SPEAK TO ME."

- Darcie Adler

## ABOUT

Darcie Adler is an art director, stylist, owner and creative director of The Spin Style Agency. Her time is split between supporting the artists she represents and meeting client's creative needs. A problem solver and creative explorer, Darcie thrives collaborating with her team and growing her business with passion.

The Spin Style is an agency representing a stellar roster of art directors, wardrobe stylists, prop stylists and hair and makeup artists. We are based in Atlanta, but working globally. See our work: [www.thespinstyle.com](http://www.thespinstyle.com) and on Instagram@thespinstyleagency.

## LEARN MORE

WEBSITE: [THESPINSTYLE.COM](http://THESPINSTYLE.COM)

INSTAGRAM: [WWW.INSTAGRAM.COM/THESPINSTYLE](http://WWW.INSTAGRAM.COM/THESPINSTYLE)

LINKEDIN: [LINKEDIN DARCIE ADLER](http://LINKEDIN.DARCIEADLER)

LINKEDIN: [THE SPIN STYLE AGENCY LINKEDIN](http://THE SPIN STYLE AGENCY LINKEDIN)



# THE SPIN STYLE AGENCY



## ARTIST STATEMENT

“MY WORK AIMS TO CREATE TEMPORARY WORLDS IN WHICH THE VIEWER CAN ESCAPE FOR EVEN JUST A MOMENT. ”

- Paula Cuevas represented by The Spin Style Agency

## ABOUT

Paula is an independent set + stage designer who uses her background in Interior Design to explore a fascination with the human experience. Her work primarily focuses on altering physical space, whether it be in the form of prop styling for photo, full stage design for musical performance, or large scale installation, in order to give the viewer at hand a chance to escape their reality even for just a moment.

The Spin Style is an agency representing a stellar roster of art directors, wardrobe stylists, prop stylists and hair and makeup artists. We are based in Atlanta, but working globally. See our work: [www.thespinstyle.com](http://www.thespinstyle.com) and on [Instagram@thespinstyleagency](https://www.instagram.com/thespinstyleagency).

## LEARN MORE

WEBSITE: [THESPINSTYLE.COM/HOME/PAULA-CUEVAS](http://THESPINSTYLE.COM/HOME/PAULA-CUEVAS)

INSTAGRAM: [INSTAGRAM.COM/IMPAULAA](https://www.instagram.com/impaulaa)

PINTEREST: [PINTEREST.COM/IMPAULAA](https://www.pinterest.com/impaulaa)



# guy

GUY WELCH PRODUCTIONS



## ARTIST STATEMENT

“THERE IS MORE TO IT THAN MEETS THE EYE, THAT IS WHAT SEPARATES MY PHOTOGRAPHY FROM TAKING PICTURES. ”

- Guy Welch

## ABOUT

Seeing the world through a viewfinder helps decode the questions that exist all around us. Guy Welch has been making photographs since before he can remember (there's actually photographic evidence), but he's been using that skill to help his clients solve creative problems for over 30 years. With the unique ability to elevate the mundane into interesting subject matter, he has been called upon by major brands all over the world to help market products and the people that make them. Whether it's creating custom environments in his studio in Atlanta, Georgia or capturing conceptual ideas on location, solving visual problems by learning how things tick sets Guy apart from the rest of the field. He's just knowledgeable enough about everything to be dangerous!

## LEARN MORE

WEBSITE: [WWW.GUYWELCHPRODUCTIONS.COM](http://WWW.GUYWELCHPRODUCTIONS.COM)

FACEBOOK: [@GUYWELCHPRODUCTIONS](https://www.facebook.com/GUYWELCHPRODUCTIONS)

INSTAGRAM: [WWW.INSTAGRAM.COM/GUY\\_WELCH\\_PRODUCTIONS](https://www.instagram.com/GUY_WELCH_PRODUCTIONS)

LINKEDIN: [WWW.LINKEDIN.COM/IN/GUYWELCH](https://www.linkedin.com/in/GUYWELCH)



# INFLUENCER





“EVERYTHING IS ART”

“The authenticity of creativity of art by a child is the most honest and free expression, as they work without boundaries or limits. Malea, age 9, created bold and vibrant water color sets that are an inspiration for Shaper Sense Drum color groups using FilzFelt 100% Wool Design Felt.”

MEDIUM: “Splatter” Watercolor



THE  
Malea, age 9

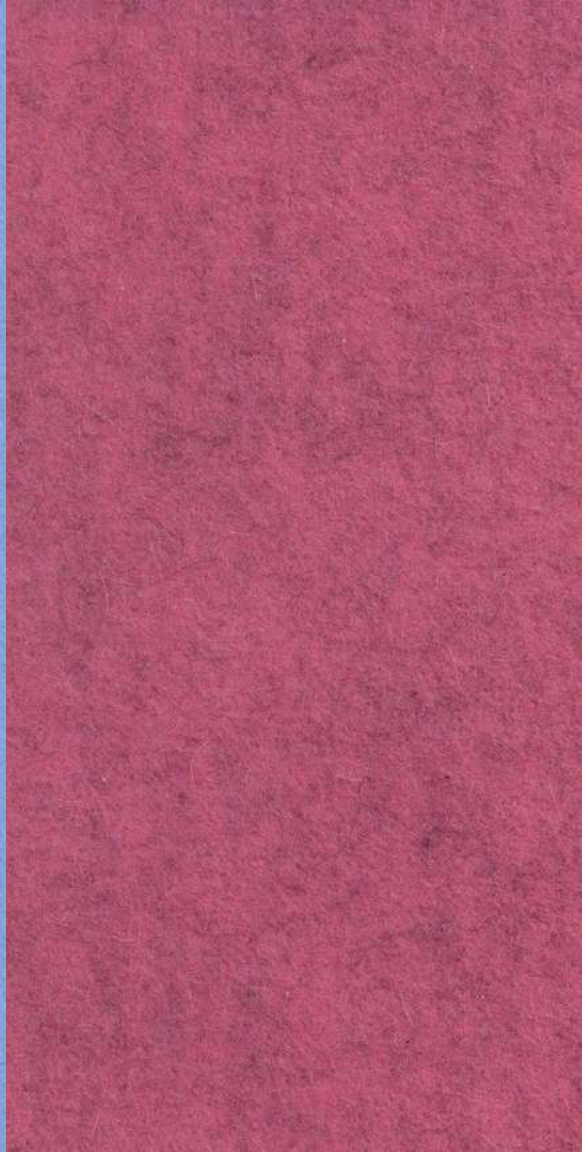
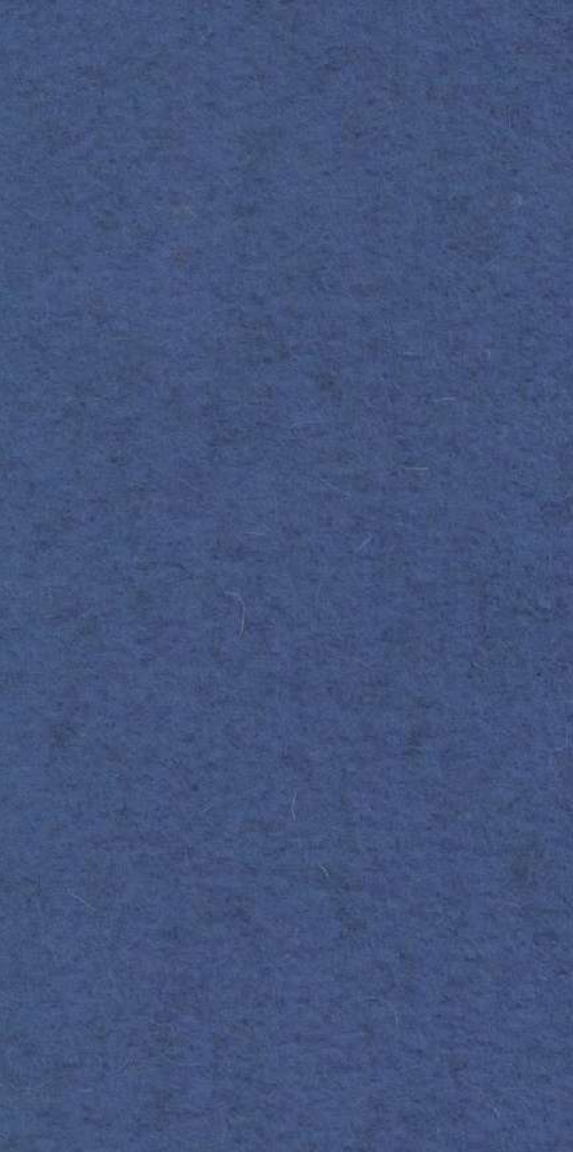
COLLECTION

INSPIRATION FOR SHAPER SENSE DRUM





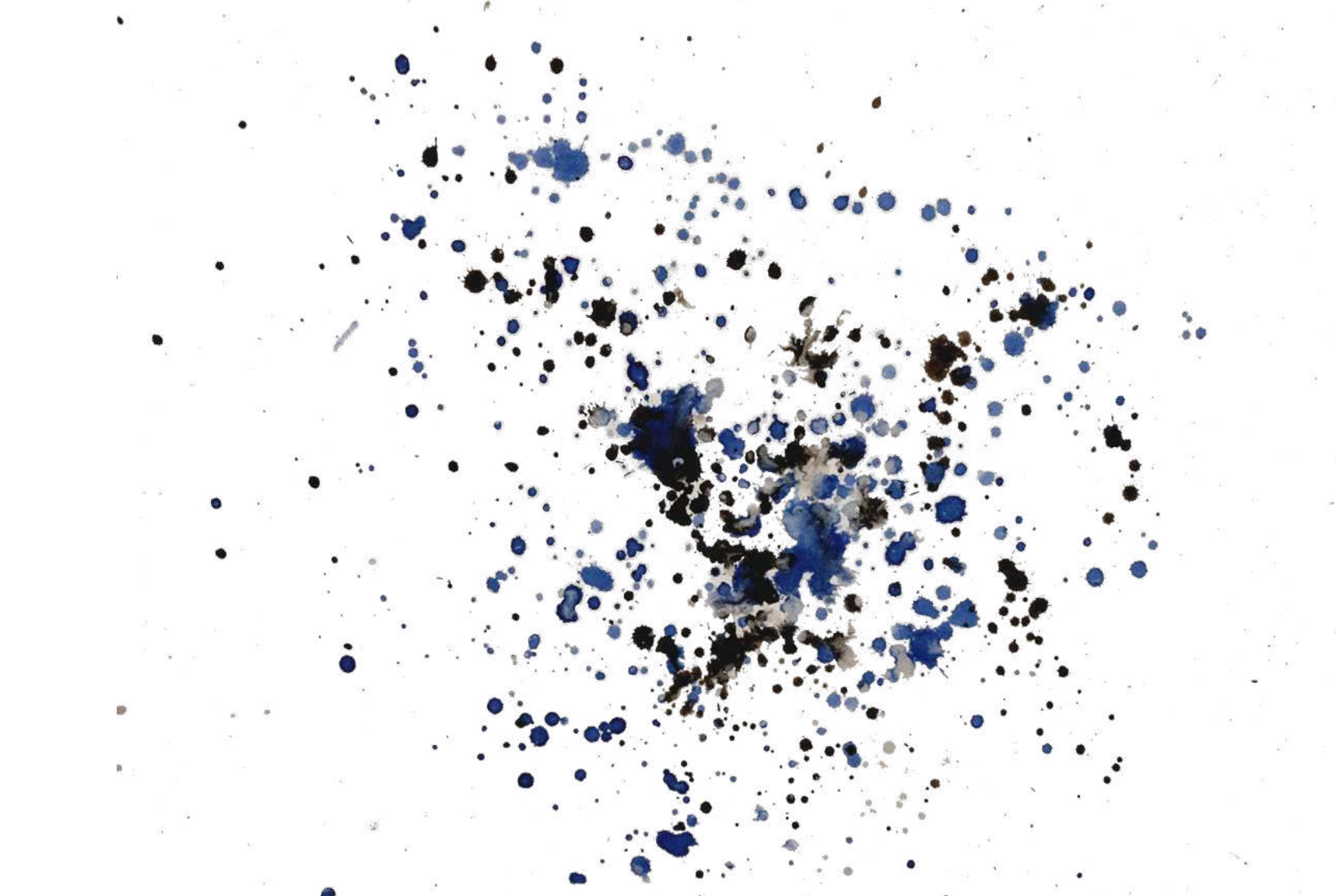








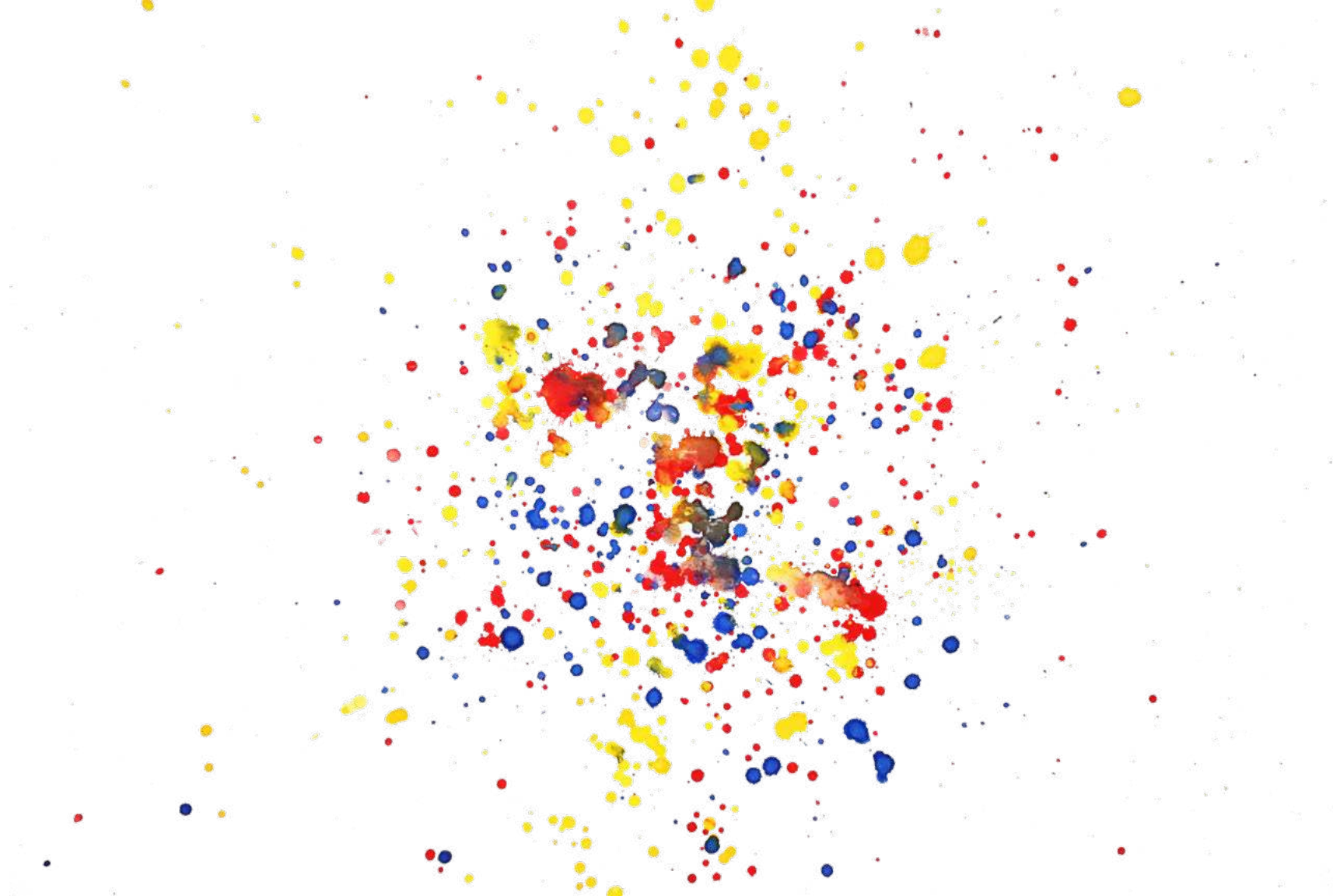




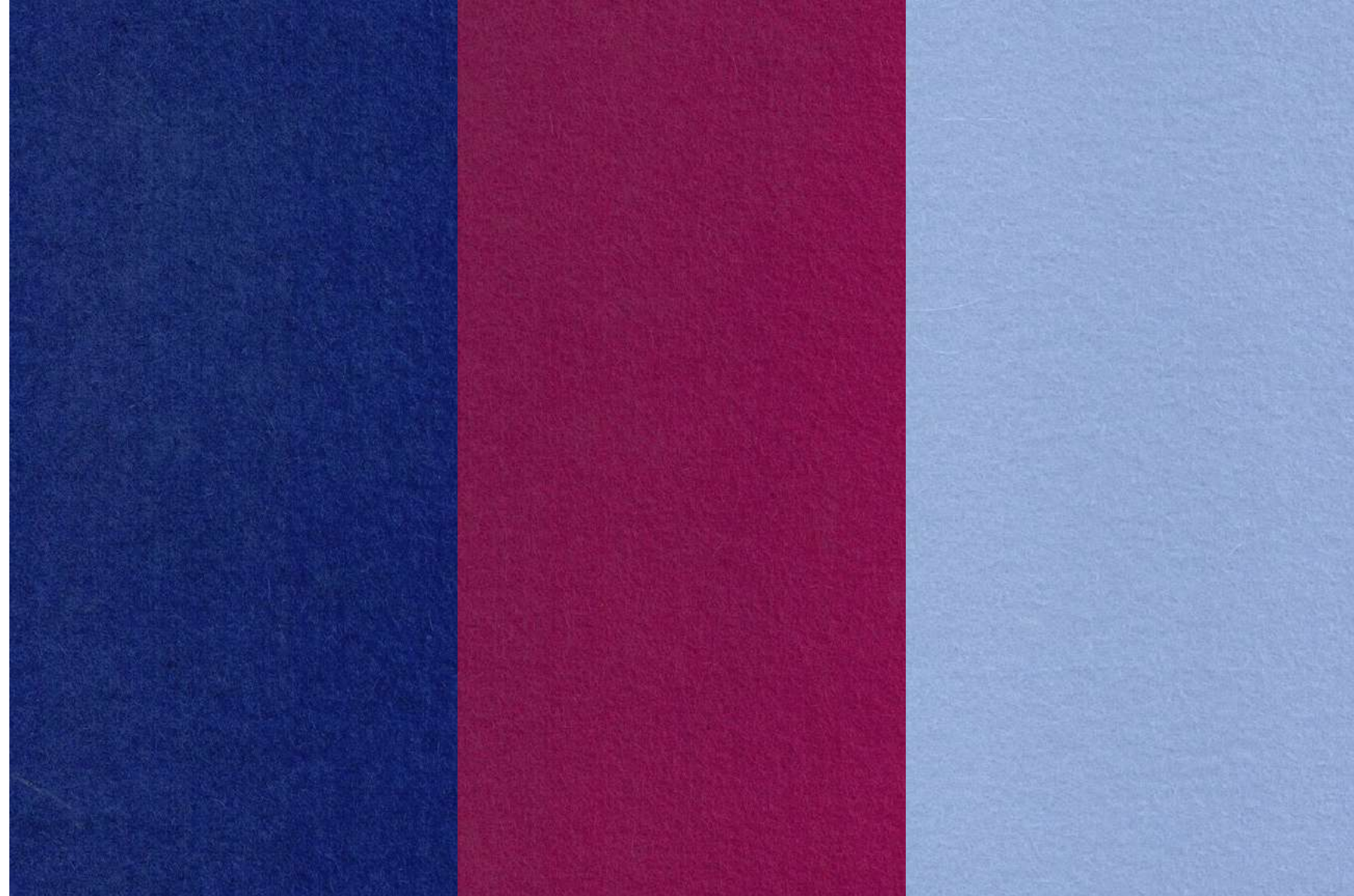
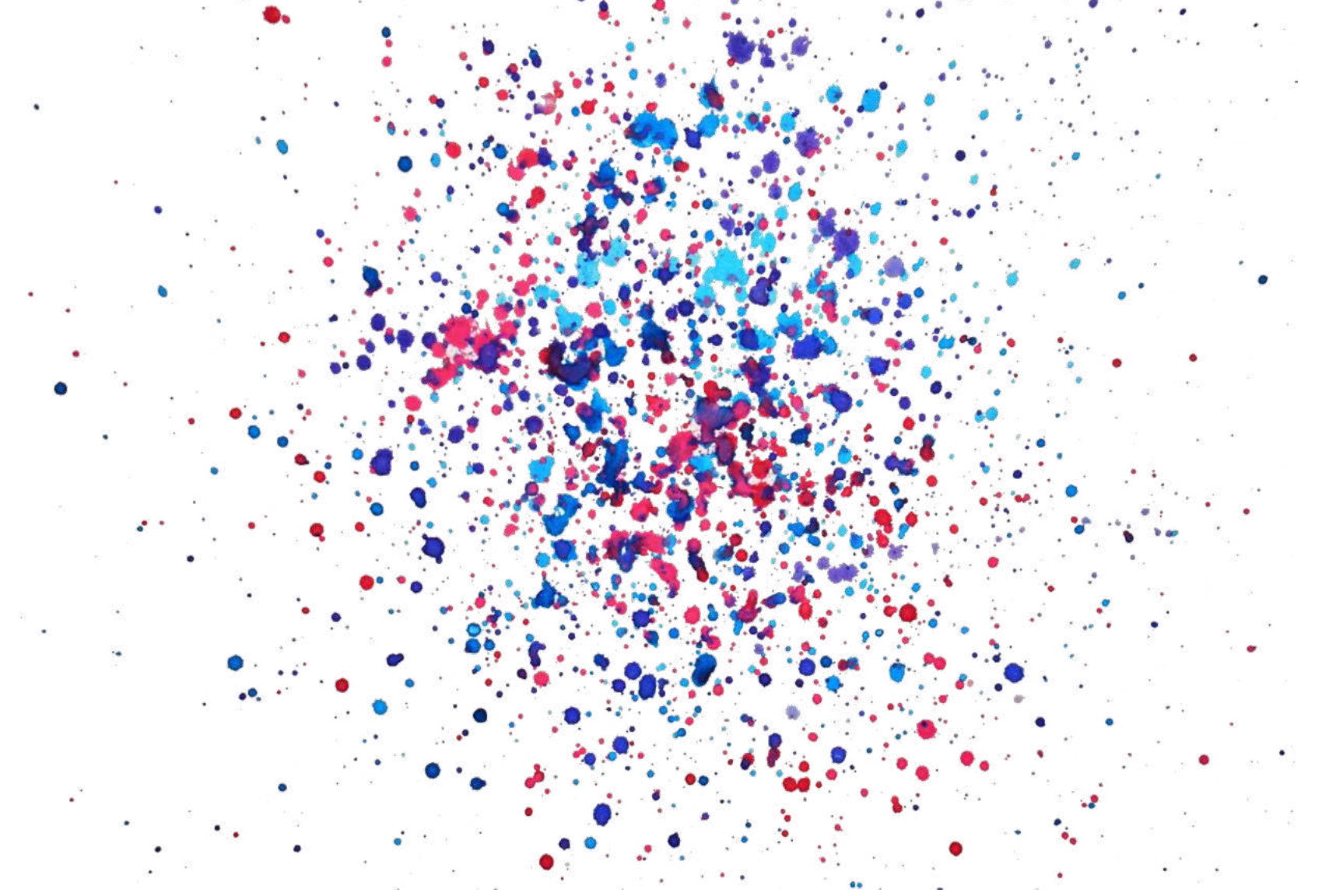




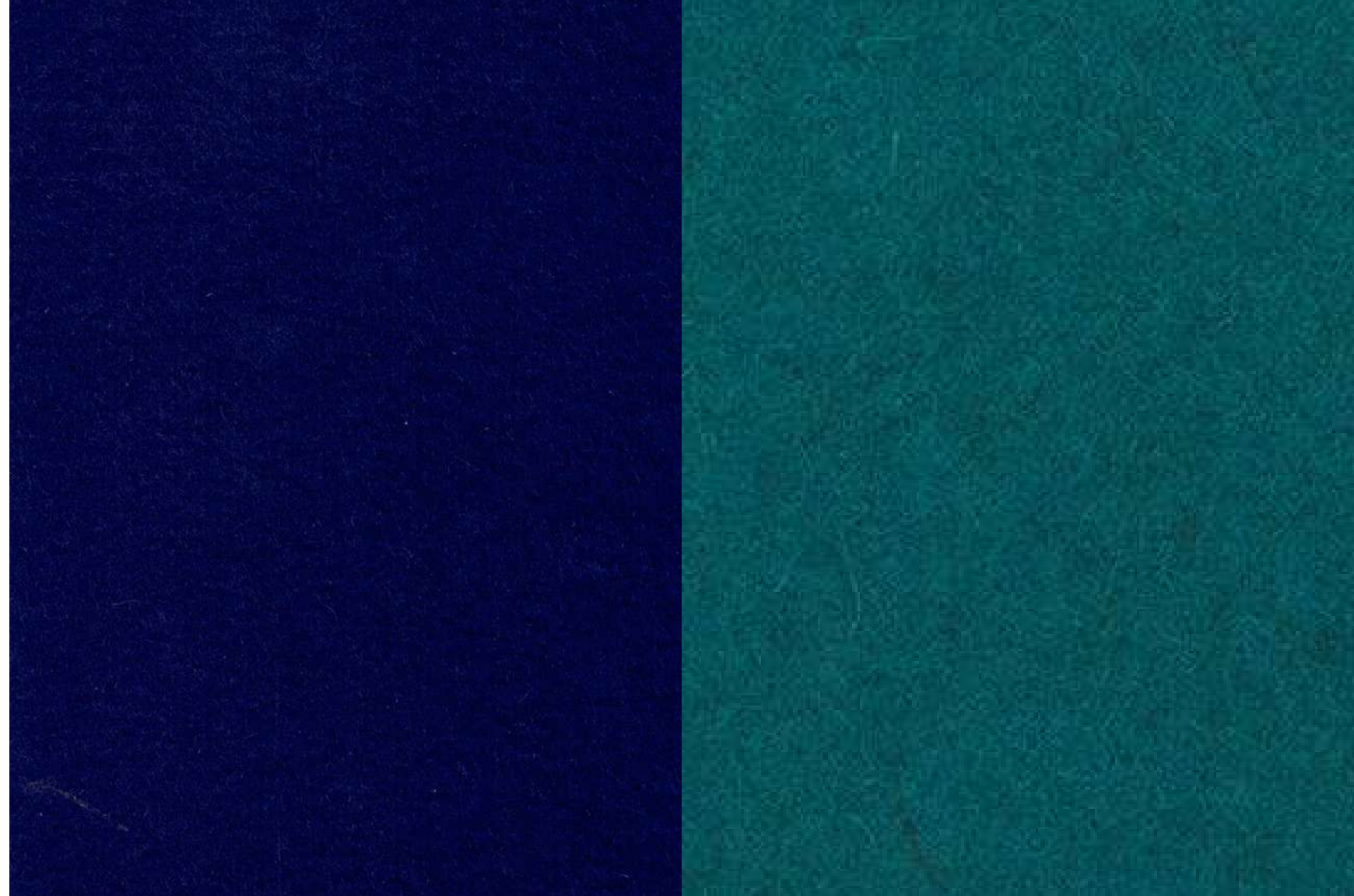
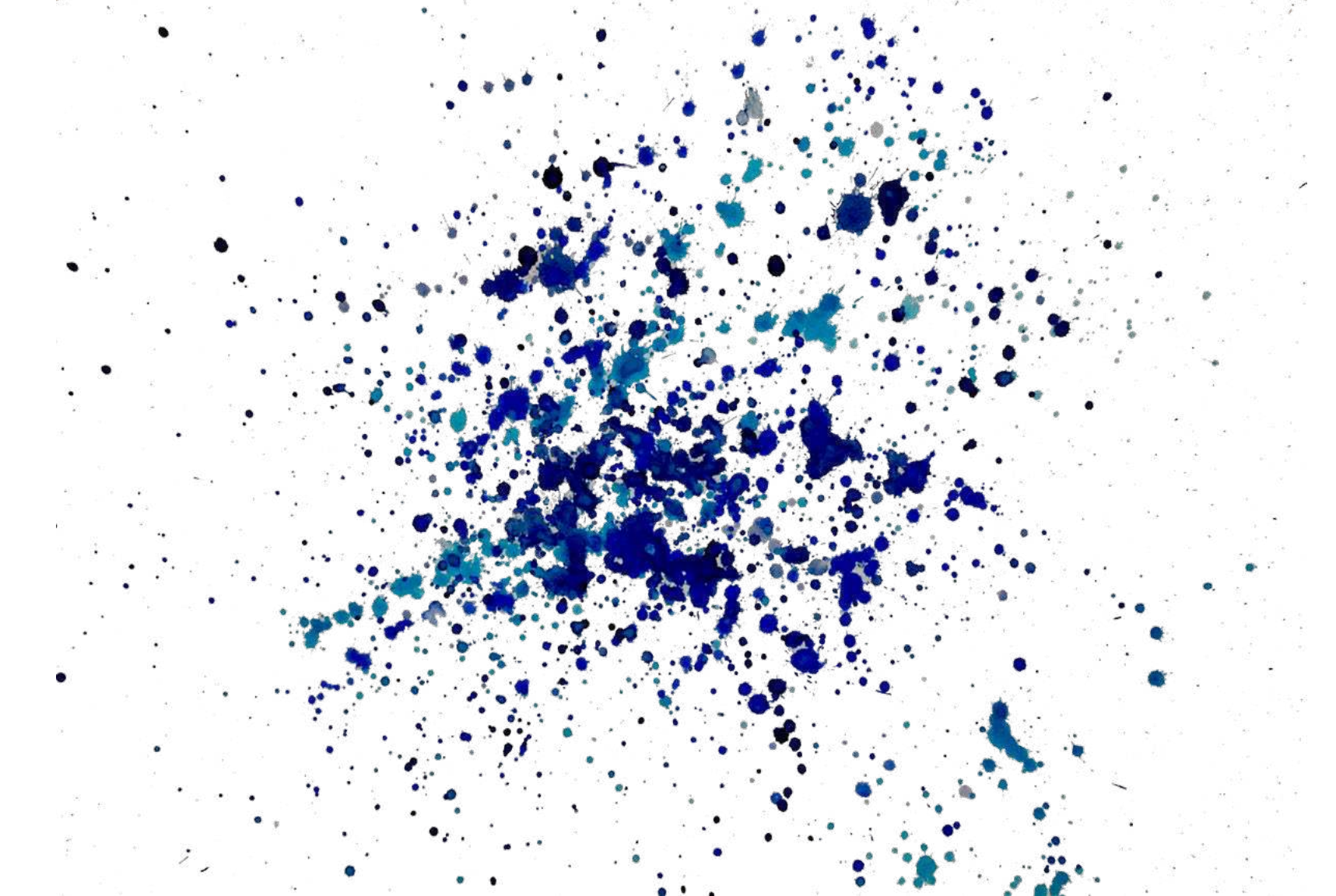




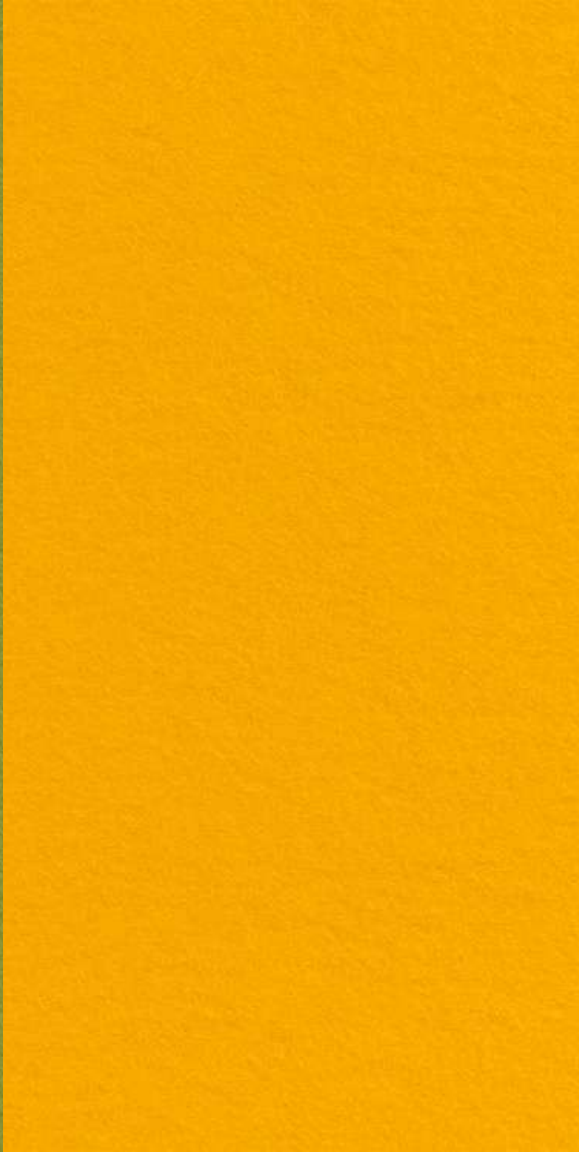
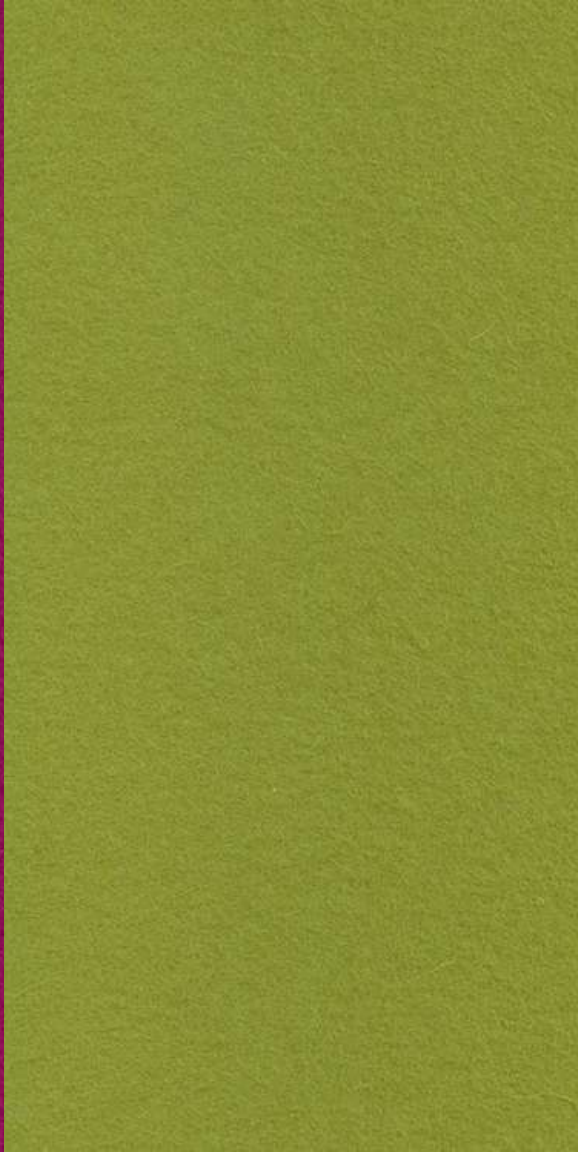
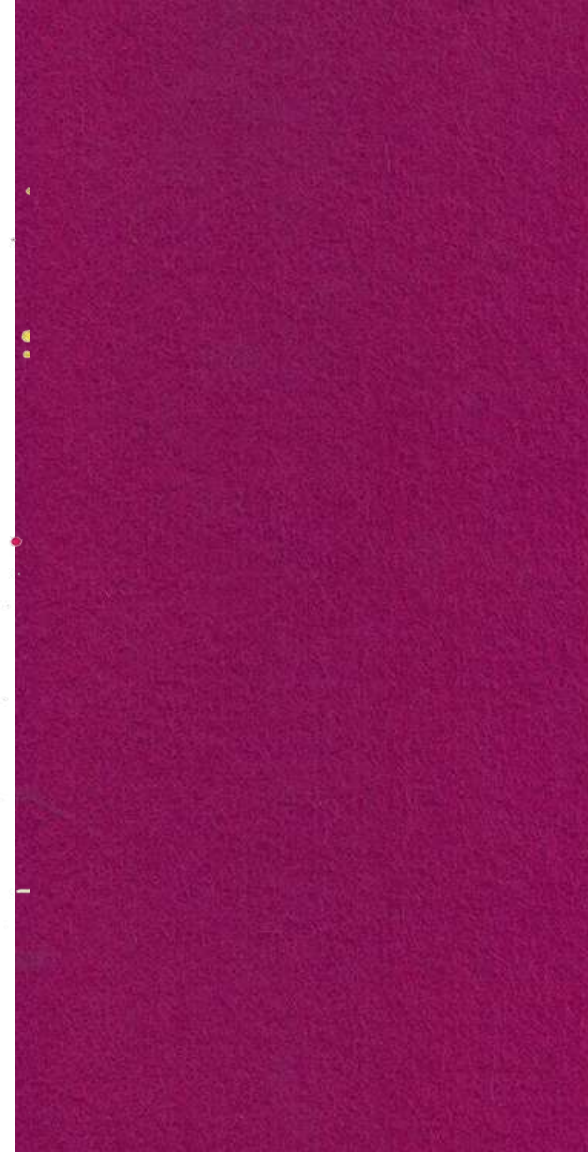








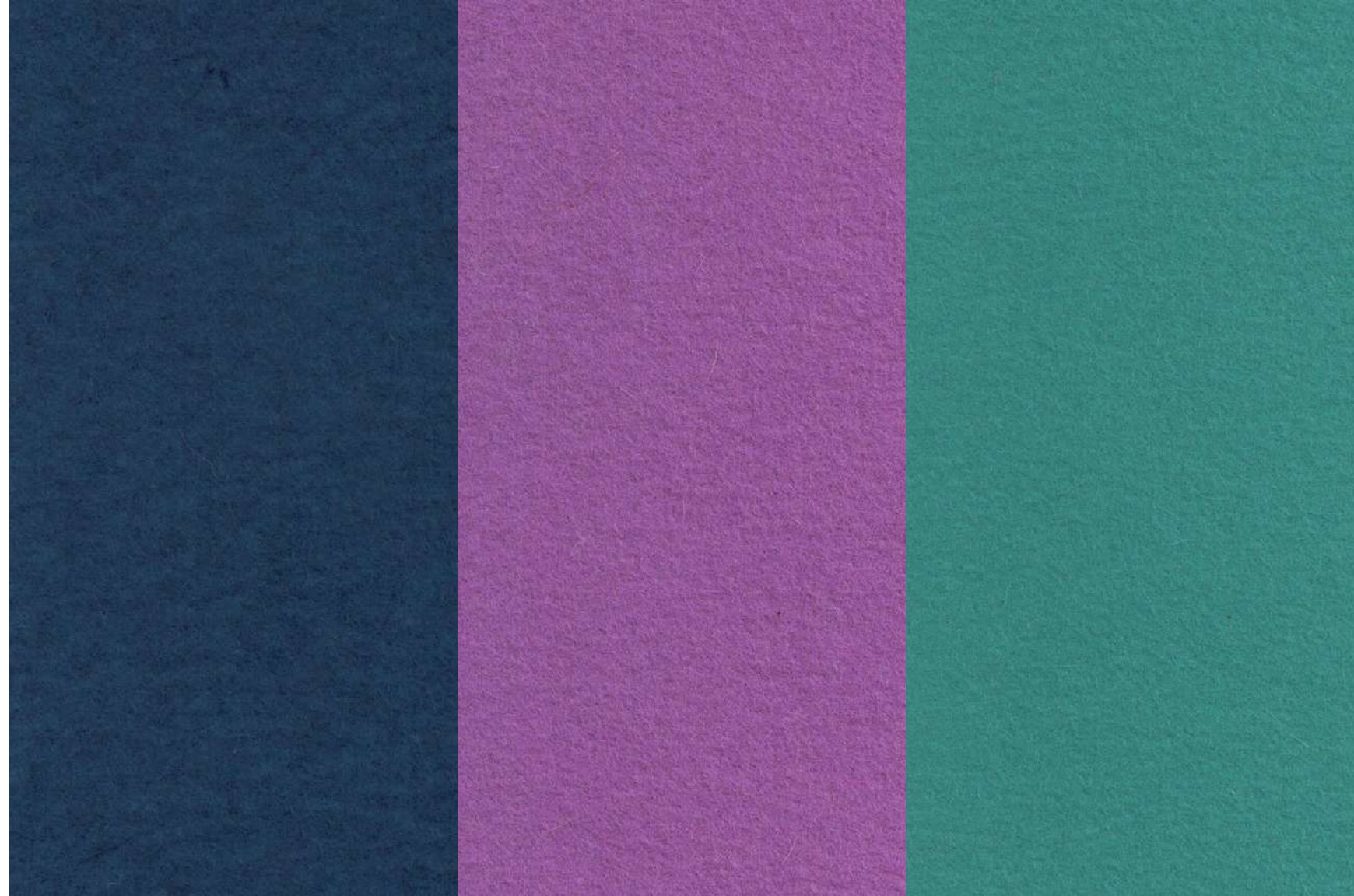
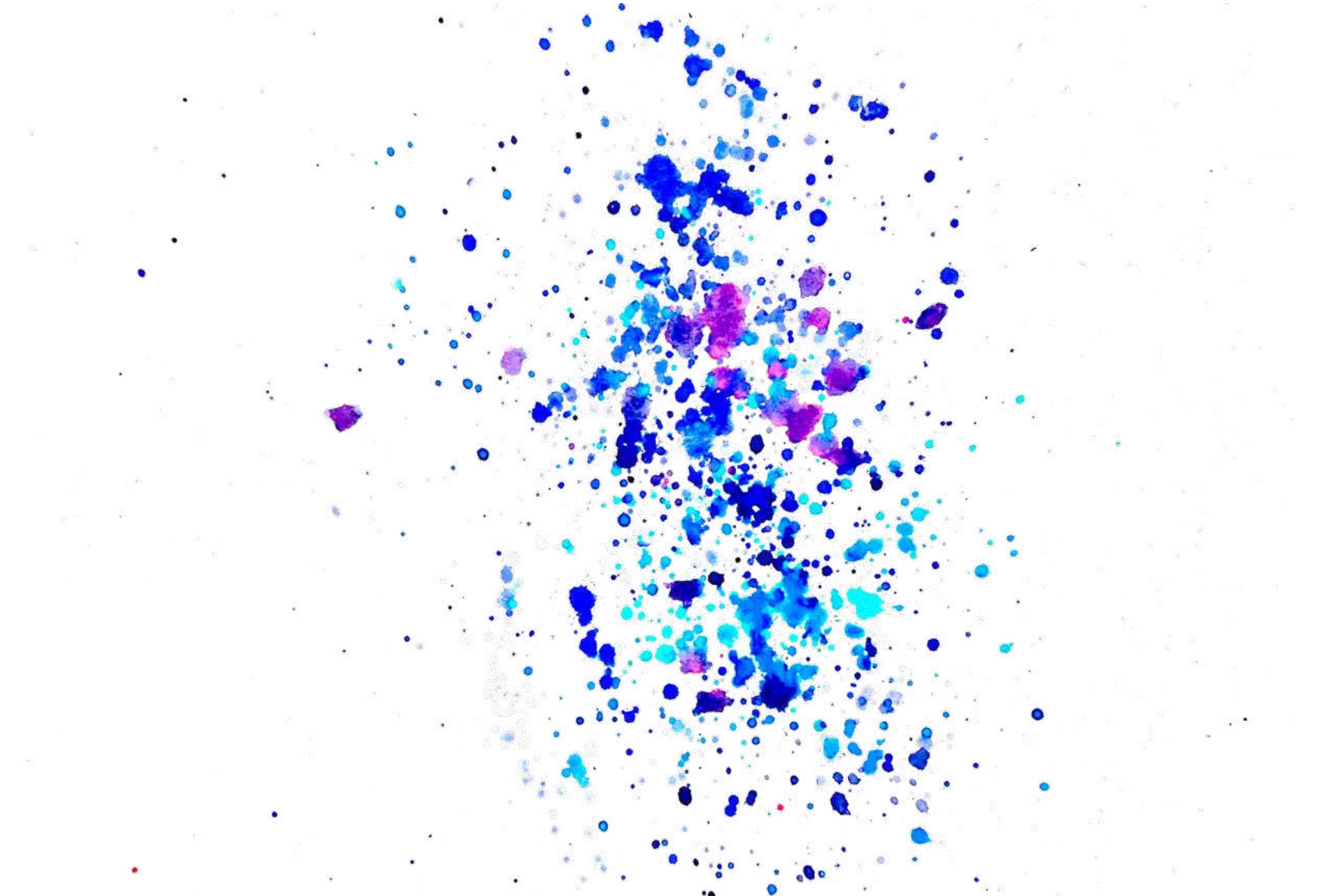








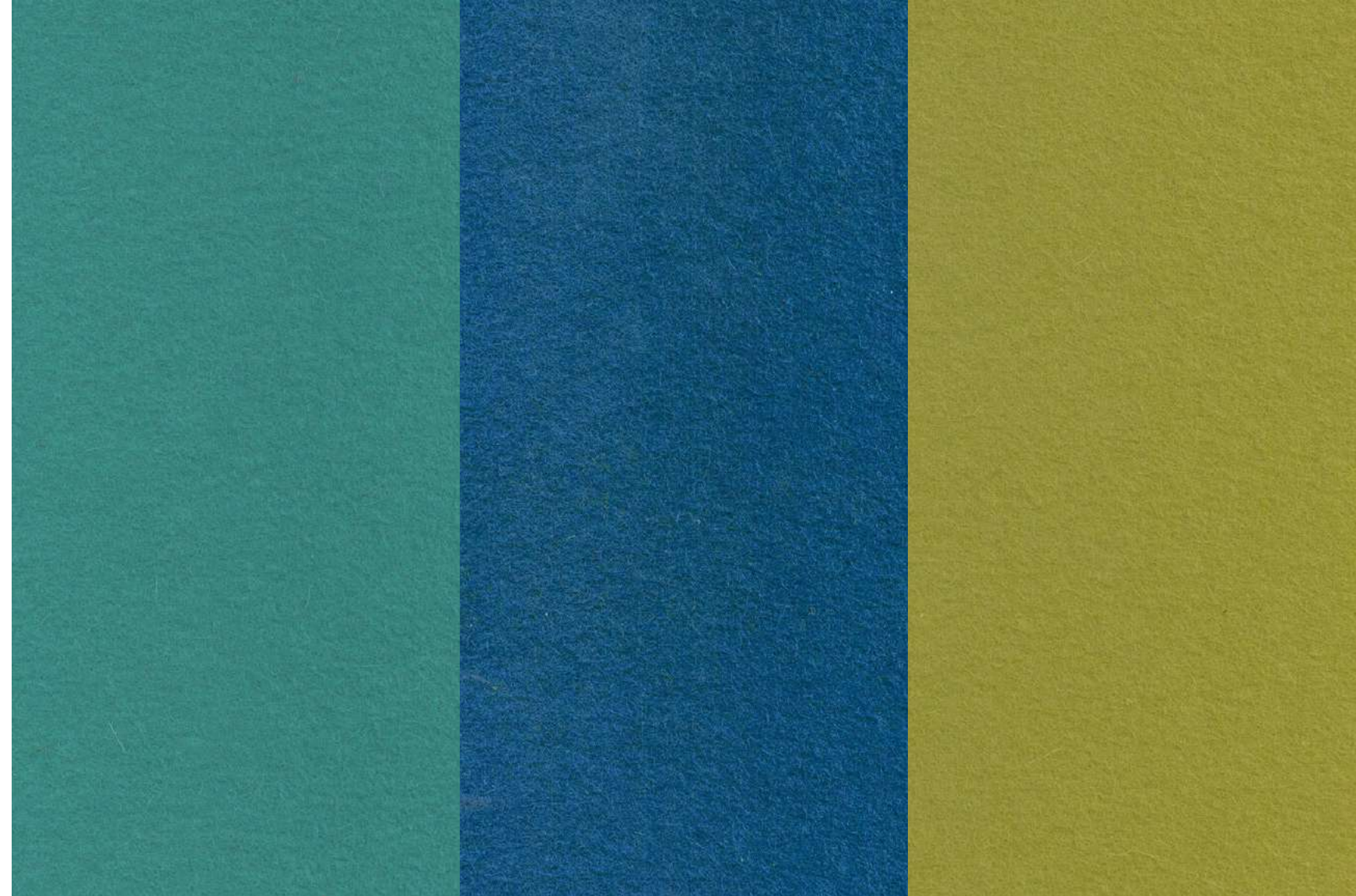




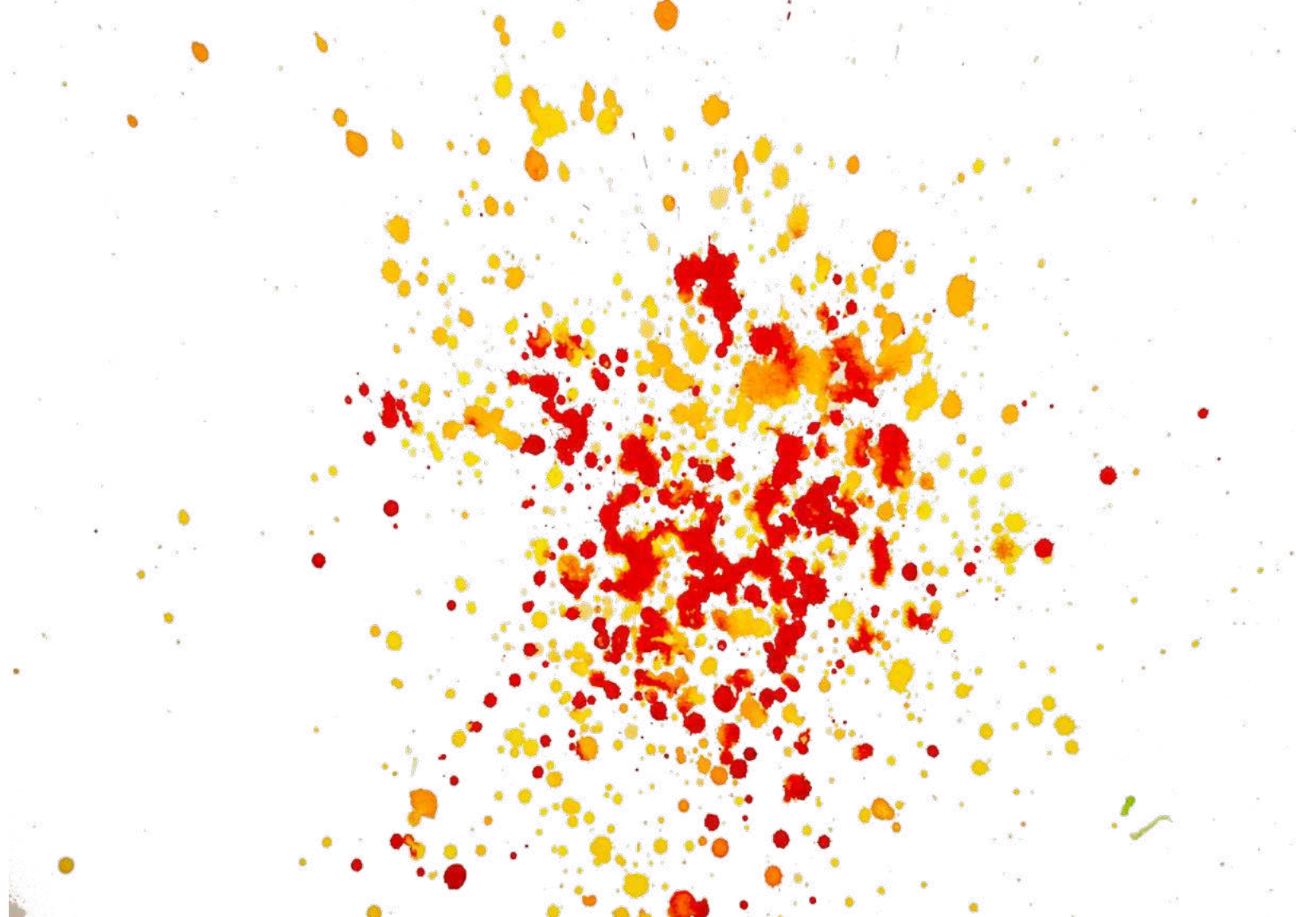




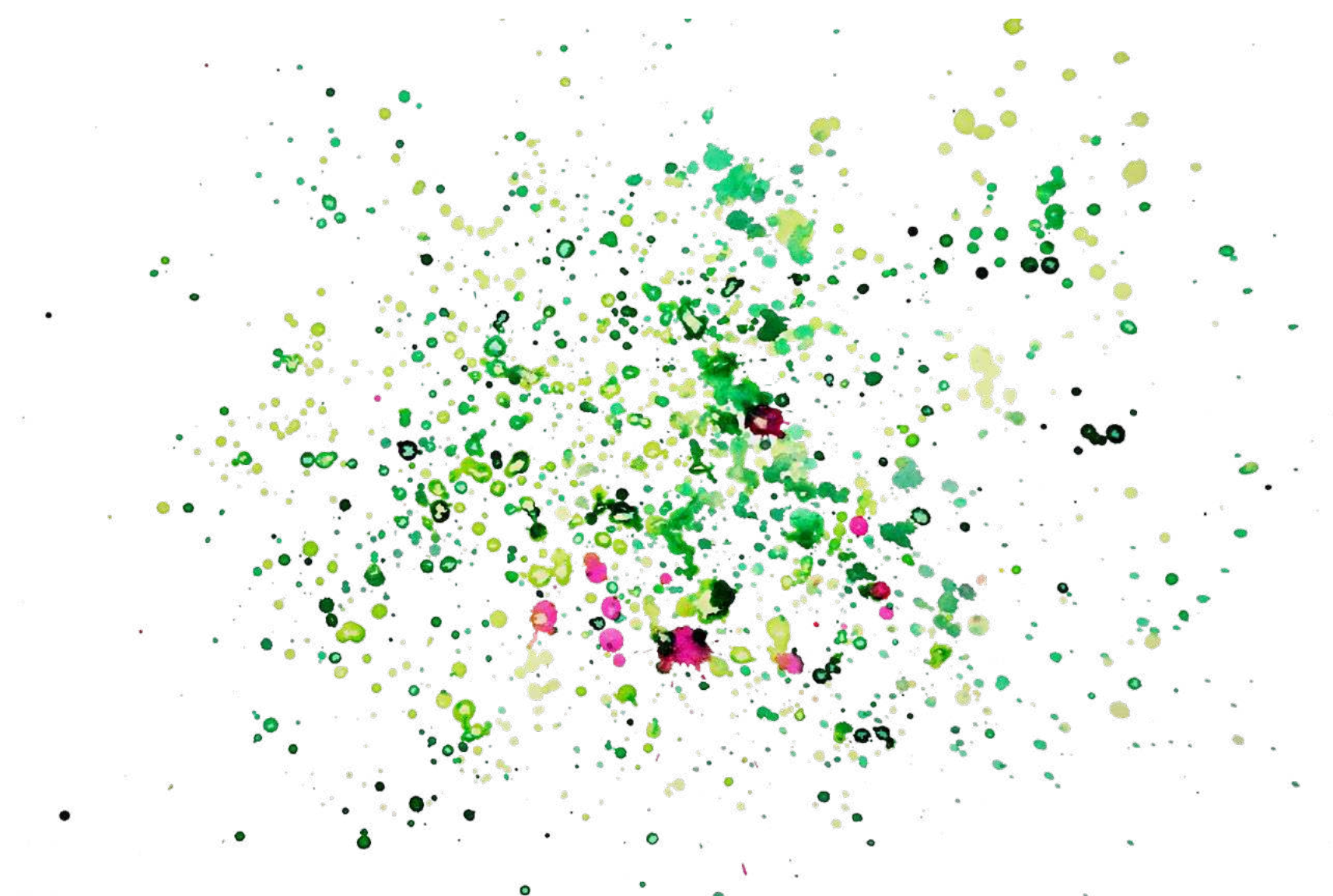




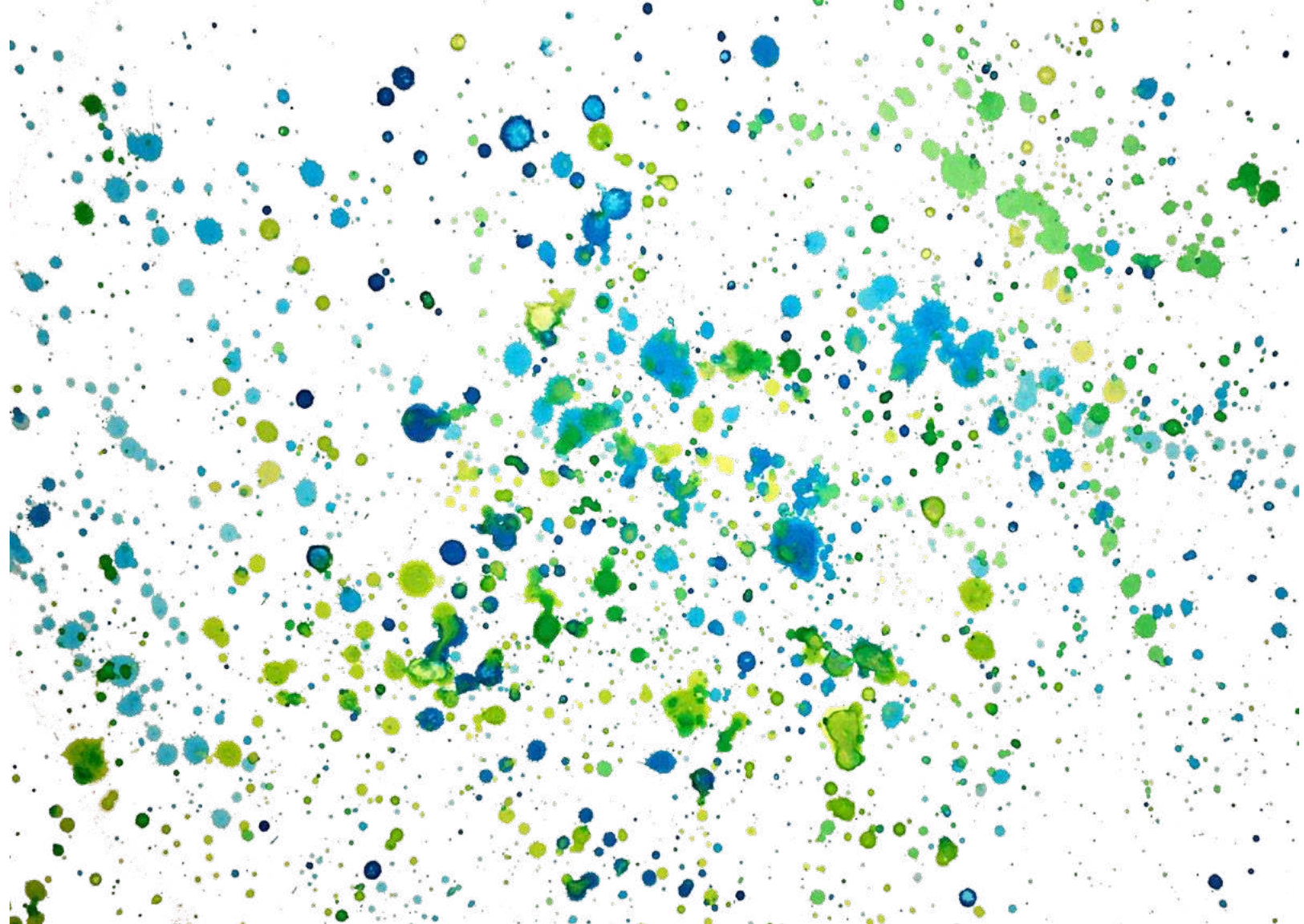




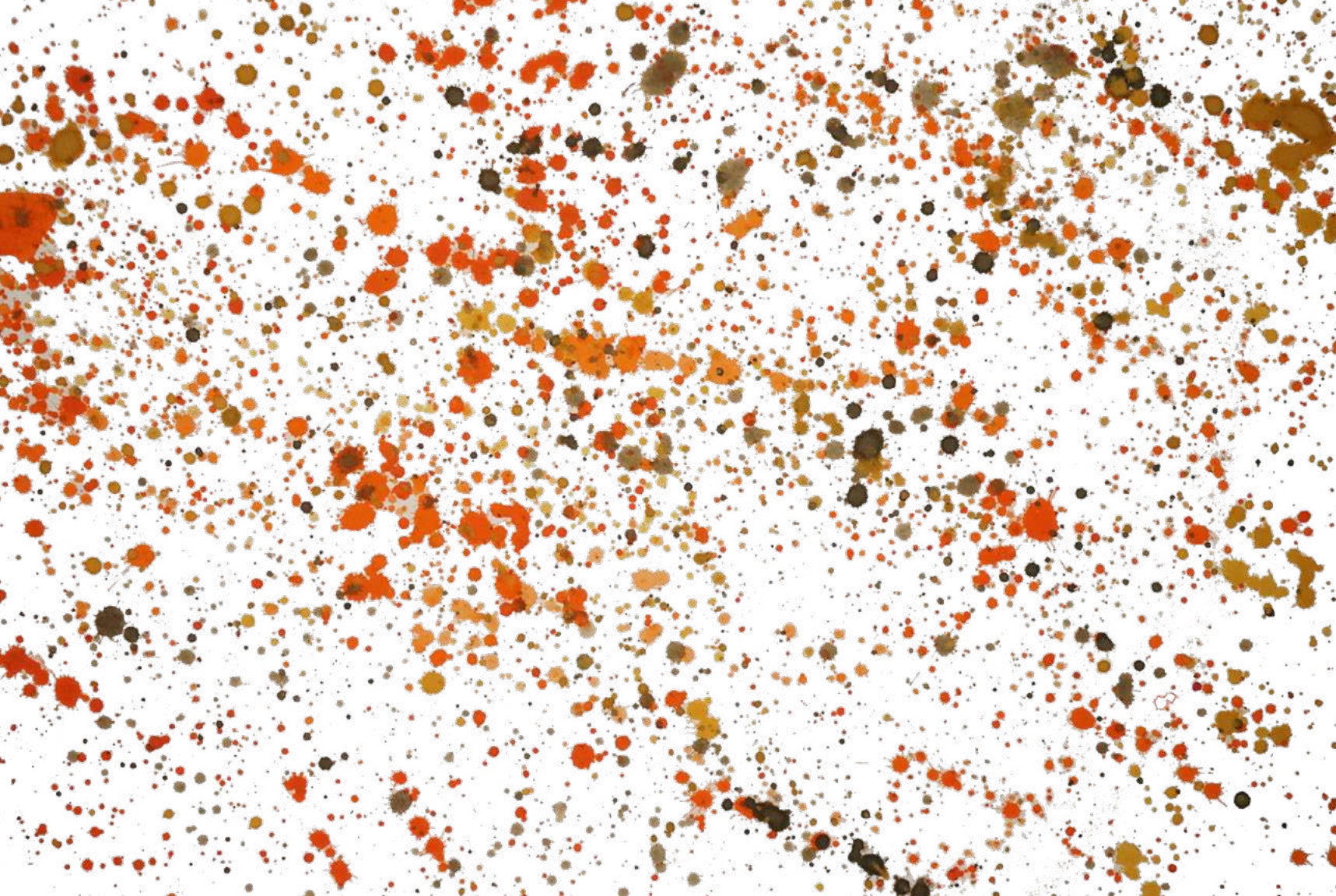








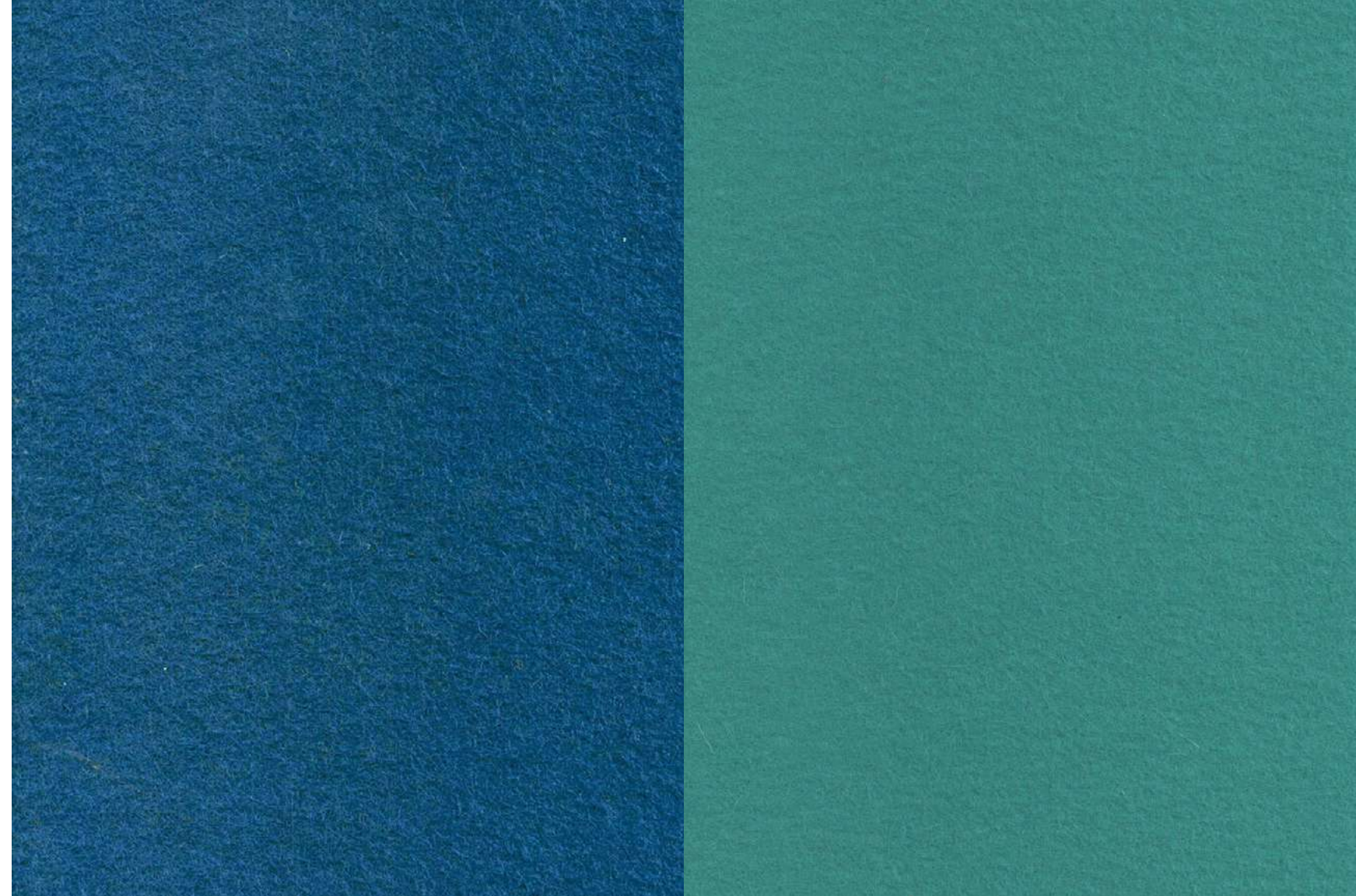
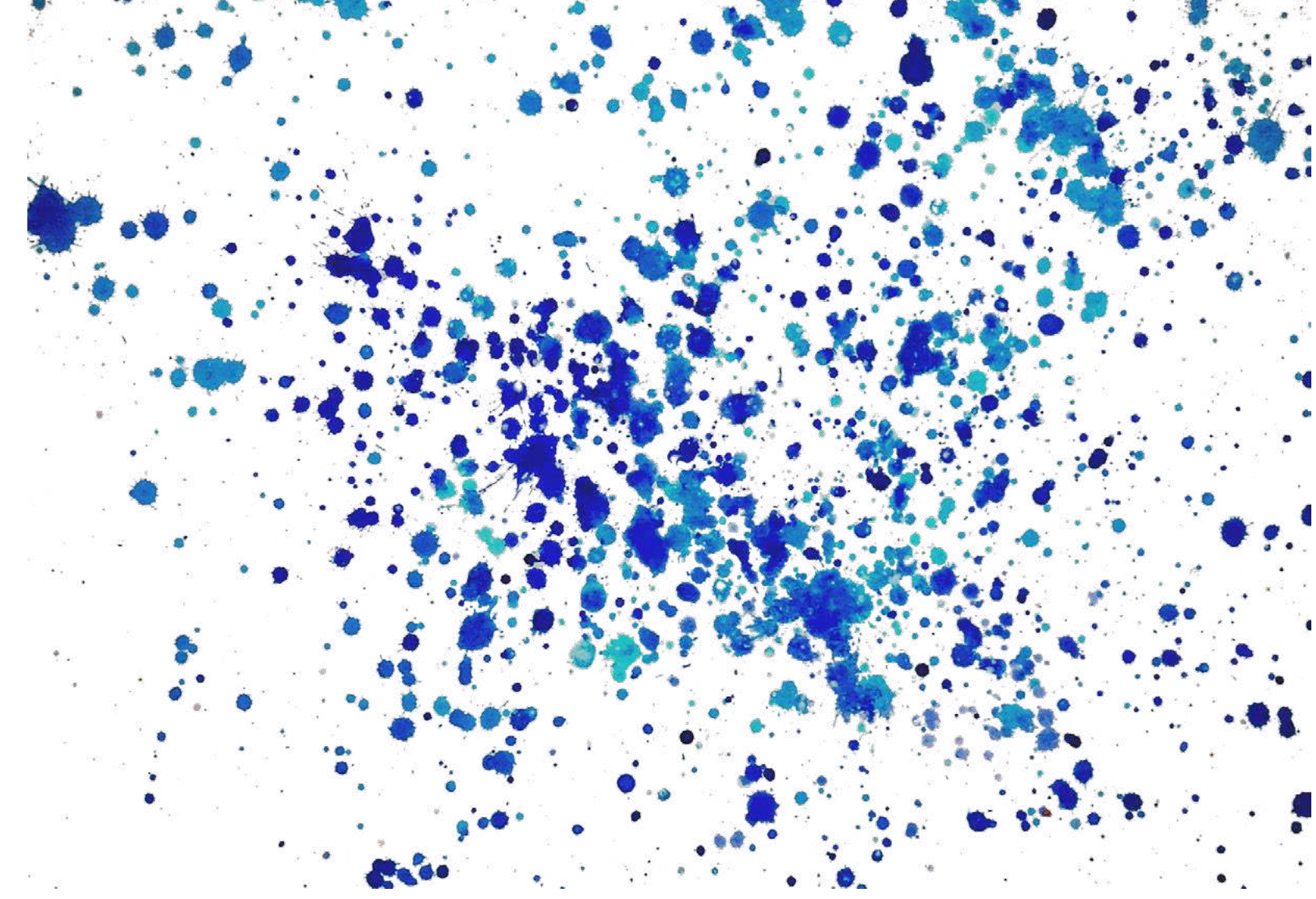




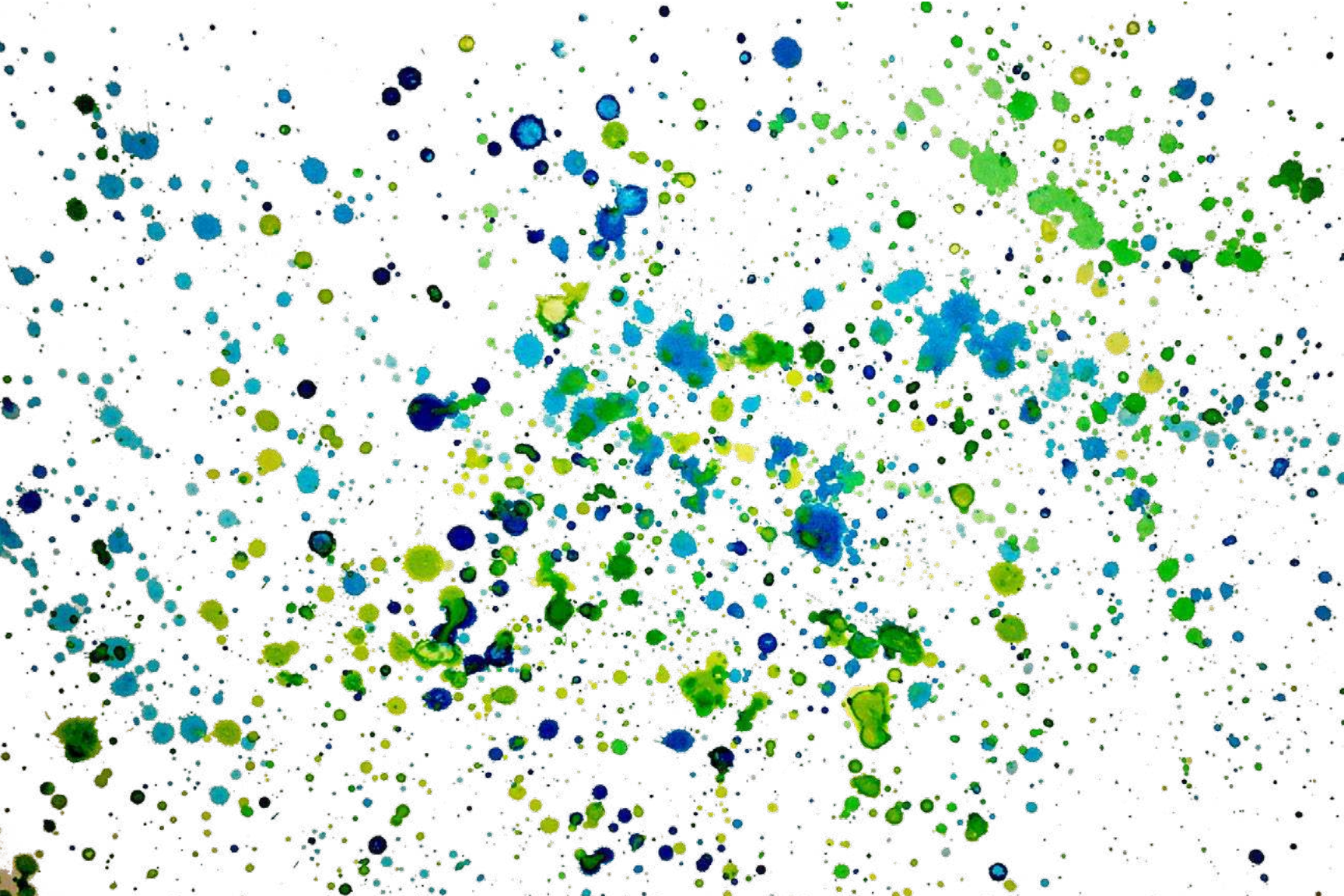




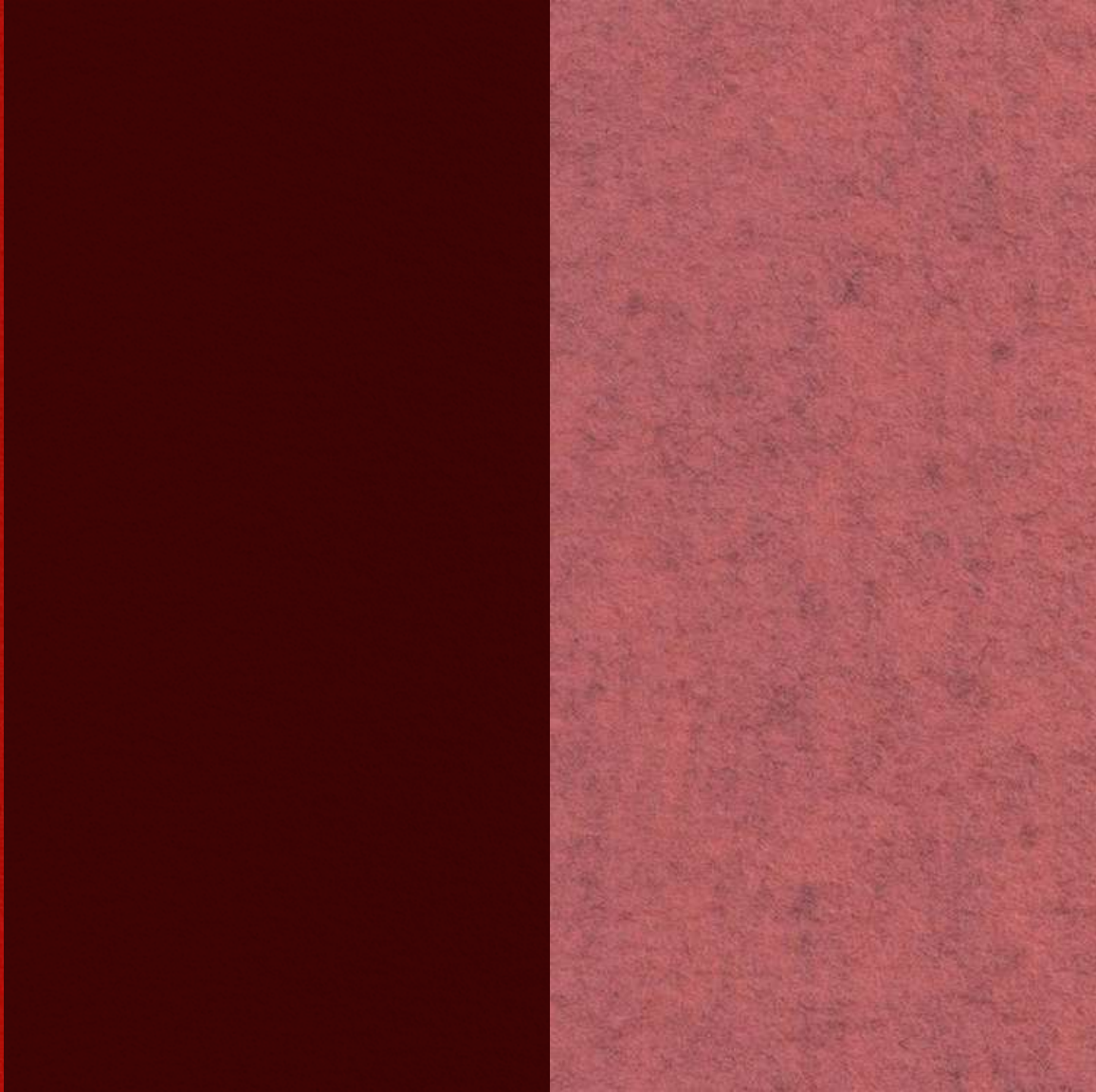




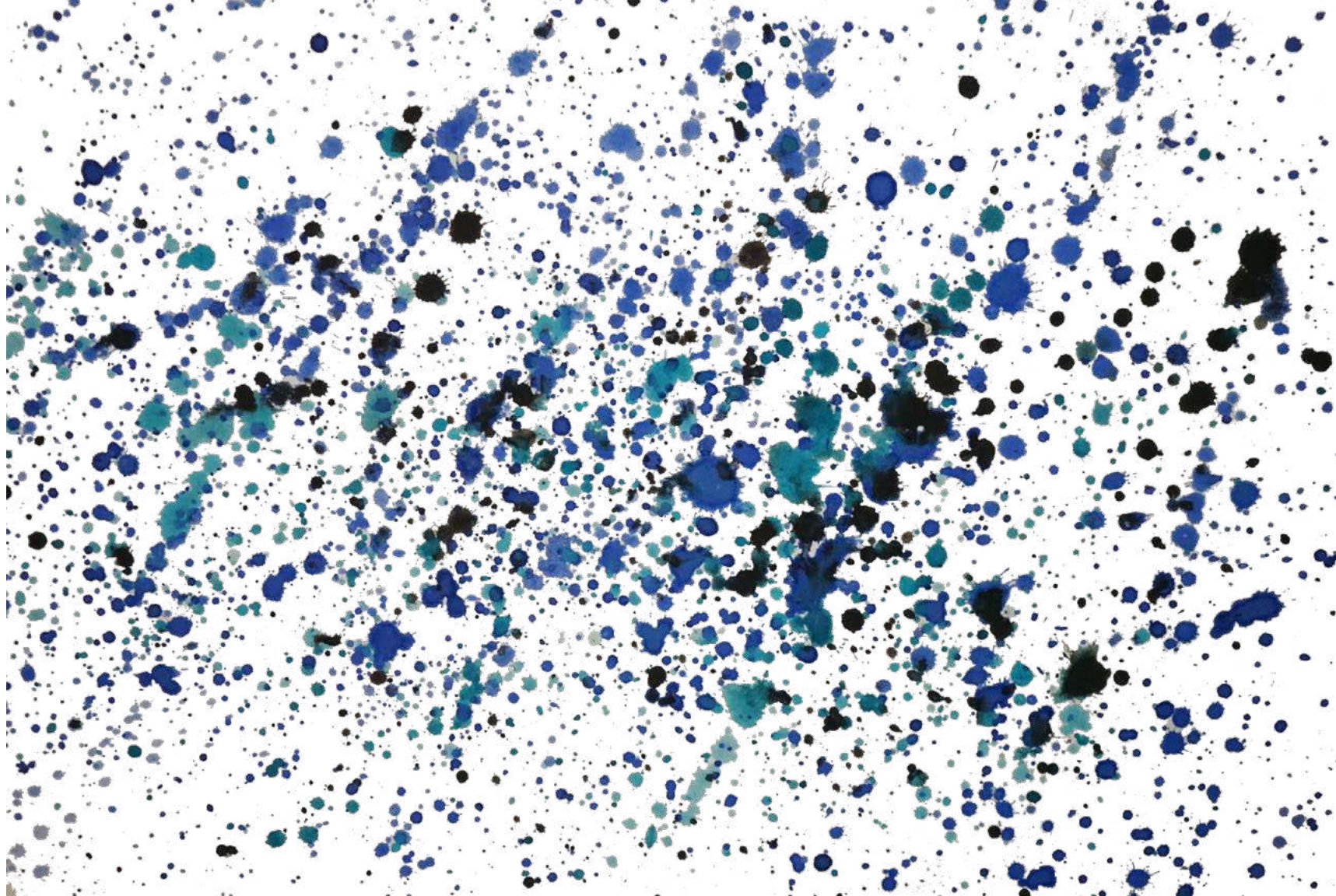




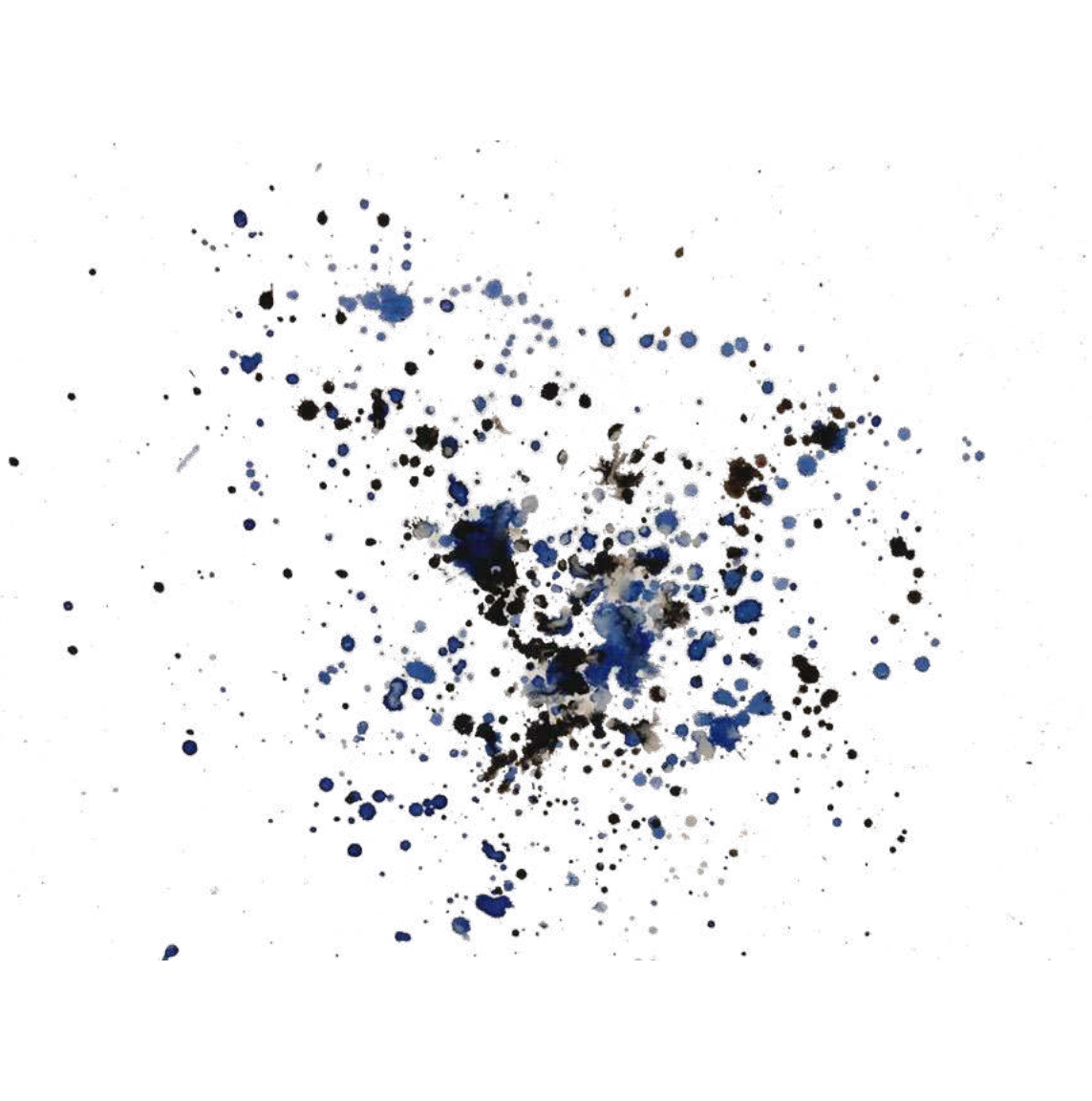














Malea, age 9



#### **ARTIST STATEMENT**

"I SEE THE WORLD LIKE EVERYTHING IS ART. EVERY THING IS BEAUTIFUL IN IT'S OWN WAY"

- Malea, age 9

#### **ABOUT**

There has been good and bad times in life, like most people. But so far, life has been amazing because of good care, healthy food and the best of time and space, with mommy, daddy, and brother..

#### **FUTURE**

I would like to be an artist of all kinds of arts and crafts. The reason I would like to be an artist is because I have been doing it for many, many, years and I love to do it.