



Portfolio

LD1 | LA1 1-inch multi-cell

Downlight, Adjustable
and Wall Wash

Insightful Design

Specification grade ultra-small multi-cell product family.

Sleek

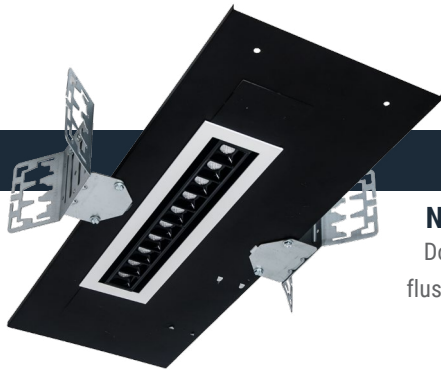
Discrete

Customizable



Features

- >200 lumens per cell
- Standard 0-10V, 120-277V, 1% with dual leading edge driver
- Optional 0-10V 0% driver
- DALI driver
- DMX driver
- DLVP
- 90 CRI
- 2700K, 3000K, 3500K, 4000K
- Emergency battery back up available
- LumaWatt Pro
- Wavelinx



LD1M | LA1M

New Construction
Downlight | Adjustable
flush mount plaster install



LD1MRT | LA1MRT

Retrofit
Downlight | Adjustable
install from below the ceiling

1.2"



The LD1 combines energy efficiency with superior cutoff, optical performance and control for Architectural applications.

- This complete family is designed for glare free illumination from a discrete source offered in 30° and 50° downlight and adjustable in addition to a lensed wall wash.
- Available in new construction or install from below providing the perfect solution for integration in all spaces.
- The comprehensive line includes a multitude of driver options, color temperature, CRI, 2 beam distributions and reflector finishes.
- The small aperture is available with a flangeless trim for mud in applications creating an architecturally pleasing, seamless installation.

