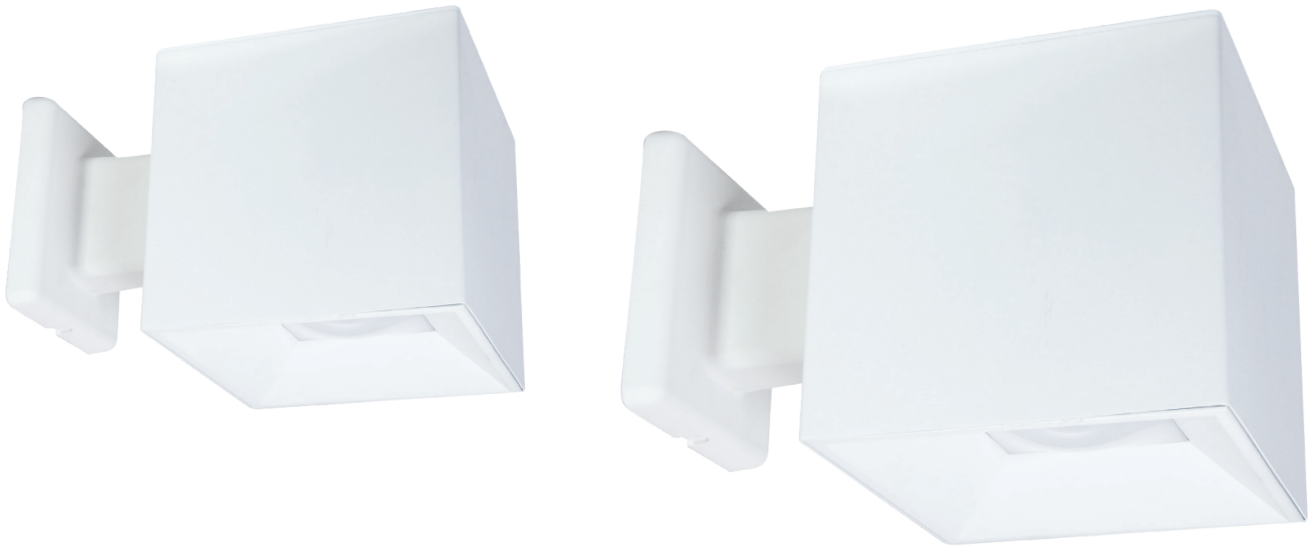




Portfolio

Surface Mount

2-inch, 4-inch, 6-inch & 8-inch
Surface & Wall Mount Cylinders



Illuminate your creativity

Designed to complement any architectural space, the 2, 4, 6, and 8" LED round and square, standard or shallow height cylinders complement any space with wall, ceiling, pendant-mount, or aircraft cable options. A two-stage system produces smooth distribution with excellent light control and low aperture brightness. The cylinders are available in multiple lumen packages, color temperatures and a variety of finishes with custom options. Standard 0-10V driver dims to 1% and a multitude of optional drivers are available. Creating the perfect atmosphere is easy with these sleek cylinders that offer a variety of color control and connected options.





LSR2B, LSSQ2B
2" Round and Square Cylinders



LER4C/LESQ4C
4" Round and Square Cylinders



LERS6C/LESQS6C
6" Shallow Round and Square Cylinders

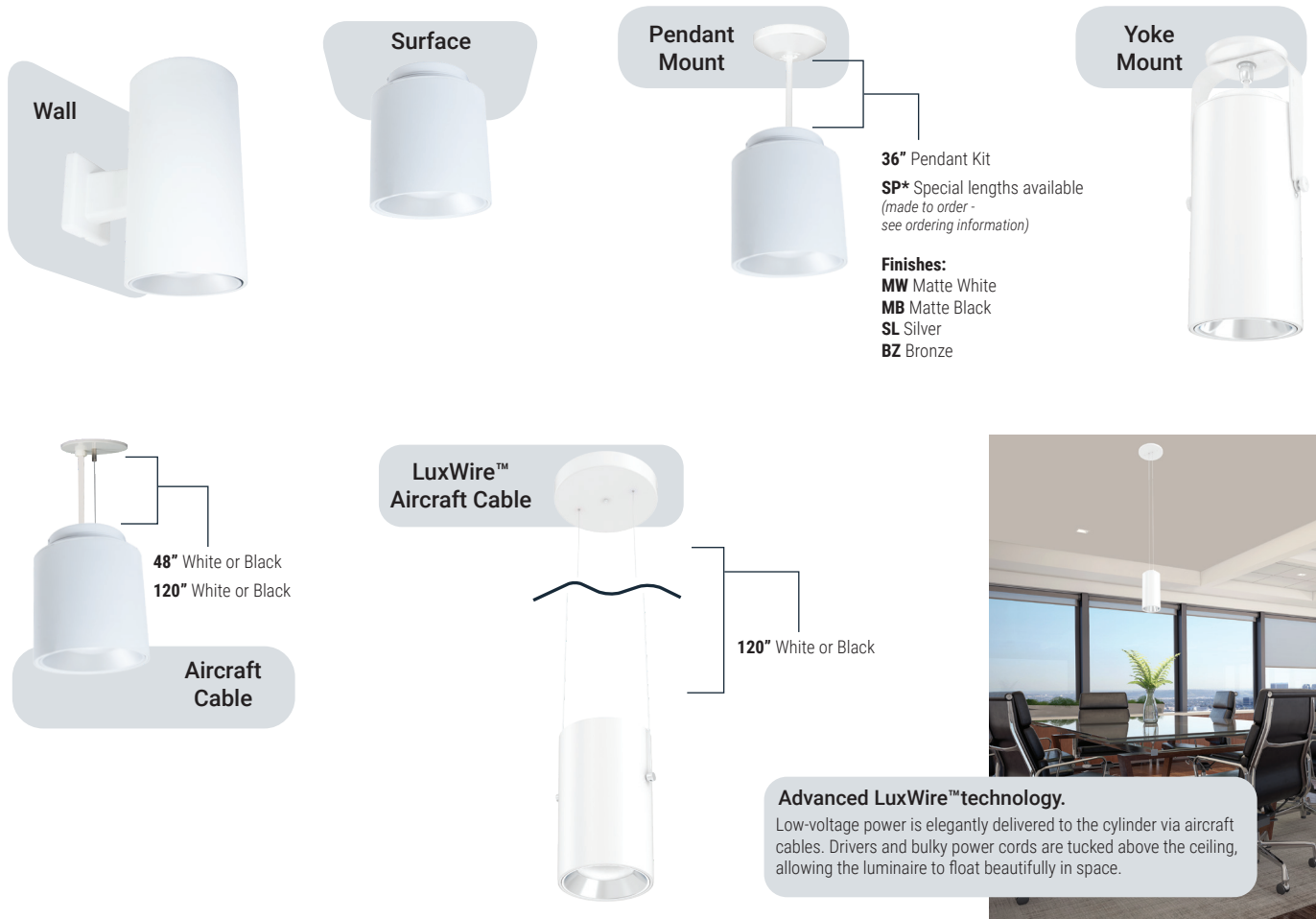


LSRS8B/LSRSWM8B
8" Shallow Round Cylinders

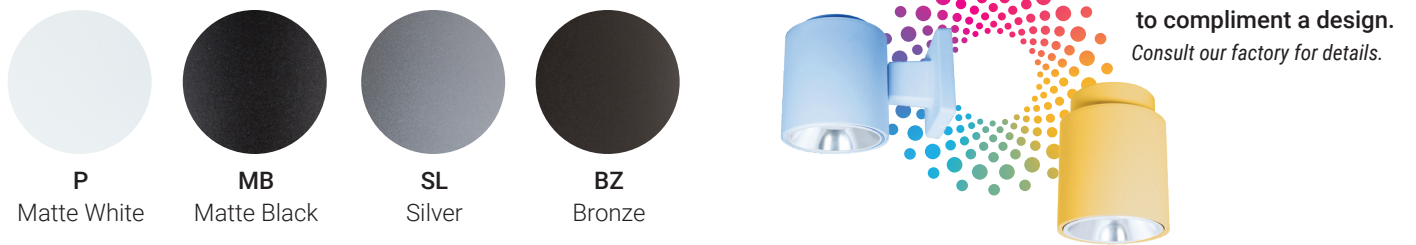


- Available lumens
 - 2" = 500, 1000, 1500, and 2000 lumens
 - 4" = 1000, 1500, 2000, 3000 and 4000 lumens
 - 6" = 1000-6000 lumens
 - 8" = 1000-15,000 lumens
- Standard and shallow heights
- Round or square
- Ceiling mount, pendant mount, aircraft cable, power over cable, wall mount, up/down versions, yoke mount or internal adjustment
- Ceiling mount wet location with covered ceiling, Wall mount wet location listed
 - Optional lens kit for up/down wet locations
- Emergency battery backup
- Remote or integral drivers with multiple options

Multiple installation options



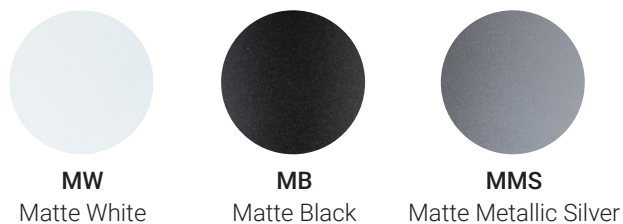
Standard or custom finishes



Reflector finishes



Painted Reflector finishes



Connected solution

WaveLinx PRO can offer **SIGNIFICANT BENEFITS**

- Save time managing and maintaining your system with CORE Lighting App and our system smart tips
- Achieve more with the wireless system that has the broadest offering of indoor, outdoor and industrial controls and fixtures
- Stay secure with unparalleled 7-tier network security features with IEC 62443-4-1 and IEC 62443-4-2 Cybersecurity Certification

Wireless. Code Compliant. Cost Effective.



Lighting fixture with integrated sensor

Highly efficient LED fixtures



WaveLinx Area Controller

Provides centralized coordination of multiple area control options



Wireless Wallstation/Receptacle

Provides customized wireless control of each area



Mobile Applications

Provides personalized, local control from a tablet or smartphone



up to
70%
ENERGY SAVINGS

ASHRAE 90.1 2019 - 70%
IECC 2018 - 55%
T24 2019 - 70%

Color control



VividTune fine tuning of light

Whether you're looking to optimize productivity or simply add dramatic flair, VividTune's tunable white technology allows you to adjust the color temperature from warm white to cool white, creating an environment that fosters productivity and concentration.



dim



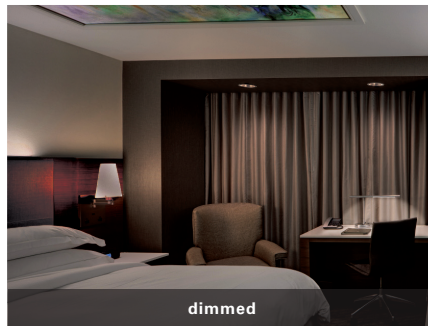
bright

light intensity

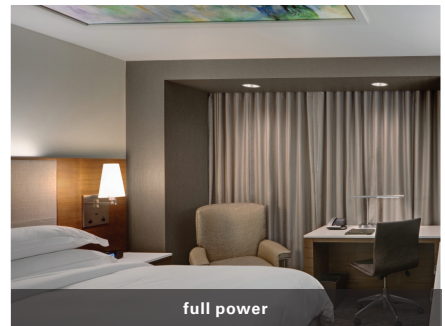


D2W™ Dim-to-warm solution

Bring the warm, dim glow reminiscent of traditional incandescent and halogen sources into your space, for a fraction of the energy consumption, with our dim-to-warm solution.



dimmed



full power

dim-to-warm

Lighting Brands

Ametrix
AtLite
Corelite
Ephesus
Fail-Safe
HALO
HALO Commercial
Invue
iO
Iris
Lumark
Lumière
McGraw-Edison
Metalux
MWS
Neo-Ray
Portfolio
PentaLux - 3D Printed Lighting
RSA
Shaper
Streetworks
Sure-Lites
Telensa

Controls Brands

Greengate
Fifth Light
Intelligent Lighting Controls

**Connected Lighting Systems
and Smart Spaces Platform**

WaveLinx

Photo Credits

Cover Image: Scott D McDonald © Gray City Studios
Page 3: Brian Gassel © Brian Gassel Photography



Cooper Lighting Solutions
1121 Highway 74 South
Peachtree City, GA 30269
P: 770-486-4800
www.cooperlighting.com

Canada Sales
5925 McLaughlin Road
Mississauga, Ontario L5R 1B8
P: 905-501-3000
F: 905-501-3172

© 2023 Cooper Lighting Solutions
All Rights Reserved
Printed in USA
Publication No. BR520052EN
September 12, 2023 12:08 PM

All other trademarks are property
of their respective owners.

Product availability, specifications,
and compliances are subject to
change without notice.