

## DESCRIPTION

The WSN Series is a specification wraparound luminaire featuring energy efficient performance. The luminaire's characteristic clean, low profile design is both appealing and practically functional. The WSN Series utilizes a clear, low brightness, extruded acrylic refractor with injection molded end caps for high performance and good looks.

The efficient and stylish WSN Series is the perfect wraparound for commercial spaces, schools, dormitories, offices and retail areas.

Catalog #		Type
Project		
Comments		Date
Prepared by		

## SPECIFICATION FEATURES

### Construction

Housing die formed code gauge prime cold rolled steel. Six full length ribs for strength. Embossed pad under ballast for better heat dissipation. 3/8" stand off embossments for cooler operation and low density applications. Ballast cover easily removed without tools. Steel end plates with 7/8" KO and light-seal embossment. Couplers for continuous row mounting. Optional decorative end plate available.

### Electrical\*

Ballasts are CBM/ETL Class "P" and are positively secured by mounting bolts. Pressure lock lampholders. UL/CUL listed. Suitable for damp locations.

### Finish

Multistage, iron phosphate pretreatment ensures maximum bonding and rust inhibitor. Lighting grade, baked white enamel finish.

### Frame/Shielding

100% clear full thickness virgin acrylic prismatic refractor/lens. Permanent luminous injection molded end caps. Sides have inside linear prisms and bottom has pyramidal prisms for low brightness control. Lens can be hinged from either side in a lift and shift manner.

### Compliance

Suitable for use in clothes closets when installed in accordance with the NEC 410.16 spacing requirements.

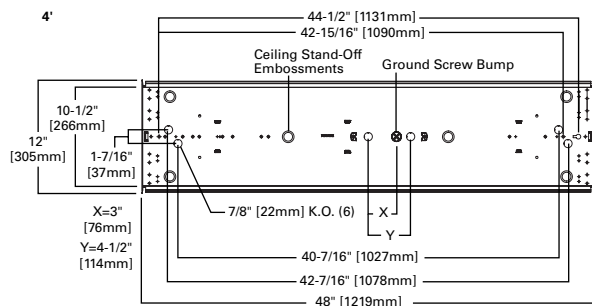


**WSN  
432**

**4' SURFACE  
4 LAMPS**

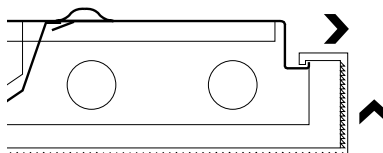
Specification Wrap

## MOUNTING DATA



## LIFT & SHIFT REFRACTOR

Easily Removed. Hinges Either Side  
(Not Recommended For Sloped Ceiling Applications.)



LAMPS CONTAIN MERCURY. DISPOSE ACCORDING TO LOCAL, STATE OR FEDERAL LAWS

**LINEAR DISCONNECT**

Safe and convenient means of disconnecting power.



PS519113EN  
October 16, 2019

ORDERING INFORMATION

SAMPLE NUMBER: WSN-432A-UNV-EB81-U

<b>Tandem</b> (not available) <b>Blank</b> =4' Length	<b>Voltage</b> <sup>(1)</sup> <b>120V</b> =120 Volt <b>277V</b> =277 Volt <b>347V</b> =347 Volt <b>UNV</b> =Universal Voltage 120-277 <sup>(2)</sup>	<b>Ballast Type</b> <sup>(1)</sup> <b>EB8</b> =T8 Electronic Instant Start. Total Harmonic Distortion < 10% No. of Ballast 1, 2 or 3 <b>EB8 /PLUS</b> = T8 Electronic Instant Start. High Ballast Factor >1.13. Total Harmonic Distortion < 20% No. of Ballast 1, 2 or 3 <b>EB8</b> =T8 Electronic Program Rapid Start. Total Harmonic Distortion < 10% No. of Ballast 1, 2 or 3 <b>EB2</b> =T12 Electronic Rapid Start. No. of Ballast 1 or 2	<b>Options</b> (See options & accessories)	<b>Packaging</b> <b>U</b> =Unit Pack
<b>WSN</b> =Series	<b>Options</b> <b>GL</b> =Single Element Fuse <b>GM</b> =Double Element Fuse <b>EL</b> =Emergency Installed <sup>(5)</sup>			
<b>Width</b> <b>Blank</b> =Standard (Wide Body)				
<b>Number of Lamps</b> <b>4</b> lamps (Not Included)				
<b>Wattage (Length)</b> <b>32</b> =32WT8 (48")				
<b>Lens</b> <b>A</b> =Acrylic Refractor/Lens				

ACCESSORIES

(Order Separately)

**SCF**=Fixed Stem Set (Specify Length)  
**SCS**=Swivel Stem Set (Specify Length)  
**SCA**=Adjustable 48" Stem Set  
**A1B/Spacer-U**=Spacer 1-1/2" to 2-1/2" from ceiling (Use 2 per fixture)  
 Lengths Available: 6, 8, 12, 18, 24, 36, 48

(Additional Accessories Available. See Options and Accessories Section.)

**NOTES:** <sup>(1)</sup> Products also available in non-US voltages and frequencies for international markets. <sup>(2)</sup> Not available when specifying emergencies, voltage must be specific. <sup>(3)</sup> Stem mounting not available on 3-lamp fixtures. <sup>(4)</sup> 2 point suspension recommended for 2 and 4-lamp fixtures. <sup>(5)</sup> Steel endplates with 7/8" KO standard for continuous row mounting. <sup>(6)</sup> Please specify required voltage, 120V or 277V.

Specifications & dimensions subject to change without notice. Consult your Cooper Lighting Solutions Representative for availability and ordering information.

SHIPPING DATA

<b>Catalog No.</b>	<b>Wt.</b>
WSN-432A	17 lbs.