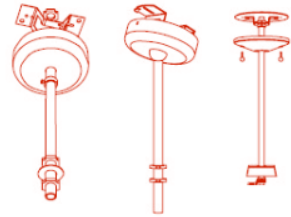
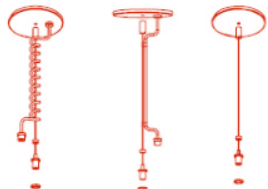




Guide to WSL: Frequently Asked Questions

Rebranded Document
8/19/20

Adjustable Cable (CCA) & Fixed Cable Kits/(CCF)

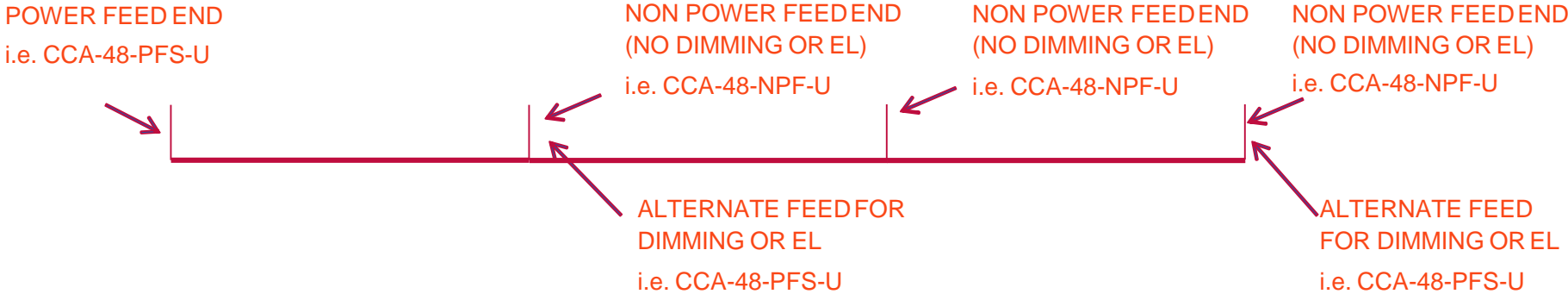
Suspension Sets	Designation		Ordering Information		
Stem Sets  SCF SCS SCA	SCF-XX-B	Fixed Stem Set	<div style="border: 1px solid black; padding: 5px; width: 50px; text-align: center; margin-bottom: 5px;">CCF</div> Type of Kit CCA=Adjustable Cable Kit CCF=Fixed Length Cable Kit	<div style="border: 1px solid black; padding: 5px; width: 50px; text-align: center; margin-bottom: 5px;">18</div> Length of Cable Fixed Length 12=12" long 15=15" long 18=18" long 21=21" long 24=24" long 27=27" long 48=48" long Adjustable 120=120" long 48=48" long	<div style="border: 1px solid black; padding: 5px; width: 50px; text-align: center; margin-bottom: 5px;">NPF</div> Configuration NPF=Non Power Feed PFS=Straight Cord Power PFC=Curly Cord Power Feed
	SCS-XX-B (Deep Canopy, 3/8" stem, 5/8" Outside Diameter)	Swivel Stem Set			
	XX=Length 6", 8", 12", 24", 36", 48", 60", 72"				
	SCA-48-B	Field cutable Stem Set (1/4" IPS Stem, 1/2" O.D.)			
Used with all surface fixtures as stem sets. SCS stems have forty-five degree (45°) swivel, one direction. One set consists of one (1) stem assembly. Minimum of two (2) sets required per fixture. NOTE: Coupler, three-eighths inch (3/8") IPS Pipe Coupler to join lengths. Coupler is standard baked white enamel or special order of black.					
Cable Sets  CCA CCA CCA PFC PFS/ NPF PFSDIM	CCA-XX-PFC-U	CCA=Adjustable Cable (XX=48" or 120")			
	CCA-XX-PFS-U	CCF=Fixed Cable (XX=12", 15", 18", 21", 24", or 27")			
	CCA-XX-NPF-U	PFC=Power Feed, Coil Power Cord			
	CCA-PFSDIM-U	PFS=Power Feed, Straight Power Cord			
	CCF-XX-PFC-U	NPF=Non-Power Feed			
	CCF-XX-PFS-U	PFSDIM=Power Feed, Straight Power Cord, Dimming			
	CCF-XX-NPF-U	NOTE: Coupler, Three-eighths inch (3/8") IPS Pipe Coupler to join lengths. Coupler is standard baked white enamel or special order of black.			
	CCF-PSFDIM-U				

Cable Kit Accessories: Examples

STAND ALONE FIXTURE



IN ROW INSTALLATION



Channel Connector

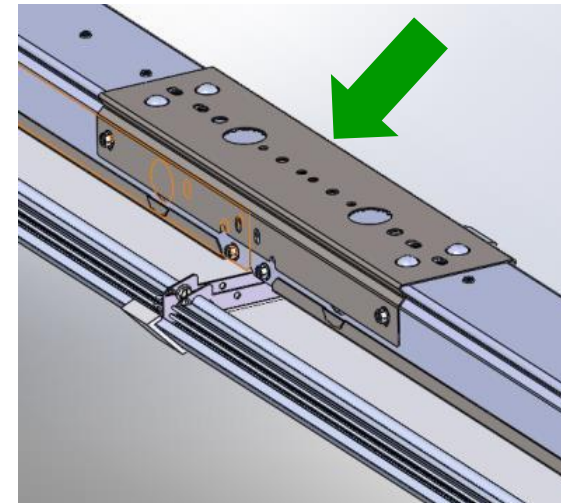
Kit includes (2) two connectors

PN: CLC-WSL-EXT-B=Channel Connector

Using the CLC-WSL-EXT-B eliminates one suspension cable set. Continuous fixture will be suspended from the CLC-WSL-EXT-B by a single cable

For the sensor option, a 1 15/16" clearance is required between fixtures)

*Included in SPC Configuration BOM



Plug-In (PI) Harness

- The Plug-In System provides factory installed branch circuit wiring
- and plug-in connectors for continuous row installation

- PI Example

- Wire Harness to Driver + Dimming:
- 4WSL-LD2-40-SPC-UNV-L840-CD1-PI2BLK-WG6PP-PI10V-U

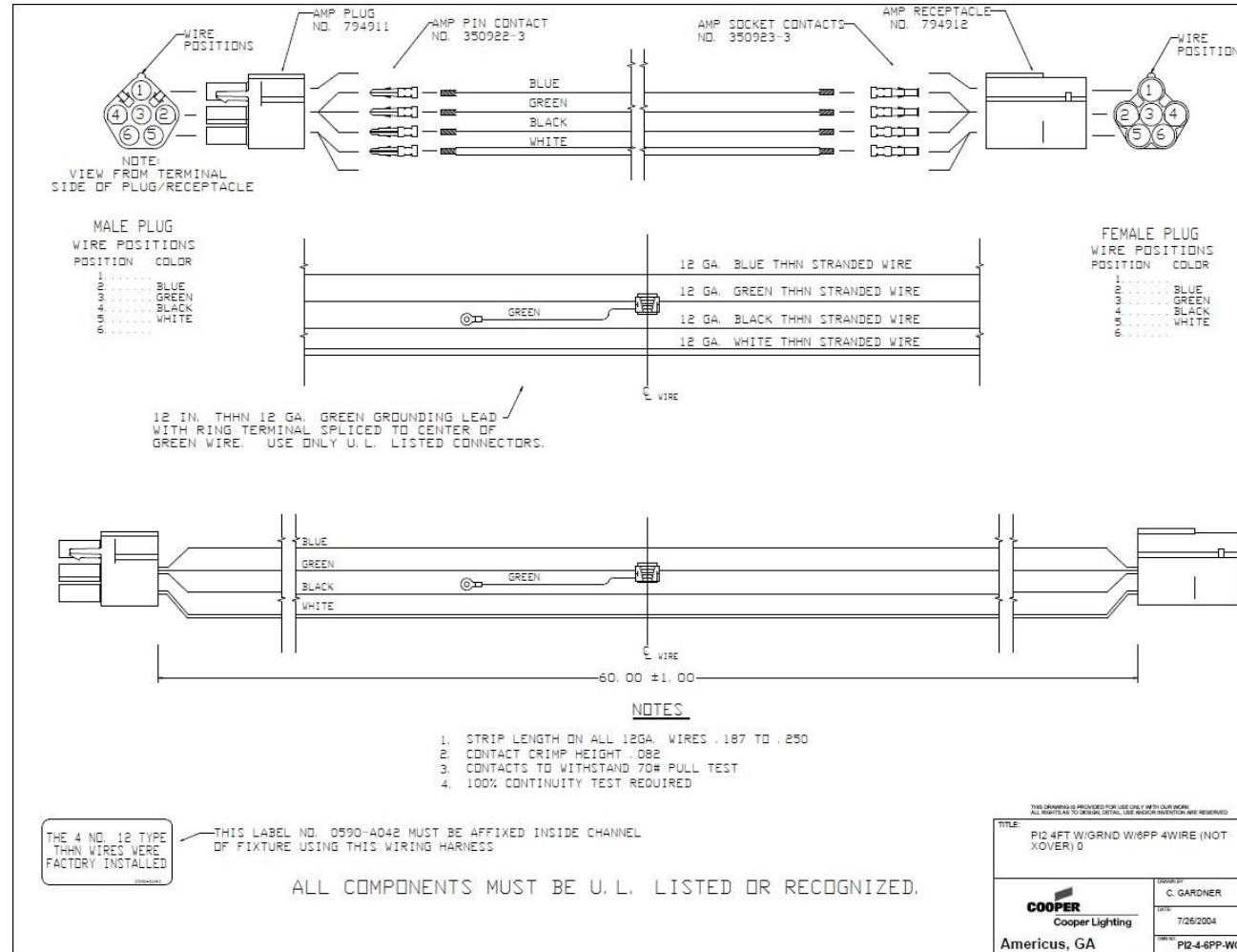
- Wire Harness to driver only: (no dimming)
- 4WSL-LD2-40-SPC-UNV-L840-CD1-PI2BLK-WG6PP-U

- PI1BLK-WG6PP A/C driver leads wired to black and white of harness. Ground lead fastened to channel.

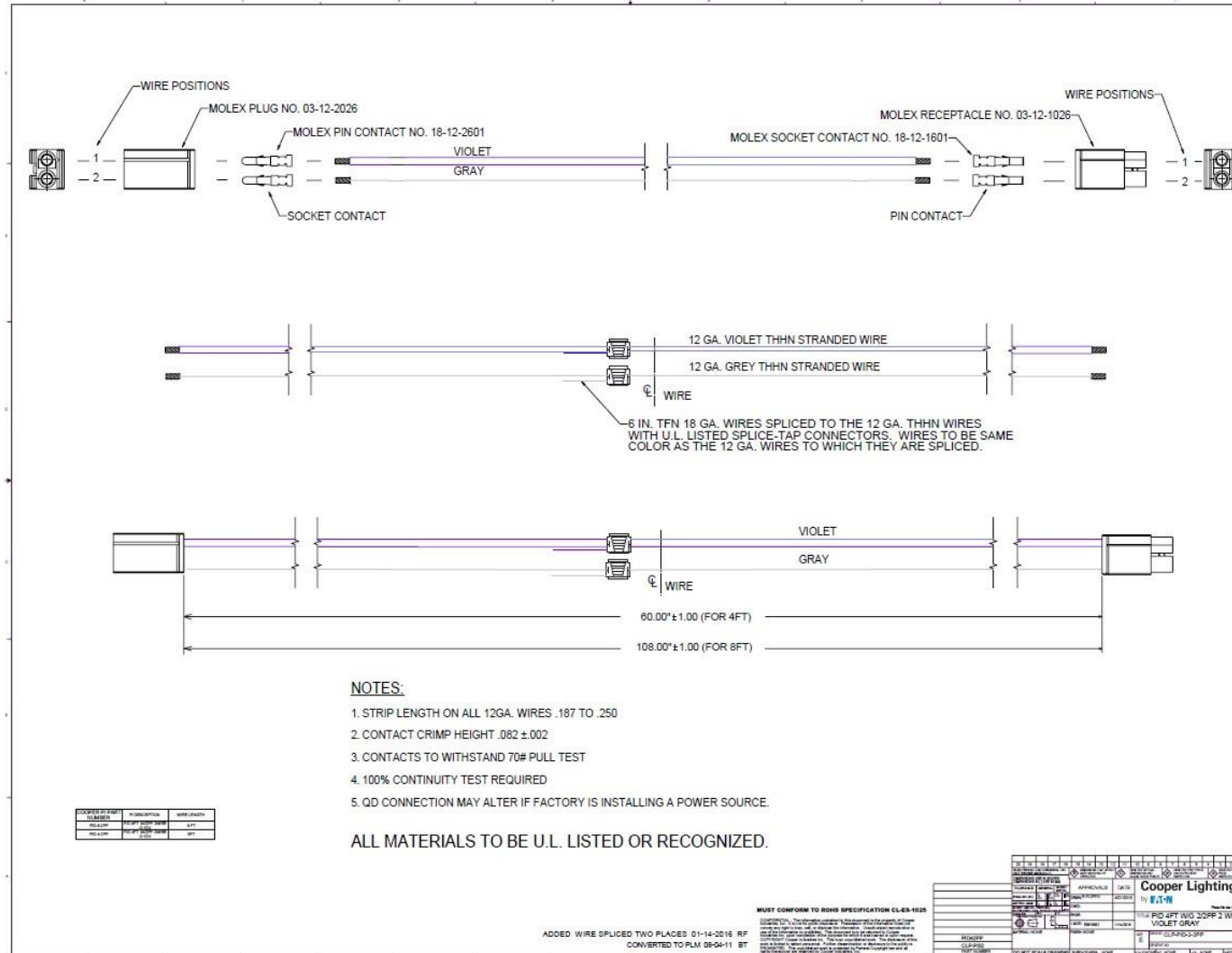
- Customer to verify Code compliance when using harness for dimming circuits

- Link: [Metalux Plug-In Options](#)

Example of a PI Harness (A/C Leads only) for Continuous Row Installation

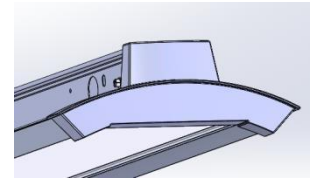


Example of a PI Harness (Dimming Leads only) for Continuous Row Installation

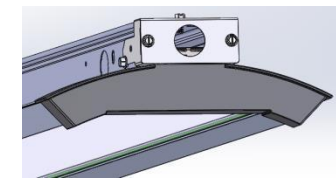


End Feed Connection

Accessory to supply power
on the end of the fixture
(Stand Alone or Row Mounted)
PN : EndFeed-WSL-U



STANDARD



END FEED

Kit includes two end caps with each one including a 1/2" knockout

Sensor option not compatible with this accessory

WSL Installation Alternatives: End Cap Examples



WSL-SRS



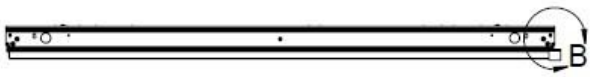
DETAIL A
SCALE 1 : 4



WSL-SRS+SENSOR



DETAIL E
SCALE 1 : 4



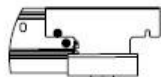
WSL-SRC
(INCLUDES ENDCAP FOR END OF ROW)



DETAIL B
SCALE 1 : 4



WSL-SRC+SENSOR
(INCLUDES ENDCAP FOR END OF ROW)



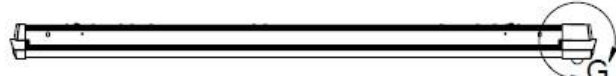
DETAIL F
SCALE 1 : 4



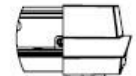
WSL-SPS



DETAIL C
SCALE 1 : 4



WSL-SPS+SENSOR



DETAIL G
SCALE 1 : 4



WSL-SPC
(INCLUDES ENDCAP FOR END OF ROW)



DETAIL D
SCALE 1 : 4



WSL-SPC+SENSOR
(INCLUDES ENDCAP FOR END OF ROW)



DETAIL H
SCALE 1 : 4

