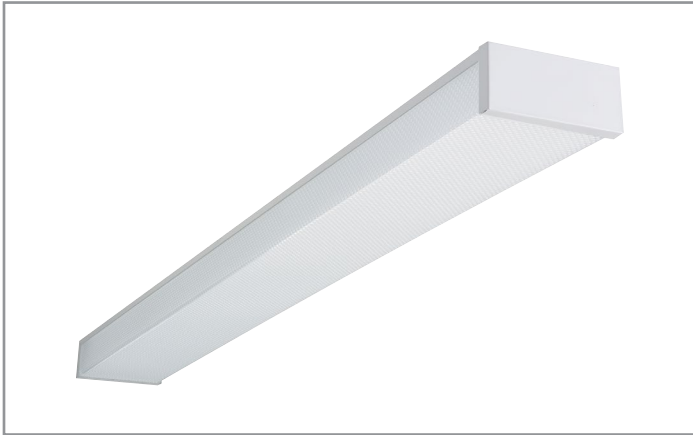


Project		Catalog #		Type	
Prepared by		Notes		Date	



# Metalux

## WP

### 2' and 4' LED 120V Utility Wrap Light

#### Typical Applications

- Commercial • Educational • Residential • Corridor • Stairway
- Multi-Use or Utility Application

#### Product Certification



#### Product Features



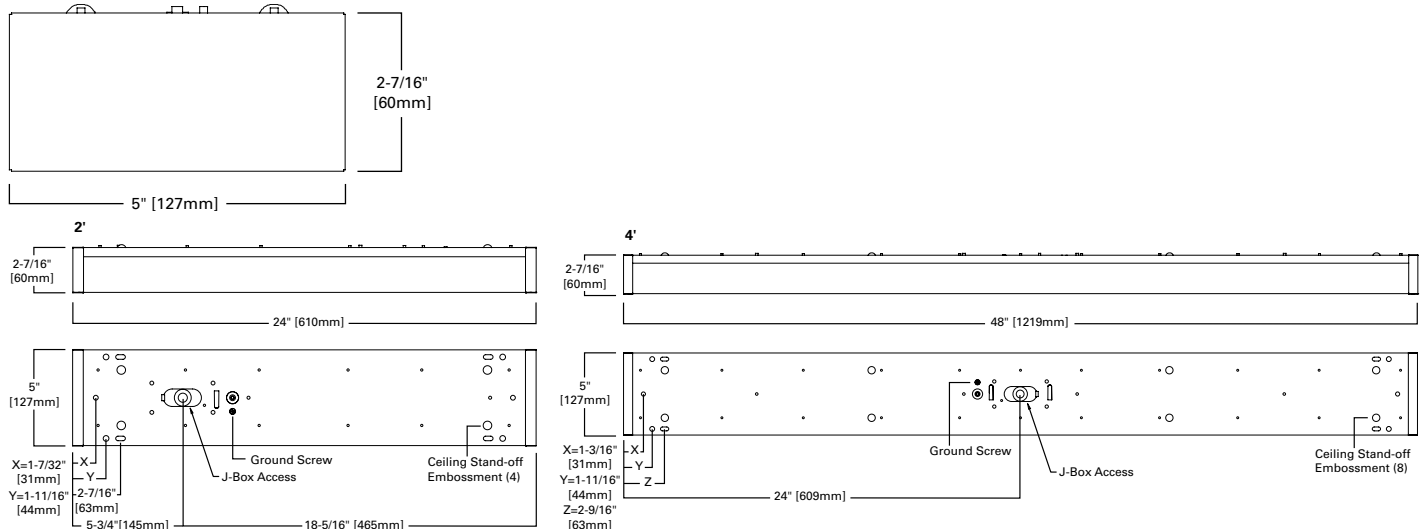
#### Interactive Menu

- Order Information page 2
- Product Warranty

#### Top Product Features

- Ideal for replacing single or two lamp fluorescent wraparounds
- Prismatic LED blend acrylic lens for general light coverage
- Efficacy up to 115 lm/W saves up to 40% over fluorescent wraps
- Low-profile, post-painted die formed channel (48" L x 5" W x 2.5" H)
- Energy-Star compliant

#### Dimensional and Mounting Details



## Product Information

Catalog Number	UPC	CCT (K)	CRI (Min)	Delivered Lumens	Watts	Efficacy (lm/W)	Controls	Input current (A)	
								120V	277V
2WP1540R	080083847181	4000	80	1811	15	121	Non-Dimming	0.13	-
4WP3040R	080083847167	4000	80	3432	31	110	Non-Dimming	0.26	-

### Accessories

Accessories (Order Separately)
<b>HBAYC-CHAIN/SET/U=(2)</b> V-Hook Hangers, 36" Chain Sets w/S-Hooks <sup>(1)</sup> <b>BKYYT18-063-120K=</b> Y Toggle No. 2 at 10 ft. long <sup>(1)</sup> <b>SCF-12-B=12'</b> Fixed Stem Set (specify if another length needed) <sup>(1)</sup>
<b>Notes</b> (1) Separate junction box (by others) required for power on all suspended options.

## Energy and Performance Data

### Load Data

	2'	4'
PF	0.99	0.99
THD%	< 10	< 10
Weight	1.0	4.0
Low Temp Start	-20C	-20C

### Shipping Data

Catalog Base	Wt.	Units per Pallet
2WP	1.1 lbs.	96
4WP	4.5 lbs.	72

## Product Specifications

### Construction

- Die formed post painted white steel housing and end plates
- Available sizes: 2ft and 4ft
- Impact resistant, UV-stabilized acrylic prismatic lens
- Tool-less lens retention design for easy maintenance

### Electrical

- 120V Class B non-dimming driver
- L70 at 50,000 rated life-hours (TM-21), or greater than 24 years at 6 hrs/day
- LEDs are 4000K CCT and 80 CRI minimum

### Shielding

- Classic wrap-around rectangular lens profile
- Standard LED blended prismatic for wide area coverage and even illumination
- See acrylic cleaning and limitations on use

### Installation

- Surface (wall or ceiling) mount capable via junction box
- Suspension mount capable using standard V-hook or Y-toggle mounting kits
- Quick-access J-box plate allows for fast install and inspection
- Rated for installs in closet storage areas, as defined in NEC section 410.16

### Compliance

- UL/cUL listed for damp location
- Rated for 0F (-20C) to 104F (40C) ambient operating temperatures
- RoHS compliant
- Suitable for use in closet storage spaces when installed in accordance with NFPA-70 and NEC 410.16 spacing requirements
- LED complies with IESNA LM-79 and LM-80
- ENERGY STAR® listed, reference database for current listings

### Warranty

- Five year warranty

## Features and Benefits

	Feature	Benefit
Performance	Up to 115 lm/W, 50K life hours at L70	Save over 40% energy over existing LFL strips
	Energy Star certification	Eligible for energy rebate
	5-Year Warranty	Certified and guaranteed performance
	Meets NEC Section 410.16 code	Permitted for use in closet or small storage spaces
Construction	Full length, standard width post painted steel channel	No painting required. Ideal for LFL retrofit
	Prismatic Acrylic Lens Optic	One for one replacement of 2-lamp LFL wraparounds
	Surface or chain mount capability	Design flexibility / simplified installation