

FOR NON-U.S. MARKETS ONLY

TYPE:

CATALOG#:

METALUX®

DESCRIPTION

The VTEP Series is an energy efficient industrial Vaportite fixture that features rugged and durable construction for export markets. This Vaportite series is suitable for interior and exterior applications and can be surface or suspension mounted.

APPLICATION

The VTEP Series has been designed for maximum operation in commercial, institutional and industrial environments where weathering, high temperature, humidity and dust or corrosive fumes are present.

SPECIFICATION FEATURES

A... Construction

Housing made of corrosion, moisture, flame resisting F.R.P. (Fiberglass Reinforced Polyester).

B... Electrical

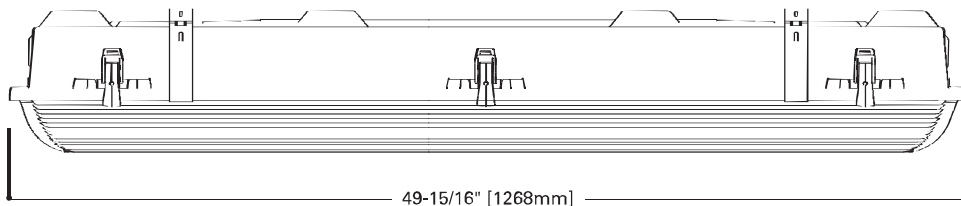
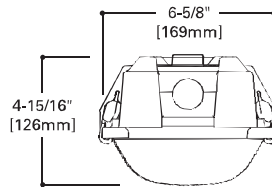
Available in a variety of ballasts including emergency battery packs. Gear tray suspendable for easy installation. Through wiring capability.

C... Shielding

Injection acrylic diffuser. Standard Clear (CL) Options: Frosted Lens (FL)- acrylic Impact Lens (DR)- plexiglass

D... Certifications

NOM certified. IP65 IP67 option



VTEP132
140
148
232
240
248

4' INDUSTRIAL
1 OR 2 LAMPS

Industrial/Vaportite

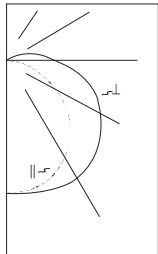
ENERGY DATA

Input Watts:
EB Ballast & STD Lamps
132 (30)
140 (38)
148 (46)
232 (61)
240 (72)
248 (74)

ES Ballast & STD Lamps
132 (37)
140 (50)
148 (60)
232 (71)
240 (86)
248 (102)

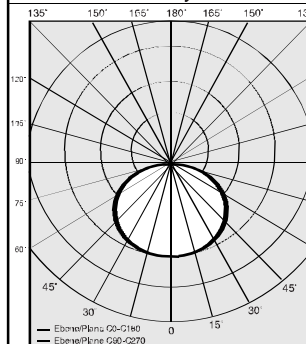
STD Ballast & STD Lamps
120 (32)

PHOTOMETRICS



VT2-232
Electronic Ballast
F32T8/35K Lamps
2850 Lumens
Spacing criterion:
(H) 1.3 x mounting height, (L) 1.5 x mounting height
Efficiency 78.9%
Test Report #127P106
LER = FI-73
Yearly Cost of 1000 lumens, 3000 hrs at .08 KWH = \$3.29

Luminous Intensity Distribution



Quality Class	Valid for nominal illuminance (Lx)						
	3000	2000	1000	500	≤ 250	≤ 250	
1				2000	1000	500	≤ 250
2				2000	1000	500	≤ 250
3				2000	1000	500	≤ 250

ORDERING INFORMATION

SAMPLE NUMBER: VTEP-232

MEX	VTEP					Options (add as suffix)
NOMS Labeling	Series	Number of Lamps 1 or 2 lamps (Not included)	Lens Options CL=Clear Acrylic FL=Frosted Acrylic DR=Impact Resistant Plexiglass	Voltage 120=120V 277=277V UNV=120V-277V	Ballast Type Standard Magnetic Ballast Leave Blank (Biax & LTS) LE3 = Energy Saving Magnetic Ballast @ LEOC8 = Energy Saving Magnetic Ballast (T-8 Lamp Only) EB = Generic Electronic Ballast No. of Ballasts 1 or 2 Lamp Size 2=T12 8=T8 <small>(For Specific Electronic Ballast Specify Brand and Catalog Number)</small>	Options GL=Internal Single Element Fusing GM=Dual Element Fusing EL4=Emergency Lighting self-contained. RIF1=Radio Interference Suppressor
Wattage (Length) 40=40W (48") 32=32W T8 (48") 48=39W(48")						

SHIPPING INFORMATION

Catalog No.	Cube	Wt.
1-Lamp Magnetic	.80	7 lbs.
1-Lamp Electronic	.80	6 lbs.
2-Lamp Magnetic	1.01	9.82 lbs.
2-Lamp Electronic	1.01	11.1 lbs.