

Lighting solutions

Industrial LED luminaires





Industrial LED lighting solutions

Metalux ambient lighting solutions offer a complete family of LED lighting and controls products for a wide variety of applications. Industrial and commercial properties are comprised of an extensive range of individual spaces that require a unique combination of luminaires and lighting controls to meet specific lighting needs. Whether lighting the complex environment of a manufacturing facility or the customer-centric experience at your local grocery store, Metalux offers a complete family of innovative and energy saving LED solutions for your next project.

Innovation you can rely on.
Connections you can build on.

Bottom Line savings. Customer satisfaction.

Delivering the most innovative and sustainable lighting and controls products, Metalux lighting solutions have a trusted reputation by providing a complete offering of versatile ambient led luminaires designed with advanced optical performance, engineered for energy savings and constructed to offer long-lasting durability. Our energy efficient products use half the energy of traditional light sources and are designed for easy installation with almost no maintenance.



Warehouse /
Distribution
p. 3

Manufacturing
p. 5

Gymnasiums /
Athletic center
p. 7

Food processing
p. 9

Big box retail
p. 11

Grocery
p. 13

Warehouse / Distribution

The Metalux product line of industrial LED fixtures is designed to enhance safety and productivity in your warehouse and distribution facility while also reducing your energy expense. Metalux's industrial LED solutions deliver highly uniform light and a long life to dramatically reduce the need to perform maintenance which requires additional labor costs and safety concerns.

fact

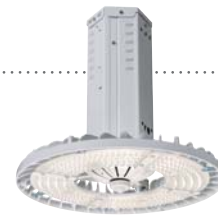
Adequate light in warehouse and distribution areas can improve mood and energize workers. And, better lighting will enhance the quality of the workplace – possibly reducing absenteeism and improving production output!



Products



Steeler LED



Linear Bay



LBLED



SNLED



HBLED



VHLED



Manufacturing

Manufacturing facilities require systems that can perform continuously and sometimes under harsh conditions. Metalux LED industrial products are designed to support a safe and productive manufacturing environment while providing the flexibility to meet today's regulatory and environmental challenges.

fact

In the case of round-the-clock work, fatigue from irregular sleep habits can be reduced by a lighting solution that delivers the appropriate amount of light, adequate color and light direction at the correct time to benefit shift workers.



Products



Steeler LED



Linear Bay



HBLED



XHB



VT4 LED



VHBLED



Gymnasium

Wide open, high ceiling areas that are common to gymnasiums and multi-purpose facilities present a unique challenge for lighting systems. The lighting fixtures and their application can be the difference in a poorly lit and energy hungry facility; or an energy efficient but uniformly lit space. Metalux LED industrial fixtures are designed to properly light the space with the fewest number of fixtures required, while being rugged enough to withstand impact from mobile sporting equipment.

fact Glare-free light is important during sports games where players look up frequently to track a ball. High-grade lighting lenses improve visual comfort for athletes and reduce glare – improving player's performance.



Products



HBLED



Linear Bay



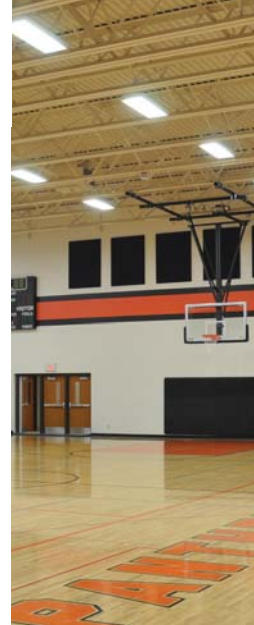
Steeler LED



TBLED



VHLED



Food processing

Visibility, sanitation and temperature control are all critical considerations in a food processing facility. Metalux industry-leading Vaportite LED fixtures deliver exceptional lumen levels, enclosed lighting elements and a significantly reduced heat output when compared to non-LED fixtures.

fact

Uniform lighting in a food processing facility allows workers to see visual cues from a distance while providing sufficient light to perform their specific tasks in a safe, efficient and productive manner.



Products



VT4 LED



VT2 LED



Altus



XHB



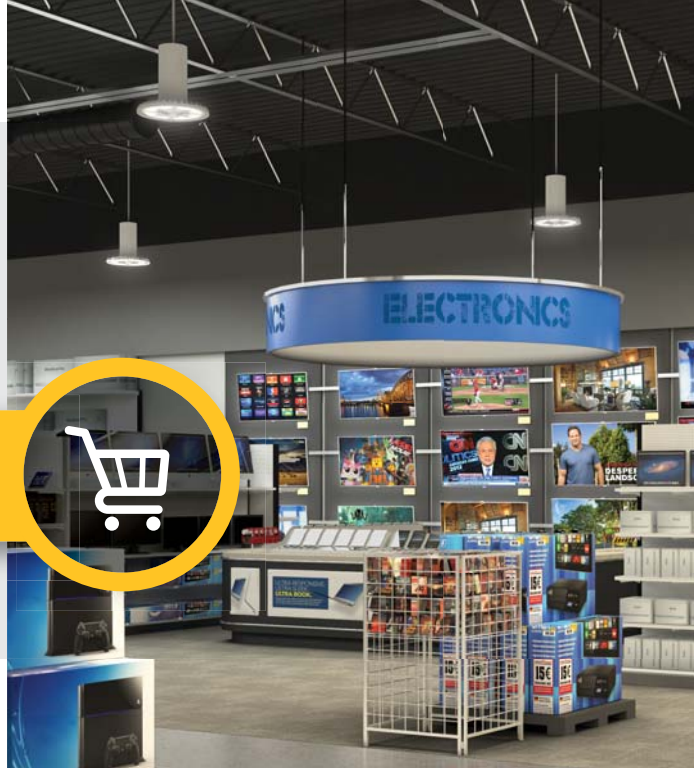
TBLED



Big box retail

Big box retail applications require light distribution and lumen output similar to high bay applications while enhancing the appeal of the products being sold. The Metalux product line helps to maximize the customer experience by providing optimal visual comfort while showcasing the merchandise within the space.

fact Good lighting design accounts for day/evening cycles by reducing ambient light in the evening- particularly near store entrances. As a result, customers will find it more comfortable for eyes to adjust gradually when visiting the store.



Products



SkyBar Single



SkyBar



Steeler LED



Linear Bay



TBLED



VHBLD



Grocery

Retail spaces with lower ceiling heights and higher architectural appeal require fixtures that provide the proper balance of form and function. Whether illuminating aisle ways and shelves or highlighting the vibrant colors in the produce department, Metalux products deliver a variety of lumen packages and color temperature options to highlight merchandise while enhancing the overall customer experience.

fact

A well-lit store welcomes customers and allows them to easily locate merchandise. It makes them feel comfortable – encouraging them to stay and browse longer, which is key to them buying more.



Products



SkyBar Single



SkyBar



Linear Bay



SNLED

Optional advanced technology

Integrated sensor technology

INtuitive, INtelligent, INtegrated.

Combining the control within the light fixture reduces installation and design time; while meeting energy codes.



LumaWatt Pro

Connected Lighting
Wireless System

Powered by
enlighted

LumaWatt Pro powered by Enlighted is an integrated system of luminaires, digital sensors, and application-based software for any size project.

Our Lighting Product Lines

Halo	Shaper
Halo Commercial	io
Portfolio	Lumark
Iris	McGraw-Edison
RSA	Invue
Metalux	Lumière
Corelite	Streetworks
Neo-Ray	AtLite
Fail-Safe	Sure-Lites
MWS	
Ametrix	

Our Controls Product Lines

Greengate
iLumin
Zero 88
Fifth Light Technology
iLight (International Only)

Eaton

1121 Highway 74 South
Peachtree City, GA 30269
P: 770-486-4800
www.eaton.com/lighting

Canada Sales

5925 McLaughlin Road
Mississauga, Ontario L5R 1B8
P: 905-501-3000
F: 905-501-3172

© 2017 Eaton
All Rights Reserved
Printed in USA
Publication No. BR507006EN
February 17, 2017

Eaton is a registered trademark.

All other trademarks are property
of their respective owners.

Product availability, specifications,
and compliances are subject to
change without notice.



Powering Business Worldwide