



Horizon™

RECESSED WALL WASH

131 131 131 131 131 131 131 131 131

146 146 146 146 146 146 146 146 146

138 138 138 138 138 138 138 138 138

124 125 126 126 126 126 126 126 126

119 120 121 121 121 121 121 121 121

115 116 117 117 117 117 117 117 117

109 110 111 111 112 112 112 112 112

108 107 108 108 109 109 109 109 109

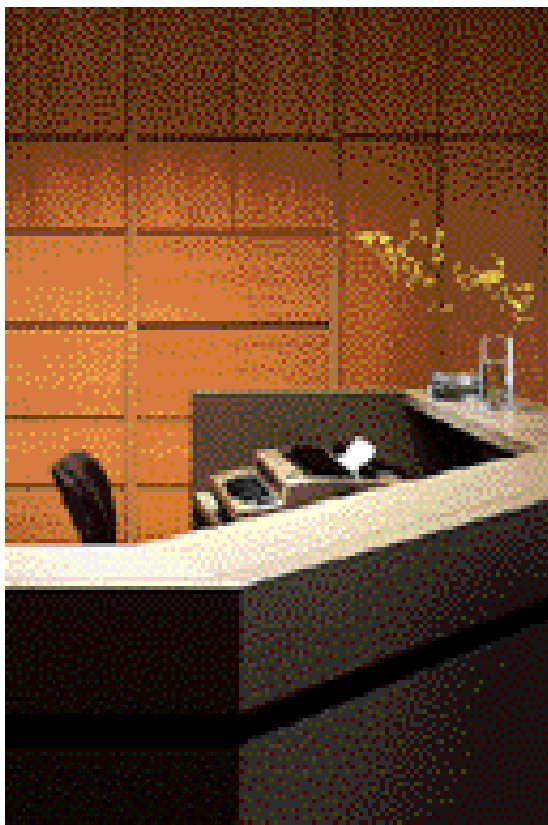
104 105 106 106 106 106 106 106 106

Horizon

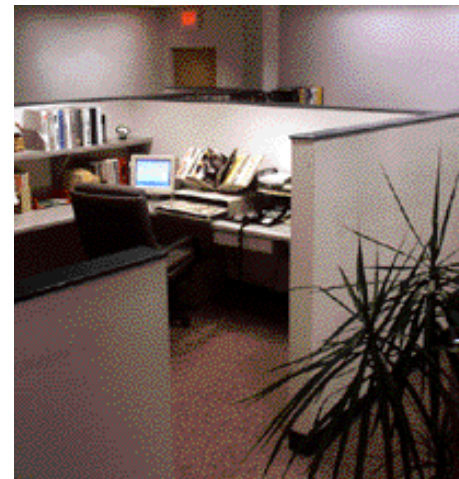
RECESSED WALL WASH

The Metalux Horizon Wall Wash Series provides the most uniform wall washing in the industry and is ideal for a wide variety of commercial applications. The unique optical design of Horizon provides superior horizontal and vertical uniformity with higher vertical throw than any competitor.

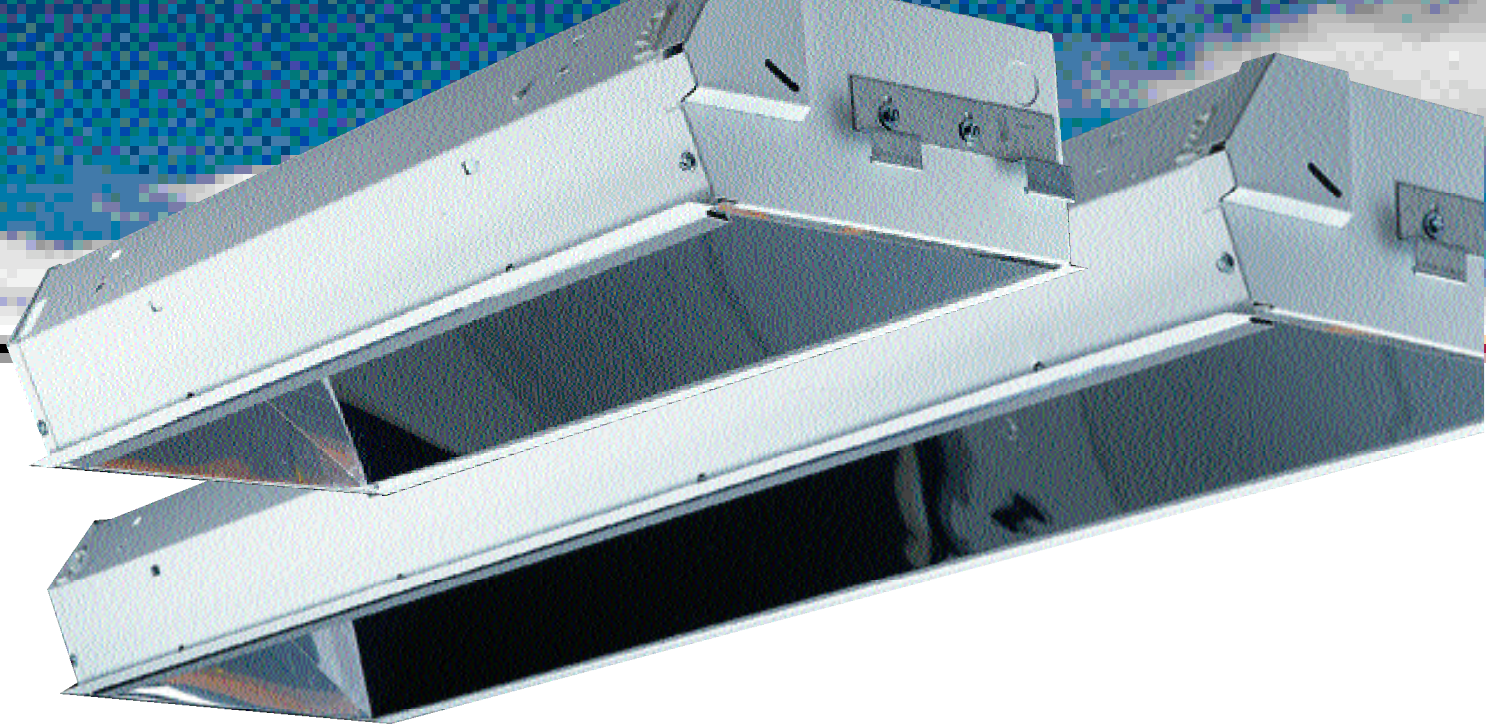
Horizon's uniform wall washing dramatically improves the spaciousness and pleasantness of any space. This articulation of illumination in the spacial envelope has been proven to have a very positive effect on reception in such applications as retail merchandising and open offices. In spaces where the use of typical recessed luminaires results in dark upper vertical surfaces, Horizon can be the solution. Horizon's illumination is precisely directed into these areas to eliminate the "Cave Effect", an objectionable side-effect of cutoff luminaires.



The Horizon Series is available in 2' and 4' housing lengths with a variety of lamp types including Biaxial, T8, T5 and T5HO. Horizon's modern, attractive styling features a small and discreet aperture with all components recessed above the ceiling plane for a clean, architectural appearance. The lamp is completely shielded from view at all standard viewing angles. Two high performance aesthetically pleasing optical accessories are also available. The Thin White Baffle provides additional lateral lamp shielding and the Clear Acrylic Lens is ideal for food service applications.



Specify the best Recessed Wall Wash luminaire in the industry, the Horizon Series from Metalux.



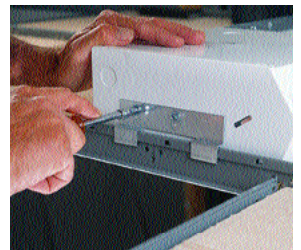
Horizon provides the best, most uniform wall washing in the industry with the most diverse product offering.

Available in both 2' and 4' housings, including 40W, 50W and 55W Biaxial and 1 and 2-lamp T8, T5 and T5HO lamp types.

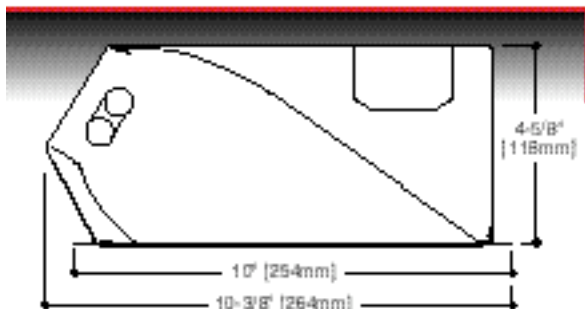
High precision, computer controlled component forming for outstanding optical control and craftsmanship. Low iridescent, low grain anodized aluminum reflector assembly with upper "scoop" and lower "kick" elements available in specular and semi-specular finishes.

T5 and T5HO Lamp Technology - Reduced lamp size provides increased optical precision energy efficiency, color rendering and light output (HO).

Horizon incorporates several ease of maintenance features. Adjustable grid-lock brackets are factory installed and accommodate various ceiling systems. Optional optical accessories are easily installed into standard, unmodified fixtures. Ballasts can be accessed from below the ceiling without tools or from above by means of the contractor friendly top ballast access plate.



The optical design of the Metalux Horizon Recessed Wall Wash provides superior horizontal and vertical uniformity and higher vertical throw than any competitor.

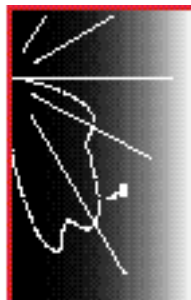


RWW-228T5MI

Electronic Ballast
F28T5/835 Lamps
2900 Lumens
Efficiency 71.7%
Test Report #167P118

CANDELA

| Angle | Along II | 45° | Across ⊥ |
|-------|----------|------|----------|
| 0 | 405 | 405 | 405 |
| 5 | 947 | 864 | 405 |
| 10 | 1720 | 1364 | 402 |
| 15 | 2689 | 2083 | 397 |
| 20 | 3174 | 2661 | 389 |
| 25 | 2770 | 2997 | 374 |
| 30 | 2909 | 2822 | 355 |
| 35 | 2818 | 2565 | 330 |
| 40 | 2359 | 2615 | 303 |
| 45 | 1944 | 2369 | 276 |
| 50 | 1829 | 1943 | 244 |
| 55 | 1768 | 1580 | 210 |
| 60 | 1702 | 1426 | 175 |
| 65 | 1560 | 1326 | 141 |
| 70 | 1182 | 1159 | 110 |
| 75 | 767 | 835 | 78 |
| 80 | 447 | 450 | 50 |
| 85 | 364 | 274 | 12 |
| 90 | 0 | 0 | 0 |



RWW-1BX40MI

Electronic Ballast
F40BX/835 Lamps
3150 Lumens
Efficiency 80.4%
Test Report #167P117

CANDELA

| Angle | Along II | 45° | Across ⊥ |
|-------|----------|------|----------|
| 0 | 196 | 196 | 196 |
| 5 | 430 | 376 | 197 |
| 10 | 1051 | 674 | 195 |
| 15 | 1671 | 1245 | 192 |
| 20 | 1877 | 1637 | 187 |
| 25 | 1898 | 1753 | 182 |
| 30 | 1844 | 1772 | 174 |
| 35 | 1675 | 1713 | 164 |
| 40 | 1290 | 1624 | 154 |
| 45 | 1148 | 1380 | 145 |
| 50 | 1122 | 1056 | 133 |
| 55 | 1104 | 920 | 121 |
| 60 | 1074 | 851 | 109 |
| 65 | 1040 | 798 | 98 |
| 70 | 882 | 728 | 93 |
| 75 | 496 | 591 | 88 |
| 80 | 271 | 261 | 71 |
| 85 | 242 | 157 | 24 |
| 90 | 0 | 0 | 0 |

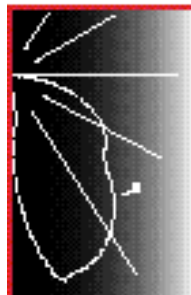


RWW-232MI

Electronic Ballast
F32T8/835 Lamps
2800 Lumens
Efficiency 69.7%
Test Report #167P115

CANDELA

| Angle | Along II | 45° | Across ⊥ |
|-------|----------|------|----------|
| 0 | 943 | 943 | 943 |
| 5 | 1435 | 1319 | 940 |
| 10 | 2087 | 1803 | 930 |
| 15 | 2601 | 2227 | 910 |
| 20 | 2656 | 2529 | 880 |
| 25 | 2595 | 2566 | 839 |
| 30 | 2479 | 2436 | 791 |
| 35 | 2332 | 2317 | 736 |
| 40 | 2136 | 2155 | 675 |
| 45 | 1817 | 1961 | 607 |
| 50 | 1667 | 1737 | 532 |
| 55 | 1554 | 1442 | 454 |
| 60 | 1416 | 1258 | 379 |
| 65 | 1197 | 1111 | 305 |
| 70 | 938 | 912 | 234 |
| 75 | 663 | 657 | 166 |
| 80 | 422 | 406 | 110 |
| 85 | 184 | 166 | 59 |
| 90 | 0 | 0 | 0 |



ORDERING INFORMATION

SAMPLE NUMBER: **RWW-1BX40MI**

| | | | | | | |
|--|---|---|---|---|---|--------------------------------|
| RWW | 1 | BX40 | MI | | | Options (add as suffix) |
| Series | <p>Number of Lamps (Not included) 1= 1 Lamp 2= 2 Lamp (T8, T5 and T5HO Only) T 1=4' Fixture with one</p> <p>Wattage (Length) 14T5=14W T5 (24") 24T5=24W T5 HO (24") 28T5=28W T5 (48") 54T5=54W T5 HO (48") 17= 17WT8 (24") 32=32W T8 BX40=40W Biaxial (24") BX50=50W Biaxial (24") BX55=55W Biaxial (24")</p> | <p>Reflector Finish MI= Specular Low Iridescence (Standard) I= Semi-Specular Low Iridescence</p> | <p>Voltage 120=120V 277=277V</p> | <p>Ballast Type Standard Magnetic Ballast Leave Blank (40W Biax Only) LEOC8=Energy Saving Magnetic Ballast (T8 Lamp Only) EB = Generic Electronic Ballast No. of Ballasts 1 Lamp Size 8=T8 5=Biax T=T5 Linear (For Specific Electronic Ballast Specify Brand and Catalog Number)</p> | <p>Options TBW2=Thin White Baffle Accessory (2' Fixture) TBW4=Thin White Baffle Accessory (4' Fixture) CAL2=Clear Acrylic Lens (2' Fixture) CAL4=Clear Acrylic Lens (4' Fixture) GL=Internal Single Element Fusing GM=Dual Element Fusing RIF1=Radio Interference Suppressor REP=Approved by City of New York Bureau of Electrical Control (Additional options available. See Accessory Section)</p> | |
| <p>NOTE: See option/accessories sections for additional detailed product data. Specifications and Dimensions subject to change without notice. *Field installed accessory ships in separate carton. *Electronic Ballast Only.</p> | | | | | | |







CUSTOMER FIRST CENTER

1121 HIGHWAY 74 SOUTH
PEACHTREE CITY, GEORGIA 30269
770 486 4800
FAX 770 486 4801

Cooper Lighting

400 Busse Road
Elk Grove Village, Illinois 60007

Domestic Facilities

Cranbury, New Jersey
Elk Grove Village, Illinois
Grand Prairie, Texas
Ontario, California
Peachtree City, Georgia

International Sales, USA

Cooper Lighting
400 Busse Road
Elk Grove Village, Illinois 60007
847 956 8400
Fax 847 806 3860

Canada

Cooper Lighting
5925 McLaughlin Road
Mississauga, Ontario L5R 1B8
905 507 4000
Fax 905 568 7049

4121-23B St. NE
Calgary, Alberta T2E 7V9
403 250 7686
Fax 403 291 3581

1220 Bergar Street
Chomedey, Laval P.Q. H7L 5A2
450 975 4500
Fax 450 975 2695

Cooper Lighting, Inc.
All rights reserved
Printed in USA

The Cooper Lighting Family

- Halo**
- Portfolio**
- Metalux**
- Neo-Ray**
- Lumark**
- McGraw-Edison**
- Sure-Lites**
- Fail-Safe**
- Iris**
- Lumière**
- Optiance**
- MWS**



Visit our website at www.cooperlighting.com



ADF990779