

**Accord LED**  
Recessed LED luminaire

**Metalux**





## Accord LED

The Accord™ LED Series combines optimal illumination design and contemporary styling with the technology of Cooper Lighting Solutions' linear LED platform. Accord's high performance LED system with advanced light distribution and attractive appearance delivers unprecedented energy savings, comfort and aesthetics. And it simplifies installation and maintenance with a tool-less design.



## Accord LED Connected Lighting Systems

The Accord is designed to support integrated sensor systems, providing code compliance, installation and energy savings while unlocking the potential of connected lighting systems.

Integrated sensor systems reduce planning because the lighting design is the controls design. With sensors factory-installed in every fixture, the layout of the Accord matches the sensor coverage. The Accord deploys Cooper Lighting Solutions's connected lighting integrated system options, allowing the right light for the right reasons.



### SVPD Integrated Sensor System



Adjustable occupancy sensing and daylight dimming control

Out-of-the-box functionality with no configuration required

Optional handheld remote for field adjustments and personal control

Low-bay and high-bay detection pattern options for various ceiling heights up to 30 feet

### Enlighted Wireless Connected Lighting System



Configurable dimming, occupancy, light, temperature and power use sensing

Enterprise-class wireless networking with fully addressable settings

Powerful software for energy management and Internet of Things (IoT) data capture and analytics

Low bay detection pattern covers low- and high-ceiling applications up to 20 feet

## Construction

<b>Accord LED</b>
Recessed: 2' x 2', 2' x 4' and 1' x 4'
Depth: 3.25"
Sustainable materials
cULus damp location / IC Rated / ROHS compliant
Five-year warranty

## Performance

<b>Accord LED</b>
High-performance efficacy up to 127 lumens per watt
Energy savings in excess of 60% compared to traditional fluorescent troffers
Three Correlated Color Temperatures (3000K, 3500K, 4000K) at typical 85 CRI
1' x 4': L89 @ 60,000 hrs.; 2' x 2': L87 @ 60,000 hrs.; 2' x 4': L89 @ 60,000 hrs.
Binning: Per ANSI, 3-step MacAdam ellipse

## Options

<b>Accord LED</b>
Four stocked lumen packages in two CCTs <ul style="list-style-type: none"> <li>- 2' x 2': 2300 and 3400; 2' x 4': 4400 and 5500</li> <li>- Several additional lumen packages offered as MTO</li> </ul>
Universal (120V/277V) or 347V
Emergency – EL (700), EL10W (10 watts) and EL14 (1400)
Surface mount kits
Air vented version
Flex wiring configurations
Chicago plenum rated version



# Energy data

## 1' x 4'

Stock or MTO*	Catalog logic (Curved)	Delivered lumens	Watts	Efficacy (lm/W)
MTO	14AC-LD5-20-UNV-L830-CD1-U	1909	16.3	117
MTO	14AC-LD5-20-UNV-L835-CD1-U	2028	16.3	124
MTO	14AC-LD5-20-UNV-L840-CD1-U	2069	16.3	127
MTO	14AC-LD5-25-UNV-L830-CD1-U	2357	20.5	115
MTO	14AC-LD5-25-UNV-L835-CD1-U	2504	20.5	122
MTO	14AC-LD5-25-UNV-L840-CD1-U	2554	20.5	125
MTO	14AC-LD5-29-UNV-L830-CD1-U	2747	24.5	112
MTO	14AC-LD5-29-UNV-L835-CD1-U	2918	24.5	119
MTO	14AC-LD5-29-UNV-L840-CD1-U	2976	24.5	121
MTO	14AC-LD5-35-UNV-L830-CD1-U	3379	31.5	107
MTO	14AC-LD5-35-UNV-L835-CD1-U	3590	31.5	114
MTO	14AC-LD5-35-UNV-L840-CD1-U	3662	31.5	116
MTO	14AC-LD5-39-UNV-L830-CD1-U	3727	35.7	104
MTO	14AC-LD5-39-UNV-L835-CD1-U	3959	35.7	111
MTO	14AC-LD5-39-UNV-L840-CD1-U	4038	35.7	113
MTO	14AC-LD5-44-UNV-L830-CD1-U	4139	41.1	101
MTO	14AC-LD5-44-UNV-L835-CD1-U	4397	41.1	107
MTO	14AC-LD5-44-UNV-L840-CD1-U	4485	41.1	109

## 2' x 2'

MTO	22AC-LD5-20-UNV-L830-CD1-U	1997	16.7	119
MTO	22AC-LD5-20-UNV-L835-CD1-U	2076	16.7	124
MTO	22AC-LD5-20-UNV-L840-CD1-U	2118	16.7	127
MTO	22AC-LD5-23-UNV-L830-CD1-U	2301	19.5	118
Stock	22AC-LD5-23-UNV-L835-CD1-U	2392	19.5	123
Stock	22AC-LD5-23-UNV-L840-CD1-U	2440	19.5	125
MTO	22AC-LD5-27-UNV-L830-CD1-U	2599	22.4	116
MTO	22AC-LD5-27-UNV-L835-CD1-U	2702	22.4	121
MTO	22AC-LD5-27-UNV-L840-CD1-U	2756	22.4	123
MTO	22AC-LD5-34-UNV-L830-CD1-U	3334	30.2	110
Stock	22AC-LD5-34-UNV-L835-CD1-U	3466	30.2	115
Stock	22AC-LD5-34-UNV-L840-CD1-U	3535	30.2	117
MTO	22AC-LD5-38-UNV-L830-CD1-U	3681	34.3	107
MTO	22AC-LD5-38-UNV-L835-CD1-U	3827	34.3	112

## 2' x 2'

Stock or MTO*	Catalog logic (Curved)	Delivered lumens	Watts	Efficacy (lm/W)
MTO	22AC-LD5-38-UNV-L840-CD1-U	3904	34.3	114
MTO	22AC-LD5-44-UNV-L830-CD1-U	4270	42.3	101
MTO	22AC-LD5-44-UNV-L835-CD1-U	4439	42.3	105
MTO	22AC-LD5-44-UNV-L840-CD1-U	4528	42.3	107

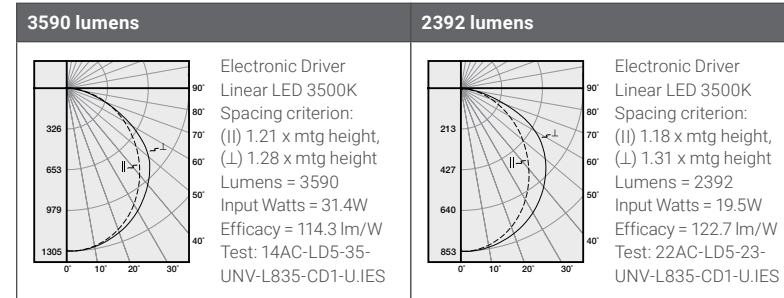
## 2' x 4'

MTO	24AC-LD5-31-UNV-L830-CD1-U	3035	25.4	119
MTO	24AC-LD5-31-UNV-L835-CD1-U	3155	25.4	124
MTO	24AC-LD5-31-UNV-L840-CD1-U	3218	25.4	127
MTO	24AC-LD5-36-UNV-L830-CD1-U	3539	30.1	118
MTO	24AC-LD5-36-UNV-L835-CD1-U	3679	30.1	122
MTO	24AC-LD5-36-UNV-L840-CD1-U	3753	30.1	125
MTO	24AC-LD5-39-UNV-L830-CD1-U	3835	32.9	116
MTO	24AC-LD5-39-UNV-L835-CD1-U	3987	32.9	121
MTO	24AC-LD5-39-UNV-L840-CD1-U	4067	32.9	123
MTO	24AC-LD5-44-UNV-L830-CD1-U	4325	37.9	114
Stock	24AC-LD5-44-UNV-L835-CD1-U	4496	37.9	119
Stock	24AC-LD5-44-UNV-L840-CD1-U	4586	37.9	121
MTO	24AC-LD5-48-UNV-L830-CD1-U	4705	41.9	112
MTO	24AC-LD5-48-UNV-L835-CD1-U	4892	41.9	117
MTO	24AC-LD5-48-UNV-L840-CD1-U	4990	41.9	119
MTO	24AC-LD5-55-UNV-L830-CD1-U	5355	49.2	109
Stock	24AC-LD5-55-UNV-L835-CD1-U	5567	49.2	113
Stock	24AC-LD5-55-UNV-L840-CD1-U	5678	49.2	116
MTO	24AC-LD5-63-UNV-L830-CD1-U	6069	57.8	105
MTO	24AC-LD5-63-UNV-L835-CD1-U	6310	57.8	109
MTO	24AC-LD5-63-UNV-L840-CD1-U	6436	57.8	111
MTO	24AC-LD5-68-UNV-L830-CD1-U	6541	65.1	101
MTO	24AC-LD5-68-UNV-L835-CD1-U	6800	65.1	105
MTO	24AC-LD5-68-UNV-L840-CD1-U	6936	65.1	107
MTO	24AC-LD5-73-UNV-L830-CD1-U	7014	71.0	99
MTO	24AC-LD5-73-UNV-L835-CD1-U	7292	71.0	103
MTO	24AC-LD5-73-UNV-L840-CD1-U	7438	71.0	105

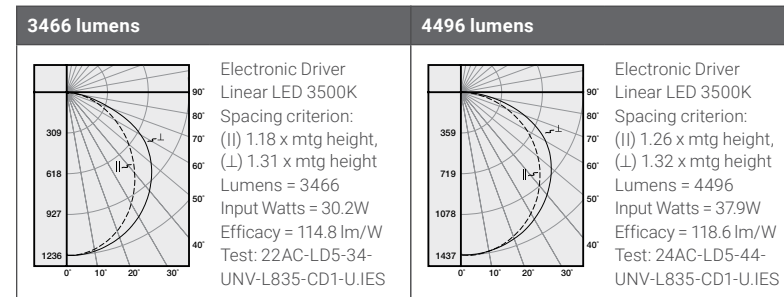
\*Made to order (MTO) requires a typical three week lead time.

# Photometrics

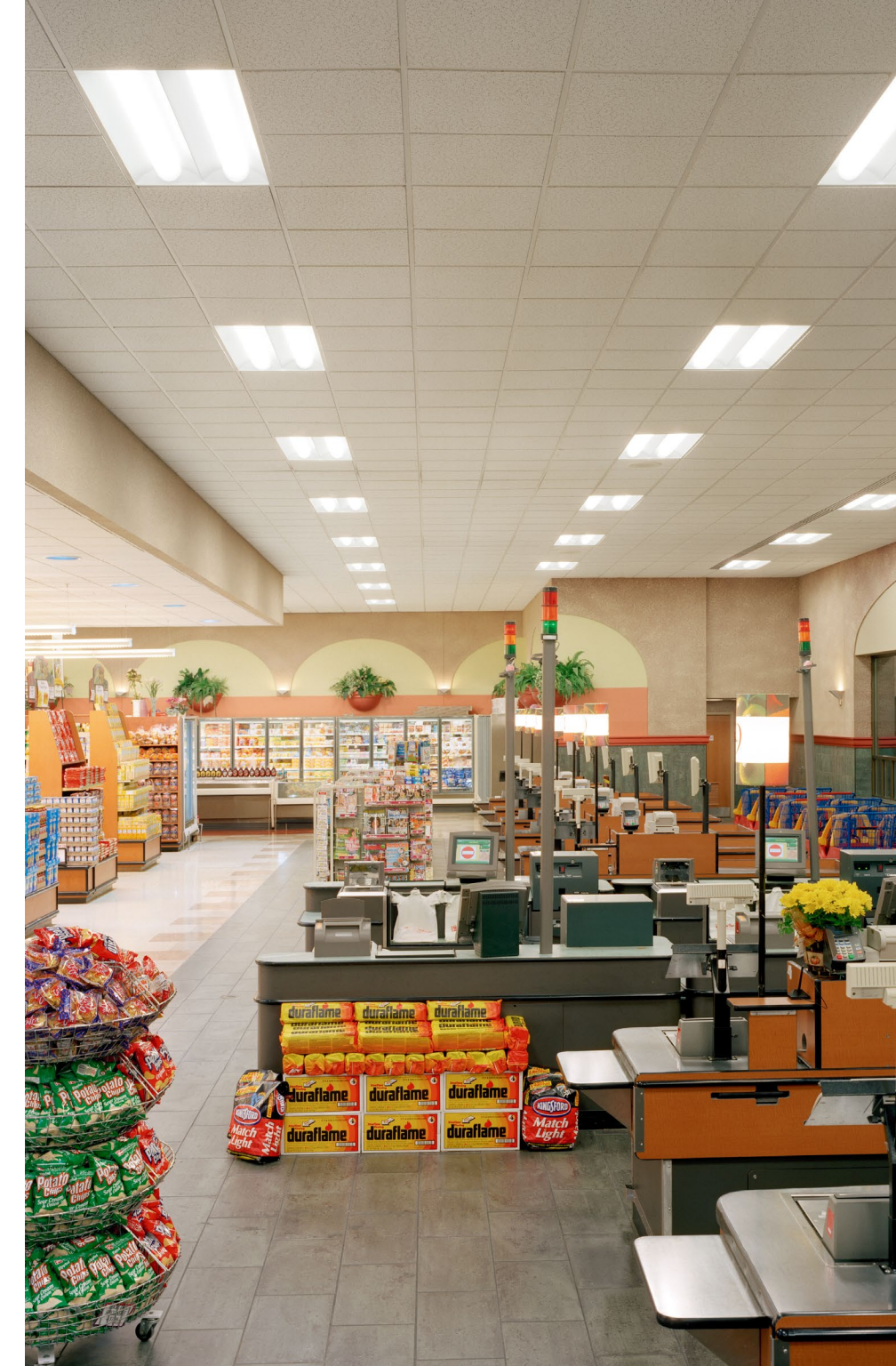
## 1' x 4'



## 2' x 2'



# Compliance and approvals



### **Lighting Product Lines**

Ametrix  
AtLite  
Corelite  
Ephesus  
Fail-Safe  
Halo  
Halo Commercial  
Invue  
io  
Iris  
Lumark  
Lumière  
McGraw-Edison  
Metalux  
MWS  
Neo-Ray  
Portfolio  
RSA  
Shaper  
Streetworks  
Sure-Lites

### **Controls Product Lines**

Fifth Light Technology  
Greengate  
iLight (International Only)  
iLumin  
Zero 88

### **Connected Lighting Systems**

Distributed Low-Voltage Power  
HALO Home  
iLumin Plus  
Enlighted  
WaveLinx  
Trellix



**Cooper Lighting Solutions**  
1121 Highway 74 South  
Peachtree City, GA 30269  
P: 770-486-4800  
[www.cooperlighting.com](http://www.cooperlighting.com)

Canada Sales  
5925 McLaughlin Road  
Mississauga, Ontario L5R 1B8  
P: 905-501-3000  
F: 905-501-3172

© 2020 Cooper Lighting Solutions  
All Rights Reserved  
Printed in USA  
Publication No. BR519027EN  
September 9, 2020 3:16 PM

Cooper Lighting Solutions is a registered trademark.

All other trademarks are property of their respective owners.

Product availability, specifications, and compliances are subject to change without notice.