

DESCRIPTION

The Metalux Horizon Surface/Suspended Wall Wash Series features recessed aesthetics and the latest in Energy Efficient Technology. The clean architectural design incorporates precision-formed aluminum reflector features that produces efficient, uniform and continuous vertical wall illumination.

The Horizon Surface/Suspended Wall Wash Series is specifically designed for effective use in various retail, merchandising and commercial wall washing environments. Horizon is ideal for retail displays, showrooms, corridor walls, art lighting and the elimination of the "Cave Effect" in office lighting applications.

SPECIFICATION FEATURES

Construction

Nominal 4-1/2" deep 10"x4' housing designed for use with T8 and biaxial lamps. The housing is constructed of die formed code gauge prime cold rolled steel. Housing incorporates a longitudinal flange for grid installation or ceiling tile support. KO's for continuous row mounting.

Electrical*

Ballasts are CBM/ETL Class "P" and are positively secured. Biax models use 2G11 base lampholders with double-edge wiping action pressure lock contacts and lamp support clips. T8 models use pressure-lock lampholders. UL/CUL listed. Suitable for damp locations.

Finish

Electrostatically applied baked white polyester powder enamel finish. Multistage cleaning cycle, iron phosphate coating with rust inhibitor. Conveyorized application and baking timing accurately controlled at an elevated temperature.

Reflector Optical Assembly

The internal aluminum reflector optical assembly incorporates an upper "Scoop" and lower "Kick" reflector design. This design produces uniform even illumination on vertical surfaces.

Continuous illumination is maintained to the junction of the wall and the ceiling. Reflectors are precision manufactured from specular low iridescent aluminum in a computer-controlled operation.

Compliance

Options to meet Buy American and other domestic preference requirements.



RWW
132
232
T1BX40

1' X 4'
RECESSED
WALL WASH

T8 OR BIAxIAL LAMPS

Vertical Illumination
Luminaire

HORIZON™



ENERGY DATA

Input Watts:
Electronic Ballast & STD Lamps
132 (32)
232 (58)
T1BX40 (71)
T1BX50 (106)
T1BX55 (117)

ES Ballast & STD Lamps
132 (30)
232 (55)
1BX50 (54 Watts)
T2BX50 (106 Watts)

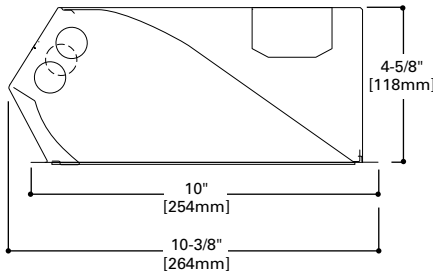
STD Ballast & STD Lamps
T1BX40 (77)

*Reference the lamp/ballast data in the Technical Section for specific lamp/ballast requirements.

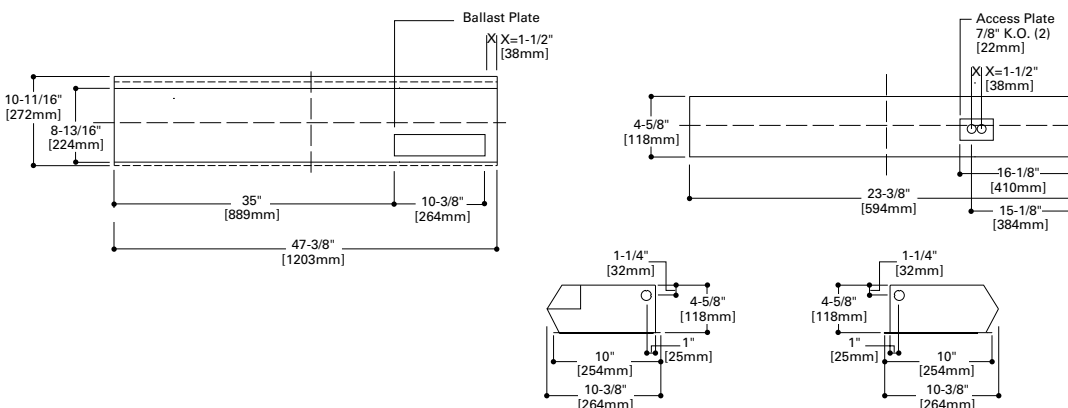
LAMPS CONTAIN MERCURY. DISPOSE ACCORDING TO LOCAL STATE OR FEDERAL LAWS

LINEAR DISCONNECT

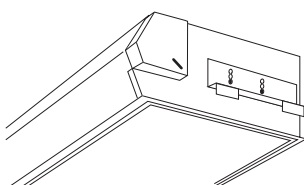
Safe and convenient means of disconnecting power.



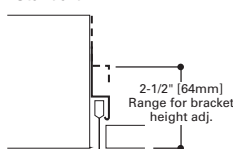
MOUNTING DATA



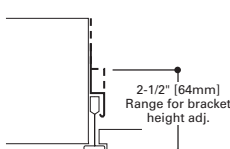
INSTALLATION DATA



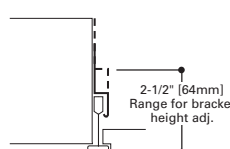
G
Grid/Lay-in
Standard

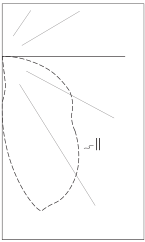


T
Slot Grid



T
Chicago Metallic





RWW-232MI
Electronic Ballast
F32T8/835 Lamps
2800 Lumens
Efficiency 69.7%
Test Report:
RWW232MI.IES

Candela

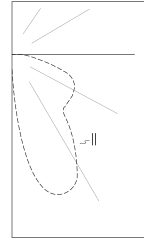
Angle	Along II	45°	Across ⊥
0	943	943	943
5	1435	1319	940
10	2087	1803	930
15	2601	2227	910
20	2656	2529	880
25	2595	2556	839
30	2479	2436	791
35	2332	2317	736
40	2136	2155	675
45	1817	1961	607
50	1667	1737	532
55	1554	1442	454
60	1416	1258	379
65	1197	1111	305
70	938	912	234
75	663	657	166
80	422	406	110
85	184	166	59
90	0	0	0

Zonal Lumen Summary

Zone	Lumens	%Lamp	%Fixture
0-30	959	17.1	24.6
0-40	1640	29.3	42.0
0-60	2973	53.1	76.2
0-90	3902	69.7	100.0
0-180	3902	69.7	100.0

Coefficients of Utilization

rc	Effective floor cavity reflectance						20%											
	80%		70%		50%													
rw	70	50	30	10	70	50	30	10	50	30	10	50	30	10	0			
RCR																		
0	83	83	83	83	81	81	81	81	77	77	77	74	74	74	71	71	71	70
1	76	73	70	67	74	71	68	66	68	66	64	65	64	62	63	61	60	59
2	69	63	59	55	67	62	58	54	60	56	53	57	54	52	55	53	51	49
3	63	56	50	46	61	55	50	45	53	48	45	51	47	44	49	46	43	42
4	58	49	43	39	56	49	43	38	47	42	38	45	41	37	44	40	37	35
5	53	43	37	32	51	43	37	32	41	36	32	40	35	32	39	34	31	30
6	48	39	32	28	47	38	32	28	37	31	27	36	31	27	35	30	27	26
7	44	35	28	24	43	34	28	24	33	28	24	32	27	24	31	27	23	22
8	41	31	25	21	40	30	25	21	30	24	20	29	24	20	28	23	20	19
9	37	28	22	18	36	27	22	18	26	21	18	26	21	17	25	21	17	16
10	35	25	19	15	34	25	19	15	24	19	15	23	19	15	23	18	15	14



RWW-T1BX40
Electronic Ballast
F40BX/835/RS Lamps
3150 Lumens
Efficiency 79.9%
Test Report:
RWWT1BX40MI.IES

Candela

Angle	Along II	45°	Across ⊥
0	419	419	419
5	931	826	423
10	2342	1586	419
15	3471	2733	412
20	3766	3408	403
25	3847	3601	389
30	3629	3573	371
35	3145	3500	349
40	2378	3154	328
45	2092	2635	306
50	2014	1960	283
55	2006	1721	260
60	1961	1593	236
65	1899	1514	219
70	1631	1382	209
75	1099	1146	203
80	675	653	191
85	405	326	99
90	0	0	0

Zonal Lumen Summary

Zone	Lumens	%Lamp	%Fixture
0-30	1095	17.4	21.8
0-40	1998	31.7	39.7
0-60	3648	57.9	72.5
0-90	5031	79.9	100.0
0-180	5031	79.9	100.0

Coefficients of Utilization

rc	Effective floor cavity reflectance						20%											
	80%		70%		50%													
rw	70	50	30	10	70	50	30	10	50	30	10	50	30	10	0			
RCR																		
0	95	95	95	95	93	93	93	93	89	89	89	85	85	85	81	81	81	80
1	86	82	79	76	84	81	77	74	77	74	72	74	72	70	71	69	68	66
2	78	71	66	61	76	70	65	60	67	63	59	64	61	57	62	59	56	54
3	71	62	56	50	69	61	55	50	59	53	49	57	52	48	54	51	47	45
4	65	55	48	42	63	54	47	42	52	46	41	50	45	41	48	44	40	38
5	59	48	41	35	57	47	40	35	45	39	34	44	38	34	42	38	34	32
6	54	43	35	30	52	42	35	30	40	34	29	39	33	29	38	33	29	27
7	50	38	31	26	48	37	30	25	36	30	25	35	29	25	34	29	25	23
8	45	34	27	22	44	33	26	22	32	26	22	31	26	21	30	25	21	20
9	42	30	23	18	40	30	23	18	29	23	18	28	22	18	27	22	18	16
10	39	27	20	16	37	27	20	16	26	20	16	25	20	16	24	19	16	14

WALL ILLUMINANCE

Individual Unit*									Multiple Units*									Continuous Row*																		
	0'	1'	2'	3'	4'	5'	6'	7'	8'		0'	1'	2'	3'	4'	5'	6'	7'	8'		0'	1'	2'	3'	4'	5'	6'	7'	8'							
Ceiling	█									█									█																	
8'	65	59	42	24	13	7	4	2	2	69	63	48	33	27	33	48	63	69	95	95	95	95	95	95	95	95	95	95	95	95	95	95				
7'	82	74	56	35	20	11	7	4	3	88	81	65	49	42	49	65	81	88	128	129	129	129	129	129	129	129	129	129	129	129	129	129	129	129		
6'	64	59	47	33	21	13	8	5	3	72	68	58	48	44	48	58	68	72	113	113	114	114	114	114	114	114	114	115	115	115	115	115	115	115	115	
5'	50	46	38	28	19	13	8	6	4	59	56	50	44	42	44	50	56	59	96	97	98	98	99	99	99	99	99	99	99	99	99	99	99	99	99	99
4'	35	33	29	23	17	12	8	6	4	45	43	40	37	36	37	40	43	45	76	78	78	79	79	79	80	79	79	79	79	79	79	79	79	79	79	79
3'	25	24	21	18	14	10	8	6	4	34	34	33	31	31	31	33	34	34	60	62	62	63	63	63	64	64	64	64	64	64	64	64	64	64	64	64
2'	18	18	16	14	11	9	7	5	4	28	27	27	26	26	26	27	27	28	49	50	51	51	52	52	52	52	52	52	52	52	52	52	52	52	52	52
1'	14	14	13	11	10	8	6	5	4	23	23	23	23	23	23	23	23	23	41	43	43	44	44	44	44	45	45	45	45	45	45	45	45	45	45	45
Floor	█									█									█																	

*Units located 3' from wall. Data provided for RWW-232MI Unit

ORDERING INFORMATION

SAMPLE NUMBER: RWW-232MI-120V-EB81-U

<p>Domestic Preferences⁽⁶⁾ [Blank]=Standard BAA=Buy American Act TAA=Trade Agreements Act</p> <p>Series RWW=Recessed Wall Wash</p> <p>Number of Lamps (Not included) 1=1 Lamp 2=2 Lamp T1=2' x 4' Fixture with one Biax Lamp at each end</p> <p>Wattage (Length) 32=32W T8 (48") BX40=40W Biax (24")⁽³⁾⁽⁴⁾ BX50=50W Biax (24")⁽³⁾⁽⁴⁾ BX55=55W Biax (24")⁽³⁾⁽⁴⁾</p>	<p>Louver Finish I=Semi-Specular/Haze (Low Iridescent) Standard M=Specular/Mirrored (Low Iridescent)</p> <p>Voltage⁽¹⁾ 120V=120 Volt 277V=277 Volt 347V=347 Volt UNV=Universal Voltage 120-277⁽²⁾</p> <p>Options GL=Single Element Fuse GM=Double Element Fuse EL=Emergency installed</p>	<p>Ballast Type Blank=Standard Magnetic Ballast (40W Biax only) EB8_=T8 Electronic Start. Total Harmonic Distortion < 10% EB8_/PLUS= T8 Electronic Start. Total Harmonic Distortion < 10%. High Ballast Factor > 1.15. ER8_=T8 Electronic Program Rapid Start. Total Harmonic Distortion < 10% EB5_=T5 Biax Electronic Instant Start Total Harmonic Distortion < 20%⁽⁵⁾ TEB5_=T5 Biax Electronic Instant Start Total Harmonic Distortion < 10%⁽⁵⁾ ER5_=T5 Biax Electronic Program Rapid Start. Total Harmonic Distortion < 10%</p> <p>Number of Ballasts 1=1 Ballast 2=2 Ballasts</p>	<p>Options RLS=Rotor-Lock Socket (T8 Lamps Only)</p> <p>Accessories⁽⁷⁾ DF-104-W=4' Version Drywall Frame Kit</p>	<p>Packaging U=Unit Pack PALC=Job Pack, in carton</p>
--	--	--	---	--

NOTES: ⁽¹⁾ Products also available in non-US voltages and frequencies for international markets. ⁽²⁾ UNV available in T5 and T8 linear only. Not available when specifying emergencies, voltage must be specific. ⁽³⁾ Electronic ballast only. ⁽⁴⁾ Biax only available in 1 lamp cross section. ⁽⁵⁾ Not available in UNV voltages. Must specify voltage. ⁽⁶⁾ Only product configurations with these designated prefixes are built to be compliant with the Buy American Act of 1933 (BAA) or Trade Agreements Act of 1979 (TAA), respectively. Please refer to **DOMESTIC PREFERENCES** website for more information. Components shipped separately may be separately analyzed under domestic preference requirements. ⁽⁷⁾ Accessories sold separately will be separately analyzed under domestic preference requirements. Consult factory for further information.

SHIPPING DATA

Catalog No.	Wt.
RWW-132	17.5
RWW-232	17.5

Specifications & dimensions subject to change without notice. Consult your Cooper Lighting Solutions Representative for availability and ordering information.