

DESCRIPTION

The Metalux Horizon Recessed Wall Wash Series features recessed aesthetics and the latest in Energy Efficient Technology. The clean architectural design incorporates precision-formed aluminum reflector features that produces efficient, uniform and continuous vertical wall illumination.

The Horizon Recessed Wall Wash Series is specifically designed for effective use in various retail, merchandising and commercial wall washing environments. Horizon is ideal for retail displays, showrooms, corridor walls, art lighting and the elimination of the "Cave Effect" in office lighting applications.

Catalog #		Type
Project		
Comments		Date
Prepared by		

SPECIFICATION FEATURES

Construction

Nominal 4-1/2" deep 10" x 2' housing designed for use with 40, 50 and 55 watt biaxial 17W T8 lamps. The housing is constructed of die formed code gauge prime cold rolled steel. Housing incorporates a longitudinal flange for grid installation or ceiling tile support. KO's for continuous row mounting.

Electrical*

Ballasts are CBM/ETL Class "P" and are positively secured. Biax models use 2G11 base lampholders with double-edge wiping action pressure lock contacts and lamp support clips. T8 models use pressure-lock lampholders. UL/CUL listed. Suitable for damp locations.

Finish

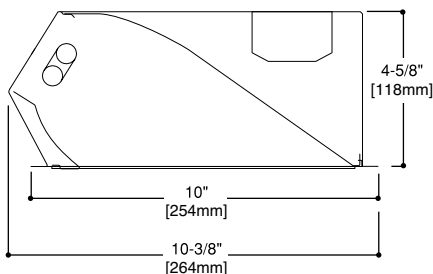
Electrostatically applied baked white polyester powder enamel finish. Multistage cleaning cycle, iron phosphate coating with rust inhibitor. Conveyorized application and baking timing accurately controlled an eleat vated temperature.

Reflector Optical Assembly

The internal aluminum reflector optical assembly incorporates an upper "Scoop" and lower "Kick" reflector design. This design produces uniform even illumination on vertical surfaces. Continuous illumination is maintained to the junction of the wall and the ceiling. Reflectors are precision manufactured from specular low iridescent aluminum in a computer-controlled operation.

Compliance

Options to meet Buy American and other domestic preference requirements.



RWW
1BX40
117
217

1' X 2'
RECESSED WALL WASH
BIAxIAL OR T8 LAMPS

Vertical Illumination
Luminaire

HORIZON™



ENERGY DATA

Input Watts:

Electronic Ballast & STD Lamps

1BX40 (43)
1BX50 (54)
1BX55 (60)
117 (19)
217 (34)

STD Ballast & STD Lamps

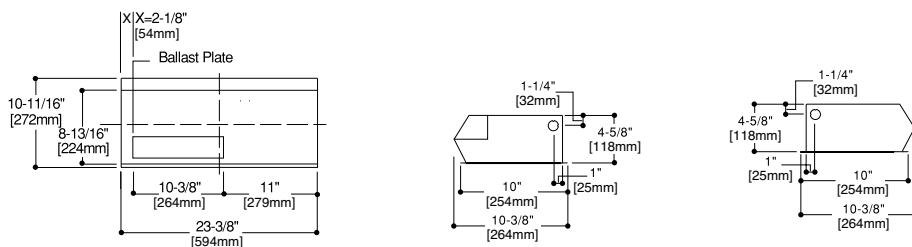
1BX40 (48)
117 (23)
217 (45)

ES Ballast & STD Lamps

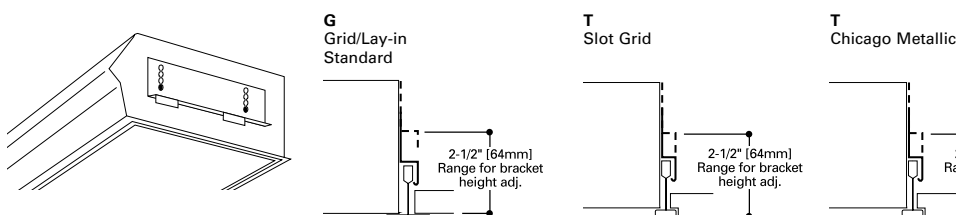
117 (23)
217 (45)

*Reference the lamp/ballast data in the Technical Section for specific lamp/ballast requirements.

MOUNTING DATA



INSTALLATION DATA

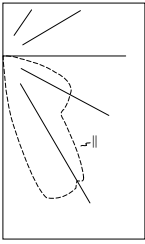


LAMPS CONTAIN MERCURY. DISPOSE ACCORDING TO LOCAL, STATE OR FEDERAL LAWS

LINEAR DISCONNECT

Safe and convenient means of disconnecting power.

PHOTOMETRICS



RWW-1BX40MI Electronic Ballast F14T5/835 Lamps 3150 Lumens Efficiency 80.4% Test Report #167P117

Candlepower

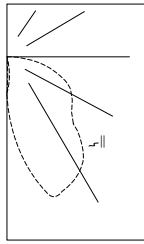
Table with 4 columns: Angle, Along ll, 45°, Across ⊥. Rows 0-90 degrees.

Zonal Lumen Summary

Table with 4 columns: Zone, Lumens, %Lamp, %Fixture. Rows 0-30, 0-40, 0-60, 0-90, 0-180.

Coefficients of Utilization

Table with columns for Effective floor cavity reflectance (80%, 70%, 20%) and rows for RCR (0-10).



RWW-217MI Electronic Ballast F17T8/835 Lamps 1400 Lumens Efficiency 66.9% Test Report #167P116

Candela

Table with 4 columns: Angle, Along ll, 45°, Across ⊥. Rows 0-90 degrees.

Zonal Lumen Summary

Table with 4 columns: Zone, Lumens, %Lamp, %Fixture. Rows 0-30, 0-40, 0-60, 0-90, 0-180.

Coefficients of Utilization

Table with columns for Effective floor cavity reflectance (80%, 70%, 20%) and rows for RCR (0-10).

WALL ILLUMINATION

Table for Individual Unit* showing wall illumination levels for ceiling and floor at various heights.

Table for Multiple Units* showing wall illumination levels for ceiling and floor at various heights.

Table for Continuous Row* showing wall illumination levels for ceiling and floor at various heights.

*Units located 3' from wall. Data provided for RWW-232MI Unit

Fixture Location: 36" from center of luminaire to wall. Mounting Height: 9ft.

ORDERING INFORMATION

SAMPLE NUMBER: RWW-1BX40MI-120V-EB51-U

Ordering options including Domestic Preferences, Louver Finish, Ballast Type, Options, Accessories, Number of Ballasts, Wattage, and Shipping Data.

NOTES: (1) Products also available in non-US voltages and frequencies for international markets. (2) UNV available in T5 and T8 linear only.

Specifications & dimensions subject to change without notice. Consult your Cooper Lighting Solutions Representative for availability and ordering information.