

DESCRIPTION

The Metalux Horizon Recessed Wall Wash Series features recessed aesthetics and the latest in Energy Efficient Technology. The clean architectural design incorporates precision-formed aluminum reflector features that produces efficient, uniform and continuous vertical wall illumination.

The Horizon Recessed Wall Wash Series is specifically designed for effective use in various retail, merchandising and commercial wall washing environments. Horizon is ideal for retail displays, showrooms, corridor walls, art lighting and the elimination of the "Cave Effect" in office lighting applications.

Catalog #		Type
Project		
Comments		Date
Prepared by		

SPECIFICATION FEATURES

Construction

Nominal 4-1/2" deep 10" x 4' housing designed for use with T5 and T5 HO lamps. The housing is constructed of die formed code gauge prime cold rolled steel. Housing incorporates a longitudinal flange for grid installation or ceiling tile support. KO's for continuous row mounting.

Electrical*

Ballasts are Class "P" and are positively secured. Rotor-lock lampholders ensure positive lamp retention. UL/CUL listed. Suitable for damp locations.

Finish

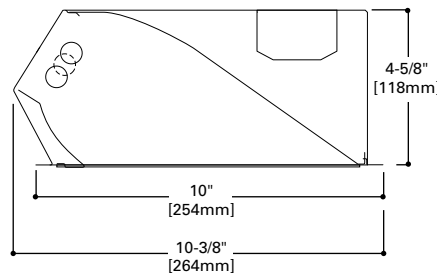
Electrostatically applied baked white polyester powder enamel finish. Multistage cleaning cycle, iron phosphate coating with rust inhibitor. Conveyorized application and baking timing accurately controlled at an elevated temperature.

Reflector Optical Assembly

The internal aluminum reflector optical assembly incorporates an upper "Scoop" and lower "Kick" reflector design. This design produces uniform even illumination on vertical surfaces. Continuous illumination is maintained to the junction of the wall and the ceiling. Reflectors are precision manufactured from specular low iridescent aluminum in a computer-controlled operation.

Compliance

Options to meet Buy American and other domestic preference requirements.



RWW

- 114 T5
- 214 T5
- 124 T5
- 224 T5
- 128 T5
- 228 T5
- 154 T5
- 254 T5

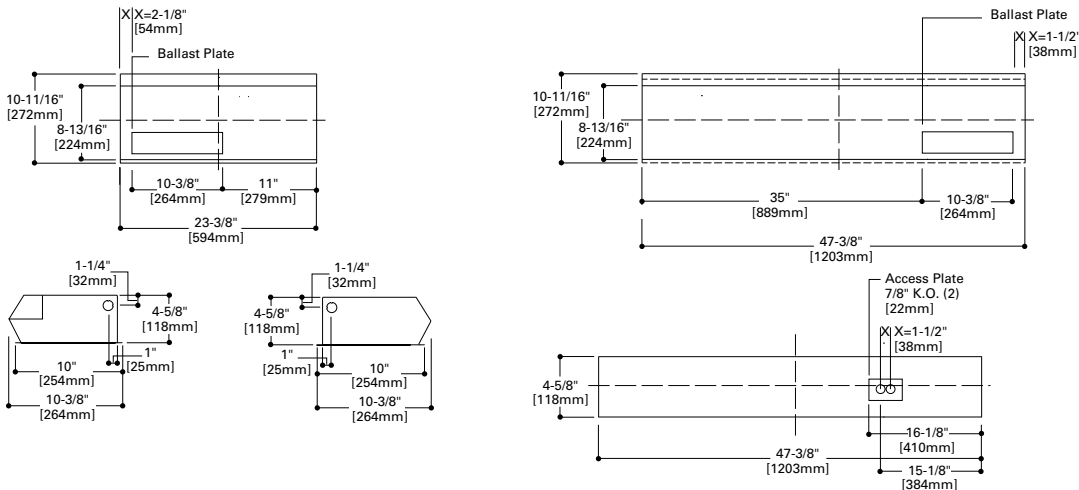
1' X 2' AND 1' X 4'
RECESSED WALL WASH
T5 OR T5HO LAMPS

Vertical Illumination
Luminaire

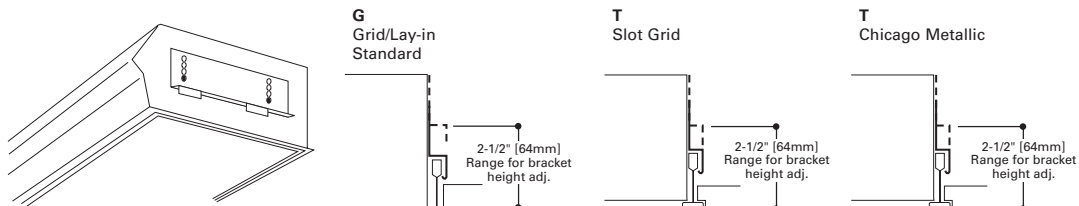
HORIZON™



MOUNTING DATA



INSTALLATION DATA



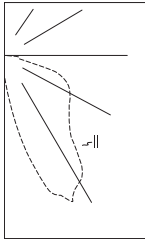
ENERGY DATA

Input Watts:
Electronic Ballast & STD Lamps

114 T5	(19)
214 T5	(38)
124 T5	(26)
224 T5	(52)
128 T5	(32)
228 T5	(68)
154 T5	(58)
254 T5	(120)

*Reference the lamp/ballast data in the Technical Section for specific lamp/ballast requirements.

PHOTOMETRICS



RWW-214T5MI Electronic Ballast F14T5/835 Lamps 1350 Lumens Efficiency 76.7% Test Report #167P119

Candela

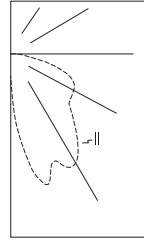
Table with 4 columns: Angle, Along II, 45°, Across ⊥. Rows range from 0 to 90 degrees.

Zonal Lumen Summary

Table with 4 columns: Zone, Lumens, %Lamp, %Fixture. Rows range from 0-30 to 0-180.

Coefficients of Utilization

Table with 8 columns for effective floor cavity reflectance (80%, 70%, 50%, 30%, 10%, 0%) and 2 rows for rc and rw. Includes RCR values.



RWW-228T5MI Electronic Ballast F28T5/835 Lamps 2900 Lumens Efficiency 71.7% Test Report #167P118

Candela

Table with 4 columns: Angle, Along II, 45°, Across ⊥. Rows range from 0 to 90 degrees.

Zonal Lumen Summary

Table with 4 columns: Zone, Lumens, %Lamp, %Fixture. Rows range from 0-30 to 0-180.

Coefficients of Utilization

Table with 8 columns for effective floor cavity reflectance (80%, 70%, 50%, 30%, 10%, 0%) and 2 rows for rc and rw. Includes RCR values.

WALL ILLUMINANCE

Large table showing wall illuminance in foot-candles for Individual Unit, Multiple Units, and Continuous Row configurations at various heights and distances.

*Units located 3' from wall. Data provided for RWW-214T5MI Unit

Fixture Location: 36" from center of luminaire to wall. Mounting Height: 9ft.

ORDERING INFORMATION

SAMPLE NUMBER: RWW-1BX40MI-120V-EB51-U

Domestic Preferences (6) [Blank]=Standard BAA=Buy American Act TAA=Trade Agreements Act

Series RWW=Recessed Wall Wash

Number of Lamps (Not included) 1=1 Lamp 2=2 Lamp

Wattage (Length) 17=17W T8 (24") BX40=40W Biax (24") (3)(4) BX50=50W Biax (24") (3)(4) BX55=55W Biax (24") (3)(4)

Louver Finish I=Semi-Specular/Haze (Low Iridescent) Standard MI=Specular/Mirrored (Low Iridescent)

Voltage (1) 120V=120 Volt 277V=277 Volt 347V=347 Volt UNV=Universal Voltage 120-277(2)

Options GL=Single Element Fuse GM=Double Element Fuse EL=Emergency installed

Ballast Type Blank=Standard Magnetic Ballast (40W Biax only) EB8 =T8 Electronic Start. Total Harmonic Distortion < 10% EB8_/PLUS= T8 Electronic Start. Total Harmonic Distortion < 10%. High Ballast Factor > 1.15. ER8 =T8 Electronic Program Rapid Start. Total Harmonic Distortion < 10% EB5 =T5 Biax Electronic Instant Start. Total Harmonic Distortion < 20% (5) TEB5 =T5 Biax Electronic Instant Start. Total Harmonic Distortion < 10% (5) ER5 =T5 Biax Electronic Program Rapid Start. Total Harmonic Distortion < 10%

Number of Ballasts 1=1 Ballast 2=2 Ballasts

Options RLS=Rotor-Lock Socket (T8 Lamps Only)

Accessories (7) DF-102-W=2' Version Drywall Frame Kit

Packaging U=Unit Pack PALC=Job Pack, in carton

NOTES: (1) Products also available in non-US voltages and frequencies for international markets. (2) UNV available in T5 and T8 linear only. Not available when specifying emergencies, voltage must be specific. (3) Electronic ballast only. (4) Biax only available in 1 lamp cross section. (5) Not available in UNV voltages. Must specify voltage. (6) Only product configurations with these designated prefixes are built to be compliant with the Buy American Act of 1933 (BAA) or Trade Agreements Act of 1979 (TAA), respectively. Please refer to DOMESTIC PREFERENCES website for more information. Components shipped separately may be separately analyzed under domestic preference requirements. (7) Accessories sold separately will be separately analyzed under domestic preference requirements. Consult factory for further information.

Specifications & dimensions subject to change without notice. Consult your Cooper Lighting Solutions Representative for availability and ordering information.

SHIPPING DATA

Table with 2 columns: Catalog No., Wt. Rows include RWW-114T5, RWW-214T5, RWW-128T5, RWW-228T5.



Cooper Lighting Solutions 1121 Highway 74 South Peachtree City, GA 30269 P: 770-486-4800 www.cooperlighting.com

© 2021 Cooper Lighting Solutions All Rights Reserved.

Specifications and dimensions subject to change without notice.

ADF020636 November 18, 2021 4:38 PM