

1" DIA. BREAK A WAY COUPLING DETAIL

SPECIFICATIONS

PERFORMANCE CRITERIA:

1. BREAK A WAY COUPLING CONFORMS TO AASHTO "STANDARD SPECIFICATION FOR STRUCTURAL SUPPORTS FOR HIGHWAY SIGNS, LUMINAIRES AND TRAFFIC SIGNALS."
2. BREAK A WAY COUPLINGS HAS BEEN CRASH TESTED AND FHWA APPROVED IN ACCORDANCE WITH THE REQUIREMENTS OF NCHRP REPORT 350, "RECOMMENDED PROCEDURES FOR THE SAFETY PERFORMANCE EVALUTATION OF HIGHWAY FEATURES."
3. ALLOWABLE TOTAL POLE MASS = 450 kg (992 lbs.)

PHYSICAL PROPERTIES:

1. ULTIMATE TENSILE LOAD = 221.5 kN (49.8 KIPS) MIN.
2. TENSILE YIELD LOAD = 192.0 kN (43.2 KIPS) MIN.
3. RESTRAINED SHEAR LOAD = 24.5 kN (5.5 KIPS) MIN.
4. ROCKWELL C HARDNESS (HRC) = 32 MIN.*
5. BRINELL HARDNESS (HBN) = 302 MIN.*

*IN THE EVENT OF DISAGREEMENTS BETWEEN HARDNESS AND TENSILE STRENGTH, STRENGTH REQUIREMENTS SHALL GOVERN.

CORROSION PROTECTION:

1. ALL BREAK A WAY COUPLINGS, NUTS, BOLTS, WASHERS AND SHIMS SHALL BE GALVANIZED AFTER FABRICATION IN ACCORDANCE WITH ASTM A153.



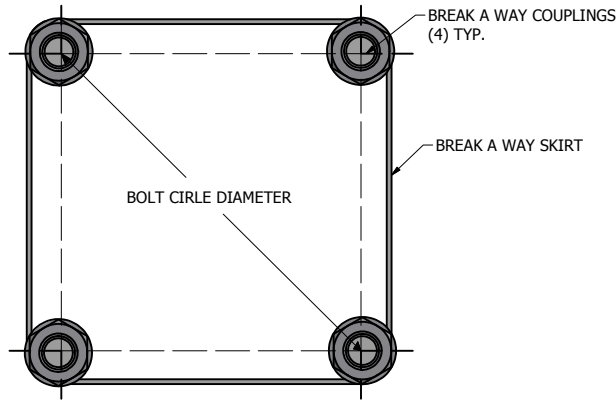
P.O. Box 340
Eastpointe, MI 48021
P: (586) 771-4610 | F: (586) 771-5527
www.lytepoles.com

a DWM company

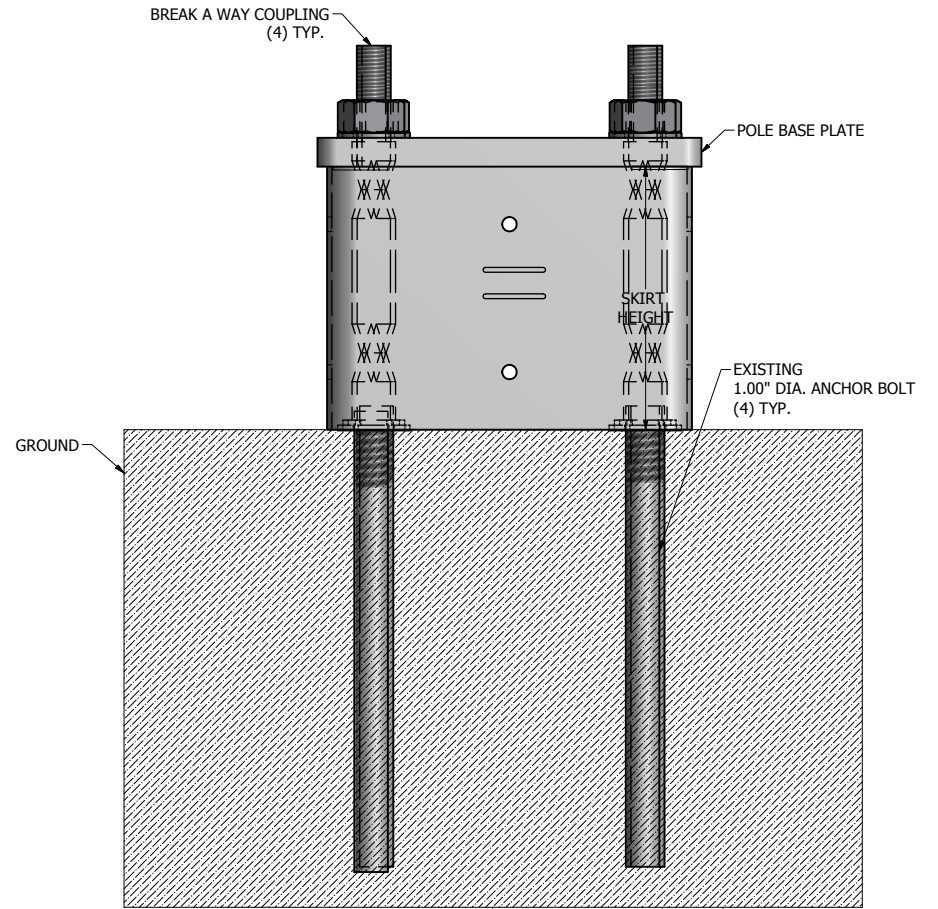
DRAWN: L. GRUNIS	DATE: 4/30/2019
REVISION:	DATE:
QUOTE:	S.O.#
APPROVAL SIGNATURE:	APPROVAL SIGNATURE:

SOME GEOGRAPHICAL AREAS HAVE SPECIAL WIND CONDITIONS THAT CAN CREATE WIND INDUCED VIBRATIONS CAUSING A FATIGUE PROBLEM. NO METHOD HAS YET BEEN FOUND FOR PREDICTING DESTRUCTIVE LIGHTING POLE VIBRATION. THESE CONDITIONS ARE UNIQUE AND CANNOT BE GUARANTEED AGAINST, AND ARE THE RESPONSIBILITY OF A LOCAL SITE ENGINEER.	
WARNING: DO NOT INSTALL LIGHT POLE WITHOUT INTENDED LOADING.	
TITLE:	
CATALOG: 1" DIA BREAK A WAY COUPLING DETAIL	
DWG NO: 1 IN BREAK A WAY DETAIL (LP)	SIZE C
SHEET 1 OF 2	

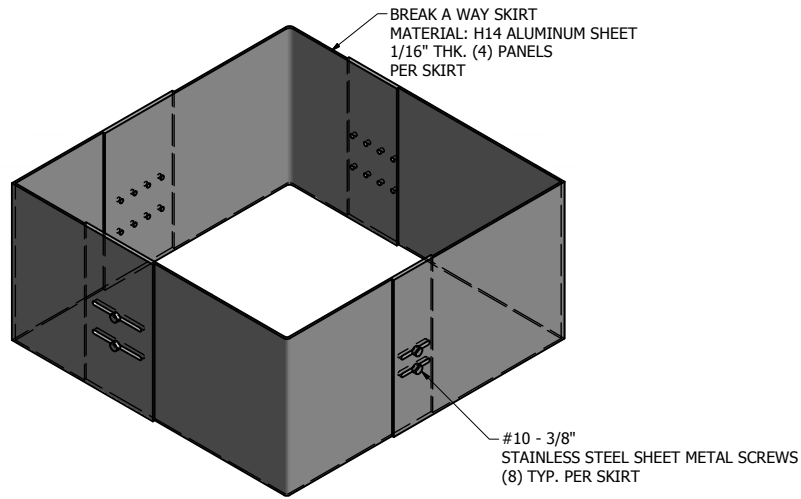




TOP VIEW OF BREAK A WAY SKIRT DETAIL



FRONT VIEW OF BREAK A WAY SKIRT DETAIL



ISOMETRIC (3-D) VIEW OF BREAK A WAY SKIRT DETAIL



 P.O. Box 340
 Eastpointe, MI 48021
 P: (586) 771-4610 | F: (586) 771-5527
 www.lytepoles.com
a DWM company

DRAWN: L. GRUNIS	DATE: 4/30/2019
REVISION:	DATE:
QUOTE:	S.O.#
APPROVAL SIGNATURE:	APPROVAL SIGNATURE:

<small>SOME GEOGRAPHICAL AREAS HAVE SPECIAL WIND CONDITIONS THAT CAN CREATE WIND INDUCED VIBRATIONS CAUSING A FATIGUE PROBLEM. NO METHOD HAS YET BEEN FOUND FOR PREDICTING DESTRUCTIVE LIGHTING POLE VIBRATION. THESE CONDITIONS ARE UNIQUE AND CANNOT BE GUARANTEED AGAINST, AND ARE THE RESPONSIBILITY OF A LOCAL SITE ENGINEER.</small>	
WARNING: DO NOT INSTALL LIGHT POLE WITHOUT INTENDED LOADING.	
TITLE:	
CATALOG: BREAK A WAY SKIRT DETAIL	
DWG NO: 1 IN BREAK A WAY DETAIL (LP)	SIZE C
SHEET 2 OF 2	

