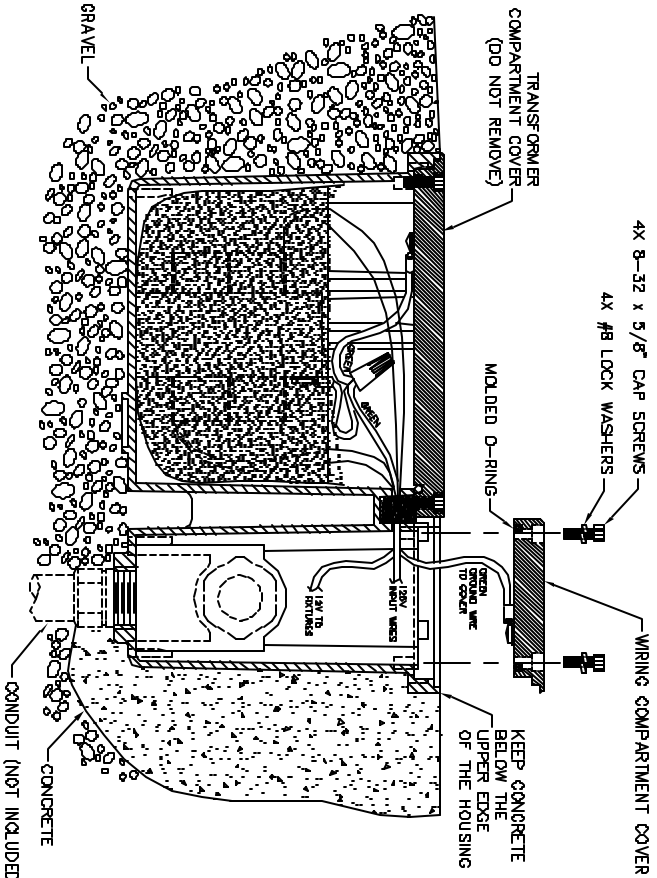


THIS DOCUMENT IS CONFIDENTIAL, PROPERTY OF COOPER LIGHTING SOLUTIONS. LUMBER AND SLOWED SUBJECT TO RETURN UPON DEMAND. TITLE TO THIS DOCUMENT IS RESERVED. ALL RIGHTS ARE RESERVED FOR ANY REASON. THIS DOCUMENT IS TO BE USED ONLY PURSUANT TO WRITTEN INSTRUCTIONS OR WRITTEN LICENSE OR WRITTEN INSTRUCTIONS OF COOPER LIGHTING SOLUTIONS. LUMBER, ALL RIGHTS TO DESIGNS AND INVENTIONS ARE RESERVED BY COOPER LIGHTING SOLUTIONS. LUMBER POSSESSION OF THE DOCUMENT IS ACCEPTED SUBJECT TO THE FOREGOING.

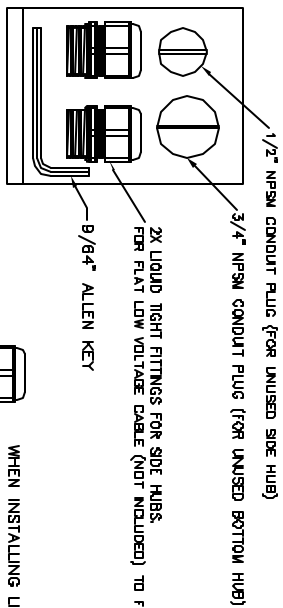
WARNING!

Turn off all power to the fixture before initial installation, maintenance, relamping and servicing. This fixture was designed for in-ground, concrete pour, brick and masonry. Wiring and installation must be performed by a qualified electrician only and must be installed in accordance with local and national electric codes.

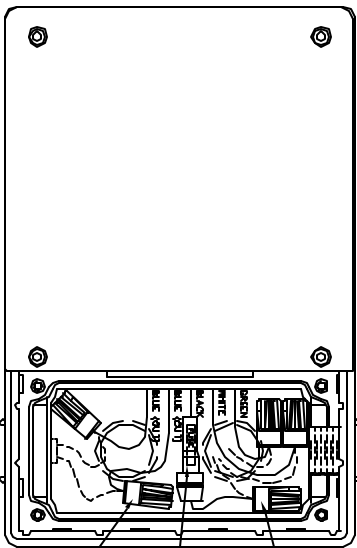


INSTALLATION:

1. Excavate soil for housing placement and conduit runs. Contour the shape of hole for transformer housing allowing an additional three inches minimum around, and eight inches under the housing for placement of granular materials.
 2. Remove small wiring compartment cover using 5/64" allen key (included) to remove the four cap screws. Lift out cover. Connect conduit to 3/4" NPSM female threaded hub on bottom of housing. Install 3/4" conduit plug (included in bag) on unused bottom hub. Seal hub threads with silicone sealant or Teflon tape. Place housing in hole with pad gravel around and below housing for good drainage.
 3. Connect 120V wires to the transformer wires.
 4. Connect Black to Black, White to White, and Green to Green using waterproof wire nut connectors (not included).
- Install liquid tight fittings into the 1/2" NPSM side hubs using sealant on threads to prevent water entry. Connect the low voltage cable wires to the two blue wires in the wiring compartment using waterproof wire nut connectors (not included).
- FOR CONCRETE POUR INSTALLATION:**
 Pour concrete to just below top of housing. Do not pour up to covers or the covers may not be removable.
FOR SOIL INSTALLATION:
 Surround housing with soil and slope the soil near housing to promote good drainage away from the housing. Do not install in locations where water can accumulate or submerge transformer housing.



WHEN INSTALLING LIQUID TIGHT FITTINGS SEAL THREADS WITH TEFLON TAPE OR PIPE THREAD COMPOUND TO PREVENT WATER ENTRY



LOW VOLTAGE POWER CORD TO FIXTURES (NOT INCLUDED)

REV	DATE	DESCRIPTION	BY	CHK
B	12-09-02	SEE MCN #A244B FOR CHANGE		
A	11-09-02	PRODUCTION RELEASE		

<p>156 TRANSFORMER INSTALLATION INSTRUCTIONS</p>		<p>Lighter 3000 4003 404-7713 Telephone (866) 444-7713 FAX (800) 444-7880</p>
SIZE	PWG	TH
D	9106	B
REV		