

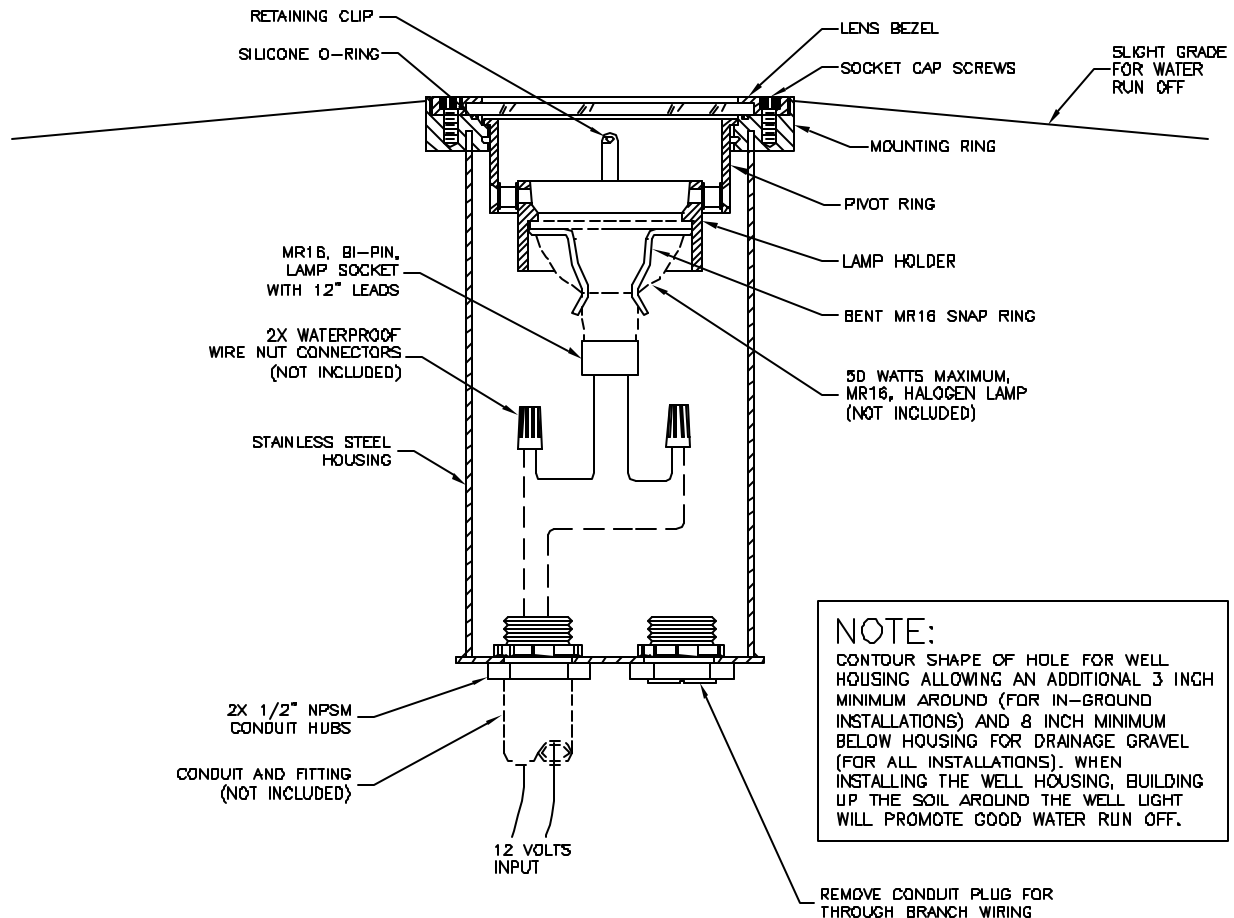


Lumière
1250 Calle Suerte
Camarillo, CA 93012-8053
PH (805) 484-7713
FAX (805) 445-7693



www.cooperlighting.com

INSTALLATION INSTRUCTIONS: 613 WELL LIGHT



NOTE:
CONTOUR SHAPE OF HOLE FOR WELL HOUSING ALLOWING AN ADDITIONAL 3 INCH MINIMUM AROUND (FOR IN-GROUND INSTALLATIONS) AND 8 INCH MINIMUM BELOW HOUSING FOR DRAINAGE GRAVEL (FOR ALL INSTALLATIONS). WHEN INSTALLING THE WELL HOUSING, BUILDING UP THE SOIL AROUND THE WELL LIGHT WILL PROMOTE GOOD WATER RUN OFF.

WARNING:

WIRING AND INSTALLATION MUST BE PERFORMED BY A QUALIFIED ELECTRICIAN ONLY. TURN POWER OFF BEFORE INITIAL INSTALLATION, SERVICING, MAINTENANCE, AND RELAMPING. FIXTURES SHOULD ALWAYS BE INSTALLED IN ACCORDANCE WITH LOCAL AND/OR NATIONAL ELECTRIC CODES. THIS IS A 12 VOLT FIXTURE. A REMOTE TRANSFORMER IS REQUIRED (NOT INCLUDED) USE U.L. LISTED WATERPROOF WIRE NUT CONNECTORS CATALOG # KING-T8, MANUFACTURED BY KING TECHNOLOGY, Inc. OR EQUIVALENT. DO NOT INSTALL THIS FIXTURE IN ANY COMBUSTIBLE MATERIALS.

NOTE:

THIS FIXTURE CAN BE USED FOR IN-GROUND, CONCRETE POUR, BRICK, AND MASONRY INSTALLATIONS. IT IS NOT DESIGNED FOR INSTALLATION IN ANY COMBUSTIBLE MATERIALS.

INSTALLATION INSTRUCTIONS:

1. REMOVE LENS BEZEL BY LOOSENING FOUR SOCKET CAP SCREWS USING ALLEN HEX KEY (INCLUDED). REMOVE PIVOT RING/LAMP HOLDER ASSEMBLY BY LIFTING IT UP AND OUT OF THE HOUSING.
2. RUN THE LOW VOLTAGE WIRES FROM REMOTE TRANSFORMER, THROUGH THE 1/2" NPSM CONDUIT HUB INTO THE HOUSING. ATTACH CONDUIT AND FITTING TO THE HUBS ON THE BOTTOM OF THE FIXTURE HOUSING. USE THREAD SEALER OR TEFLON TAPE ON THREADS TO ENSURE A WATER TIGHT CONNECTION.
3. PUSH MR16 LAMP (NOT INCLUDED) INTO SOCKET, THEN INSTALL LAMP INTO LAMP HOLDER, FOLLOWED BY SNAP RING.
4. CONNECT 12 VOLT SUPPLY WIRES TO SOCKET WIRES USING WATERPROOF WIRE NUT CONNECTORS (NOT INCLUDED). POLARITY NOT CRITICAL.

5. MOVE PIVOT RING RETAINING CLIP TO DESIRED POSITION AND REINSTALL PIVOT RING/LAMP HOLDER ASSEMBLY.
6. O-RING MUST BE SEATED PROPERLY IN PLACE AND LENS BEZEL ASSEMBLY MUST BE CLEAN FOR A PROPER SEAL.
7. REINSTALL LENS BEZEL USING FOUR SOCKET CAP SCREWS.
8. APPLY POWER TO THE FIXTURE TO TEST FOR PROPER OPERATION.

LAMP:

USE ONLY 12V, 50 WATTS MAXIMUM, BI-PIN, MR16, HALOGEN LAMP. CHECK PACKAGE AND FIXTURE LABELING CAREFULLY FOR PROPER LAMP TYPE AND WATTAGE.

TO RELAMP:

REMOVE LENS BEZEL BY REMOVING FOUR SOCKET CAP SCREWS FROM THE LENS BEZEL. LIFT PIVOT RING/LAMP HOLDER ASSEMBLY OUT. PULL (DO NOT TWIST) THE SOCKET OFF BOTTOM OF LAMP. REMOVE SNAP RING AND LAMP, PUSH NEW LAMP BI-PINS INTO SOCKET, PLACE LAMP INTO LAMP BEZEL AND SECURE WITH SNAP RING. LOWER PIVOT RING INTO FIXTURE. RE-AIM IF DESIRED. REPLACE LENS BEZEL AND O-RING. SECURE WITH FOUR SOCKET CAP SCREWS.

REMOVE CONDUIT PLUG FOR THROUGH BRANCH WIRING

Lumière		COOPER Lighting Solutions	
DWG No.	9127	REV.	A
SHEET 1 OF 1	STOCK NO.	9127-01	