

**WARNING!**

**WIRING AND INSTALLATION MUST BE PERFORMED BY A QUALIFIED ELECTRICIAN ONLY. TURN POWER OFF BEFORE INITIAL INSTALLATION, SERVICING, MAINTENANCE AND RELAMPING. FIXTURES SHOULD ALWAYS BE INSTALLED IN ACCORDANCE WITH LOCAL AND NATIONAL ELECTRIC CODES. THIS IS A 12V FIXTURE. FOR USE WITH MAXIMUM 25A, 15V POWER UNITS ONLY. A REMOTE TRANSFORMER IS REQUIRED. USE UL LISTED WATERPROOF WIRE CONNECTORS- CAT NUMBER KING-T6, MANUFACTURED BY KING TECHNOLOGY, INC. OR EQUIVALENT. DO NOT ATTEMPT TO INTERFERE WITH OR REMOVE SIPHON PROTECTION SYSTEM (SPS). TAMPERING WITH SPS voids THE WARRANTY. USE MIN 6PC SUPPLY CONDUCTORS. DO NOT INSTALL THIS FIXTURE IN ANY COMBUSTIBLE MATERIALS.**

**INSTALLATION:**

**FOR CONCRETE POUR APPLICATION:**

If the aiming direction of the oval lens opening is known, then place fixture so that concrete is finished to the top edge of the housing bezel. If aiming direction is not known, then pour to the bottom edge of the housing bezel, so that the bezel can be rotated later. The Wall Housing should be placed on an 8 inch minimum bed of gravel, with soil below to ensure proper drainage. See page 2.

**FOR SOIL BURIAL:**

Excavate soil for housing placement and conduit runs. Contour shape of hole for well housing allowing an additional 3 inch minimum around and 8 inch minimum below the housing for placement of drainage gravel. See page 2.

**RELAMPING AND AIMING:**

**WARNING:**

Turn power off before servicing, maintenance, aiming, or relamping. Use only MR16, 50 watt maximum halogen lamp. Check package and fixture labeling carefully for proper lamp wattage. Only use lamps of proper wattage.

**TO RELAMP:**

Remove the four cap screws from the lens bezel. Lift bezel and lamp assembly out. Remove spring clip that holds lamp in lamp bezel. Pull (do not twist) lamp straight out of lamp socket. Push the new MR16 lamp pins into the two small holes in the lamp socket. Place lamp into lamp bezel from below and secure in place with supplied spring clip. Replace lens bezel with the four cap screws.

**AIMING:**

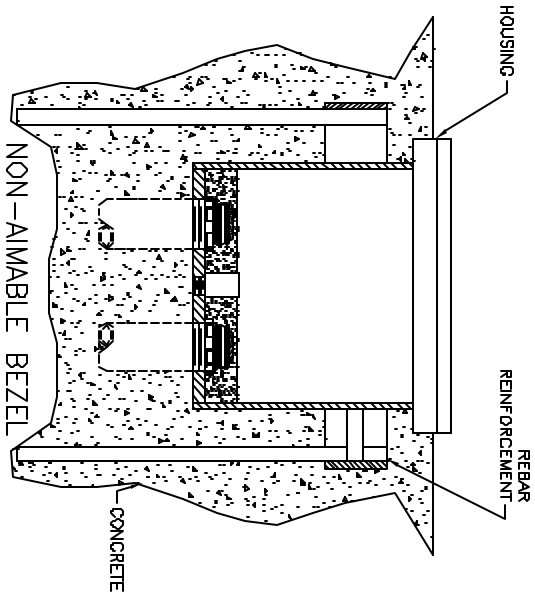
Remove the four cap screws and lift lens bezel up. Loosen the large philips adjustment screw at the base of the well housing. Then rotate mounting ring in desired direction and tighten adjustment screw for a watertight seal. Aim lamp bezel to desired elevation. Lens bezel will align with four bolt holes in mounting ring. Replace lens bezel and four cap screws.

Cooper Lighting Solutions - Lumière reserves the right to make design changes without notice.

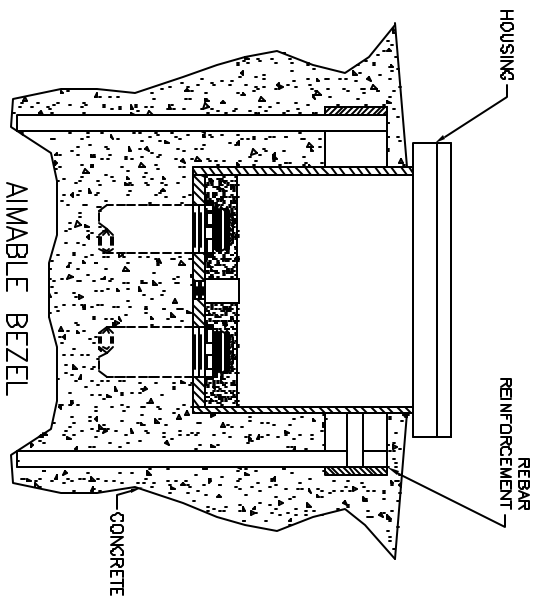
DWG No.	9191	REV.	A
SHEET 1 OF 2			



CONCRETE INSTALLATION

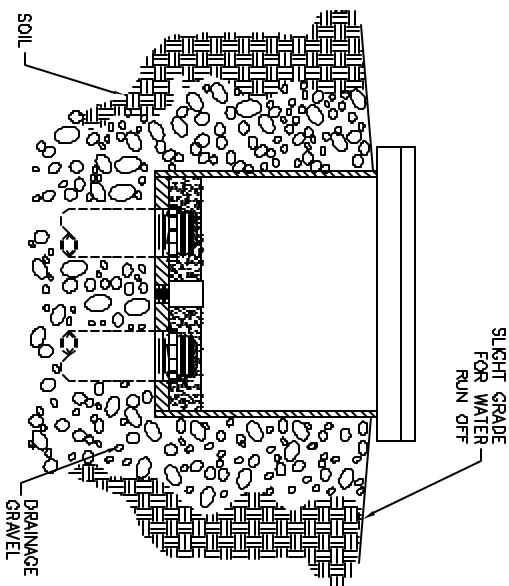


Install this way if aiming direction of oval lens opening is known. The bezel aiming is limited to 90° increments of aiming of the lamp to a different direction if aiming is desired on a later date. This configuration allows for the lowest height of the bezel protruding from ground level.



Install this way if aiming direction of the oval lens opening is not known. This would allow full aiming of the lamp at a later date.

SOIL  
 INSTALLATION



Contour shape of hole for well housing allowing an additional 3" minimum around and 8 inches minimum below the housing for placement of drainage gravel.

CONDUIT LINE SEAL:

Completely seal the bottom conduit hubs. Apply sealing compound (not included) to seal the conduit line hubs. The compound by itself can not seal the hubs. We recommend using reenterable seal material such as 3M High Gel 4442 reenterable encapsulant (not included) to seal the conduit lines.

