

# LUMEC

by  Signify

Roadway

HighFocus gen 2

HFL High mast



## Elevate your freedom with HighFocus

Lumec HighFocus gen 2 LED high mast luminaires help to reduce lighting-related energy costs compared to HID technologies while meeting code requirements, and their long life, backed by Luminaire Useful Life rating, means that maintenance time and related costs are also reduced. HighFocus LED is the high performing, low-maintenance high mast solution that provides managers and work crews with the freedom to focus on other tasks.

### Benefits

- Provides reliable and uniform LED illumination ranging from 400 to 1000W HID replacement.
- Consistent and uniform light levels, from specially-designed discrete LED optics mean that anyone can confidently navigate the well-lit area with ease.
- Fifteen lumen packages available providing up to 113,875 lumens and up to 162 lm/W, so you can customize your high mast solution to maximize your energy saving benefits.
- Switching your HID high mast luminaires to HighFocus LED allows you to achieve comparable photometric performance while utilizing half the number of luminaires\*.
- Long LED life means that drivers aren't frequently inconvenienced by maintenance-related lane or area closures.
- Includes **Service Tag**, an innovative way to provide assistance throughout the life of the product. For more details visit: [philips.com/servicetag](http://philips.com/servicetag)

\* Based on photometric comparison of (8) 400W HPS Type 2 luminaires versus (4) HFL-184L1050NW-G2 and (10) 400W HPS Type 5 luminaires versus (5) HFL-184L1050NW-G2 HighFocus LED luminaires.

# HFL HighFocus gen 2

## LED High mast luminaire

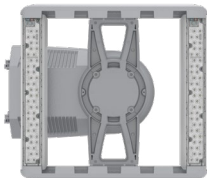


### Applications

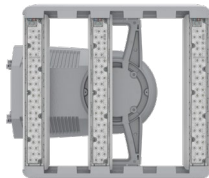
- Multi-lane Freeways and Expressways
- Interchanges
- Major Roads
- Collector Roads
- Adjoining Roadways
- Bridges and Overpasses
- Ports
- Rail yards
- Shipyards

### LED Modules

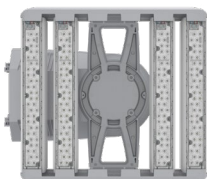
2 modules: 44 lbs / 20.0 kg



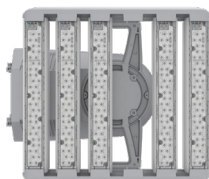
3 modules: 51 lbs / 23.2 kg



4 modules: 59 lbs / 26.8 kg



5 modules: 67 lbs / 30.4 kg



6 modules: 75 lbs / 34.1 kg



### Technical features

Note: Prior to ordering, consult specification sheets on [lumec.com](http://lumec.com) for the most current information, notes and exclusions.

**Optics:** Type II (2), Type III (3), Type IV (4), Type V Medium (5M), Type V Wide (5W)

Note: Entire optical assembly rotatable, enabling alignment of asymmetric optics parallel with roadway to optimize optical performance.

**Color temp.:** 4000K, neutral white and 3000K, warm white

**Luminous flux:** 27,465 - 113,875 delivered lumens

**Efficacy:** up to 162 Lm/W

**Uplight:** U0 = No uplight

**Luminaire Useful Life:** Up to 100,000+ hours with  $>L_{70}$  at 25°C (includes LEDs and drivers)

**Driver:** 0-10V Dimming Driver Standard

**Power:** 192W to 904W (steady state in W, +/- 10%)

**Surge protection:** SP1 standard, SP2 option provides extra surge protection

**Twist-Lock receptacle:** Optional 7-pin NEMA twist lock receptacle available

**Finish:** Gray, Black, Bronze

**IP Rating:** IP66 rated light engines, IP65 rated electrical compartment

**Material:** Low copper die cast aluminum housing and door, anodized aluminum heat sink

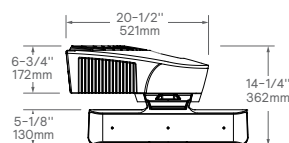
**Vibration:** Meets ANSI C136.31-2018, American National Standard for Roadway Luminaire Vibration specifications for Bridge/overpass applications.

**Mounting:** Fits on 2 3/8" (60mm) O.D. (2" NPS) by 5 1/2" (140mm) minimum long tenon.

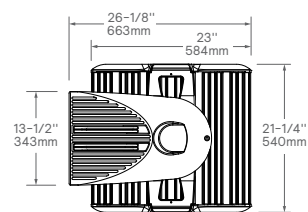
**Warranty:** 10-year limited warranty. See [signify.com/warranties](http://signify.com/warranties) for details and restrictions.

### Dimensions

#### Side View



#### Bottom View



EPA - 1.89 sq. ft.

The information presented in this document is not intended as any commercial offer and does not form part of any quotation or contract.



© 2020 Signify Holding. All rights reserved. This document contains information relating to the product portfolio of Signify which information may be subject to change. No representation or warranty as to the accuracy or completeness of the information included herein is given and any liability for any action in reliance thereon is disclaimed. All trademarks are owned by Signify Holding or their respective owners.

Signify North America Corporation  
200 Franklin Square Drive,  
Somerset, NJ 08873  
Telephone 855-486-2216

Signify Canada Ltd.  
281 Hillmount Road,  
Markham, ON, Canada L6C 2S3  
Telephone 800-668-9008