



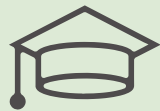


# We make connected communities work.\*

\* **Lighting the way for connected communities.** Smart, connected technologies mean safer, more efficient communities – and it starts with connected lighting. Our solutions put system control and optimization at your fingertips, helping you make things better.



Municipal



Campus



Roadway



Parks



Parking



# Delivering unparalleled performance

No matter the complexity of your project, we offer a range of LED products that lower operating costs, reduce energy consumption, and enhance outdoor spaces. Whether you're looking for simple dusk-to-dawn security lighting or cutting-edge functionality, you'll find unmatched quality and attention to detail.

In other words, these products don't just meet standards. They set the standards.

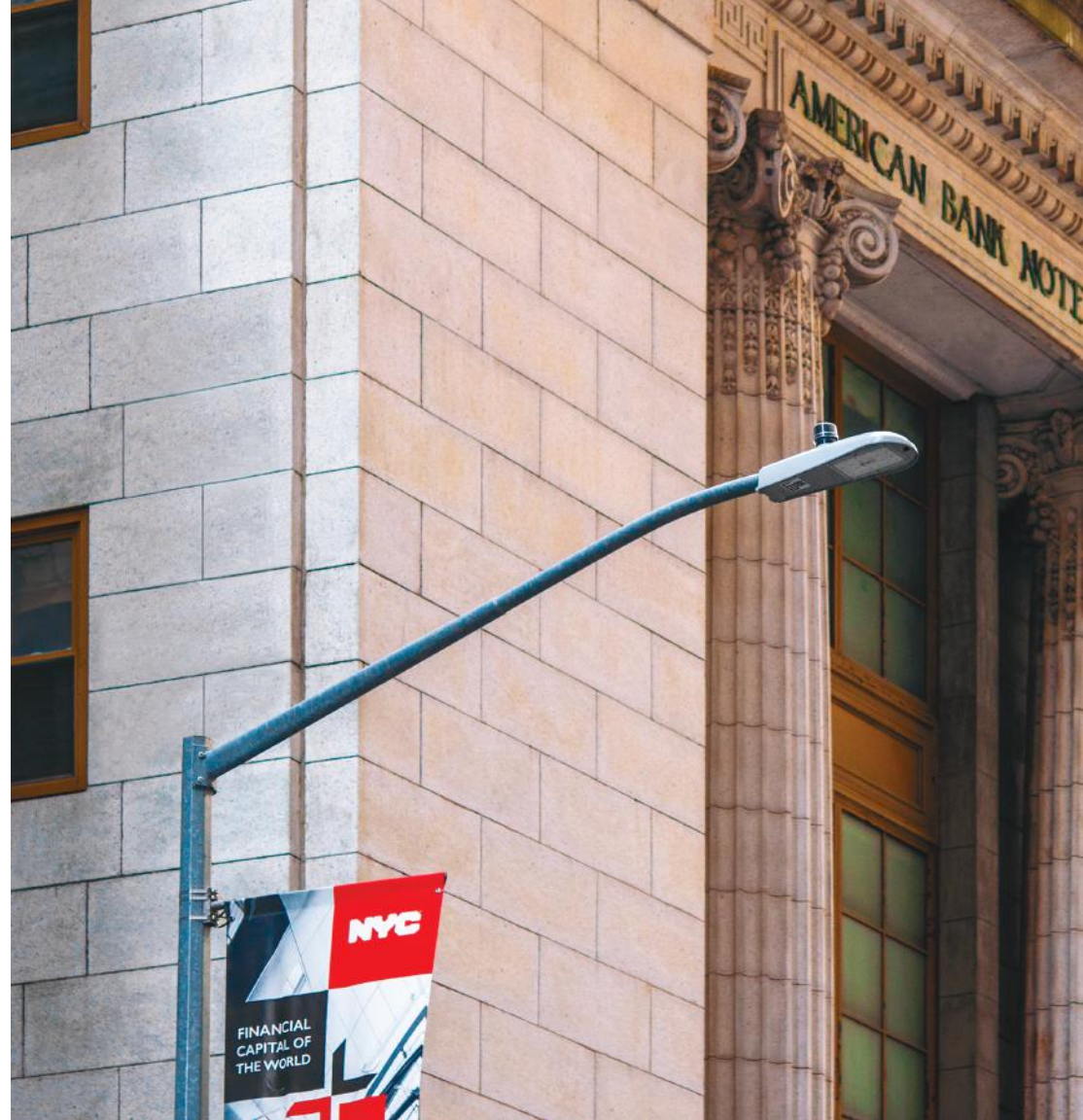
The Streetworks portfolio offers thoughtfully-engineered solutions for a range of applications.

- 4 Roadway Lighting
- 6 Floodlighting
- 8 Decorative Lighting
- 10 Area / Site Lighting
- 12 Pathway Lighting
- 14 Architectural Lighting
- 16 Lighting Controls
- 18 LumenSafe (Lighting and Surveillance Solution)
- 19 Poles



# Roadway Lighting

When it comes to street lighting, there's no one-size-fits-all. Cooper Lighting Solutions offers a broad array of efficient, durable, controls-ready LED luminaires with precision optics that deliver desired white light in a wide range of distributions. ANSI standard receptacles accommodate simple daylight sensing systems and sophisticated wireless control nodes for energy efficient utilization. And with easy-installation features – like tool-less latches and integrated leveling steps – you'll save on upfront labor and maintenance.



# Roadway



**Archeon Large**  
Roadway Luminaire  
■ LumenSafe ■ Enlighted



**Archeon Medium**  
Roadway Luminaire  
■ Enlighted



**Verdeon Medium**  
Roadway Luminaire



**Navion**  
Roadway Luminaire  
■ LumenSafe ■ Enlighted



**Archeon Small**  
Roadway Luminaire



**Archeon Nano**  
Roadway Luminaire



**Verdeon**  
Roadway Luminaire



**XNV2 LED**  
Roadway Luminaire



**Celesteon**  
Roadway Luminaire



**Caretaker**  
Roadway Luminaire



**Caretaker2**  
Roadway Luminaire



**XNV LED**  
Roadway Luminaire



# Floodlighting

With a range of optical distributions, lumen packages and controls compatibility, Cooper Lighting Solutions is your source for efficient, reliable general purpose LED utility and flood lighting. In addition, our products are compatible with existing mountings and refractors to minimize up-front expense, giving you better ROI.



# Floodlighting



**UFLD Utility Flood**  
Floodlight



**UFLD-S Small Utility Flood**  
Floodlight



**UFLD-L Large Utility Flood**  
Floodlight



**Galleon Flood**  
Floodlight  
■ Enlighted



# Decorative Lighting

It takes lots of careful planning and design to create safe, inviting neighborhoods and campuses. Your lighting should be just as thoughtful. Our decorative lighting harmoniously accentuates its surroundings, blending in during the day and enhancing walkability at night. With a range of styles, from traditional to contemporary, you're sure to find the perfect fit.





# Decorative Lighting



**Utility LED Acorn**  
Decorative Post Top Luminaire



**Generation Series**  
Decorative Post Top Luminaire



**Generation Series Avenue**  
Decorative Post Top Luminaire



**Mesa**  
Decorative Post Top Luminaire  
■ Enlighted



**Traditionaire**  
Decorative Post Top Luminaire



**Lexington**  
Decorative Post Top Luminaire



**Woodbridge**  
Decorative Post Top Luminaire



**Breckenridge**  
Decorative Post Top Luminaire



**New Haven**  
Decorative Post Top Luminaire

Coming soon

# Area / Site Lighting

Thoughtful area lighting can mean the difference between a bustling retail space and no-man's-land at night. Keep patrons feeling safe in parking areas, retail complexes, automotive lots and more, with our impressive selection of LED area and site lighting.

Designed to enhance security and aesthetics while meeting even the most demanding trespass specifications, these solutions feature zero uplight and tightly-controlled backlight. Precision optics mean there's no project or zone that's too complex. Plus, durable construction and reliable light engines deliver years of worry-free performance.





## Area / Site Lighting



**Caretaker2**  
Area / Site Luminaire



**USSL**  
Area / Site Luminaire



**Galleon**  
Area / Site Luminaire  
■ LumenSafe ■ Enlighted



**Galleon Pedestrian Companion**  
Area / Site Luminaire  
■ Enlighted



**Galleon Pedestrian Companion**  
Area / Site Luminaire

# Pathway Lighting

Effective pathway lighting helps guide people to their destinations and boosts safety. Cooper Lighting Solution's pathway lighting offers advanced features like AccuLED Optics, IP66 vibration ratings, and programmable settings. Designed for uniformity and energy efficiency, these solutions are perfect for schools, tunnels, vehicle ramps, loading docks, and more.





## Pathway Lighting



**WPSLED**  
Wall Mount Luminaire



**WPMLED**  
Wall Mount Luminaire



**Galleon Wall**  
Wall Mount Luminaire



**WPLLED**  
Wall Mount Luminaire



**WPSQLED**  
Wall Mount Luminaire



**Wal-Pak Full Cutoff**  
Wall Mount Luminaire



**Wal-Pak Glass**  
Wall Mount Luminaire



**Valet**  
Tunnel / Underpass Luminaire

# Architectural Lighting

For unequalled form and functionality, look no further. These products prove why Cooper Lighting Solutions is a long-standing leader in architectural and commercial lighting, marrying technology and performance with elegant, original design. Make a bold statement and modernize the look of your community with our architectural solutions.





## Architectural Lighting



**LuxeScape Spider Mount**  
Architectural Area Luminaire  
■ Enlighted



**LuxeScape Cantilever Mount**  
Architectural Area Luminaire



**LuxeScape Arm Mount**  
Architectural Area Luminaire



**Arbor Post Top**  
Architectural Post Top Luminaire



**Metroline**  
Architectural Roadway Luminaire

# Lighting controls

From basic motion sensing and daylight harvesting to full system management and optimization, we offer control options for every situation. Our solutions are designed for scalability, so you can tackle today's challenges while you continue to improve and optimize into the future.

**Here are some of the latest controls in our lineup.  
For more options, contact your Cooper Lighting Solutions sales representative.**

- 17 **Lighting Controls**
- 18 **LumenSafe (Lighting and Surveillance Solution)**



# Lighting Controls

|   | Stand-alone Sensors<br>(MS & MSP) | WaveLinx            | Enlighted                       |
|---|-----------------------------------|---------------------|---------------------------------|
| <b>Space type</b>                                   | Area/Site                         | Area/Site           | Area/Site                       |
| <b>Stand-alone or Network</b>                       | Stand-alone                       | Both                | Both                            |
| <b>Wireless technology</b>                          |                                   | 802.15.4            | 802.15.4                        |
| <b>Sensing technology</b>                           | Integrated Motion / Photosensor   | Photosensor (7-PIN) | Integrated Motion / Photosensor |
| <b>Need-based feature progression</b>               |                                   |                     |                                 |
| <b>Basic compliance only</b>                        | ✓                                 | ✓                   | ✓                               |
| <i>Motion sensing</i>                               | ✓                                 |                     | ✓                               |
| <i>Daylight harvesting</i>                          | ✓                                 | ✓                   | ✓                               |
| <i>Zone control</i>                                 |                                   | ✓                   | ✓                               |
| <i>Scheduling</i>                                   |                                   | ✓                   | ✓                               |
| <i>0-10V dimming</i>                                | ✓                                 | ✓                   | ✓                               |
| <i>Individual fixture control</i>                   | ✓                                 | ✓                   | ✓                               |
| <b>Area/site building integration</b>               |                                   | ✓                   | ✓                               |
| <i>A/V integration</i>                              |                                   | ✓                   | ✓                               |
| <i>BMS integration</i>                              |                                   | ✓                   | ✓                               |
| <i>UI options (touchscreen, apps, etc.)</i>         |                                   | ✓                   | ✓                               |
| <b>Enterprise level building integration</b>        |                                   | ✓                   | ✓                               |
| <i>Facility management &amp; tools</i>              |                                   | ✓                   | ✓                               |
| <i>Site plan and reporting</i>                      |                                   |                     | ✓                               |
| <b>Value-added services</b>                         |                                   |                     | ✓                               |
| <i>Asset tracking</i>                               |                                   |                     | ✓                               |
| <i>API integration</i>                              |                                   | ✓                   | ✓                               |
| <i>Analytics/higher problem solving</i>             |                                   |                     | ✓                               |
| <b>Cost progression</b>                             |                                   |                     |                                 |
| <i>Installation cost (controls &amp; fixtures)*</i> | \$                                | \$\$                | \$\$\$                          |
| <i>Commissioning cost*</i>                          | \$                                | \$\$                | \$\$\$                          |
| <i>Return on investment*</i>                        | \$                                | \$\$                | \$\$\$                          |

\* Based on same coverage area installed with Cooper Lighting Solutions fixtures.

# All-in-one lighting and surveillance solution This changes everything

Lighting can provide the backbone for safer communities and cities through smarter surveillance and enhanced data. Cooper Lighting Solution's camera-integrated luminaires are an easy win for you and your customers.

## 30% Lower install cost

Reduce install cost by up to 30%.

## All-in-one solution

Easy installation with our all-in-one LumenSafe solution. Integrated camera and networking equipment means no additional wiring is needed beyond providing line power to the luminaire.

## Flexible integration

LumenSafe is compatible with virtually any video management system or security platform.

## Remote monitoring

Protect valuable goods and inventory from theft or vandalism remotely. Axis Communications cameras provide users with crystal clear high-quality images.



**Galleon**  
Area / Site Luminaire



**Navion**  
Area / Site and Roadway Luminaire



**Archeon Large**  
Roadway Luminaire

## Safe communities and cities start here



LED  
light fixtures



Integrated  
video camera



Flexible backhaul options  
(Cellular, Wi-Fi, Ethernet)



Software  
services



**LumenSafe**  
simplified  
integration



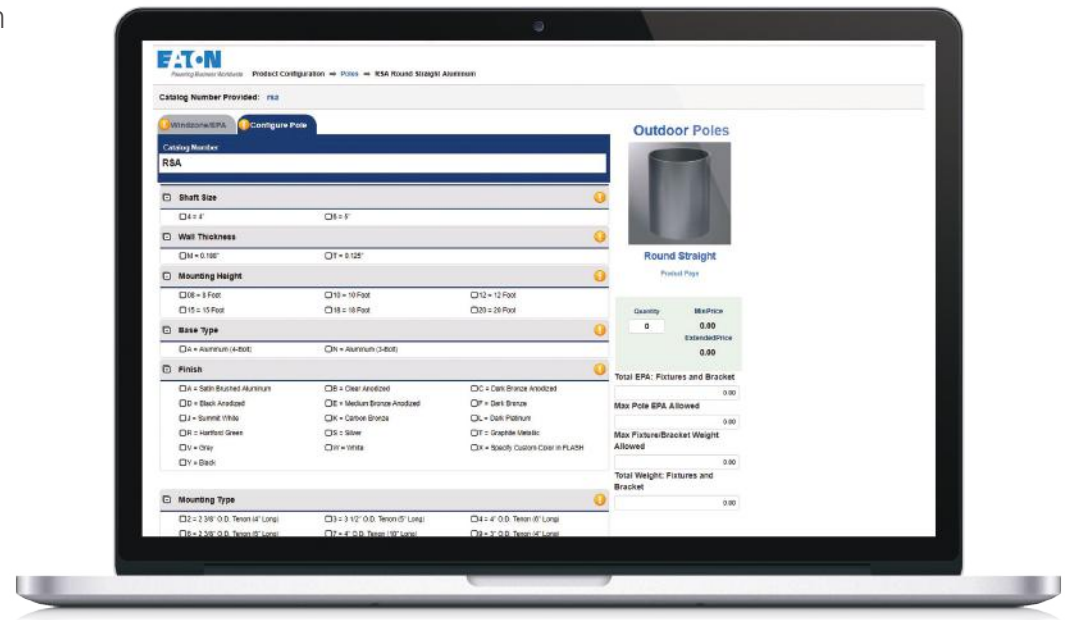
# Pole Configurator

We're among the select few American lighting companies who manufacture their poles in-house. This allows for superior quality control and end expertly-tailored end products that meet market needs. Our online pole configurator tool can help you select the poles that are right for your project.

- Instant EPA loading and weight requirement calculation (to prevent pole overloading)
- Instant catalog SKU validation
- Information on third-party luminaire compatibility
- Option to select anchor bolts, with templates to ensure proper pole anchorage

Take the guesswork out of the equation, for faster order processing and an all-around smooth process.

Configurator can be located on any of the poles product pages.



### Lighting Product Lines

Ametrix  
AtLite  
Corelite  
Ephesus  
Fail-Safe  
Halo  
Halo Commercial  
Halo Outdoor  
Invue  
io  
Iris  
Lumark  
Lumière  
McGraw-Edison  
Metalux  
MWS  
Neo-Ray  
Portfolio  
RSA  
Shaper  
Streetworks  
Sure-Lites

### Controls Product Lines

Fifth Light Technology  
Greengate  
iLight (International Only)  
iLumin  
Zero 88

### Connected Lighting Systems

Distributed Low-Voltage Power  
Halo Home  
iLumin Plus  
Enlighted  
WaveLinX



## Streetworks | LED Lighting Solutions Product portfolio



**Cooper Lighting Solutions**  
1121 Highway 74 South  
Peachtree City, GA 30269  
P: 770-486-4800  
[www.Cooperlighting.com/lighting](http://www.Cooperlighting.com/lighting)

**Canada Sales**  
5925 McLaughlin Road  
Mississauga, Ontario L5R 1B8  
P: 905-501-3000  
F: 905-501-3172

© 2020 Cooper Lighting Solutions  
All Rights Reserved  
Printed in USA  
Publication No. BR525101EN  
April 2020

Cooper Lighting Solutions is a registered trademark.

All other trademarks are property of their respective owners.

Product availability, specifications, and compliances are subject to change without notice.