

LIGHTBAR TECHNOLOGY



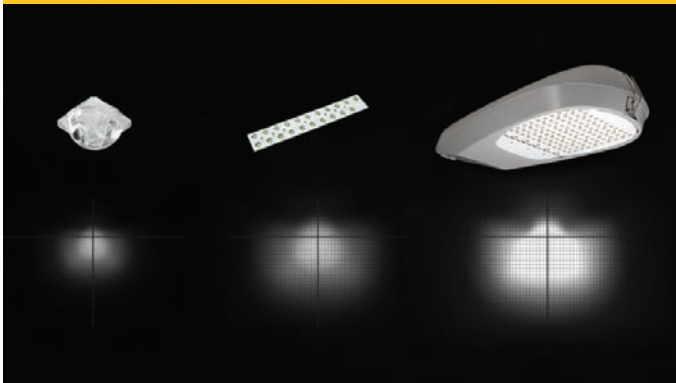
ENERGY SAVINGS + ENVIRONMENTAL STEWARDSHIP

The simplest and most effective way to reduce a lighting fixture's impact on the environment is to minimize its energy consumption. By incorporating Cooper Lighting's patented LED LightBAR™ technology, RL LED Cobrahead provides energy savings between 30-75% over standard HID sources.

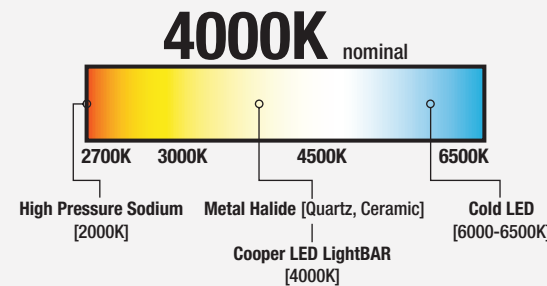
LONG LIFE

With a 50,000+ hour rated life at 70% lumen maintenance, RL LED Cobrahead operates three times longer than traditional high pressure sodium sources.

SCALABLE ILLUMINATION



WARM WHITE COLOR



Each patented LED LightBAR optic renders the entirety of the pattern. As the number of LightBAR elements increase so does the application illuminance, allowing lumen and energy output to be scaled and optimized per application. Obtrusive spill light and glare is replaced by uniform, application-specific illumination.

Lighting designers, architects and specifying engineers have long preferred light sources that provide a balanced spectral power distribution and warm white light. Typical LED solutions standardize on a cold blue 6000-6500K correlated color temperature [CCT] to maximize lumen output. RL LED Cobrahead provides warm white light at a standard 4000K CCT with no sacrifice in lumen output.

AccuLED Optics™



SUPERIOR EFFICIENCY + CONTROL

With efficiencies as high as 95%, patented AccuLED Optics™ systems are as much as 30% more efficient than traditional HID optical systems. Available in thirteen [13] beam distributions, AccuLED Optics systems provide the flexibility and performance required for any outdoor application.

RL LED COBRAHEAD

ORDERING INFORMATION

SAMPLE NUMBER: LDRL-T3S-B06-E

LAMP TYPE

LD=Solid State Light Emitting Diodes [LED]

SERIES

RL=Luminaire

DISTRIBUTION

T2=Type II
T3=Type III
T3S=Type III Short
T4=Type IV
5WQ=Type V Square Medium
5WQ=Type V Square Wide
5XQ=Type V Square Extra Wide
RW=Rectangular Wide
SL2=Type II w/Spill Control
SL3=Type III w/Spill Control
SL4=Type IV w/Spill Control
SLL=90° Spill Light Eliminator Left
SLR=90° Spill Light Eliminator Right

NUMBER OF LIGHTBARS^{1,2}

B01=[1] 21 LED LightBAR
B02=[2] 21 LED LightBARS
B03=[3] 21 LED LightBARS
B04=[4] 21 LED LightBARS
B05=[5] 21 LED LightBARS
B06=[6] 21 LED LightBARS
C01=[1] 7 LED LightBAR
C02=[2] 7 LED LightBARS
C03=[3] 7 LED LightBARS
C04=[4] 7 LED LightBARS
C05=[5] 7 LED LightBARS
C06=[6] 7 LED LightBARS

VOLTAGE

E=Electronic [Universal 120-277V]
347=347V
480=480V

OPTIONS & ACCESSORIES

[See below]

OPTIONS & ACCESSORIES [Must be listed in the order shown and separated by a dash]

OPTIONS³

BK=Black
BZ=Bronze
K=Level Indicator
HA=50° C High Ambient Temperature Rating⁴
L90=Optics Rotated Left 90°
R90=Optics Rotated Right 90°
PC=Button Type Photocontrol [Specify Voltage]

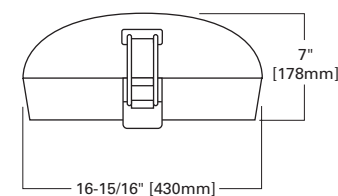
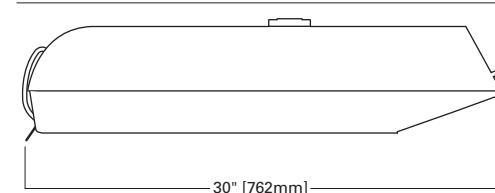
PER=NEMA Twistlock Photocontrol Receptacle
2L=Bi-Level Switching Capable⁵
7060=70CRI/6000K CCT⁶
8030=80CRI/3000K CCT⁶
LCF=LightBAR Cover Plate Matches Housing Finish
BBLEDCLD=UL924 LED Cold Battery Back-up [Specify Voltage]

ACCESSORIES⁷

0A/RA1013=Shorting Cap
0A/RA1014=Photoelectric Control, 120 Volt NEMA Type
0A/RA1016=Photoelectric Control, 105-285 Volt NEMA Type
0A/RA1201=Photoelectric Control, 347 Volt NEMA Type
0A/RA1207=Photoelectric Control, 480 Volt NEMA Type
MA1252=10kV Surge Module Replacement

NOTES: 1 Standard 4000K CCT and 70 CRI nominal. 2 21 LED LightBAR powered at 350mA, 7 LED LightBAR powered at 1A. 3 Add as suffix. 4 Not available with BBLEDCLD option. 5 Not available with 347V or 480V. 6 Consult factory for lead time and lumen multiplier. 7 Order separately. 8 Specifications and dimensions subject to change without notice.

DIMENSIONS



CERTIFICATIONS

UL and cUL Listed
3G Vibration Rated
ISO 9001
IP66 LightBARS
ARRA Compliant

ENERGY DATA

Electronic LED Driver
≥0.9 Power Factor
<20% Total Harmonic Distortion
120-277V/50 & 60Hz, 347V/60Hz, 480V/60Hz
40°C Ambient Temperature Rating
50°C [Optional] Ambient Temperature Rating
-30°C Minimum Temperature

AMBIENT DATA

Ambient Temperature
10°C
15°C
25°C
40°C
50°C

Lumen Multiplier
1.04
1.03
1.00
0.96
0.92

EPA

Effective Projected Area [sq. ft]
1-6 Bars 0.87

SHIPPING DATA

Approximate Net Weight
1-6 Bars 35 [15.91 kgs.]



25% PCRF

Cooper Lighting, Lumark, SustainLEDesign, LightBAR and AccuLED Optics are valuable trademarks of Cooper Industries in the United States and other countries. You are not permitted to use the Cooper Trademarks without the prior written consent of Cooper Industries.

Cooper Lighting, LLC
1121 Hwy 74 South
Peachtree City, Georgia 30269
P: 770-486-4800
www.cooperlighting.com

ADH111429

Printed in USA



Sustainable Design

RL LED Cobrahead
Roadway/Site Luminaire





INNOVATION IN ACTION



The Cooper name has stood for innovation, service and expertise for over 175 years. Today, Cooper Lighting's LED Innovation Center is home to the design, validation and manufacturing of proprietary LED technologies. Through changing times and technologies, Cooper answers the call to provide relevant, industry-leading solutions to evolving market needs.

BEST-IN-CLASS DESIGN AND RELIABILITY



Precision design practices and rigorous reliability testing result in dependable luminaires that thrive in outdoor environments. RL LED Cobrahead is rated for operation in -30°C to 40°C ambient environments [for 50°C ambient, specify HA option], comes equipped with 10kV transient surge protection and is backed by a five-year warranty from a world class manufacturer.

FEATURES AND BENEFITS



FINISH
Components finished in a standard grey 5-stage Super TGIC polyester powder coat paint. Black, bronze, white, RAL and custom color matches available.

CONSTRUCTION

Heavy-duty cast aluminum housing and removable door 3G vibration rated to ensure strength of construction and longevity in application. Die-cast aluminum door features integral hinges for tool-less maintenance access.

ELECTRICAL

LED driver hard mounts to die-cast aluminum back casting for optimal heat sinking and operational efficiency. Standard three-position tunnel type compression terminal block. RL LED Cobrahead is shipped standard with a replaceable circuit module [MA1253] incorporating internal fusing and MOVs designed to survive a 10kV BIL surge test.

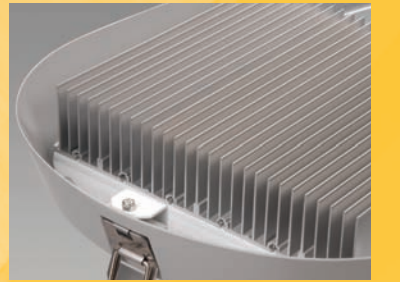


ACCULED OPTICS™

AccuLED Optics provide shaped distributions and scalability to meet exacting application requirements. RL LED Cobrahead is offered in 1-6 LightBAR™ configurations with a choice of thirteen [13] high efficiency optical systems, including a family of spill light eliminator optics [SL] to drastically reduce spill light behind the luminaire. Optional factory-set optic rotation [L90 or R90] allows uniform product orientation on the site independent of optical orientation. LightBARs feature an IP66 enclosure rating.

POWER AND LUMENS BY NUMBER OF LIGHTBARS

Number of LightBARs	Power [Watts]	DISTRIBUTION											
		T2	T3	T3S	T4	SL2	SL3	SL4	5MQ	5WQ	5XQ	RW	SLR/SLL
7 LED LIGHTBAR													
C01	27	1,819	1,798	1,757	1,811	1,805	1,746	1,734	1,923	1,930	1,868	1,834	1,660
C02	54	3,509	3,469	3,391	3,495	3,484	3,368	3,347	3,711	3,724	3,605	3,540	3,203
C03	77	5,291	5,230	5,112	5,269	5,252	5,078	5,046	5,594	5,614	5,436	5,337	4,829
C04	101	6,983	6,902	6,747	6,954	6,932	6,703	6,660	7,383	7,410	7,174	7,043	6,373
C05	131	8,362	8,265	8,079	8,327	8,300	8,026	7,975	8,841	8,872	8,590	8,434	7,631
C06	154	10,119	10,002	9,777	10,077	10,045	9,712	9,651	10,699	10,737	10,396	10,206	9,235
21 LED LIGHTBAR													
B01	27	2,237	2,211	2,161	2,228	2,220	2,147	2,133	2,365	2,374	2,298	2,256	2,041
B02	51	4,317	4,267	4,171	4,299	4,285	4,143	4,117	4,564	4,580	4,435	4,354	3,940
B03	73	6,508	6,433	6,288	6,481	6,460	6,246	6,207	6,881	6,906	6,686	6,564	5,939
B04	95	8,589	8,490	8,299	8,554	8,526	8,244	8,192	9,081	9,114	8,824	8,663	7,839
B05	124	10,285	10,166	9,938	10,242	10,209	9,871	9,809	10,874	10,913	10,566	10,373	9,386
B06	146	12,446	12,302	12,026	12,395	12,355	11,946	11,871	13,159	13,207	12,786	12,554	11,359



ALUMINUM HEAT SINKS
Thermal management incorporates both conduction and natural convection to transfer heat rapidly away from the LED source and retain optimal efficiency and light output.



MOUNTING
Two-bolt/one bracket slipfitter with cast-in pipe stop and leveling steps. Fixed-in-place birdguard seals around 1-1/4" or 2" mounting arms.