

Catalog # :

Project :

Prepared By :

Date :

# Slice Medium - PXSLM Outdoor LED Area Light & Pole



The Slice area light's unique, sleek design and technologically advanced features renders it ideal, for Commercial & Industrial applications. Paired with our poles, this complete lighting solution provides our customers the highest quality manufacturing coupled with a dedicated quick-ship program.

## Fixture Features & Specifications

### Optical System

- State-of-the-Art one piece silicone optic sheet delivers industry leading optical control with an integrated gasket to provide IP66 rated sealed optical chamber in 1 component.
- Proprietary silicone refractor optics provide exceptional coverage and uniformity in IES Types 3, 5W and FT.
- Silicone optical material does not yellow or crack with age and provides a typical light transmittance of 93%.
- Zero uplight.
- Available in 5000K and 4000K color temperatures per ANSI C78.377.
- Minimum CRI of 70.

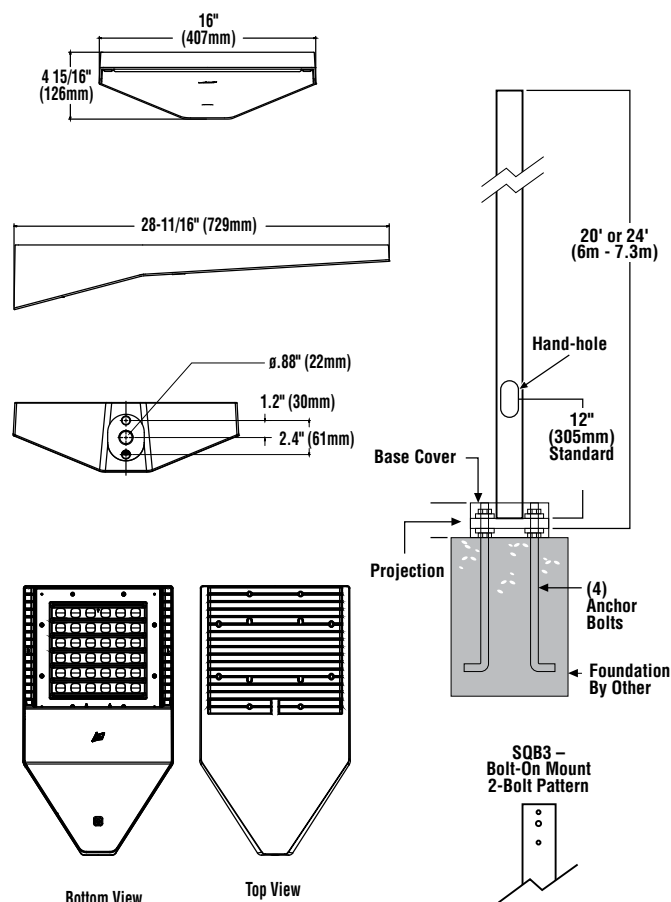
### Electrical

- High-performance driver features over-voltage, under-voltage, short-circuit and over temperature protection.
- 0-10V dimming (10% - 100%) standard.
- Standard Universal Voltage (120-277 Vac) Input 50/60 Hz or optional High Voltage (347-480 Vac)
- L80 Calculated Life: >100k Hours (See Lumen Maintenance on Page 3)
- Total harmonic distortion: <20%
- Operating temperature: -40°C to +50°C (-40°F to +122°F).
- Power factor: >.90
- Input power stays constant over life.
- Field replaceable surge protection device meets a minimum Category C Low operation (per ANSI/IEEE C62.41.2).
- High-efficiency LEDs mounted to metal-core circuit board to maximize heat dissipation
- Terminal block provided accepts up to 10ga wire.
- Components are fully encased in potting material for moisture resistance. Driver complies with FCC standards. Driver and key electronic components can easily be accessed.

IP66



## Product Dimensions





# Slice Medium - PXSLM Outdoor LED Area Light & Pole

## Features & Specifications (Cont.)

### Construction

- Rugged die-cast aluminum housing contains factory prewired driver and optical unit. Cast aluminum wiring access door located underneath.
- Designed to mount to square poles.
- Luminaire is proudly manufactured in the U.S. of U.S. and imported parts.
- IP66 rated luminaire protects integral components from harsh environments.
- 3G rated for ANSI C136.31 high vibration applications
- Fixtures are finished with LSI's DuraGrip® polyester powder coat finishing process. The DuraGrip finish withstands extreme weather changes without cracking or peeling.
- Shipping weight: 30 lbs in carton.

### Fixture Installation

- A single fastener secures the hinged door, underneath the housing and provides quick & easy access to the electrical compartment for installing/ servicing.
- Included terminal block provides quick and easy on-site wiring.
- Utilizes LSI's traditional 3" drill pattern for easy fastening of LSI products. (See drawing on page 1)

### Warranty

- LSI LED Fixtures carry a 5-year warranty.

### Listings

- Listed to UL 1598 and UL 8750.
- RoHS Compliant.
- American Recovery and Reinvestment Act Funding Compliant.
- Suitable For wet Locations.
- IP66 rated Luminaire. IP66 rated optical chamber.
- 3G rated for ANSI C136.31 high vibration applications

## Performance

ELECTRICAL DATA (AMPS)*					
Lumens	Watts	120V	208V	240V	277V
18L	148.5	1.2A	0.7A	0.6A	0.5A
24L	188.8	1.6A	0.9A	0.8A	0.7A
30L	248.6	2.1A	1.2A	1.0A	0.9A

\*Electrical data at 25C (77F). Actual wattage may differ by +/-10%

RECOMMENDED LUMEN MAINTENANCE <sup>1</sup> (24-30L)					
Ambient	Initial <sup>2</sup>	25 hr <sup>2</sup>	50 hr <sup>2</sup>	75 hr <sup>3</sup>	100 hr <sup>3</sup>
0-40 C	100%	100%	97%	94%	92%

RECOMMENDED LUMEN MAINTENANCE <sup>1</sup> (18L)					
Ambient	Initial <sup>2</sup>	25 hr <sup>2</sup>	50 hr <sup>2</sup>	75 hr <sup>3</sup>	100 hr <sup>3</sup>
0-50 C	100%	96%	91%	87%	83%

- 1- Lumen maintenance values at 25C are calculated per TM-21 based on LM-80 data and in-situ testing.
- 2- In accordance with IESNA TM-21-11, Projected Values represent interpolated value based on time durations that are within six times the IESNA LM-80-08 total test duration for the device under testing.
- 3- In accordance with IESNA TM-21-11, Calculated Values represent time durations that exceed six times the IESNA LM-80-08 total test duration for the device under testing

LUMINAIRE EPA CHART - SLM		
Tilt Degree		0°
■	Single	0.5
■-■	D180°	1.1

Specifications and dimensions subject to change without notice.



# Slice Medium - PXSLM Outdoor LED Area Light & Pole

DELIVERED LUMENS*									
Lumen Package	Distribution	CRI	4000K CCT			5000K CCT			Wattage
			Delivered Lumens	Efficacy	BUG Rating	Delivered Lumens	Efficacy	BUG Rating	
18L	3	70	19310	129	B3-U0-G3	20107	134	B3-U0-G3	150
	5W	70	18379	123	B4-U0-G2	19138	128	B5-U0-G3	
	FT	70	18781	126	B3-U0-G4	19557	131	B3-U0-G4	
24L	3	70	25275	135	B3-U0-G4	25804	138	B3-U0-G4	187
	5W	70	23988	128	B5-U0-G3	24490	131	B5-U0-G3	
	FT	70	25126	134	B3-U0-G4	25652	137	B3-U0-G4	
30L	3	70	32176	130	B3-U0-G3	32850	133	B3-U0-G4	247
	5W	70	30538	124	B5-U0-G4	31177	126	B5-U0-G4	
	FT	70	31987	130	B3-U0-G4	32656	132	B3-U0-G5	

\*LED Chips are frequently updated therefore values are nominal

### Ordering Guide\*

Product Series	Distribution	Lumens-Quantity	Voltage	CCT	Square Straight Pole	Color	Anchor Bolts
PXSLM	3 - Type 3 5W - Type 5 Wide FT - Forward Throw	18L - 18,000 1 - Single Head 24L - 24,000 2 - Double Head 30L - 30,000 @180 Deg.	(Blank) - Universal Voltage (120-277V) HV - High Voltage(347-480V)	40 - 4000K 50 - 5000K	4SQ20 - 4", 20 feet 11-gauge 4SQ24 - 4", 24 feet 11-gauge	(Blank) - Bronze Finish	AB - with anchor bolts/ template LAB - Less anchor bolts/ template

Example: **PXSLM 3 18L-1 40 4SQ20 AB**

\*Only available in Universal Voltage 120-277.

\*\* Combos come standard with base cover included.

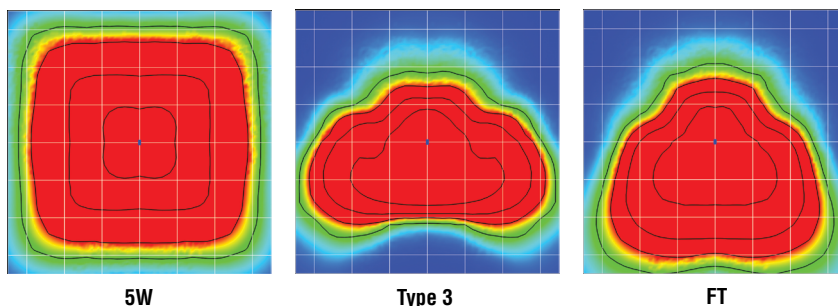
### To Find DLC Qualification Use Nomenclature Below

SLM	LED	18L 24L 30L	SIL	3 5W FT	40 50	70 CRI
-----	-----	-------------------	-----	---------------	----------	--------

\*Please visit [www.designlight.org](http://www.designlight.org) for complete sku listings.

## Performance (Cont.)

All published luminaire photometric testing performed to IESNA LM-79 standards. ISO footcandle plots below demonstrate the Slice (SLM) light patterns only. Not for total fixture output. For complete specifications and IES files, see website.



Specifications and dimensions subject to change without notice.



# Slice Medium - PXSLM Outdoor LED Area Light & Pole

## Steel Square Pole Features & Specifications

### Pole Shaft

Pole shaft is electro-welded ASTM-A500 Grade C steel tubing with a minimum yield strength of 50,000 psi. Straight poles are 4" square.

### Hand-Hole

Standard hand-hole location is 12" above pole base. Poles 22' and above have a 3" x 6" reinforced hand-hole. Shorter poles have a 2" x 4" non-reinforced hand-hole.

### Base

Pole base is ASTM-A36 hot-rolled steel plate with a minimum yield strength of 36,000 psi. Two-piece square base cover is standard.

### Anchor Bolts

Poles are furnished with anchor bolts featuring zinc-plated double nuts and washers. If anchor bolts are not required, order the LAB option. Anchor bolts conform to ASTM F 1554-07a Grade 55 with a minimum yield strength of 55,000 psi.

### Ground Lug

Ground lug is standard.

### Finishes

Each pole is finished with DuraGrip®, LSI's baked-on polyester-powder finishing process which electrostatically applies and fuses a polyester powder to the pole. Provides an extremely smooth and uniform finish to withstand extreme weather changes without cracking or peeling, and features a five-year limited warranty.

#### SHIPPING WEIGHTS - Steel Square Poles

4"(102mm) sq. 11 Ga. is approximately	7.50 lbs./ft.
Anchor Bolts (3/4" x 30")(19mm x 762mm)	15 lbs. (7kg)/set

