



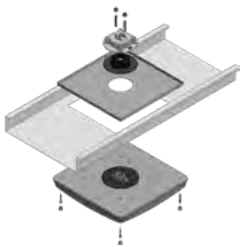
Catalog # : \_\_\_\_\_ Project : \_\_\_\_\_

Prepared By : \_\_\_\_\_ Date : \_\_\_\_\_

# Scottsdale Vertex SCV Petroleum

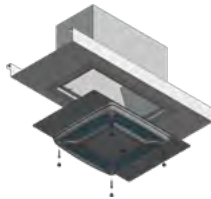
## Retrofit Kit Ordering Information

To Retrofit Product	New Construction	Installation Method(s) to identify necessary accessories (Follow all installation instructions)	Part Number
New Construction	New Construction	Use LSI supplied conduit stem with new LSI Junction Box.	687461
LSI Scottsdale	4" Hole	Remove existing fixture and use LSI included conduit stem with existing Scottsdale ballast box.	
		Remove existing Scottsdale and use LSI included conduit stem with new LSI Junction Box.	687461
LSI CRU/CRUS	4" Hole (possibly with EC plates)	Remove existing fixture and use LSI included conduit stem with new LSI Junction Box.	687461
CRU/CRUS Adaptor Kit	Single or Double deck canopy CRU/CRUS existing die cast driver box	Remove existing CRU or CRUS optical assembly and retrofit SCV to existing CRU/CRUS driver box - no need to retrofit existing conduit. No additional junction box required.	687462R2
LSI Encore Top Access (ECTA) LSI SCF	16" deck pan with 9" round hole	Remove existing fixture and use LSI included conduit stem with existing ECTA/SCF ballast box and Encore 16" Kit.	673425R2
		Remove existing fixture and use LSI included conduit stem with LSI Junction Box and new Encore 16" Kit.	673425R2
	12" deck pan with 9" round hole	Remove existing fixture and use LSI included conduit stem with existing ECTA/SCF ballast box and Encore 12" Kit.	676011R2
		Remove existing fixture and use LSI included conduit stem with new LSI Junction Box and new Encore 12" Kit.	687461 676011R2
LSI Encore (bottom access) Cree 304	16" deck pan with 12" square hole	Remove existing fixture and use LSI included conduit stem with new LSI Junction Box and new Encore 16" Kit.	687461 673425R2
Cree CAN-228 30 LED	16" deck pan with 7.375" x 11.375" rectangular hole	Remove existing fixture and use LSI included conduit stem with new LSI Junction Box and new Encore 16" Kit.	687461 673425R2
	12" deck pan with 7.375" x 11.375" rectangular hole	Remove existing fixture and use LSI included conduit stem with new LSI Junction Box and new Encore 12" Kit.	687461 676011R2
LSI CRO2 LSI CRO3 LSI CRS	5-hole pattern with 7" or 4" diameter (could be EC/ECTA retrofit of 9" or 12" hole)	Remove existing fixture and use LSI included conduit stem with existing CRO2/CRO3/CRS junction box.	
RECU Richmond Retrofit	Rectangular Richmond housing	Use new LSI RECU Accessory Kit.	673426R2
Total Replacement of: LSI Richmond Cree CAN-228 60LED Cree CAN-228 90LED	Rectangular hole 9.5" x 19.125" 7.375" x 16.125" 7.375" x 20.9375"	Remove existing fixture and use LSI included conduit stem with new LSI Rectangular Hole Kit and new LSI Junction Box.	678291R2WHT 687461
UNV (Universal 2x2) LSI Masters LSI Dakota Other similar 2x2 products	Surface mount 2x2 housing	Use new LSI UNV Accessory Kit.	673427R2
Remove Surface Mount Box	Conduit hole and possible discoloration of decking	Remove existing fixture and use LSI included conduit stem with new LSI Junction Box. [Possible need for beauty plates: 26" Beauty Plate (no holes) or 26" Beauty Plate with 4" center hole].	687461 357282 557193WHT
To install new Surface Mount Box	N/A	Surface Mount Box Kit	673433R2



**Encore 16" Accessory Kit**  
(673425)  
Includes: top panel with sealant

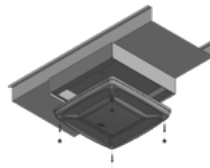
**Encore 12" Accessory Kit**  
(676011)  
Includes: top panel with sealant



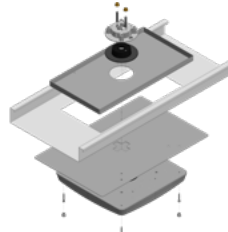
**RECU Accessory Kit**  
(673426)  
Includes cover panel, guide panel, tether clip and hardware



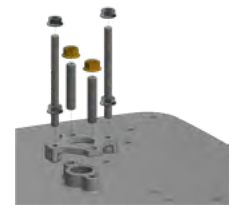
**UNV Accessory Kit**  
(673427)  
Includes mounting panel with auxiliary latch, 4 inner flange brackets and hardware to attach panel to fixture



**Surface Mount Box Kit**  
(673433)  
Includes 2" deep housing with tether kit, tether bolt and mounting bolts.



**Rectangular Hole Kit**  
(678291WHT)  
Includes cover panel, top plate, hardware and sealant



**CRU/CRUS Adaptor Kit**  
(687462)  
Includes adaptor and hardware. Use existing CRU/CRUS die cast driver box

