



OUTDOOR ARCHITECTURAL LUMINAIRES

OPULENCE™

*Series of Architectural
Luminaires*

OPULENCE

SERIES OF LUMINAIRES

Opulence combines a visually stunning fixture with five different mounting styles. The result is a lighting solution that bolsters the richness of every environment in which the luminaire is installed. Regardless of configuration, each product in the Opulence series features the same beautifully curved fixture with a clean housing and a near seamless mounting assembly.



POST TOP



PENDANT



SIDE ARM



SURFACE



WALL



EXCEPTIONAL STYLE

Ideal for parking facilities, low glare pedestrian walkways and landscaping projects. The Opulence series consists of matching surface, pendant, wall mount, area and post-top luminaires that are purposefully designed to accentuate every space where it is installed with architectural beauty and high-performance illumination.

VISUAL COMFORT

- Large Aperture Lens
- Dense Recessed LED Array
- Optional Diffuse Lens
- Low Lumen Outputs Available

POST TOP



FLOWING FORM

- Smooth transition regardless of mounting
- Clean housing design with no visible heat fins
- Styling complements surroundings
- Well hidden hardware

UNMATCHED PERFORMANCE

- True IES Distributions
- Very High Efficacy LEDs
- Programmable Drivers
- IP66 Rated Luminaire

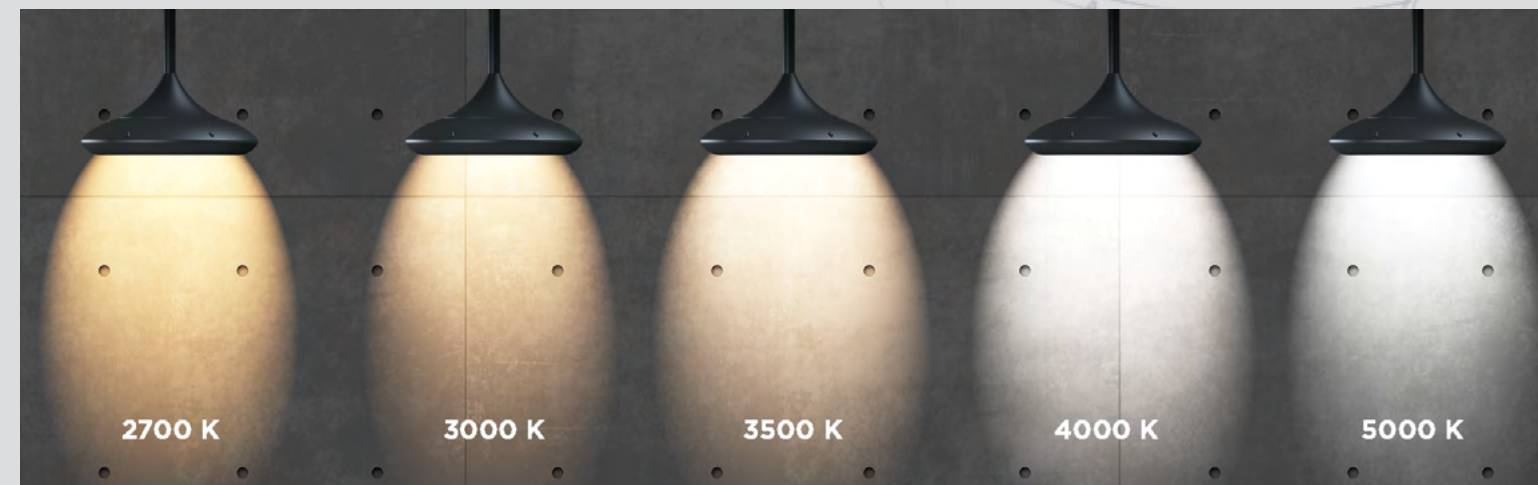
PENDANT WITH CONTROL SENSOR

EASE OF CONTROLS

- Integral to luminaires
- Standalone or Mesh Network
- Simple to use software and apps
- Pre-commissioned solutions available



5 STANDARD CCT's - 80 CRI



8 STANDARD PAINT FINISHES

Custom colors available.



MOUNTING OPTIONS



FLUSH MOUNT



TWIN POST TOP
& WALL BRACKETS



SPUN ALUMINUM
BASE COVER



CONTEMPORARY POLE
& BASE COVER

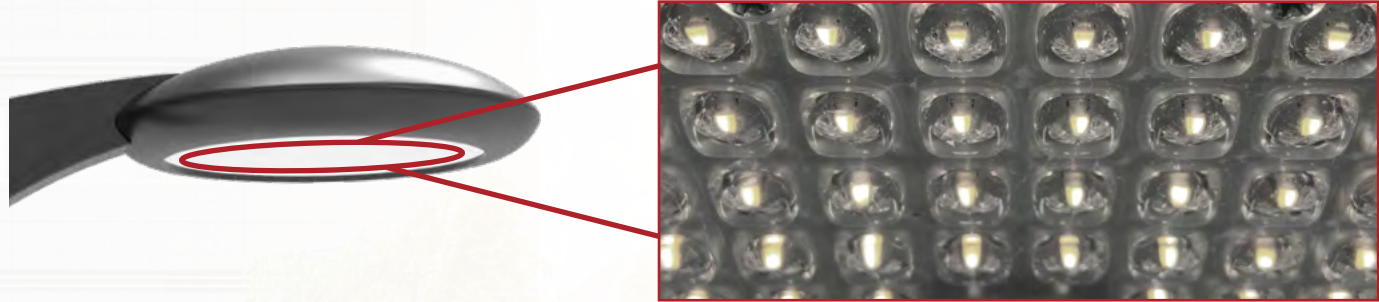
POST TOP

In addition to its stylish, contemporary appearance, the Opulence Post Top delivers exceptional light distribution for uniform illumination. Ideal for campus and park settings, this high-performing luminaire enhances the pedestrian experience with elegant style.



AREA LIGHT

With its dense LED arrangement and precision optics, the Opulence Area Light delivers high-performance illumination and extraordinary visual comfort. Like all Opulence configurations, this luminaire was designed to give you exceptional optical control for maximum uniformity.



MOUNTING OPTIONS

LSI's Opulence pole mounted luminaires are available with upswept side-arm and decorative pendant mounting configurations. Contemporary and sleek styling help the Opulence blend into any environment.

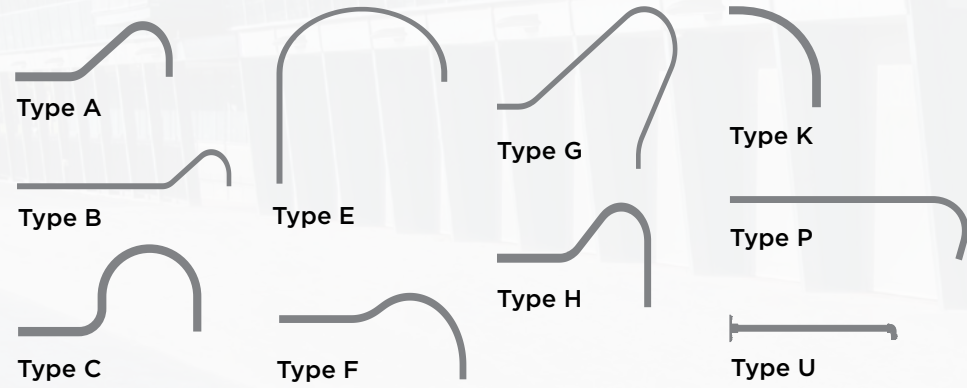


WALL LIGHT

Opulence Wall Mount luminaires feature several stylish mounts for any application. Whether mounting to a recessed junction box or directly to a vertical surface, Opulence has you covered.



GOOSENECK MOUNTING



Gooseneck wall mount bracket



EMERGENCY LIGHTS

LSI offers an optional battery backup system that provides 90 minutes of continuous power to ensure code compliance. For ease of maintenance, a test switch/indicator light is installed on the fixture's housing.



Test Switch/Indicator Light





CEILING LIGHT

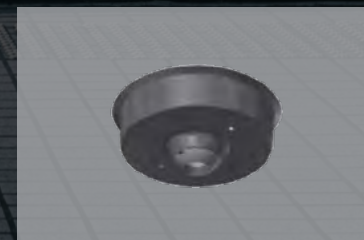
PENDANT & SURFACE DIRECT MOUNTING

Opulence Ceiling luminaires feature pendant and surface/direct mounting options. In addition, their low-profile housing makes them ideal for under canopy/soffit applications with lower ceiling heights. For higher ceilings, and when paired with a decorative aligner and shroud, this fixture's pendant creates a unique and stylish upscale aesthetic.

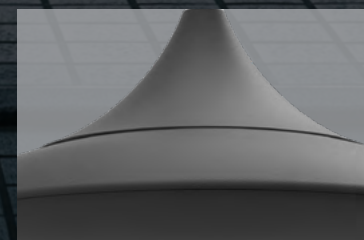


ACCESSORIES

Decorative, Round & Square Box Cover Aligners



Decorative Shroud



3/4" Pendants



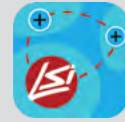
Surface Mount Bracket



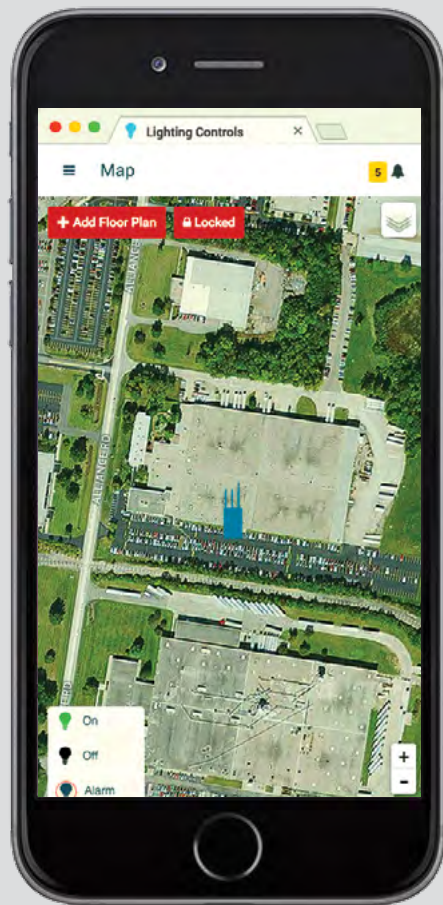
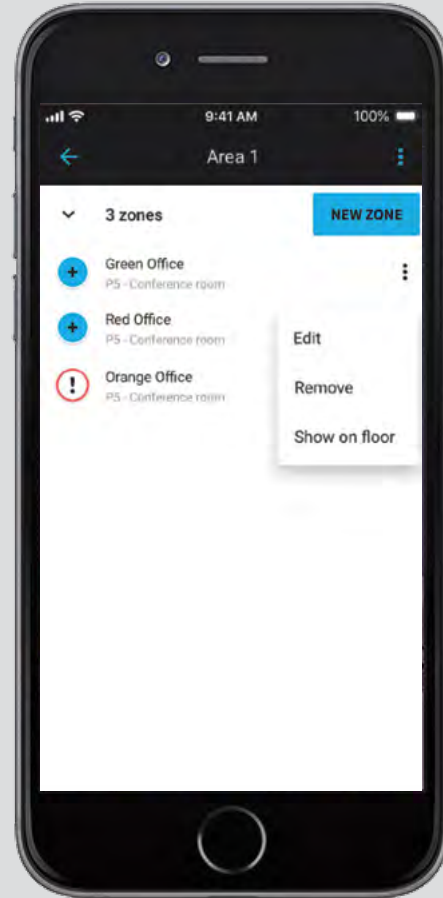
CONTROL YOUR LIGHTING

AirLink™ Blue

All of our Opulence luminaires are compatible with our AirLink Blue wireless lighting control system. This simple, highly-configurable product uses Bluetooth mesh technology to manage designated zones of illumination - helping to enhance safety, reduce energy costs and comply with applicable regulations. Opulence luminaires configured with AirLink Blue are available pre-commissioned from the factory - making them easy to specify and install at the job site. Importantly, the AirLink Blue system can also be programmed and managed using an intuitive app for mobile devices or an office computer with an internet connection. Learn more about this simple to use software on our website.



AirLink Blue
iOS Only App



AirLink Site Manager
Lighting Control Web App

AirLink™ Outdoor enabled by Synapse®

The AirLink Outdoor product line is the perfect solution for commercial, industrial and municipal applications, such as: auto dealerships, parking lots, garages, shopping complexes and warehouses where robust wireless communication is required.

AirLink Outdoor utilizes a 2.4 GHz Self-Healing Mesh Network. The flexibility and scalability of the system make it perfect for both new construction and retrofit projects. The user-friendly AirLink Outdoor web application is accessible through any device with an internet connection and allows for complete customization of the system and its features. Learn more about this simple to use software on our website.



OPULENCE™ *Series of Architectural Luminaires*

Visit us online: www.lsicorp.com
Call us: (800) 436-7800

Learn more at lsicorp.com



LSI Industries Inc. 10000 Alliance Rd. Cincinnati, OH 45242 • www.lsicorp.com
(800) 436-7800 • ©2021 LSI Industries Inc. All Rights Reserved.

08/13/2021
PRBR.1100.B.0821