

Catalog # :

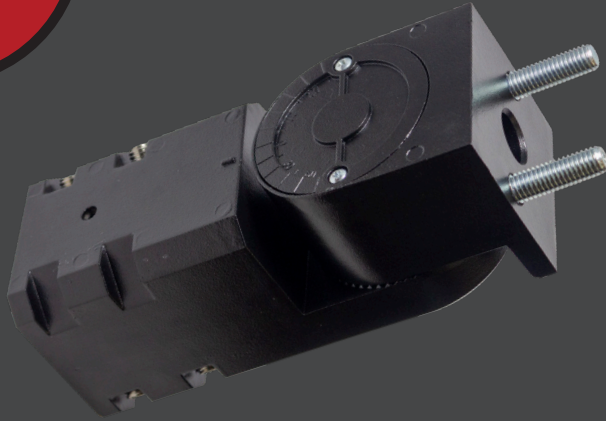
Project :

Prepared By :

Date :



BKA ASF CLR Area Light Brackets



The adjustable Slip Fitter is a 3G rated rugged die cast aluminum adapter to mount LSI luminaires onto a 2 3/8" O.D. tenon. The Adjustable Slip Fitter can be rotated 180° allowing for tilting LSI luminaires up to 45 degrees and 90° when using a vertical tenon

Features & Specifications

- Designed to mount LSI luminaires onto a 2" (51mm) IP, 2.375" (60mm) O.D. tenon.
- Can be rotated 180° allowing for tilting LSI luminaires up to 45 degrees for higher vertical illumination and 90° when using a vertical tenon
- Separate wireways for both line voltage and dimming wires
- Rugged 3pc Die Cast Aluminum construction, silicone pole gasket, fixture mounting studs, stainless steel visible hardware, and self-drilling screw for extra security
- EPA: .2
- Weight: 5lbs
- 3G rated for ANSI C136.31 high vibration applications in both Vertical and Horizontal mountings
- Bracket finished with LSI's DuraGrip® polyester powder coat finishing process. The DuraGrip finish withstands extreme weather changes without cracking or peeling. Other standard LSI finishes available. Consult factory.

Compatible Fixtures



SLM



MRL/ZNL



MRM/ZNM

Ordering Guide

TYPICAL ORDER EXAMPLE:

BKA ASF CLR

Prefix	Finish
BKA ASF	BRZ - Bronze BLK - Black GPT - Graphite MSV - Metallic Silver WHT - White PLP - Platinum Plus SVG - Satin Verde Green

Product Dimensions

