



Job Name:
 Date:
 Model:
 Quantity:

ACCESSORY

Mounting Stakes

Features

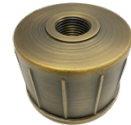
- ❖ Heavy Duty with Stabilizer Fins
 - Stabilizer fins to hold position in sandy soil
 - No screwdriver necessary for assembly
 - Fitted cap with set screw (Optional Brass)
 - Corrosion resistant
 - Suitable for 12V/120V commercial applications
- ❖ Brass Stake
 - Designed for low voltage landscape lighting
 - Metal for rocky/hard soils
- ❖ ABS Plastic Stake
 - General purpose for low voltage landscape lighting
 - Corrosion resistant for coastal areas

Specification

- ❖ Heavy Duty ABS Stabilizer Stake – 2 ½” x 19”
 - Two 8.5” stabilizer fins
 - 1/2” NPT threaded cap
 - Optional Brass Cap available
 - Replacement ABS Cap available – 6 pc.
- ❖ Brass Stake - 9” x 2”
- ❖ ABS Stake - 8” x 2”
- ❖ Oversized ABS Large Stake - 8 ½” x 3”



X1HDSSTK



Optional Brass Cap

X1HDSSTK-BCAP



Replacement ABS Cap – 6 pc.

X1HDSSTK-ACAP



BX1STK8



X1STK8



X1STKL8

PART NUMBER	UPC	LENGTH	MATERIAL
X1HDSSTK	852140007353	19”	ABS
X1HDSSTK-BCAP	852140007384	3”	BRASS
X1HDSSTK-ACAP	850016499547	3”	ABS
BX1STK8	852140007384	9”	BRASS
X1STKL8	852140007919	8 ½”	ABS
X1STK8	852140007391	8”	ABS

650 Algonquin Rd, Ste 206, Schaumburg, IL 60176
 PH: 847.496.5276 FAX: 846.701.8342



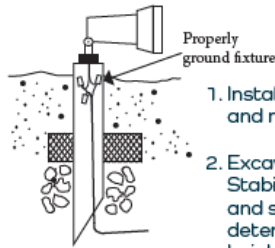
X1HDSSTK

Hi-Impact ABS 2" STABILIZING POST



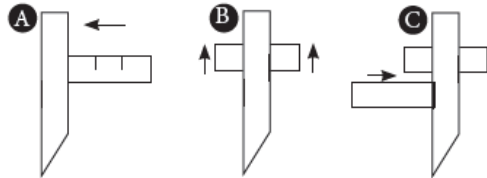
- Fins increase in-ground stability
- Suitable for 120V line voltage or low voltage
- 2" x 19" post with 2 - 8 1/2" stabilizer fins
- 1/2" NPT threaded cap works with most standard fixtures
- 360° stabilizing
- Optional brass cap available

Installation Instructions



1. Installation should comply with local and national electrical codes.
2. Excavate for conduit lines and Stabilizing Post. Consider climate and snowfall conditions when determining the Stable Light Post's height above the ground.

3. Insert stabilizer wings in the Stabilizing Post.



4. Position in hole and, if desired, add gravel or rock for stability.
5. Make necessary connections to supply wires and properly ground the fixture. Tighten cap onto fixture with retaining screw.



© 2019 Lite the Nite
All rights reserved
Made in China

www.litethenite.com