



Alcyon LED Vertical Cylinders are ideal for display, accent and task lighting and offer higher efficiency than incandescent or halogen sources leading to energy savings with no ultraviolet or infrared radiation. Alcyon provides concentrated light which dramatically draws interest to objects and elements in a space.

Project: \_\_\_\_\_  
 Location: \_\_\_\_\_  
 Cat.No: \_\_\_\_\_  
 Type: \_\_\_\_\_  
 Lamps: \_\_\_\_\_ Qty: \_\_\_\_\_  
 Notes: \_\_\_\_\_

### Fixture

example: LLAV30930ALCW

Series	Lumens	CRI/CCT*	Adapter	Finish	Options
<b>LLAV</b>	<b>30</b>	<input type="checkbox"/>	<input type="checkbox"/>	<input type="checkbox"/>	<input type="checkbox"/>
<b>LLAV</b> Alcyon LED vertical cylinder	<b>30</b> 34W 3000lm	<b>27</b> 80CRI/2700K <b>30</b> 80CRI/3000K <b>40</b> 80CRI/4000K <b>927</b> 90CRI/2700K <b>930</b> 90CRI/3000K <sup>1</sup>	— Lightolier <b>H</b> Halo <b>J</b> Juno <b>P</b> Prospec <sup>2</sup> See above	<b>WH</b> White <b>AL</b> Alum. <b>BK</b> Black See above	— no options <b>CW</b> CrispWhite <sup>1</sup>

### Reflector

example: LLAV12RF

Series	Lumens	Reflector
<b>LLAV</b>	<b>12</b>	<input type="checkbox"/>
<b>LLAV</b> Alcyon LED vertical cylinder	<b>12</b> Compatible with 34W / 3000 lm	<b>RNS</b> 11° Narrow Spot <b>RS</b> 17° Spot <b>RNF</b> 24° Narrow flood <b>RF</b> 36° Flood

### Features

- LED board:** COB LED.
- Integrated housing heat sink:** die-cast aluminum maintains LED junction temperature for minimum 50,000 hr lifetime at 70% lumen maintenance.
- Track attachment fitting:** Integral color in gray, black or white. Molded polycarbonate. Rotates into track and locks into place with the use of push tabs. Located at center of mass to allow for fixture to hang vertically straight on track and with extensions wands and other track accessories.
- Push tab:** Molded polycarbonate. Locks and detaches unit.
- Track adapter housing:** Die-cast aluminum.
- Movable brass contact:** Brass extends for connection to 2nd circuit (Advent track only).
- Pivot mounts:** Allows for 350° horizontal. Vertical rotation of +/- 90° from vertical aim to the floor.
- Driver housing:** Extruded aluminum housing with die-cast aluminum covers.
- Interchangeable optics:** High efficiency metalized coating providing up to 98% total reflectivity for optimal light quality, beam control and punch. Reflector has lens attached which protects reflector finish and LEDs from contamination. Tool-less installation. Reflector sold separately to allow field replaceability.
- Finishes:** Painted with a baked enamel. Contains some powder coated finishes.

### Dimming

**Trailing edge (ELV) dimming compatible**  
**SR400RPC120** Philips Controls Sunrise (3.97%)  
**SELV-300P** Lutron Skylark (4.03%)  
**IPE04** Leviton Decora (4.01%)

### Mounting

Compatible with all Monopoint, Multipoint, recessed track, suspension track, suspension stems,

### Accessories

example: LLAV12AHWH

Series	Finish
<input type="checkbox"/>	<input type="checkbox"/>
<b>LLAV12AH</b> Accessory holder with spring	<b>WH</b> White <b>AL</b> Aluminum <b>BK</b> Black
<b>23SNT6</b> Compatible snoot	<b>WH</b> White <b>AL</b> Aluminum <b>BK</b> Black
<b>LLAV12</b> Compatible diffusion filters	<b>SF</b> Soft Focus <b>FR</b> Frosted Etched <b>LS</b> Linear Spread <b>SY</b> Soft Focus

Compatible color filters/gels provided by others

**AL4HC** Compatible hex cell louver (matte black)

- CrispWhite (CW) is only available with 90CRI / 3000K CCT (930).
- Prospec is only offered in White (WH) and Black (BK).

sloped ceiling adapters as well as Basic, Advent and Radius track systems. Ceiling and horizontal or vertical wall mounted (adapters available for Prospec, Halo, Juno and ConTech).

### Electrical

**Electronic power supply**  
 Input voltage: 120V, 60Hz  
 Input power: 34W  
 Efficacy: 93lm/W (nominal) @ 3000K  
 High power factor: >0.9  
 CRI: 80-90 (typical)

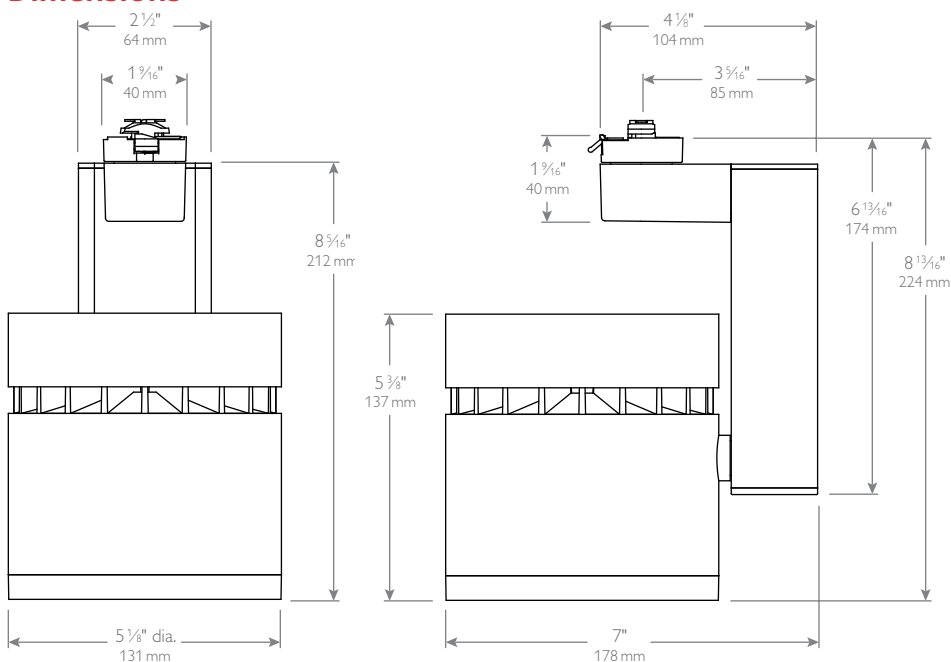
### Labels

cULus Listed.  
 5 year warranty.  
 ENERGY STAR® (pending).

# LLAV30 Alcyon LED Vertical

Cylinder, 34W/3000lm

## Dimensions



	Beam spread (To 50% CBCP)	CBCP	Rated Life (Hrs.)
LLAV12RNS Narrow Spot	11°	47,724	50,000
LLAV12RS Spot	17°	23,751	50,000
LLAV12RNF Narrow Flood	24°	20,304	50,000
LLAV12RF Flood	36°	7,653	50,000

## Accessories







Alcyon LED track lighting offers a full range of high performance accessories for tinting, coloring and shaping of the light beam. All accessories are designed to attach easily. A complete accessory consists of a size and series suffix.

### Components

1. Housing
2. Reflector
3. Accessory holder
4. Accessory spring
5. Diffusion filters
6. Hex cell louver
7. Snoot
8. Aperture ring

## Diffusion/special filters

LLAV12 = 4-3/4" dia.

-  **LS** Linear spread lens
-  **FR** Frosted etched lens
-  **SF** Solite soft focus lens
-  **SY** Soft Focus lens

## Hex cell louvers

AL4HC = 4-3/4" dia.



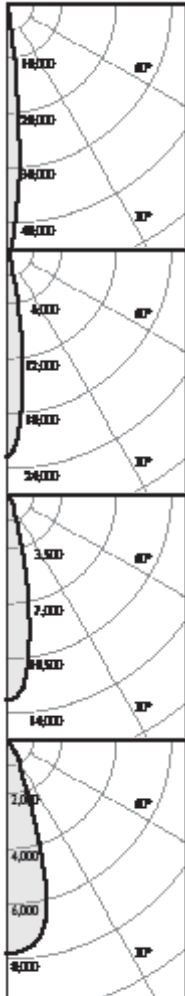
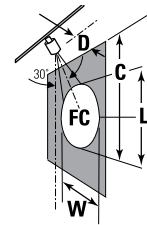
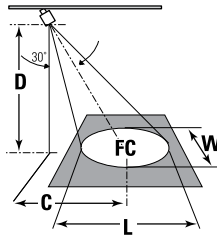
# LLAV30 Alcyon LED Vertical

Cylinder, 34W/3000lm

## Aiming angles

L and W are the outer points where the candle power drops to 50% of the maximum. FC are the initial footcandles at the center of the beam. Data shown is for 3000K, for 2700K multiply FC by 0.91.

L Beam length  
D Distance  
W Beam Width  
A Aiming Angle  
FC Footcandles  
C Distance to center beam  
CBCP Center Beam Candle Power.



**Track: LLAV3030WH**  
**Reflector: LLAV12RNS**

CCT <sup>1</sup> :	3000K
Output lumens:	3214 lms
Input watts <sup>2</sup> :	34.4 W
Efficacy:	93.4 lm/w
CRI:	80 min
CBCP:	45,955 cd
Beam Angle:	11°
Report no <sup>3</sup> :	1235GFR

**Track: LLAV3030WH**  
**Reflector: LLAV12RS**

CCT <sup>1</sup> :	3000K
Output lumens:	3170 lms
Input watts <sup>2</sup> :	34.4 W
Efficacy:	92.2 lm/w
CRI:	80 min
CBCP:	22,739 cd
Beam Angle:	17°
Report no <sup>3</sup> :	1236GFR

**Track: LLAV3030WH**  
**Reflector: LLAV12RNF**

CCT <sup>1</sup> :	3000K
Output lumens:	3160 lms
Input watts <sup>2</sup> :	34.3 W
Efficacy:	92.1 lm/w
CRI:	80 min
CBCP:	13,032 cd
Beam Angle:	24°
Report no <sup>3</sup> :	1234GFR

**Track: LLAV3030WH**  
**Reflector: LLAV12RF**

CCT <sup>1</sup> :	3000K
Output lumens:	3172 lms
Input watts <sup>2</sup> :	34.3 W
Efficacy:	92.5 lm/w
CRI:	80 min
CBCP:	7,818 cd
Beam Angle:	36°
Report no <sup>3</sup> :	1233GFR

### Narrow Spot

#### 30° Horizontal Aiming

Distance		Beam		
D	C	F.C.	L	W
6	3.5	829	1.5	1.3
8	4.6	466	2.1	1.8
10	5.8	298	2.6	2.2
12	6.9	207	3.1	2.7

### Spot

#### 30° Horizontal Aiming

Distance		Beam		
D	C	F.C.	L	W
6	3.5	410	2.4	2.1
8	4.6	231	3.2	2.8
10	5.8	148	4.0	3.5
12	6.9	103	4.8	4.1

### Narrow Flood

#### 30° Horizontal Aiming

Distance		Beam		
D	C	F.C.	L	W
6	3.5	235	3.5	2.9
8	4.6	132	4.6	3.9
10	5.8	85	5.8	4.9
12	6.9	59	6.9	5.9

### Flood

#### 30° Horizontal Aiming

Distance		Beam		
D	C	F.C.	L	W
6	3.5	141	5.4	4.5
8	4.6	79	7.2	6.0
10	5.8	51	9.0	7.5
12	6.9	35	10.8	9.0

#### 30° Vertical Aiming

Distance		Beam		
D	C	F.C.	L	W
2	3.5	1436	1.6	0.8
3	5.2	638	2.4	1.2
4	6.9	359	3.2	1.5
5	8.7	230	4.0	1.9

#### 30° Vertical Aiming

Distance		Beam		
D	C	F.C.	L	W
2	3.5	711	2.6	1.2
3	5.2	316	3.8	1.8
4	6.9	178	5.1	2.4
5	8.7	114	6.4	3.0

#### 30° Vertical Aiming

Distance		Beam		
D	C	F.C.	L	W
2	3.5	407	3.9	1.7
3	5.2	181	5.9	2.6
4	6.9	102	7.9	3.4
5	8.7	65	9.8	4.3

#### 30° Vertical Aiming

Distance		Beam		
D	C	F.C.	L	W
2	3.5	244	7.6	2.6
3	5.2	109	11.4	3.9
4	6.9	61	15.2	5.2
5	8.7	39	19.0	6.5

1. Correlated Color Temperature within specs as defined in ANSI\_NEMA\_ANSI C78.377-2008: Specifications for the Chromaticity of Solid State Lighting Products.
2. Wattage controlled to within +/- 5%.
3. Tested using absolute photometry as specified in LM79: IESNA Approved Method for the Electrical and Photometric Measurements of Solid-State Lighting Products.

