

PROJECT	DATE
TYPE	CATALOG #

6W E.T. POWER FLOOD LED-FL-113B-6W

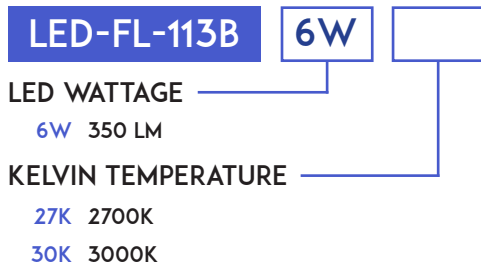
KEY FEATURES

- INTEGRATED LED WITH HIGH LUMEN OUTPUT
- QUICK CHANGE LED TECHNOLOGY ALLOWS FOR EASY REPLACEMENT OF LED BOARD IN THE FIELD
- DIMMABLE*
- HEAVY CAST BRASS
- NATURAL BRONZE FINISH GUARANTEED NOT TO CHIP, FLAKE OR PEEL
- TEMPERED, SHOCK AND HEAT RESISTANT STEP GLASS

PRODUCT SPECIFICATIONS

DIMENSIONS	3"H X 4-1/2"W X 3"D
MATERIAL	CAST BRASS
LENS	CLEAR DOUBLE STEP GLASS
LED	6W SMD
LUMENS	350
VOLTAGE	11-13V AC/DC
PROJECTION	UP TO 30 FT
LEAD WIRE	3 FT

FIXTURE CONFIGURATION



NOTES

*PRIMARY SIDE DIMMING: Requires LED magnetic low voltage (MLV) or LED electronic low voltage (ELV) dimmable transformer and compatible LED dimmer (MLV or ELV) For more information see installation guidelines
+ Fully tested with Lutron Diva (DVLV-600P) dimmer and Lightcraft dimmable transformers

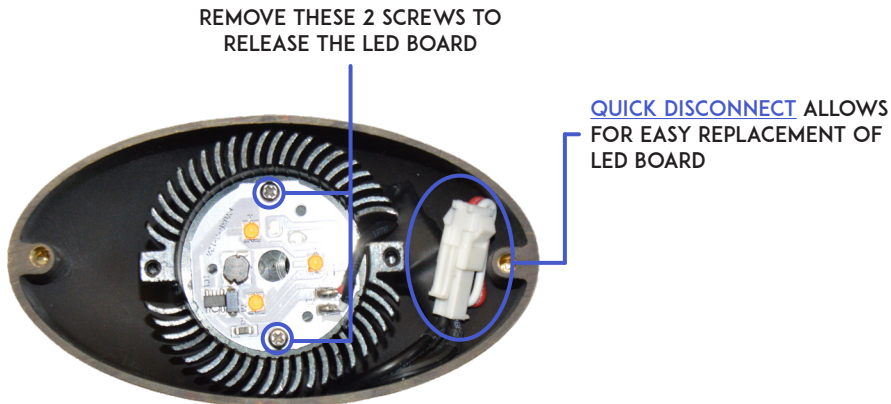


PROJECT	DATE
TYPE	CATALOG #

FEATURES



QUICK CHANGE TECHNOLOGY



See [LED-FL-113B INSTALLATION SHEET](#) for full detailed installation instructions.