



Portfolio

Performance LED

4-inch & 6-inch

- General Illumination
- Precision High Center Beam Optics

Portfolio

architectural recessed downlighting

The specifier's choice for architectural downlighting

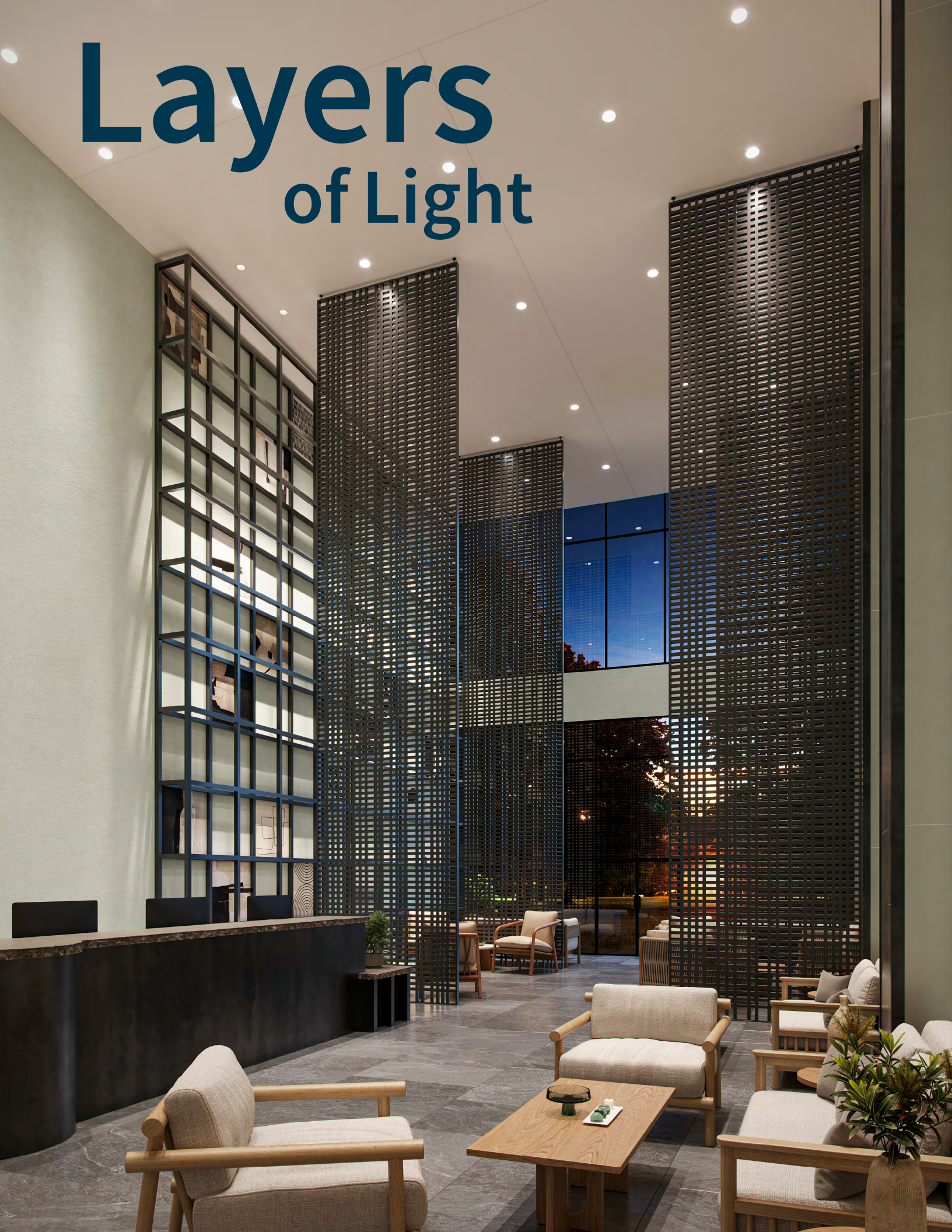
Enabling complete application design with a comprehensive line of products that provide the highest quality of light to maximize comfort in architectural spaces.



Superlative optical control provides exceptional illumination with excellent glare control and low aperture brightness. The recessed downlights are available in multiple lumen packages, color temperatures and a variety of finishes. Standard 0-10V driver dims to 1% and a multitude of optional drivers are available. Creating the perfect atmosphere is easy with these low glare downlights that offer a variety of color control and connected options.



Layers of Light





LD General

Portfolio LD General Distribution delivers a consistent, broad-angle overall lighting across both vertical and horizontal surfaces, resulting in a seamless illumination that is free from any uneven bright spots or rings.



LD Accent

Portfolio LD Precision Distribution offers a focused and intense illumination with narrow beam angles that produce striking contrasts, sharp highlights, and deep shadows. This creates a dramatic layer of light that is both captivating and mesmerizing.

Ambient Lighting



Images generated under license using Adobe Firefly.

Lighting throughout an area which produces general illumination. The appropriate Portfolio downlights are available to provide patterns of light distribution for this purpose. These units direct light in specific patterns to illuminate areas without drawing attention to the fixtures themselves.

Task Lighting



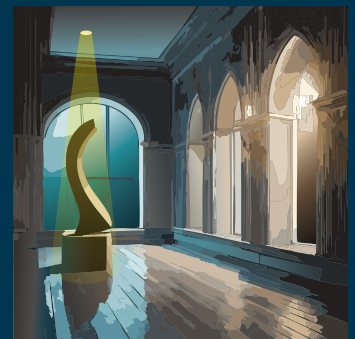
Lighting directed to a specific area to perform a specific task. Use Portfolio downlights with narrow beam patterns and high illumination levels. The combination of task and ambient lighting should provide a level of ambient lighting that is lower than the task yet is designed so the ambient complements the task lighting. Here luminance ratio should be considered. Luminance ratio is the measure of task or accent to surrounding ambient lighting.

Wall Washing



Lighting of vertical surfaces defines form, space and texture. It can visually increase the apparent size of a room while improving visual comfort. Portfolio has skillfully engineered fixtures designed to direct a spread of illumination on these surfaces. Portfolio downlights may be selected based on the size of the space, the level of illumination and intensity desired, energy efficiency and controllability.

Accent Lighting



Directional lighting used to focus attention on a particular object or surface. Its intensity levels vary according to ambient illumination levels. Higher ambient levels require higher accent illumination to provide the necessary contrast (luminance ratio). This requires adjustable fixtures which can deliver higher illumination levels and precise beam distributions. Portfolio adjustable downlights are often used in accent lighting and offer the range of intensities and beam spreads necessary for controlled quality lighting.

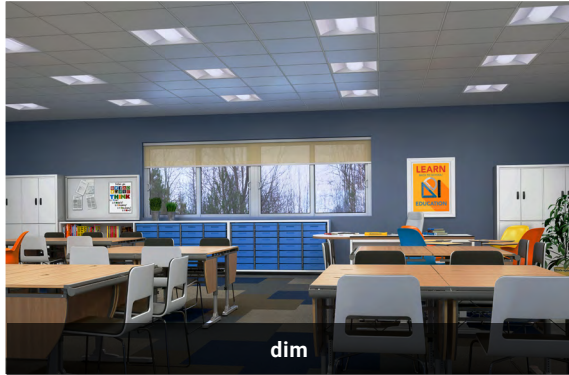
Color Control



Tunable White

Fine Tuning of Light

Whether you're looking to optimize productivity or simply add dramatic flair, VividTune's tunable white technology allows you to adjust the color temperature from warm white to cool white, creating an environment that fosters productivity and concentration.

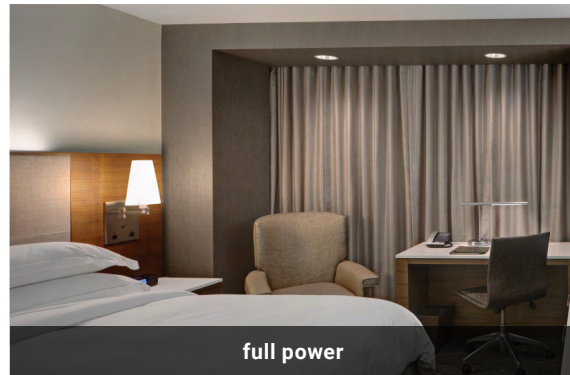
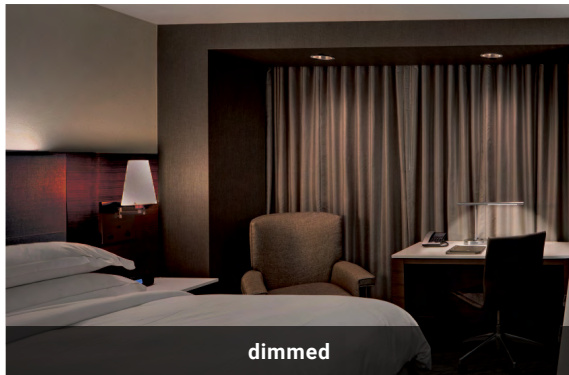


light intensity



D2W™ Dim-to-Warm Solution

Bring the warm, dim glow reminiscent of traditional incandescent and halogen sources into your space, for a fraction of the energy consumption, with our dim-to-warm solution.



dim-to-warm

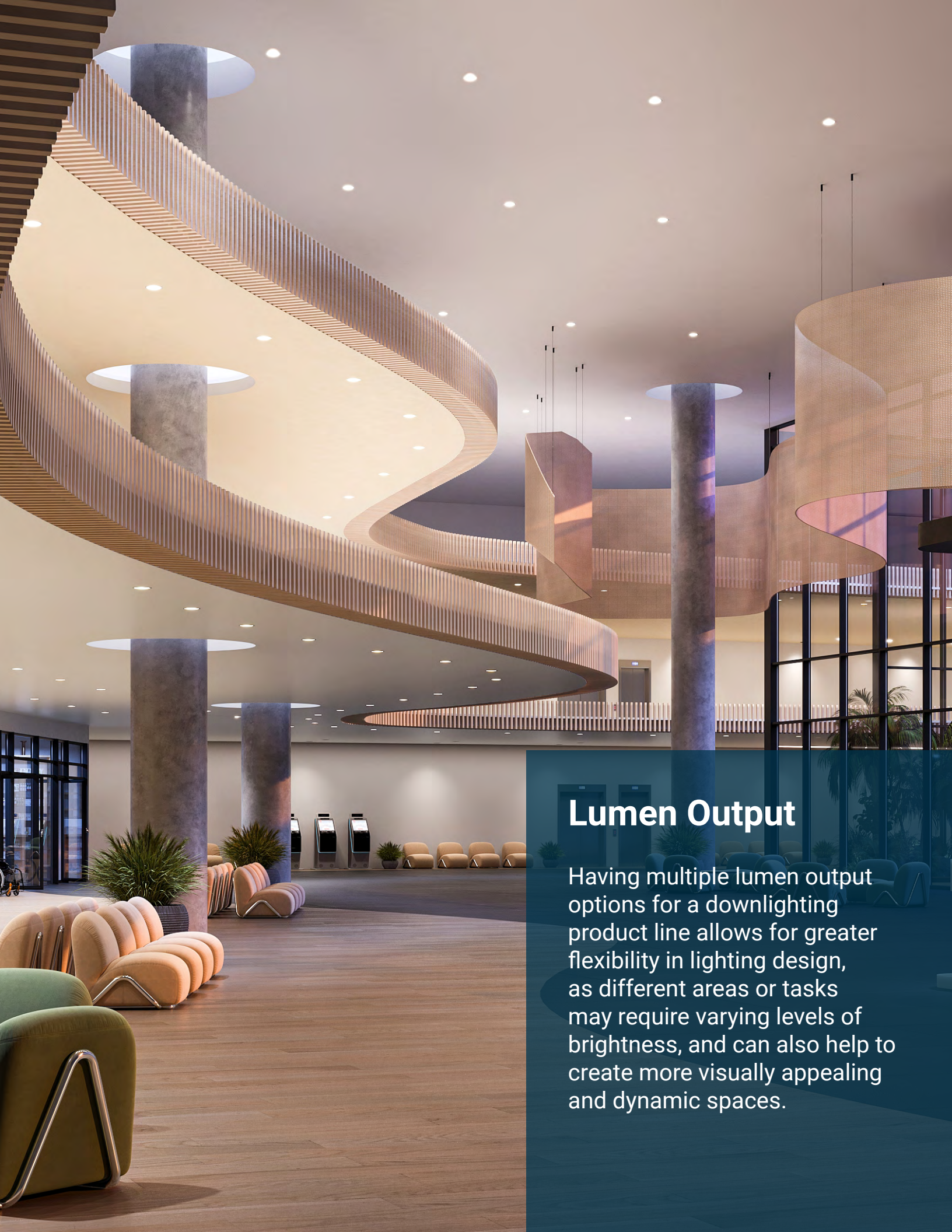
BioUp

The Importance of Light on Performance

Light has a visual impact (see better), an emotional impact (feel better), and a biological impact (function better).



Spectrally Enhanced Tunable and Static White



Lumen Output

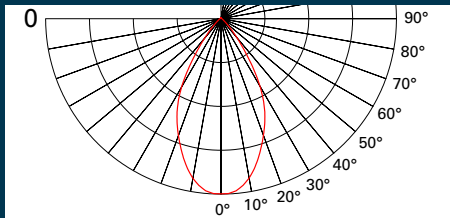
Having multiple lumen output options for a downlighting product line allows for greater flexibility in lighting design, as different areas or tasks may require varying levels of brightness, and can also help to create more visually appealing and dynamic spaces.



General Light

LD GENERAL

Portfolio LD General Distribution delivers a consistent, broad-angle overall lighting across both vertical and horizontal surfaces, resulting in a seamless illumination that is free from any uneven bright spots or rings.



LD4C / LD6C

Standard height
new construction



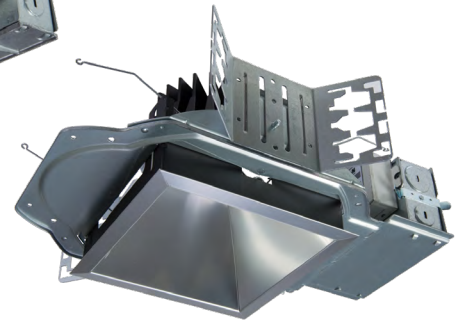
LDSQ4C / LDSQ6C

Standard height
new construction



LDS4C / LDS6C

Shallow height
new construction



LDSSQ4C / LDSSQ6C

Shallow height
new construction



LDRT4C / LDRT6C

Install from below/retrofit

4-inch & 6-inch General Illumination Downlight & Wall Wash



Thermally Optimized

The integrated LED design provides quality thermal conductivity of the LED to the die cast thermal assembly ensuring optimal thermal management and maximum efficacy.

Superior LED

Portfolio's advanced LED system contains proximity phosphors over chip-on-board LEDs, providing a uniform source with high efficiency and no pixelation. It is available in 90 CRI minimum, with R9 greater than 50 and color accuracy within 2 SDCM, providing both color accuracy and uniformity.



Reflector System

Reflectors are designed to provide aesthetically pleasing performance and comfort with a highly reflective upper reflector combined with transmissive transitional lenses that diffuse source brightness and evenly distribute light. They are available in all of Portfolio's standard finishes.



Scan or Click to
Learn More.

Product Certifications & Features



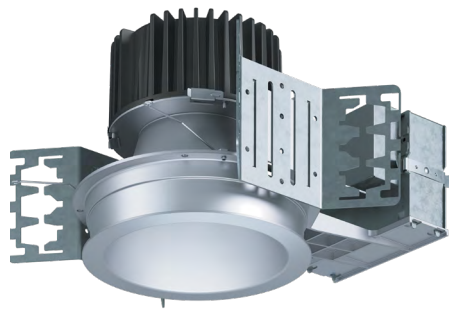
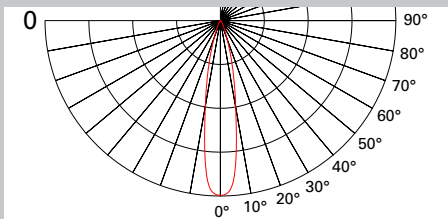
- Available lumens
 - 4" = 250 – 7500 lumens
 - 6" = 250 – 15,000 lumens
- 90, 97 & 98 CRI
- 2400, 2700, 3000, 3500, 4000, & 5000 CCT
- Dim to warm and tunable white
- 8 driver options
- Multitude of reflector options
- Available remote and plug in driver for ease of maintenance
- Integral or remote battery back up
- Emergency transfer device



Accent Light

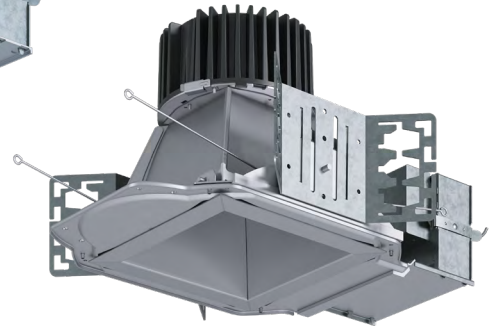
LD PRECISION

Portfolio LD Precision Distribution offers a focused and intense illumination with narrow beam angles that produce striking contrasts, sharp highlights, and deep shadows. This creates a dramatic layer of light that is both captivating and mesmerizing.



LD4D / LD6D

Standard height
new construction



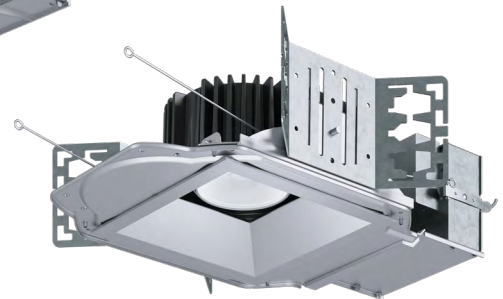
LDSQ4D / LDSQ6D

Standard height
new construction



LDS4D / LDS6D

Shallow height
new construction



LDSSQ4D / LDSSQ6D

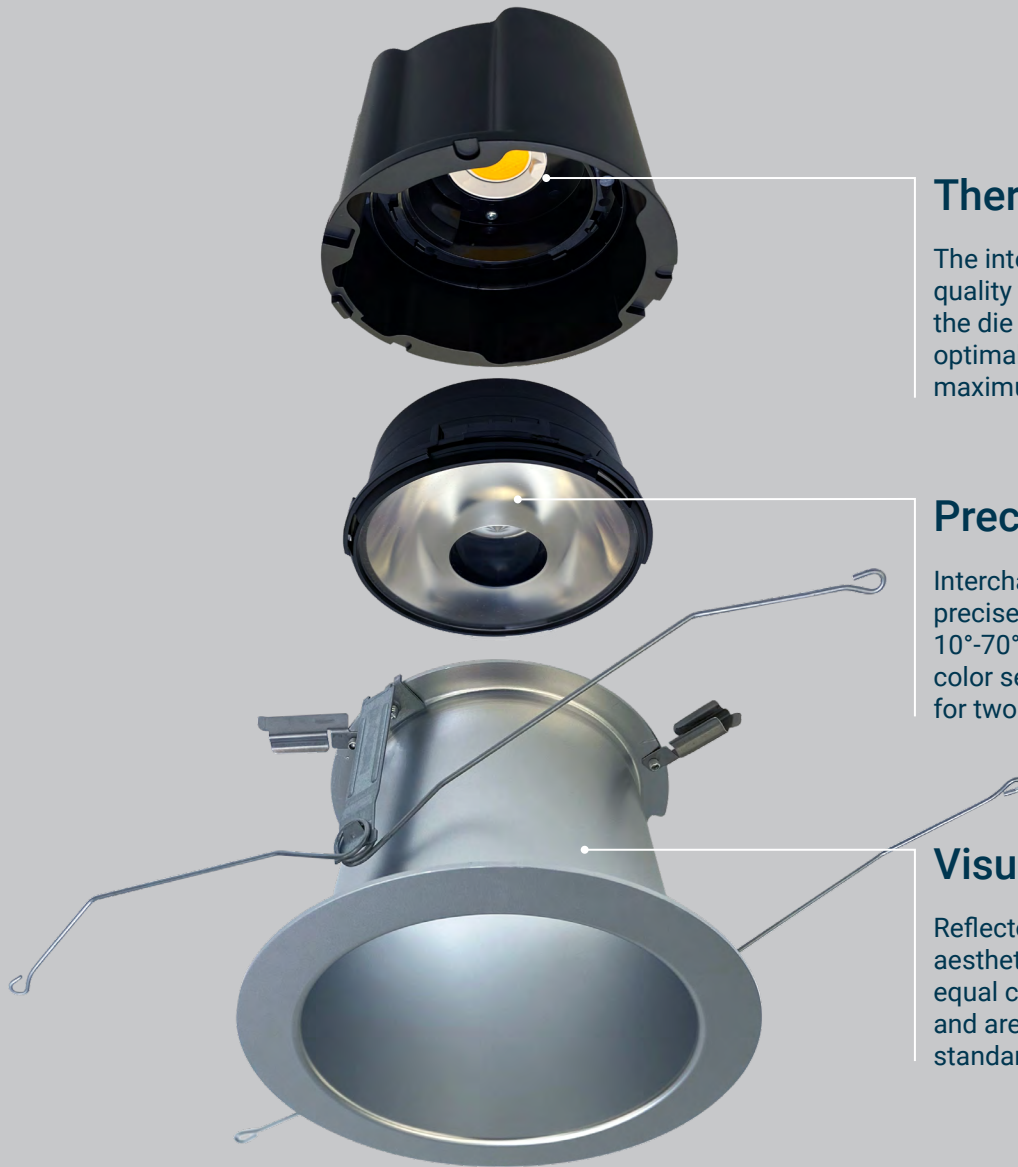
Shallow height
new construction



LDRT4D / LDRT6D

Install from below/retrofit

4-inch & 6-inch High Center Beam Candlepower Downlight



Thermally Optimized

The integrated LED design provides quality thermal conductivity of the LED to the die cast thermal assembly ensuring optimal thermal management and maximum efficacy.

Precision Optics

Interchangeable silicone optics provide precise beam control in 5° increments from 10°-70°, providing a smooth beam without color separation. Offered with Media holder for two lens media.

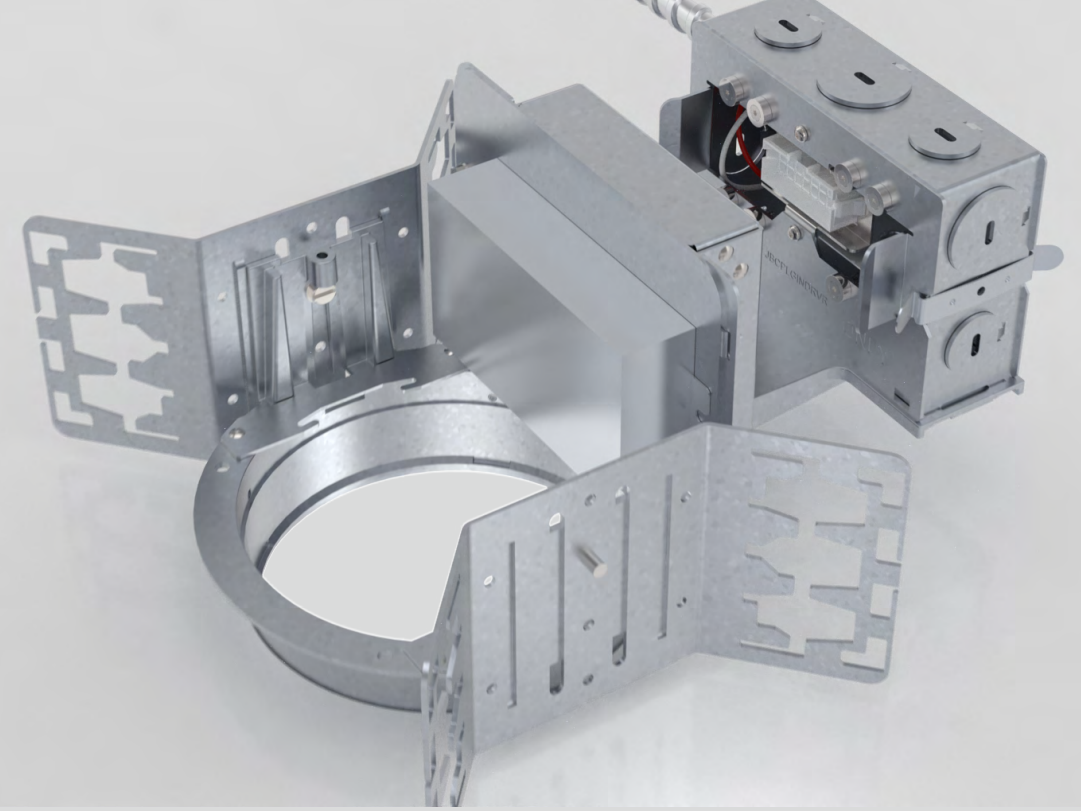
Visual Comfort

Reflectors are designed to provide aesthetically pleasing performance with equal cut-off to source and source image, and are available in all of Portfolio's standard finishes.

Product Certifications & Features



- Available lumens
 - 4" = 250 – 9500 lumens
 - 6" = 250 – 9500 lumens
- 90, 97 & 98 CRI
- 2400, 2700, 3000, 3500, 4000, & 5000 CCT
- Dim to warm and tunable white
- 8 driver options
- Shallow and deep reflector options
- Available remote and plug in driver for ease of maintenance
- Integral or remote battery back up
- Emergency transfer device



Plug-in Driver

Plug in driver with magnetic snap in attachment method eases replacement in hard ceilings.



Scan or Click to
Learn More.



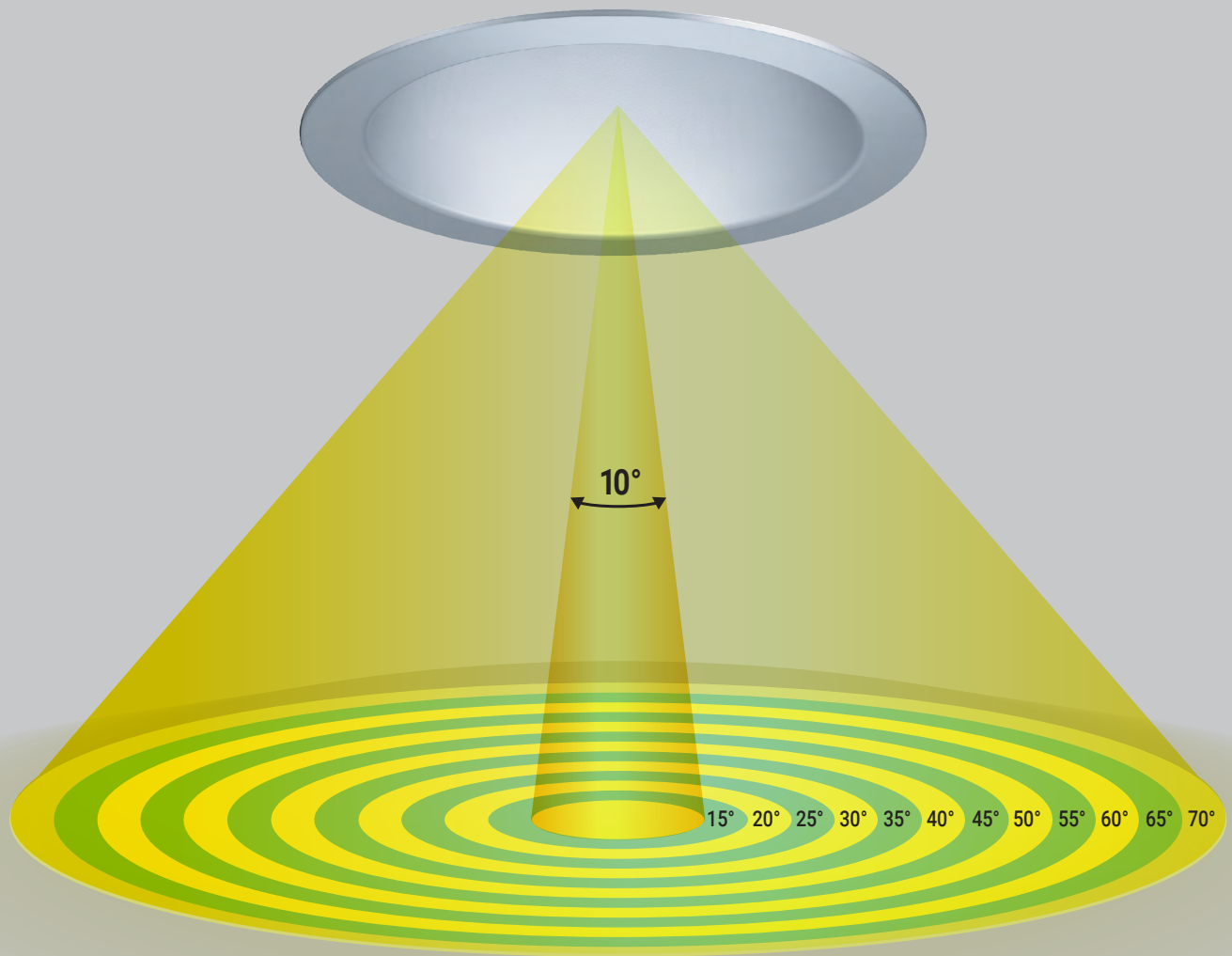
Rotatable Lens Wall Wash

Rotatable lens allows for precise illumination on vertical surfaces.



Scan or Click to
Learn More.





Optics

Beam options in 5° increments from 10° - 70°

Precision Optical Elements

- Primary optics are field interchangeable and lock into place with a twist
- Excellent optical efficiency with no stray lumens
- Integral lens holder accepts up to (2) 2" diameter 3.0mm thick color filters or lens

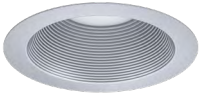


color filters

lenses



Trims



BA

Spun Aluminum Baffle



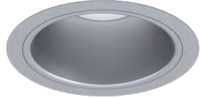
HY

Hyperbolic Medium Beam



M

50° Cutoff,
Medium Beam Reflector



MD

45° Cutoff,
Medium Beam Reflector



N

Narrow



W

Wide



CS

Cast Shallow



S

Shallow



DP

45° Cutoff Downlight



SWN

Single Wall Wash



DWN

Double Wall Wash



CW

Corner Wall Wash



LDWW

Lensed Double Wall Wash



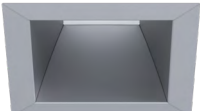
LSWW

Lensed Single Wall Wash



SQ

Square



SQW

Square Wide



CSSQ

Cast Shallow Square



SQLWW

Square Lensed Wall Wash

Reflector finishes



LI

Specular



H

Semi Specular Clear



WMH

Warm Haze



WH

Wheat



GPH

Graphite Haze



B

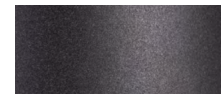
Specular Black

Painted finishes



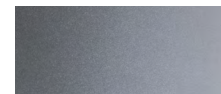
MW

Matte White



MB

Matte Black



MMS

Matte Metallic Silver

Reflector options

Round - General Illumination

- Narrow spun aluminum
- Medium spun aluminum with 45° or 50° cutoff
- Wide spun aluminum
- Medium beam hyperbolic
- Non-conductive shallow
- Die cast shallow
- Single, double, and corner open wall wash
- Single and double lensed wall wash

Round - Precision Optics

- Deep cone with 45° cutoff
- Spun aluminum shallow
- Die cast shallow

Square - General Illumination

- Medium anodized aluminum with 45° or 50° cutoff
- Die cast shallow
- Lensed wall wash

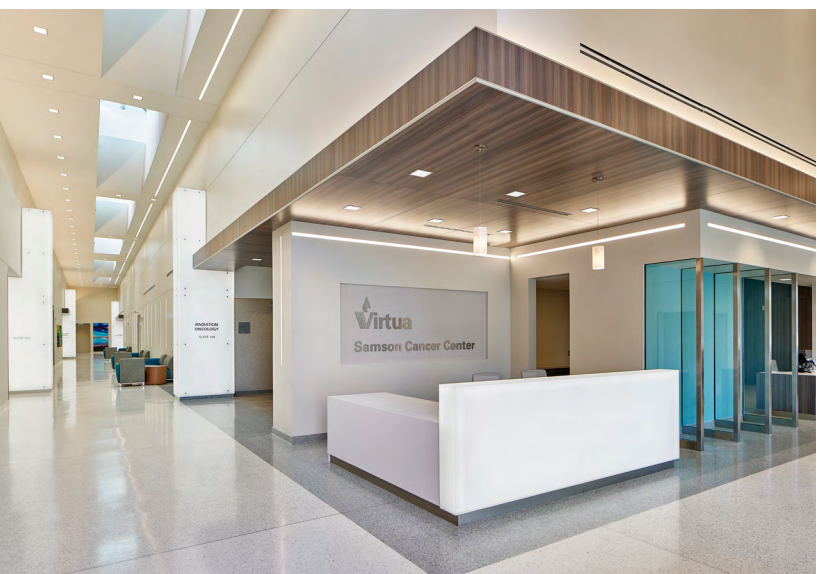
Square - Precision Optics

- Deep cone with 45° cutoff
- Die cast shallow





Virtua Samson Cancer Center





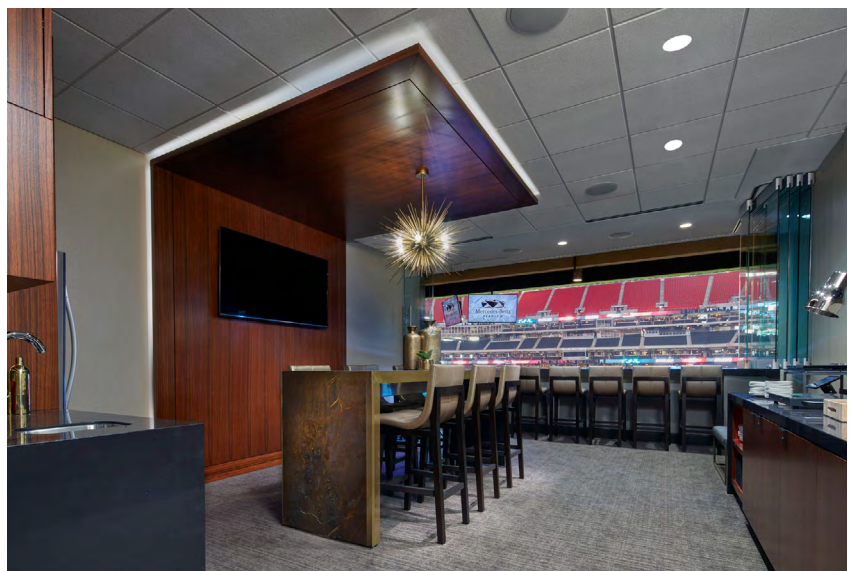
Corporate Office

Scott D McDonald © Gray City Studios



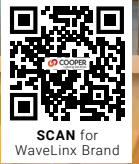


Mercedes Benz Stadium



WaveLinx

- Digital Lighting Control Solutions



SCAN for WaveLinx Brand

SIMPLE. SCALABLE. INSIGHTFUL.

WaveLinx LITE



WaveLinx LITE is a cost effective, wireless digital lighting control system, with out-of-the-box functionality, that saves energy and meets code. Customize installations using the secure, simple WaveLinx mobile app.



SCAN for WaveLinx LITE

WaveLinx PRO



WaveLinx PRO is a wireless lighting control solution, for connected spaces, that significantly reduces a building's energy consumption. From a single floor to an entire campus, WaveLinx PRO connects more than lighting assets; it shares aggregated sensor data with the WaveLinx CORE platform and other building systems, so building owners can improve operations, spaces environment, and tenants' experience using a desktop or mobile app.



SCAN for WaveLinx PRO



LITE Tilemount Sensor

The WLST tilemount sensor kit provides occupancy/vacancy sensing and daylight dimming capabilities as part of the innovative WaveLinx Bluetooth enabled system.



LITE Node

The WaveLinx LITE Node (OEM-WLN) is a wireless to 0-10V control module designed to be integrated into the luminaire. The LITE Node offers two continuous 0-10V output channels that can be used to control dim-to-off 0-10V LED drivers with auxiliary power.



PRO Tilemount Sensor

The WPST tilemount sensor kit provides occupancy/vacancy sensing and daylight dimming capabilities as part of the innovative WaveLinx Bluetooth enabled system.



PRO Node

The WaveLinx PRO Node (OEM-WPN) is a wireless to 0-10V control module designed to be integrated into the luminaire. The adapter offers two continuous 0-10V output channels that can be used to control dim-to-off 0-10V LED drivers with auxiliary power.



Portfolio

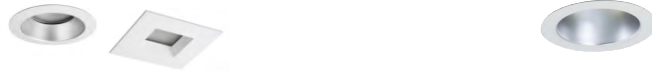
LED Product Selection Guide

March 2024

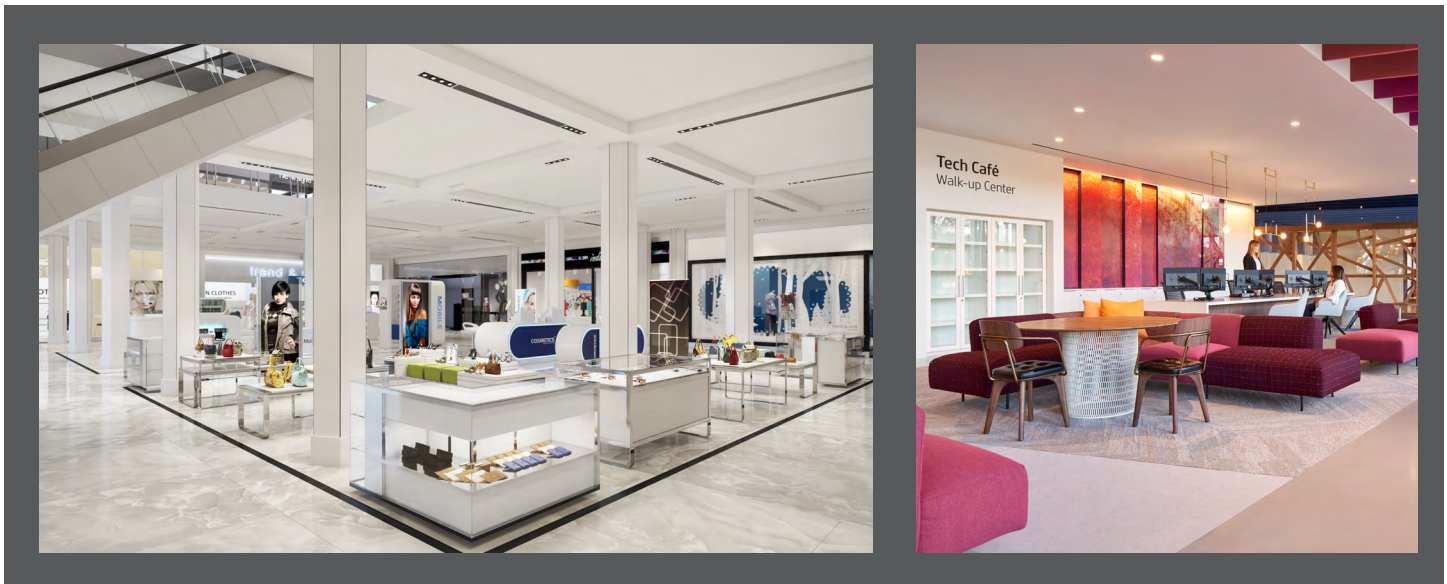
Specification grade product family combining energy efficiency with superior cutoff, optical performance and control for Architectural applications. This complete family designed for glare free illumination from recessed downlights and cylinders is complimented by directional/accent and wall wash luminaires to seamlessly complete all spaces including offices, education, retail, hospitality and healthcare. Comprehensive line includes a multitude of driver options, color temperatures, CRI, beam distributions and reflector finishes.

portfolio-lighting.com

Adjustable LED Selection Guide



Aperture Size	2-inch				3-inch					
Nominal Lumens	500	1000	1500	2000	250	700	1000	1300	1800	2300
Nominal Wattage	7.4	11.0	15.1	21.2						
Dim to Warm		•	•				•	•		
Tunable White		•					•			
Nom CCT	2400K / 2700K / 3000K / 3500K / 4000K / 5000K				2400K / 2700K / 3000K / 3500K / 4000K / 5000K					
CRI	80 / 90 / 97				90 / 97					
Nominal Beam Adjustable	10 / 15 / 20 / 25 / 30 / 35 / 40 / 45 / 50 / 55 / 60 / 65 / 70				10 / 15 / 20 / 25 / 30 / 35 / 40 / 45 / 50 / 55 / 60 / 65 / 70					
Field changeable optics	Y	Y	Y	Y	Y	Y	Y	Y	Y	Y
Round adjustable	•	•	•	•	•	•	•	•	•	•
Square adjustable and wall wash	•	•	•	•						
D010 1%	•	•	•	•			•			
D010TR/TE 120V line voltage or 120-277V 0-10V		•	•				•			
DE010 0-10V 0%		•	•				•			
D010 10%										
D5LT DALI		•	•				•			
DMX		•	•				•			
DL2 Lutron® forward phase		•	•				•			
DLE Lutron® Ecosytem		•	•				•			
DLVP	•	•	•	•			•			
WaveLinx LITE / WaveLinx PRO			•				•			
Emergency options		•								



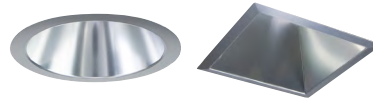
Adjustable LED Selection Guide



Aperture Size	4-inch				6-inch							
Nominal Lumens	900	1300	1800	2800	1000	1500	2000	3000	4500	5500	6500	7500
Nominal Wattage	13.8	22.9	29.1	44.5	15	22.9	29.4	44.5	52.2	60.8	78.7	78.7
Dim to Warm	•	•	•		•	•	•					
Tunable White												
Nom CCT	2700K / 3000K / 3500K / 4000K				2700K / 3000K / 3500K / 4000K							
CRI	80 / 90				80 / 90							
Nominal Beam Adjustable												
Field changeable optics	Y	Y	Y	Y	Y	Y	Y	Y	Y	Y	Y	Y
Round adjustable	•	•	•	•	•	•	•	•	•	•	•	•
Square adjustable and wall wash	•	•	•	•	•	•	•	•	•	•	•	•
D010 1%												
D010TR/TE 120V line voltage or 120-277V 0-10V	•	•	•	•	•	•	•	•	•			
DE010 0-10V 0%	•	•	•	•	•	•	•	•				
D010 10%										•	•	•
D5LT DALI	•	•	•	•	•	•	•	•	•			
DMX	•	•	•	•	•	•	•	•	•			
DL2 Lutron® forward phase	•	•	•	•	•	•	•	•	•			
DLE Lutron® Ecosytem												
DLVP												
WaveLinx LITE / WaveLinx PRO												
Emergency options												



Downlights LED Selection Guide



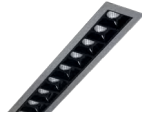
Aperture Size	6-inch General Illumination																							
	250	500	800	1000	1500	2000	2500	3000	3500	4000	4500	5000	5500	6000	6500	7000	7500	8000	9000	10000	11000	12000	13000	15000
Nominal Lumens	250	500	800	1000	1500	2000	2500	3000	3500	4000	4500	5000	5500	6000	6500	7000	7500	8000	9000	10000	11000	12000	13000	15000
Nominal Wattage	4	8	11	11	17	23	33	33	40	48	50	59	63	66	69	76	81	88	101	115		1403	152	171
Nominal LPW		95	93	108	102	96	83	97	90	90	98	95	97	93	97	94	106	104	102	93			89	97
Dim-to-Warm			•	•	•	•	•		•	•	•					•								
VividTune Tunable White				•	•	•	•	•	•	•	•													
BioUp			•	•	•	•	•																	
Nom CCT																								
CRI	90, 97 and 98CRI																							
Nominal Beam Downlight																								
Narrow Beam Reflector	25°																							
Medium Beam 50° Cutoff Reflector	50°																							
Medium Beam 45° Cutoff Reflector	50°																							
Wide Beam Reflector	75°																							
Shallow Reflector	90°																							
Deep Reflector Optic Based																								
Non Conductive - Dead Front Reflector	90°																							
Open Wall Wash Reflector	Single, double, corner																							
Lensed Wall Wash Reflector	Single and double																							
Square Medium Beam Reflector 50° Cutoff	55°																							
Square Medium Beam Reflector 45° Cutoff	55°																							
Square Shallow Reflector	90°																							
Square Deep Reflector Optic Based Distribution																								
Square Lensed Wall Wash Reflector																								
Retrofit	Round																							
Remodel	Round																							
Cylinder	Up to 6000 lumens																							
Shallow Cylinder	Up to 4000 lumens																							
D010 1%	•	•	•	•	•	•	•	•	•	•	•	•	•	•	•	•	•	•	•	•	•	•	•	•
D010TR/TE 120V line voltage or 120-277V 0-10V	•	•	•	•	•	•	•	•	•	•	•	•	•	•	•	•	•	•	•					•
DE010 0-10V 0%		•	•	•	•	•	•	•	•	•	•	•	•	•	•	•	•	•	•	•	•	•	•	•
D5LT DALI		•	•	•	•	•	•	•	•	•	•	•	•	•	•	•	•	•	•	•	•	•	•	•
DMX			•	•	•	•	•	•	•	•	•	•	•	•	•	•	•	•	•					•
DLE Lutron® Ecosystem			•	•	•	•	•	•	•	•	•	•	•	•	•	•	•	•						
DLVP			•	•	•	•	•	•																
Wavelinx PRO / Wavelinx LITE	•	•	•	•	•	•	•	•	•	•	•	•	•	•	•	•	•	•						
Emergency Options	•	•	•	•	•	•	•	•	•	•	•	•	•	•	•	•	•	•						

Downlights LED Selection Guide



Aperture Size	2-inch				8-inch															
	500	1000	1500	2000	1000	1500	2000	3000	4000	5000	6000	7000	8000	9000	10000	12000	15000	17500	20000	
Nominal Lumens	500	1000	1500	2000	1000	1500	2000	3000	4000	5000	6000	7000	8000	9000	10000	12000	15000	17500	20000	
Nominal Wattage	7.3	11	16	21.2	10.2	14.4	21.3	27.1	40.9	53	59.5	75.9	74.4	86.1	106.3	118	159	177	177	
Nominal LPW	68.5	91	93.8	94.3	98	104.2	93.9	110.7	97.8	94.3	100.8	92.2	107.5	104.5	94.1	101.4	94.6	98.8	113	
Dim to Warm	•	•	•	•	•	•	•	•	•		•			•						
VividTune tunable white		•																		
Nom CCT	2400K / 2700K / 3000K / 3500K / 4000K / 5000K				2700K / 3000K / 3500K / 4000K / 5000K															
CRI	80 / 90 / 97				80 / 90 / 97															
Nominal Beam Downlight	15 / 25 / 40 / 55																			
Narrow Beam	15°				15°				30°				34°							
Medium Beam 50° Cutoff	25°				40°				44°				46°							
Medium Beam 45° Cutoff					73°															
Wide Beam	40°, 55°																			
Shallow	•				86°															
Non Conductive - Dead Front																				
Open Wall Wash					Single and Double															
Lensed Wall Wash	•																			
Square Medium Beam Downlight 50° Cutoff	•																			
Square Medium Beam Downlight 45° Cutoff																				
Square Shallow Downlight	•																			
Square Lensed Wall Wash	•																			
Retrofit	•				•															
Remodel	•				•															
Cylinder	•				up to 6,000 lumens															
Shallow Cylinder	•				up to 6,000 lumens															
D010 1%	•	•	•	•	•	•	•	•	•				•	•					•	
D010TR/TE 120V Line Voltage or 120-277V 0-10V		TR	TR		TR	TR	TR	TR	TR	TE	TE	TE	TR	TR	TE	TE	TE	TE	TE	TE
DE010 0-10V 0%		•	•		•	•	•	•	•		•		•	•		•				
D5LT DALI		•	•		•	•	•	•	•		•		•	•		•				
DMX		•	•		•	•	•	•	•		•		•	•		•				
DL2 Lutron® Forward Phase		•	•		•	•	•	•	•		•		•	•		•				
DLE Lutron® Ecosystem		•	•		•	•	•	•	•				•	•						
DLVP	•	•	•	•	•	•	•													
Wavelinx PRO / Wavelinx LITE	•				•															
Emergency Options	•				•															

Multi-head LED Selection Guide



Aperture Size	1-inch downlight	1-inch adjustable	4-inch	
Nominal Lumens	200	200	800	1200
Nominal Wattage	3.1 - 34.7	3.1 - 34.7	10-56	
Nom CCT	2700K / 3000K / 3500K / 4000K	2700K / 3000K / 3500K / 4000K	2400K / 2700K / 3000K / 3500K / 4000K / 5000K	
CRI	90	90	90 / 97	
Nominal Beam Adjustable	30/50	30/50	10 / 15/20/25/30/35/40/45/50/55/60/65/70	
Field Changeable Optics	N	N	Y	
New Construction	•	•	•	•
Install from Below	•	•	•	•
D010 1%	•	•	•	•
D010TR/TE 120V Line Voltage or 120-277V 0-10V	•	•	•	•
DE010 0-10V 0%	•	•	•	•
D010 10%	•	•	•	•
D5LT DALI	•	•	•	•
DMX	•	•	•	•
DL2 Lutron® Forward Phase	•	•	•	•
DLE Lutron® Ecosystem	•	•	•	•
DLVP	•	•	•	•
Wavelinx PRO / Wavelinx LITE	•	•	•	•
Emergency Options	•	•	•	•



Lighting Brands

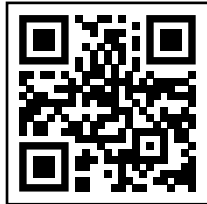
Ametrix
AtLite
Corelite
Ephesus
Fail-Safe
HALO
HALO Commercial
Invue
iO
Iris
Lumark
LumarkAP
Lumière
McGraw-Edison
Metalux
MWS
NeoRay
Portfolio
PrentaLux - 3D Printed Lighting
RSA
Shaper
Streetworks
Sure-Lites

Controls Brands

Greengate
Fifth Light
Intelligent Lighting Controls

Connected Lighting Systems and Smart Spaces Platform

WaveLinx
Trellix Infrastructure



SCAN
for more
Portfolio
information

Cooper Lighting Solutions
1121 Highway 74 South
Peachtree City, GA 30269
P: 770-486-4800
www.cooperlighting.com

Canada Sales
5925 McLaughlin Road
Mississauga, Ontario L5R 1B8
P: 905-501-3000
F: 905-501-3172

© 2024 Cooper Lighting Solutions
All Rights Reserved
Printed in USA
Publication No. BR52034024
March 2024

Cooper Lighting Solutions is a registered trademark.

All other trademarks are property of their respective owners.

Product availability, specifications, and compliances are subject to change without notice.