

Infrastructure | Public Works
Lighting Solutions





Exterior

UFLD

Streetworks

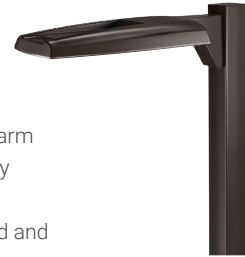
The UFLD LED floodlight luminaire combines high-efficiency optics, superior thermal management and energy efficiency in a cost-effective solution. The compact, robust design incorporates a separate driver compartment for maximum heat dissipation to insure longevity of both the fixture and the optics. The UFLD luminaire uses precision engineered optics delivering superior uniformity and excellent illumination to the targeted application. Typical applications include area lighting for security, building facade lighting, accent and signage lighting in both commercial and industrial applications. The UFLD luminaire is UL/cUL listed for wet locations and is IP66 rated.



USSL / USSL DISCRETE

Streetworks

The USSL™ LED area/site luminaire delivers a new level of performance, versatility and value in a low profile, patent pending, architectural design that delivers significant installation and energy savings. A versatile mount arm makes retrofit installation simple, resulting in reduced installation time and additional labor savings. With energy savings greater than 62%, the Prevail fixture replaces 150-400W metal halide fixtures in general area lighting applications such as parking lots, walkways, roadways and building areas. The Prevail luminaire is UL/cUL listed and is IP66 and 3G vibration rated to insure long term reliability.



AXCS / AXCL AXCENT

Lumark

The Lumark Axcent LED luminaire provides a flush-mounted, architectural design with high performing energy efficient illumination resulting in up to 95 percent energy and maintenance savings. The die-cast aluminum construction along with stainless steel hardware, gasketed housing, and sealed optical compartment makes the Axcent impervious to contaminants. The Axcent replaces 70W up to 450W metal halide equivalents making it ideal for pathway illumination, building entrances, vehicle ramps, schools, tunnels, stairways, loading docks and floodlighting applications.



RPGC

Lumark

The Lumark RPGC Round Parking Garage and Canopy luminaire is an innovative, energy-efficient LED fixture. The RPGC is designed to replace traditional HID fixtures on a one-to-one basis from 150W up to 250W HID. The low profile, rugged construction, features a selectable lumen switch that allows for seamless integration into illuminating parking garages, canopy, stairwells and low-bay retail installations where high security illumination and energy savings are needed.



APVT

Metalux

The APVT LED Series is compact Vaportite fixture ideal for wet location environments. The APVT incorporates a sealed and gasketed polycarbonate housing with a high impact polycarbonate diffuser. The APVT performance is ideal for interior and exterior applications including canopy, warehouse and light commercial environments.





Roadway / Walkway / Tunnel

ARCH-N ARCHEON NANO

Streetworks

The Archeon Nano LED roadway luminaire delivers all the performance benefits of the latest Eaton LED platforms and technologies with a modern, yet familiar cobrahead form factor. This discrete LED solution with the patented, high-efficiency AccuLED Optics™ system, provides uniform and energy conscious illumination for municipal streets and highways. Our customer focused features include single latch tool-less entry, industry leading surge protection options, with superior lumen maintenance and performance, all in an economical, architectural design.



ARCH-S ARCHEON SMALL

Streetworks

The Archeon Small LED roadway luminaire delivers all the optical performance benefits from the advanced LED technology in a modern, yet familiar cobrahead design. The patented, high-efficiency AccuLED Optics system provides uniform and energy conscious illumination and our customer-focused features include single latch tool-less entry for easy installation and maintenance, and industry-leading surge protection and control options.



ARCH-M ARCHEON MEDIUM

Streetworks

The Archeon Medium LED roadway luminaire delivers all the optical performance benefits from the advanced LED technology in a modern, yet familiar cobrahead design. The patented, high-efficiency AccuLED Optics™ system provides uniform and energy conscious illumination and our customer-focused features include single latch tool-less entry for easy installation and maintenance, and industry-leading surge protection and control options.



ARCH-L ARCHEON LARGE

Streetworks

The Archeon Large LED roadway luminaire delivers all the optical performance benefits from the advanced LED technology in a modern, yet familiar cobrahead design. The patented, high-efficiency AccuLED Optics™ system provides uniform and energy conscious illumination and our customer-focused features include single latch tool-less entry for easy installation and maintenance, and industry-leading surge protection and control options.



CRTK2 CARETAKER

Streetworks

The Caretaker2 LED area and roadway luminaire combines high performance, low maintenance and easy installation in a simple, extremely economic package that has been designed for years of worry-free operation. The Caretaker luminaire is ideal for wall-mounted security lighting, residential street lighting, perimeter area lighting, parking areas, loading platforms, boat docks, access drives and pathways.



CST CELESTEON

Streetworks

The Celesteon LED high mast luminaire combines high output and efficiency with easy install and affordability. Designed for new and retrofit high-lumen applications, the Celesteon LED high mast is ideal for highways, interchanges, ports, rail yards, container yards, parking lots, correctional facilities, security lighting, treatment plants and other facilities in need of high lumen packages with accurate optical control.



VAL VALET

Streetworks

The Valet LED Tunnel luminaire features a rugged and low profile housing construction incorporating patent pending, modular LED LightBAR™ technology. Through superior optical control, Valet delivers uniform and energy-efficient illumination optimized to improve vehicular movement in roadway tunnel and underpass applications. UL and cUL listed for wet locations.



PMM MESA

Streetworks

The simple geometric form of MESA allows it to adapt to either contemporary or traditional architectural settings. Available in single or twin pole mount configurations with optional wall mounting capability, MESA mounting options allow for harmonized site design, whether at the entryway or in the parking lot. UL and CUL listed for use in wet locations.



UTLD LED

Streetworks

The UTLD Traditionaire LED outdoor luminaire displays the old-fashioned charm of traditional area lighting, enhancing any setting with distinctive styling. The high-lumen downlight configuration uses discreet LEDs with patented AccuLED Optics technology to deliver uniform and efficient illumination to pedestrian and roadway applications.



LXF / LXT LEXINGTON

Streetworks

The Lexington luminaire enhances any street or pathway setting with the heritage charm of traditional lantern style post top lighting. It tastefully complements the architectural and environmental design needs of parks, campuses and residential streets.



ACN / ARC / CLB GENERATION SERIES

Streetworks

The ACN/ARC/CLB Generation Series' traditional character, with updated styling and superior photometric performance, offers roadway illumination and uniformity to set a new standard for decorative post top luminaires. Its traditional styling ties in well with historic districts, downtown streetscapes, walkways and parking lots.



GAR / GAT / GLC GENERATION SERIES

McGraw-Edison

The GAR/GAT/GLC Generation Series' traditional character with updated styling and superior photometric performance offers roadway illumination and uniformity to set a new standard for decorative post top luminaires. Its traditional styling ties in well with historic districts, downtown streetscapes, walkways and parking lots.



Roadway / Walkway / Tunnel





Sports Lighting

LUMASPORT 16

Ephesus

Built to meet the variable needs of new and retrofit applications at professional and collegiate level outdoor stadiums. The Lumasport 16 luminaire incorporates several revolutionary technologies including new, integrated louver and reflector optics that balance light delivery, cutoff, glare control, and playability while meeting the stringent performance requirements of fans, players, and broadcast.



LUMADAPT 8

Ephesus

The Lumadapt 8 LED luminaire, integral to the Lumadapt LED lighting system, delivers industry-first features and performance. Designed for sports and entertainment venues, Lumadapt 8 provides color temperature tuning, integrated RGBA color flooding, and beam tuning while capturing health and performance data which is stored securely in the data cloud. Turn on the features you need, as you need them, and as additional capabilities are offered to always keep your facility's lighting on the cutting edge.



ARENA DOWNLIGHT

Ephesus

The Arena Downlight 550 and 750 provide professional caliber sports lighting with features designed with indoor hockey and basketball arenas, field houses, and similar sports venues in mind. Offering versatility and flexibility, the Arena Downlight 550 and 750 deliver controllable, maintenance-free, quality lighting with a great return on investment.



OHB

Metalux

OHB (Optimized High Bay) LED High Bay luminaires are designed for a wide variety of applications and mounting heights while delivering a value proposition of industry leading performance and reliability to customers. It's scalable LED module assembly offers exceptional performance with associated benefits of precision designed optics, energy savings, extended system life, and a reduced carbon footprint. The OHB is an energy-efficient one-for-one replacement of linear fluorescent and HID fixtures and is the ideal linear high bay fixture for use in industrial, manufacturing, and gymnasium applications.



VHB

Metalux

The VHB is designed for a wide variety of applications and mounting heights with a balance of fixture performance and affordability. Precision designed optics, multiple distributions, lumen outputs and color temperatures make the VHB ideal for industrial, commercial, manufacturing, gymnasium and other applications that utilize traditional linear fluorescent and HID high bays.



Indoor



CGT

Metalux

The CGT Panel LED series is the contractor go-to panel providing customers an affordable, low glare panel that fits in shallow plenums with room to spare. Acrylic micro optics provide uniform illumination from corner to corner. It's back-lit, durable design provides immediate opportunities to replace fluorescent fixtures with a LED solution. CGT is an excellent lighting solution for commercial office spaces, schools, healthcare and retail merchandising areas.



CRUZE RECESSED

Metalux

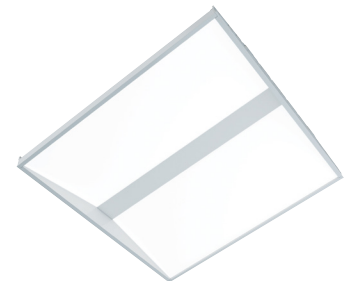
The Cruze™ LED Series combines contemporary styling and optimal illumination design with the technology of Eaton's Linear LED platform. Its high performance LED system with advanced light distribution and attractive appearance delivers unprecedented energy savings, comfort and aesthetics all at an affordable price. Cruze offers a perfect balance of form and function making it an ideal choice for commercial office spaces, schools, hospitals, and retail merchandising areas.



ENCOUNTER

Metalux

The Metalux Encounter™ Series redefines ambient lighting by blending contemporary styling with Eaton's proprietary WaveStream™ technology. The result is exceptional performance and superior energy savings – all at an affordable price. The highly efficient LED system with advanced optical design delivers optimal light uniformity, resulting in soft, natural light for superior visual comfort. Encounter is a perfect balance of form and function, making it an ideal choice for commercial interiors.



ST SERIES

Metalux

The Metalux ST commercial series is a full width and DLC listed LED strip light. It is designed to retrofit and replace fluorescent strip lights or for new construction. The ST comes standard with continuous row mount aligner bracket, tool-less channel cover, 4000 or 5000K CCT, universal voltage cold-start driver, and five year warranty. These construction features make the ST a combination of quality, performance, and value that helps make ordering, installing and saving energy the top focus of any stock or project business.



CWPLD

Metalux

CWPLD series is a versatile LED wraparound series with uniform, softlight at up to 60% energy savings over fluorescent light sources. This versatile wrap is equipped with Universal Voltage, 0-10 Volt dimming electronics and quick row or suspension mount capability. Patent pending easy mounting channel reduces installation time when row mounting fixtures together. Premium optical linear prisms provide even light distribution, minimizing the number of fixtures required to light a space. These CWPLD series are an ideal choice for commercial, retail or residential applications.



SWLED

Metalux

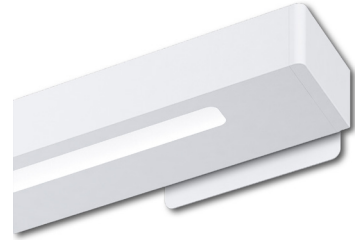
SWLED is a connected LED surface or wall mount luminaire which can be used in a broad range of commercial and industrial applications. This series delivers high quality illumination with the latest solid state lighting and electronic driver technology for optimal performance and maximized energy efficiency. Offered with three different lens distributions and six different sensor options the SWLED is an ideal choice for general purpose lighting where customers want to maximize energy efficiency or take full control of the space with enterprise-level connected sensors.



JAYLUM

Corelite

The Corelite Jaylum merges affordability and performance in this timeless direct/indirect pendant. The Jaylum is designed to accompany almost any décor with clean lines and a slim profile. The J2 LED series provides up to 93% downlight using a single LED module to efficiently deliver light to the task at hand. The J3 LED series offers a wide optical distribution with up to 85% uplight and industry-leading performance to meet increasingly stringent building energy requirements. Two lens options, integral daylight/occupancy sensors, integral emergency battery packs, Fifthlight DALI addressability, companion wall-mount and sconce allows this fixture to meet all of your specific project needs. Best of all, the Jaylum incorporates economically engineered steel-construction and contractor-friendly installation features for which Corelite is known!



FM DRUM

Metalux

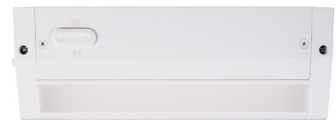
The Metalux FM is an Energy Star LED flushmount with a field selectable CCT switch that enables customization (from warm to bright white) to suit any decor. The FM has a 120V FCC Class B dimming driver, round or square low-profile lens, and LEDs rated for 50,000 hours. The FM LED energy savings is up to 80% over traditional incandescent or fluorescent options. Typical surface mount applications include bedroom, closet, corridor, stairway and utility rooms.



HU11

Halo

The Halo HU11 Undercabinet gives homeowners clean contours to their kitchen and washroom cabinets with its sleek profile and low-glare optics. With the HU11's SeleCCTable tuning, homeowners can enjoy a uniform look to their kitchen lighting at an attractive price. Plug-in, direct-wire, easy-access mounts, and linkable install features make the HU11 DIY and contractor friendly across the board.



HLB SERIES DOWNLIGHT

Halo

The HLB is an ultra-thin LED lens downlight with a remote driver / junction box ideal for new construction and renovation work. Simplified installation in drywall or suspended ceilings eliminates recessed cans saving time and money. The HLB can install from below the ceiling in as little as a 1-1/2" plenum height and can be used in direct contact with insulation and is airtight. Distribution patterns work well in low to medium ceiling heights, applications are virtually universal including living and dining areas, bedrooms, closets, hallways, bathrooms, kitchens, basements, soffits, entryways and porches.



LCR SERIES

Halo

The Halo LCR direct mount LED module with remote driver / junction box suitable for light commercial applications. This high-powered LED module installs without the use of a recessed housing, reducing time and expense. The regressed lens and smooth baffle provide high optical cutoff and improves visual comfort. The wide distribution pattern is ideal for general area illumination. Field selectable color temperature and high color rendering provide excellent color performance. LCR applications include mixed-use, healthcare, education and hospitality environments.



Indoor





High Bays

VHB

Metalux

The VHB is designed for a wide variety of applications and mounting heights with a balance of fixture performance and affordability. Precision designed optics, multiple distributions, lumen outputs and color temperatures make the VHB ideal for industrial, commercial, manufacturing, gymnasium and other applications that utilize traditional linear fluorescent and HID high bays.



OHB

Metalux

OHB (Optimized High Bay) LED High Bay luminaires are designed for a wide variety of applications and mounting heights while delivering a value proposition of industry leading performance and reliability to customers. It's scalable LED module assembly offers exceptional performance with associated benefits of precision designed optics, energy savings, extended system life, and a reduced carbon footprint. The OHB is an energy-efficient one-for-one replacement of linear fluorescent and HID fixtures and is the ideal linear high bay fixture for use in industrial, manufacturing, and gymnasium applications.



BENCHMARK

Metalux

Benchmark LED is designed for a wide variety of industrial applications where higher ambient performance is required for complex environments. Its heavy-duty diecast aluminum body provides durability, optimal thermal control, and longer system life. Its advanced optical systems delivers premium efficacy and multiple distributions. The Benchmark is an ideal high bay fixture for use in industrial, manufacturing, cold storage, large indoor, sports/recreation, and retail applications.



LHB

Metalux

LHB LED Linear High Bay luminaires are designed for a wide variety of applications and mounting heights while delivering an affordable value proposition to customers. It's full body construction with center driver housing provides durability and thermal control. The LHB comes standard with a diffused lens providing added protection and glare control. The LHB is an energy-efficient one-for-one replacement of linear fluorescent and HID fixtures and is the ideal linear high bay fixture for use in warehousing, manufacturing, gymnasium, and big box/retail applications.



A modern school cafeteria with a mezzanine level. The mezzanine has green railings and a green staircase. The ground floor has several round tables with attached benches. The walls are light-colored with green doors. The ceiling has recessed lighting.

High Impact / Vandal

FW SERIES

Fail-Safe

The VHB is designed for a wide variety of applications and mounting heights with a balance of fixture performance and affordability. Precision designed optics, multiple distributions, lumen outputs and color temperatures make the VHB ideal for industrial, commercial, manufacturing, gymnasium and other applications that utilize traditional linear fluorescent and HID high bays.



TR15 LED

Fail-Safe

The 15" Terrapin LED provides exceptional aesthetics with impressive strength and is available in 20, 30 or 40 watt lumen packages. Polycarbonate lens, clear or opal, combined with four face plates provides a choice of different styles. Choose a photocell or motion sensor for control. Select an emergency battery pack to provide egress illumination.



FWL & FWLDL

Fail-Safe

The low profile Fail-Safe FWL and FWLDL are perfect where non-obtrusive confinement / vandal resistant products are required. Combining form and function, the FWL (up/down) and the FWLDL are perfect for mental health facilities, public transportation areas, psychiatric wards, detention centers, stairwells, corridors and schools



HVL

Fail-Safe

The Fail-Safe Harmony VR Linear provides exceptional aesthetics with remarkable strength. Fail-Safe's LED linear model options and connection configurations offer unmatched versatility for a wide range of applications. Die-Cast end caps, heavy extruded aluminum body provides strength and rigidity for complex environments while an extruded linear ribbed polycarbonate lens obscures the lamp image and spreads light evenly. The Harmony VR Linear is ideal for areas where the need for aesthetics and protection from vandalism are critical. Perfect for schools, hospitals, corridors, dormitories, public restrooms, common areas, and transit.



FUSL LED

Fail-Safe

FUSL LED combines maximum security construction features with energy savings technology. This surface mount luminaire utilizes a four-sided, sloped clamshell housing, security lensing and tamper resistant fasteners to maximize impact resistance and prevent contraband concealment and unauthorized fixture penetration. ETL listed for damp locations.



A modern office lounge area featuring several light grey armchairs arranged around a round, light-colored wooden table. The table holds a few books. The room has a blue patterned carpet, a ceiling with recessed lighting and a grid of acoustic tiles, and a wall with a blue, textured pattern. In the background, there are yellow structural elements and large windows.

Controls

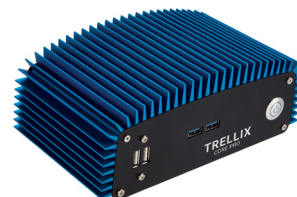
WAVELINX

Deliver powerful technology with WaveLinX, an all-in-one connected lighting solution that's easy to install and get running. WaveLinX offers the most expansive product offering on the market for indoor, outdoor and industrial applications. It's an ideal solution for network or stand-alone installations. Out-of-the-box functionality, easy set up and programming helps contractors save time and finish jobs faster.



TRELLIX

Trellix is an IoT platform with smart applications for commercial spaces that connect WaveLinX's intelligent sensors integrated into the light fixture to provide operational efficiency, improve occupant experience and deliver actionable insights through the aggregation of valuable data.



0-10V WBSD Decorator Dimmer

Greengate

The 0-10V WBSD Decorator Dimmer provides a full-range of linear-slide dimming control of 0-10V compatible light sources. These units are ideal for light commercial applications and are compatible with decorator style devices and wallplates. Units feature a preset ON/OFF switch that automatically returns the controlled light(s) to a preset level without disturbing the brightness level. The device is designed for both single-pole (one location) and 3-way (multi location) applications.



0-10V WBSD Slide Dimmer

Greengate

The 0-10V WBSD Slide Dimmer provides a full-range of linear-slide dimming control of 0-10V compatible light sources. These units are ideal for light commercial applications and are compatible with decorator style devices and wallplates. Units feature a preset ON/OFF switch that automatically returns controlled light(s) to preset level without disturbing the brightness level. Neutral is not required for installation of the device.



0-10V WBSD Preset Slide Dimmer

Greengate

1200VA, 120/277 Volt AC 60Hz, Single-Pole & 3-Way, WBSD-010M-C1 Preset Electro-Mechanical Electronic 0-10VDC Fluorescent Slide Dimmer, 0-10VDC LED Power Supply Dimmer, Suitable for use with Class 1 or Class 2 wiring - White face assembled on device, Ivory and Light Almond color change kits included. The WBSD-010M-C1 can control a load directly or connect to the SP20-RD4 as a manual pushbutton to toggle the load.



0-10V OSW WALLBOX DIMMER SENSOR

Greengate

The OSW 0-10V dimmer sensor is a 3-in-1 solution that combines the functionality of a switchpack, a sensor and a 0-10V dimmer into one wallbox device, helping customers save labor costs while meeting the latest energy codes and standards. The requirements that can be met incorporating this device include Area Control, Automatic Lighting Shutoff, Manual ON or Partial ON, Multi-level Lighting Control and Occupancy Sensor Control. This product can be used in single-pole (one location) and 3-way (multi-location) applications and is compatible with Cooper Lighting Solution decorator style devices and wallplates.



0-10V Dual Tech Occupancy Sensor Dimmer

Greengate

The OSW 0-10V Dual Tech Sensor Dimmer is a 3 in 1 solution that combines functionality of a switchpack, a sensor and a 0-10V dimmer into one wallbox device to help customers save labor costs as well as meet the latest energy codes and standards. The requirements that can be met by a solution incorporating this device include Area Control, Automatic Lighting Shutoff, Manual ON or Partial ON (ASHRAE 90.1 only), Multi-level Lighting Control and Occupancy Sensor Control. This product can be used in Single-pole (one location) as well as 3-Way (multi-location) applications and is aesthetically compatible with Cooper Lighting Solutions' decorator style devices and wallplates.



NeoSwitch ONW Occupancy Wall Sensor

Greengate

Featuring motion sensing lighting control, the ONW Passive Infrared (PIR) Single Level Occupancy Sensing Wall Switch is also a conventional wall switch. Designed for energy savings and convenience, the switch detects motion from a heat-emitting source (such as a person entering a room) within its field-of-view and automatically switches lights ON. It is available in both neutral and non-neutral wiring options for installation, making it ideal for retrofit applications.



OAC MicroSet Dual Tech Ceiling Sensors

Greengate

Offering the most complete sensing equipment available today, the OAC-DT sensors' dual technology combines ultrasonic and Passive Infrared (PIR) technologies, eliminate false activations or deactivations. These sensors are also equipped with MicroSet self-adjusting technology, which provides an adaptive and airflow tolerant technology, making them ideal for spaces which have increased airflow due to higher occupant levels. The MicroSet technology also drastically simplifies and reduces a contractor's installation and adjustment time. The sensors are available in both line-voltage and low-voltage versions and compatible with the SP20 switchpacks.



LiteKeeper 8 Lighting Control Panel

Greengate

The LiteKeeper 8 stand-alone lighting control panel is an all-inclusive premium grade system for applications that would traditionally use a time clock in conjunction with contractors. Supplied with 8 relays, the state-of-the-art lighting control panel features several relay options and more standard features than any other stand-alone panel on the market.



ROOM CONTROLLER

Greengate

Room Controller is a low voltage control panel for On/Off and dimming loads, Click & Go ready with RJ45 QuickConnect ports eliminates wiring errors. The Room Controller wallstations are pre-engraved low voltage switches that operate on 24 VDC power supplied by the Room Controller. Each wallstation is designed to fit in a standard decorator opening and has two QuickConnect ports for Room Controller local network connections to eliminate wiring errors. The Input/Output Device (OCC-RJ45) provides connection of any Greengate low voltage occupancy sensor.



Open Loop Daylight Sensor/IR Receiver

Greengate

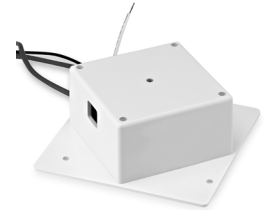
The DSRC-FMOIR is an open loop daylight sensor that measures the natural light contribution in order to automatically adjust the lighting zones. It is part of the Room Controller and DLVP system and provides three easily distinguished light levels: Low (3-300 lux), High (30-3000 lux), and Direct Sun (300-30000 lux). The high light sensor range is selected by default, although this can be adjusted using the IR handheld programmer.



Room Controller/DLVP Receptacle Control

Greengate

The Receptacle Rated Switchpack includes a 20A relay for ON/OFF control of connected outlets. The Receptacle Rated Switchpack connects to the Greengate Room Controller, DLVP power module, or any standard Greengate Occupancy Sensor. Pre-terminated control cable ready with RJ45 ports eliminate wiring errors.



Heavy Duty Switch Pack

Greengate

The Heavy Duty Switchpack provides 15 VDC operating voltage to all low-voltage, 15 VDC, occupancy sensors and daylighting controllers. A single switchpack can provide power for up to five sensors. Up to 10 switchpacks can be connected to one sensor for control of multiple circuits. Isolated contacts may also be used to control HVAC, contractors and motors, etc.



SP20 Switch Pack

Greengate

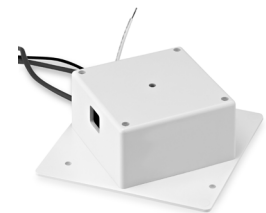
The SP20-RD4 is the latest addition to the Greengate Switchpacks family, delivering a wide array of switching solutions in a single unit. This robust switchpack is designed to deliver unmatched performance. The switchpack features robust and reliable mechanical latching relays, exclusive fail-safe circuitry, daylight harvesting, bi-level switching and is configurable for energy code requirements. The switchpack is specifically designed to handle high inrush electronic ballast loads and offer unmatched durability and service.



RECEPTACLE CONTROL

Greengate

The Receptacle Rated Switchpack includes a 20A relay for ON/OFF control of connected outlets. The Receptacle Rated Switchpack provides energy efficient control of receptacles.



Emergency Power Control

Greengate

The CEPC device allows the control of emergency lighting by any Eaton lighting control system. The CEPC senses a local single normal power circuit. As long as normal power is present the CEPC permits normal and emergency switching of the lighting load from Eaton lighting control systems. If normal power is lost for any reason, the CEPC will force the connected emergency fixtures Full On. The CEPC can be wired as either a control device along with a relay panel and occupancy sensor, or as a shunt to bypass line voltage devices when normal power fails.



High Bay Fixture Mount Sensors

Greengate

The OEF-P PIR Fixture Mount High Bay/Low Bay Dimming Occupancy Sensor with Integrated Photocell and Two Interchangeable Lenses provides 1-10V control. The OEF-P is easy to program and set for desired 1-100 percent continuous dimming levels during daylighting.





Lighting Product Lines

Ametrix
AtLite
Corelite
Ephesus
Fail-Safe
Halo
Halo Commercial
Invue
io
Iris
Lumark
Lumière
McGraw-Edison
Metalux
MWS
Neo-Ray
Portfolio
RSA
Shaper
Streetworks
Sure-Lites

Controls Product Lines

Fifth Light Technology
Greengate
iLight (International Only)
iLumin
Zero 88

Connected Lighting Systems

Distributed Low-Voltage Power
HALO Home
iLumin Plus
LumaWatt Pro
Trellix
WaveLinx



Cooper Lighting Solutions
1121 Highway 74 South
Peachtree City, GA 30269
P: 770-486-4800
www.cooperlighting.com

© 2020 Cooper Lighting Solutions
All Rights Reserved
Publication No. BR510101EN
August 2020

Cooper Lighting Solutions is a registered trademark.

All other trademarks are property of their respective owners.

Product availability, specifications, and compliances are subject to change without notice.