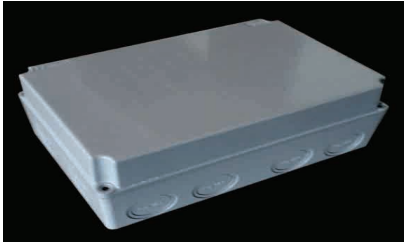


HUN1050DALI/EN CONSTANT CURRENT DRIVER

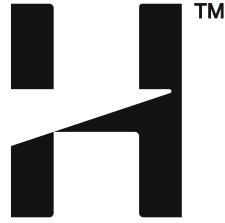
Cat. No. TCI-122413

TCI-122413EN



Driver with weather-proof enclosure
(Cat. TCI-122413EN)

Dimensions: 175mmx125mmx100mm
7" X 5" X4"



The HUNZA TCI-122413 is a 25-50 Watt electronic, constant current, remote driver available to power Hunza series version PURE LED fixtures. It includes a DIP-SWITCH control system that enables the unit to be set at a range of current outputs from 350mA to 1050mA. 1-10v and Dali dimmable.

For exterior use, it is highly recommended to install this in a weatherproof box, available as an option from Hunza. The PC-17-02 weatherproof box is a requirement for UL compliance. When this driver is used as a remote power supply, SERIES WIRING is required to connect the fixtures. Please refer to the Hunza PURE LED Series Wiring page for more information on wiring diagrams and fixture loads per driver.

Key specifications:

Input Voltage: 99-264Vac 50-60Hz, 170-280Vdc

Output Voltage: 0V-74V dc (depending on DIP-SWITCH setting)

Output Current: 350 – 1050mA (depending on DIP-SWITCH setting)

Wattage: 25W – 50W (depending on DIP-SWITCH setting)

Temperature range: -25...+50°C, max 85°C

Driver Weight: 0.15kg (5.3oz)

Standards: IP20, RCM (C-Tick), EN, CE, CSA, UL Recognized

Ordering Code: TCI-122413EN

NOTE: At 120 volt input, the maximum wattage reduces to 40 watts



HUNZA™ PURE
OUTDOOR
LIGHTING

HUNZA FACTORY
130 Felton Mathew Ave
Glen Innes
Auckland 1072
New Zealand

Ph: 64-9-528 9471
Fax: 64-9-528 9361
hunza@hunza.co.nz
www.hunzalighting.com

INTERNATIONAL CONTACTS:
www.hunzalighting.com/contact.php
Specifications may change without notice.
Manufactured in New Zealand.
2016 Hunza Productions Ltd.

Specific Technical Data (at 120v input)					
Type	Output	Tolerance	Typ. power	Output voltage range	Operating temperature
Current Output	350 mA	± 6 %	25 W	0 – 74 V	-25 ... +50 °C
Current Output	500 mA	± 5 %	35 W	0 – 72 V	-25 ... +50 °C
Current Output	700 mA	± 5 %	40 W	0 – 57 V	-25 ... +50 °C
Current Output	900 mA	± 5 %	40 W	0 – 44 V	-25 ... +45 °C
Current Output	1,050 mA (default)	± 5 %	40 W	0 – 38 V	-25 ... +45 °C

By using the dip switches, the driver can be set to the current outputs in the table above. The input voltage is 99-264 vac and it has DALI or 1-10 volt dimming functions. It is recommended to be used in a weather-proof enclosure (Cat. HUN1050DALIEN). USA/Canada customers will need to order the Polybox PC-17-02 enclosure.

The table below states the minimum and maximum number of XHP/XPG fixtures you can run at a certain current output. For example, at 350mA you can run up to a maximum 11 fixtures with XHP and up to a maximum 22 fixtures with XPG chips.

	XHP (6V chip)	XPG (3V CHIP)
350mA	1-11	1-22
500mA	1-11	1-22
700mA	1-8	1-18
1050mA (Default)	1-5	1-11