

## FLOOR LITE, PATH LITE, STEP LITE LUMINAIRES (with canister)

### INSTALLATION INSTRUCTIONS

**NOTE:** THESE INSTRUCTIONS MUST NOT CONTRAVENE YOUR LOCAL ELECTRICAL AUTHORITY REGULATIONS, WITH WHICH ALL INSTALLATIONS HERE IN MUST COMPLY. PLEASE KEEP INSTRUCTIONS FOR FUTURE REFERENCE.

Remove the luminaire from the gold coloured canister. Place canister in the desired position. Make sure that the top of the canister is at the finished floor height. Fit conduit to the canister making sure all joints are water tight and pre wire with low voltage cable. Make sure the top of the canister is sealed while the concrete is being poured. Make a waterproof connection using heavy walled adhesive lined heat shrink, to the low voltage cable and slide luminaire into canister .

**Recommendation:**

Run all low voltage cables in flexible conduit for extra protection. Use Hunza Cable Joint Kit CJK#150. 20 watt lamps are strongly recommended due to heat from lamp.

**Note:** This luminaire is NOT suitable for driving over.

**Warning:** Take care to place luminaire in a suitably safe position, due to operating temperature of the luminaire.

**DO NOT** water blast/jet wash this fixture under any circumstances.

### PATH LITE or STEP LITE WITH CANISTER IP68

Fix canister into the desired position. Make sure that the top of the canister is at the finished floor height or step lite canister is flush with the finished wall line. Fit conduit to the canister making sure all joints are water tight and pre wire with low voltage cable. Make sure the top of the canister is sealed while the concrete is being poured. Make a waterproof connection using heavy walled adhesive lined heat shrink, to the low voltage cable and slide luminaire into canister.

**Recommendation:**

Run all low voltage cables in flexible conduit for extra protection. Use Hunza Cable Joint Kit CJK#150. 20 watt lamps are strongly recommended due to heat from lamp.

**Note:** Path Lite is not suitable for driving over.

**Warning:** Take care to place luminaire in a suitably safe position, due to operating temperature of the luminaire.

**Stainless Steel Maintenance:** To maintain the finish of 316 stainless steel it is recommended to wash the luminaire with fresh water from time to time to stop salt and corrosive elements building up. If tea staining appears, a commercially available stainless steel cleaner is recommended to remove this. Electro polishing is recommended in this situation but the fitting will still require regular maintenance. Even an electro polished stainless steel fixture under an eave or roof will suffer from the build up of salt deposits as it will not be washed away by rain.

### LAMP CHANGING

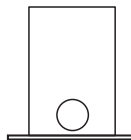
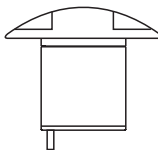
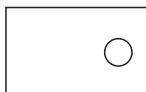
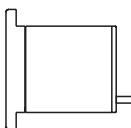
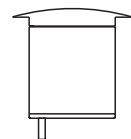
**CAUTION:** Make sure that the power to the luminaire is switched off before attempting to change the lamp. Beware of hot luminaire and lamp. Make absolutely sure when changing lamps that the correct wattage lamp is installed. Incorrect wattage lamps may cause HUNZA<sup>TM</sup> IG series transformers to overload causing them to heat up and turn the luminaires off.

**Lamp Changing Sequence (MR16)**

Only use MR16 lamps where the glass cover sits below the lip of the lamp. Unscrew flange, remove gasket and lens. Pull lamp forward until the ceramic lamp holder appears. Hold lamp holder in one hand and remove lamp with other hand very carefully. Do not touch the glass capsule in the middle of the reflector when pushing the lamp back into the ceramic lamp holder. When replacing gasket and lens, make sure there is no dirt or grit on the gasket. Dirt or grit on the gasket may cause luminaire to leak.

**Gasket and lens sequence**

Place lens on top of lamp and put orange gasket on top of lens. Screw on flange. It is recommended that high quality lamps are used when replacing lamps. Do not over tighten flange as this will make removal difficult and may cause lamp to break.



## STEP LITE, STEP LITE EYELID, PATH LITE LUMINAIRES (no canister)

### INSTALLATION INSTRUCTIONS

**NOTE:** THESE INSTRUCTIONS MUST NOT CONTRAVENE YOUR LOCAL ELECTRICAL AUTHORITY REGULATIONS, WITH WHICH ALL INSTALLATIONS HERE IN MUST COMPLY. PLEASE KEEP INSTRUCTIONS FOR FUTURE REFERENCE.

Drill a 65mm diameter hole (deep enough to house sufficient cable to facilitate lamp changing) and two mounting holes at 75mm centres. Run the low voltage cable from the transformer (if the transformer is to be buried - installation of the transformer must be carried out by a licenced electrician to meet local Electrical Authority Regulations) to the Step Lite. Make a water proof connection using heavy walled adhesive lined heat shrink. Coil up a small amount of cable behind the fitting to allow it to be removed for lamp changing and screw into position using rawlplugs and screws provided.

**Recommendation:**

Run all low voltage cables in flexible conduit for extra protection.

Use Hunza Cable Joint Kit CJK#150.

**Warning:** Take care to place the luminaire in a suitably safe position, due to operating temperature of the luminaire.

**DO NOT** water blast/jet wash this fixture under any circumstances.

**Stainless Steel Maintenance:** To maintain the finish of 316 stainless steel it is recommended to wash the luminaire with fresh water from time to time to stop salt and corrosive elements building up. If tea staining appears, a commercially available stainless steel cleaner is recommended to remove this. Electro polishing is recommended in this situation but the fitting will still require regular maintenance. Even an electro polished stainless steel fixture under an eave or roof will suffer from the build up of salt deposits as it will not be washed away by rain.

### LAMP CHANGING

**CAUTION:** Make sure that the power to the luminaire is switched off before attempting to change the lamp. Beware of hot luminaire and lamp. Make absolutely sure when changing lamps that the correct wattage lamp is installed. Incorrect wattage lamps may cause HUNZA<sup>TM</sup> IG series transformers to overload causing them to heat up and turn the luminaires off.

**Lamp Changing Sequence (MR16)**

Only use MR16 lamps where the glass cover sits below the lip of the lamp. Unscrew flange, remove gasket and lens. Pull lamp forward until the ceramic lamp holder appears. Hold lamp holder in one hand and remove lamp with other hand very carefully. Do not touch the glass capsule in the middle of the reflector when pushing the lamp back into the ceramic lamp holder. When replacing gasket and lens, make sure there is no dirt or grit on the gasket. Dirt or grit on the gasket may cause luminaire to leak.

**Gasket and lens sequence**

Place lens on top of lamp and put orange gasket on top of lens. Screw on flange. It is recommended that high quality lamps are used when replacing lamps. Do not over tighten flange as this will make removal difficult and may cause lamp to break.

### LAMP DISPOSAL

Metal Halide and Fluorescent lamps contain small amounts of Mercury which can be harmful to the environment if the lamp is broken. Please contact your local authorities for information on the disposal of Metal Halide and Fluorescent lamps to ensure they are disposed of correctly .

