

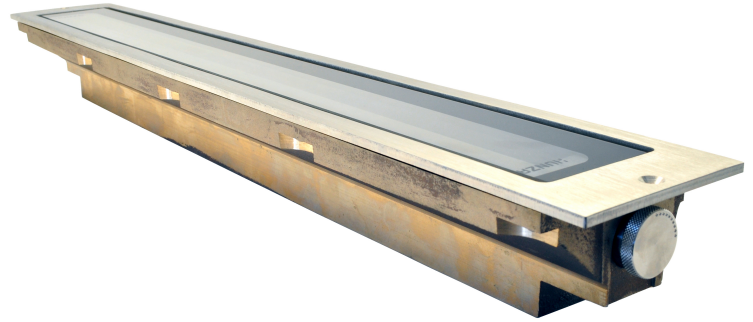
Cast Solid Bronze Adjustable Linear Lite

PROJECT:
TYPE:
SOURCE:
NOTES:

SPECIFICATIONS



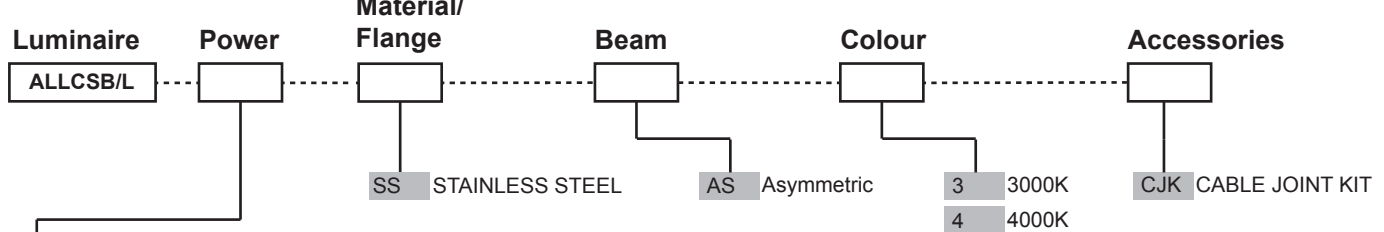
LED Chip	Cree J Series 3030 X 96 replaceable linear board
Luminaire Output	1000 Lumens @ 14.4 watts delivered from luminaire with 3000K unobstructed beam
Lumens Per Watt	70 Lumens minimum @ 14.4 watts delivered from luminaire with 3000K unobstructed beam
CRI (3000K)	90+ Standard
Colour Temperatures	3000K, 4000K
Beam Angles	Asymmetric
Ingress Protection	IP67
Warranty	Electronics = 5 years Body Cast Solid Bronze = 25 years
Standards	CE UL1598,2108,1838 (Pending)



PRODUCT CONFIGURATION

Please fill in appropriate codes into boxes provided

Cat. No. ALLCSB/L



- D24 24VDC Input, Parallel Wired
- R RETRO, 120-277VAC Input, Parallel Wired

24VDC REMOTE:
Constant voltage driver fixture requires 24vdc @ 700mA maximum.

RETRO 110-277vac DRIVER:
Constant Voltage driver (included).
Input: 120,240,277 volts.
Output: 17 watts total

ADDITIONAL COMMENTS:

LUMINAIRE CONSTRUCTION

Body:
CNC machined sand cast silicon bronze.

Flange:
CNC machined from 316 Stainless Steel 720mm x 100mm x 5mm (28^{3/8}" x 4" x 1/4")

All fixings are made from 316 Stainless Steel.

Step Lens:
10mm (25/64") Extra clear, low iron, shatter resistant glass.
Lifetime warranty.

Gaskets:
Silicone, iron impregnated 220°C (428°F).

Cable:
Water resistant rubber.

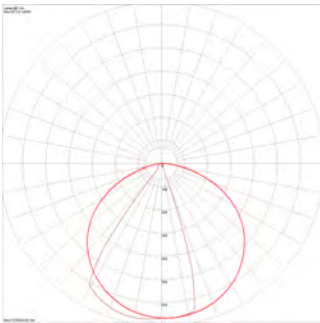
Adjustability:
The inner rotating body is fully adjustable, allowing 0-90° of rotation within the fixture.

Mounting:
The Adjustable Linear Lite comes with a 1.2mm stainless steel mounting canister for casting into the ground or concrete.

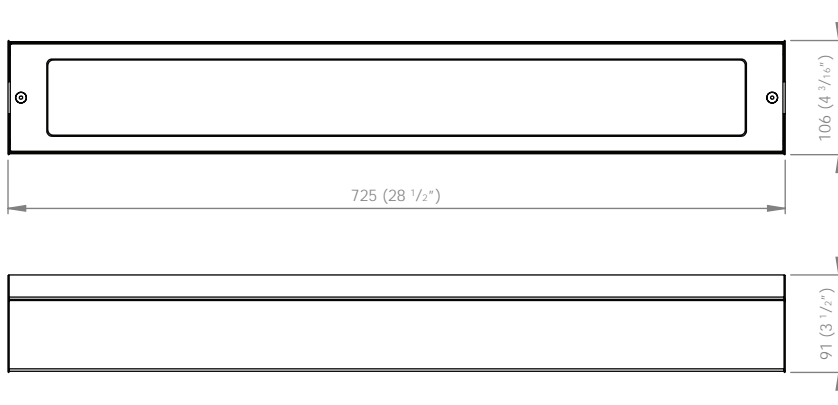
Luminaire Weight:
12.5kg (27lb 9oz)

BEAM ANGLES

IES files available for download: www.hunzalighting.com/download.php

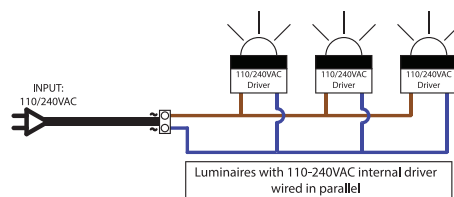
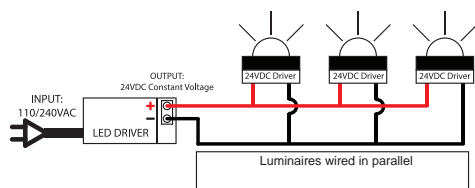


DIMENSIONS



WIRING GUIDE

available for download: www.hunzalighting.com/download.php



Diagrams are a guide only, wire colours and polarity may change depending on fixture and country