

Bollard 700

with PureLED

PROJECT:

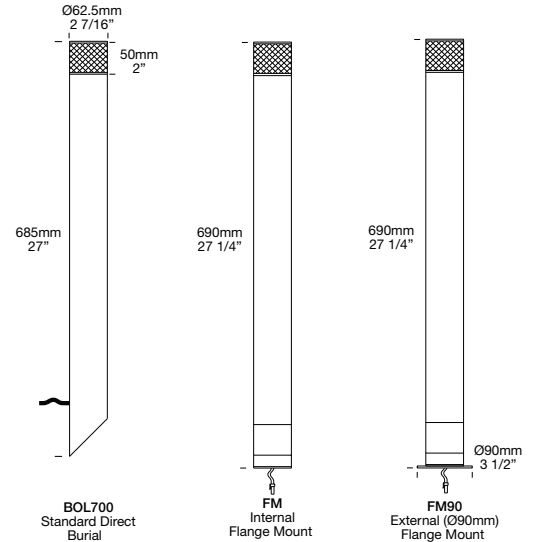
TYPE:

SOURCE:

NOTES:

PURELED SPECIFICATIONS

LED Chip	Cree XHP-50-2 Plug and Play field replaceable beam
Luminaire Output*	510 Lumens @ 1050mA (6 watts), 380 Lumens @ 700mA (4 watts), 160 Lumens @ 350mA (2 watts)
Lumens Per Watt*	85 lm/W*
CRI (3000K)	90+
Colour Temperatures	2700K, 3000K, 4000K
Beam Angles	360 degrees
Ingress Protection	IP56/IP66
Warranty	Electronics = 5 years Copper/Stainless Steel Body = 10 years Aluminium Body = 5 years
Standards	AS/NZS 61046, cUL 1838, 2108, CSA C22.2 No.250.7, No.250.0-08 CE



*delivered from luminaire with unobstructed beam.

PRODUCT CONFIGURATION

Please fill in appropriate codes into boxes provided

Cat. No. BOL700/L

Luminaire	Power	Material/Finish	Beam	Colour	Accessories	
<input type="text" value="BOL700/L"/>						
S	1050mA Input, Series Wired 6W	ALUMINIUM	EBK BLACK	360 360°	2 2700K	CJK CABLE JOINT KIT
D3	12VAC Input, Parallel Wired 2W		EBZ BRONZE	3 3000K	BOLOP OPAQUE LENS	
D7	12VAC Input, Parallel Wired 4W		EOGR OLIVE GREEN	4 4000K	HOOD140C HOOD 140MM CONTOURED	
D10	12VAC Input, Parallel Wired 6W		EWH WHITE		HOOD140S HOOD 140MM SMOOTH	
D24	24VDC Input, Parallel Wired		EWB WHITE BIRCH		GSBOL GLARE SHIELD *Reduces beam angle to 180°	
R	Retro Input, Parallel Wired		EDG DARK GREY		FM INTERNAL FLANGE MOUNT	
			ESTAR SILVER STAR		FM90 EXTERNAL FLANGE MOUNT 90MM	
			ECT CORTEN		EP ELECTRO POLISH *Only available for Stainless Steel*	
			COP SOLID COPPER			
			SS STAINLESS STEEL			

S
Series Wired - Remote Driver
(Required Not Supplied):
Constant current driver.
Individual fixtures require 6VDC @ 1050mA maximum

D3 D7 D10
12VAC Integral Driver (Supplied):
Hunza™ integrated plug and play driver
Input: 9-15VAC
Output: D3 = 6VDC @ 350mA
D7 = 6VDC @ 700mA
D10 = 6VDC @ 1050mA
(Note: 1050mA limited to ≤ 40°C (107°F) ambient temperature in stainless steel)

D24
24VDC Driver:
(24VDC Output Driver not supplied)
Input: 24VDC
Output: 6VDC @ 700mA constant current (non dimming)

OTHER LAMP OPTIONS:
 BOL700/H - MR16 Halogen 12V Lamp
 BOL700/SL - MR16 LED Retrofit 12V Lamp (lamps vary by market - please refer to supplier for details)
 BOL700/GUH - GU10 120/240V Halogen Lamp (body length increases for all GU10 lamps)
 BOL700/GUSL - GU10 LED Retrofit 120/240V Lamp (lamps vary by market - please refer to supplier for details)

[Click here for 240v Remote Power Supply Guidance Charts](#)
[Click here for USA Remote Power Supply Guidance Charts](#)

R
RETRO, 110-240VAC INPUT:
Constant voltage driver (included)
Input: 110-240 volts 5 watts
Output: 6VDC @ 700mA constant current (non dimming)

Feb 2024 V3

*Due to continued product enhancements, specifications may change without notification.

LUMINAIRE CONSTRUCTION

CNC machined from one of the following metals:

Aluminium:

Body: High corrosion resistant 63.5mm (2½") x 10mm (3/8") aluminium

Pole: 63.5mm (2½") aluminium

End Cap: Solid aluminium 63.5mm (2½") rod, with chromate substrate and high UV resistant polyester powder coat

Colours: Black, Bronze, Silver Star, White, White Birch, Olive Green, Dark Grey, Corten

Copper:

Body: 63.5mm (2½") x 10mm (3/8")

Pole: Solid copper 63.5mm (2½")

End cap: solid copper 63.5mm (2½") rod

316 Stainless Steel:

Body: 63.5mm (2½") x 10mm (3/8")

Pole: 316 stainless steel 63.5mm (2½")

End cap: Solid 316 stainless steel 63.5mm (2½") rod

Anti-Glare Hood:

140mm (5½") x 1.2mm (1/16") handspun aluminium, copper or stainless steel. No upward light or glare projected.

Lens:

UV stable polycarbonate lens with anti-glare mesh and dual angle reflector projects light horizontally and at 45° onto the ground.

Gaskets:

Silicone, iron impregnated 220°C (428°F)

Mounting:

Set in concrete in the ground or specify with flange mount option, which bolts to concrete, tiling or wooden decks.

Luminaire Weight:

Low voltage:

Alum: 0.870kg (1lb 15oz)

Cop: 2.290kg (5lb 1oz)

SS: 2.170kg (4lb 13oz)

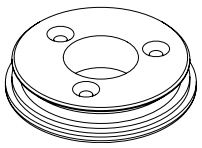
Retro™:

Alum: 2.700kg (5lb 15oz)

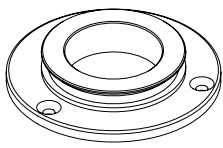
Cop: 5.200kg (11lb 7oz)

SS: 4.650kg (10lb 4oz)

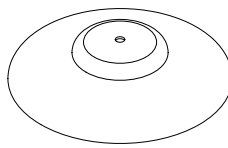
ACCESSORIES



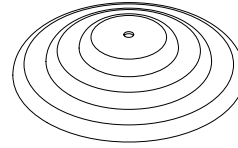
Flange Mount



Flange Mount 90mm



Hood 140mm Smooth

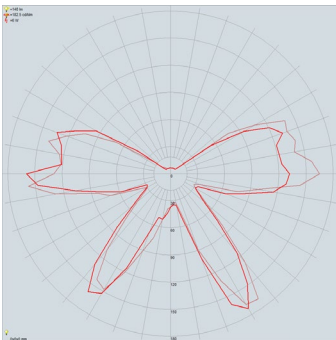


Hood 140mm Contoured

BEAM ANGLES

IES files available for download: hunzalighting.com/downloads

Polycarbonate lens



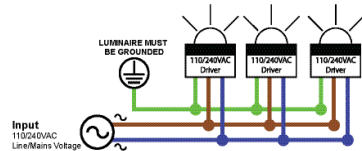
360° FWHM

WIRING GUIDE

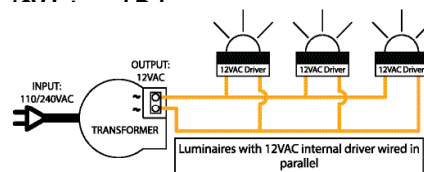
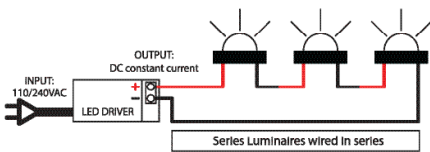
Available for download: hunzalighting.com/downloads

NOTE: Diagrams are a guide only, wire colours and polarity may change depending on fixture and country.

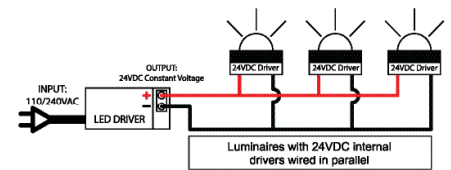
110/240V Integral Driver



Series/Remote Driver



24VDC Integral Driver



Feb 2024 V3

*Due to continued product enhancements, specifications may change without notification.