

**LED Retrofit Collection**  
*RL and RA Series*

**HALO**



**Cooper Lighting**

by **EATON**

# RL4 Series – 4" LED Retrofit Downlight

- Up to 650 lumens (lumens per selected CCT and CRI)
- Use to replace 60W PAR16, 50W PAR20 or 40W R20 lamp
- 2700K, 3000K, 3500K, 4000K Correlated Color Temperature (CCT)
- 80 CRI or 90 CRI
- 9.0W - 10.5W (Per CRI and CCT), 120V
- Halo matte white finish
- Push-N-Twist universal installation clips pre-installed
- Compatible with most 4" recessed housings
- Dimmable to 5% with select dimmers
- Damp and wet location listed (shower rated)
- Rated for IC, ICAT and may be used in Non-IC housings
- AIR-TITE™ certified per ASTM-E283
- Diffusing, regressed lens
- Five-year limited warranty



**Push-N-Twist  
Universal Installation Clip**



RL4 Energy Data	80 CRI	90 CRI
<b>Max. Lumens (4000K)</b>	650	600
<b>Input Voltage</b>	120V	
<b>Input Frequency</b>	50/60 Hz	
<b>Input Power</b>	9.0W - 10.5W (Per CRI and CCT)	
<b>Input Current</b>	0.075A - 0.0875A (Per input power)	
<b>Power Factor</b>	>0.90	
<b>THD</b>	<20%	
<b>EMI/RFI</b>	FCC Title 47 CFR, Part 15, Class B (Consumer)	
<b>Sound Rating</b>	Class A	
<b>Minimum Starting Temp</b>	-30°C (-22°F)	

## 90 CRI



Can be used to comply with California Title 24 High Efficacy requirements. Certified to California Title 20 Appliance Efficiency Database.

## 80 CRI



Can be used to comply with California Title 24 Non-Residential Lighting Controls requirements as a LED Luminaire.



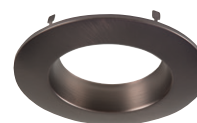
Refer to ENERGY STAR® Certified Products List.



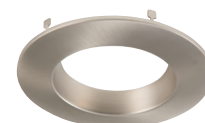
## RL4 Designer Trims (Order Separately)



**RL4TRMWH**  
White (Paintable)



**RL4TRMTBZ**  
Tuscan Bronze



**RL4TRMSN**  
Satin Nickel

## Ordering Information

Sample Number: **RL460WH830PK**

Order Halo housing separately.

## RL4 Models – 4" LED Retrofit Baffle - Trim

### 80 CRI

**RL460WH827PK**= 80 CRI, 2700K

**RL460WH830PK**= 80 CRI, 3000K

**RL460WH835PK**= 80 CRI, 3500K

**RL460WH840PK**= 80 CRI, 4000K

### 90 CRI

**RL460WH927PK**= 90 CRI, 2700K

**RL460WH930PK**= 90 CRI, 3000K

**RL460WH935PK**= 90 CRI, 3500K

**RL460WH940PK**= 90 CRI, 4000K

## LED Housings (Order Separately)

See Housing Compatibility, Page 10

## Accessories (Order Separately)

**RL4TRMSN**=Satin Nickel Trim Ring

**RL4TRMTBZ**=Tuscan Bronze Trim Ring

**RL4TRMWH**=White Paintable Trim Ring

**HE26LED**=Replacement screw base adapter (one included with unit)



**HE26LED**  
Edison Base Adapter  
for retrofit (included)

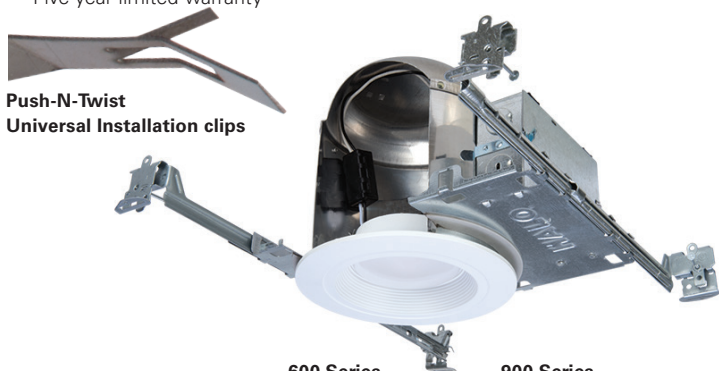


<sup>A</sup> Savings are over the life of the Halo RL4 luminaire.  
Energy savings: \$383  
Replacement lamp savings: \$166  
Savings based on \$0.155 per kilowatt hour, average six hours use per day, 50,000 hours of lamp usage, and 60W PAR16 Halogen lamp lumen equivalent.

# RL56 – 5" / 6" LED Retrofit Downlight

# 600 and 900 Series

- 600 Series: up to 700 lumens (lumens per selected CCT and CRI)  
900 Series: up to 1100 lumens (lumens per selected CCT and CRI)
- 600 Series: use to replace 65W BR30 or 50W PAR30 lamp  
900 Series: use to replace 75W PAR30 lamp
- 2700K, 3000K, 3500K, 4000K Correlated Color Temperature (CCT)
- 80 CRI or 90 CRI
- 600 Series: 9.0W - 10.5W (per CRI and CCT), 120V  
900 Series: 13.5W, 120V
- Halo matte white finish
- Push-N-Twist universal installation clips pre-installed
- Compatible with most 5" and 6" standard and shallow recessed housings
- Dimmable to 5% with select dimmers
- Damp and wet location listed (shower rated)
- Rated for IC, ICAT and may be used in Non-IC housings
- AIR-TITE™ certified per ASTM-E283
- Diffusing, regressed lens
- Five-year limited warranty



**Push-N-Twist  
Universal Installation clips**

**600 Series                      900 Series**

RL56 Energy Data	80 CRI	90 CRI	80 CRI	90 CRI
<b>Max. Lumens (4000K)</b>	700	650	1100	950
<b>Input Voltage</b>	120V			
<b>Input Frequency</b>	50/60 Hz			
<b>Input Power</b>	9.0W - 10.5W (Per CRI and CCT)		13.5W	
<b>Input Current</b>	0.15 A			
<b>Power Factor</b>	>0.90			
<b>THD</b>	<20%			
<b>EMI/RFI</b>	FCC Title 47 CFR, Part 15, Class B (Consumer)			
<b>Sound Rating</b>	Class A			
<b>Minimum Starting Temp</b>	-30°C (-22°F)			

## 90 CRI



Can be used to comply with California Title 24 High Efficacy requirements. Certified to California Title 20 Appliance Efficiency Database.



## 80 CRI



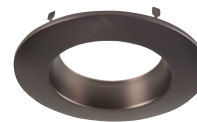
Can be used to comply with California Title 24 Non-Residential Lighting Controls requirements as a LED Luminaire.



## RL56 Designer Trims (Order Separately)



**RL56TRMWH**  
White (Paintable)



**RL56TRMTBZ**  
Tuscan Bronze



**RL56TRMSN**  
Satin Nickel

## Ordering Information

Sample Number: **RL560WH6827**

Order Halo housing separately.

## RL56 600 Series – 5" / 6" LED Retrofit Baffle - Trim

### 80 CRI

**RL560WH6827** = 80 CRI, 2700K  
**RL560WH6830** = 80 CRI, 3000K  
**RL560WH6835** = 80 CRI, 3500K  
**RL560WH6840** = 80 CRI, 4000K

### 90 CRI

**RL560WH6927** = 90 CRI, 2700K  
**RL560WH6930** = 90 CRI, 3000K  
**RL560WH6935** = 90 CRI, 3500K  
**RL560WH6940** = 90 CRI, 4000K

## RL56 900 Series – 5" / 6" LED Retrofit Baffle - Trim

### 80 CRI

**RL560WH9827** = 80 CRI, 2700K  
**RL560WH9830** = 80 CRI, 3000K  
**RL560WH9835** = 80 CRI, 3500K  
**RL560WH9840** = 80 CRI, 4000K

### 90 CRI

**RL560WH9927** = 90 CRI, 2700K  
**RL560WH9930** = 90 CRI, 3000K  
**RL560WH9935** = 90 CRI, 3500K  
**RL560WH9940** = 90 CRI, 4000K

## LED Housings (Order Separately)

See Housing Compatibility, Page 11

## Accessories (Order Separately)

**RL56TRMSN**=Satin Nickel Trim Ring

**RL56TRMTBZ**=Tuscan Bronze Trim Ring

**RL56TRMWH**=White Paintable Trim Ring

**OT400P**=Oversize Flat White Metal Trim Ring, 6" I.D. x 9-1/4" O.D. (Ring slips behind RL56 ring in stepped configuration.)

**OT403P**=Oversize White Plastic Trim Ring, 6" I.D. x 8" O.D. (Ring slips behind RL56 ring in stepped configuration.)

**TRM690WH**=Oversize Matte White Metal Trim Ring. Designed for RL56 ring to inset into oversize ring for an even (non-stepped) trim surface.

**HE26LED**=Replacement screw base adapter (one included with unit)



\* Savings are over the life of the Halo RL56 luminaire.  
Energy savings: \$430  
Replacement lamp savings: \$100  
Savings based on \$0.155 per kilowatt hour, average six hours use per day, 50,000 hours of lamp usage, and 65W BR30 Halogen lamp lumen equivalent.

Refer to ENERGY STAR® Certified Products List.

- Adjustable Gimbal for accent, task, grazing and downlighting
  - 35° Tilt, up to 360° rotation
- Beam distribution options
  - NFL - Narrow Flood (25°)
  - VWFL - Very Wide Flood (80°)
- Up to 640 lumens (lumens per selected CCT and CRI)
- Use to replace 40W R40 lamp (VWFL), or 60W PAR16 (NFL), or 50W PAR20 lamp (NFL)
- 2700K, 3000K Correlated Color Temperature (CCT)
- 90 CRI
- 10.0W, 120V
- Halo matte white finish
- Compatible with most 4" recessed housings
- Flexible mounting with friction blades
- Dimmable to 5% with select dimmers
- Damp location listed
- Rated for IC, ICAT and may be used in Non-IC housings
- Five-year limited warranty

\*Lumens per CCT and beam optic

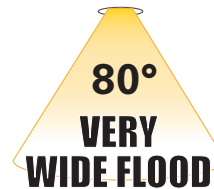


RA4 Energy Data	NFL	VWFL
<b>Max. Lumens (3000K)</b>	640	615
<b>Input Voltage</b>	120V	
<b>Input Frequency</b>	50/60 Hz	
<b>Input Power</b>	10W	
<b>Input Current</b>	0.85 A	
<b>Power Factor</b>	>0.90	
<b>THD</b>	<20%	
<b>EMI/RFI</b>	FCC Title 47 CFR, Part 15, Class B (Consumer)	
<b>Sound Rating</b>	Class A	
<b>Minimum Starting Temp</b>	-30°C (-22°F)	

## 90 CRI



Refer to ENERGY STAR® Certified Products List. Can be used to comply with California Title 24 High Efficacy requirements. Certified to California Title 20 Appliance Efficiency Database.



## Ordering Information

Sample Number: **RA406930WH**  
Order Halo housing separately.

### RA4 Models – 4" LED Adjustable Gimbal

#### Very Wide Flood – VWFL Models

**RA406927WH**= 90 CRI, 2700K  
**RA406930WH**= 90 CRI, 3000K

#### Narrow Flood – NFL Models

**RA406927NFLWH**= 90 CRI, 2700K  
**RA406930NFLWH**= 90 CRI, 3000K

### LED Housings (Order Separately)

See Housing Compatibility, Page 10

### Accessories

**HE26LED**=Replacement screw base adapter (one included with unit)



<sup>A</sup> Savings are over the life of the Halo RA4 luminaire. Energy savings: \$387  
Replacement lamp savings: \$166  
Savings based on \$0.155 per kilowatt hour, average six hours use per day, 50,000 hours of lamp usage, and 60W PAR16 Halogen lamp lumen equivalent.

# RA56 Series – 5" / 6" LED Retrofit

- Adjustable Gimbal for accent, task, grazing and downlighting
  - 35° Tilt, up to 360° rotation
- Beam distribution options
  - NFL - Narrow Flood (25°)
  - VWFL - Very Wide Flood (80°)
- Up to 670 lumens (lumens per selected CCT, CRI and beam optic.)
- Use to replace 65W BR30 lamp (VWFL) or 50W PAR30 lamp (NFL)
- 2700K, 3000K Correlated Color Temperature (CCT)
- 90 CRI
- 10.0W, 120V
- Halo matte white finish
- Compatible with most 5" and 6" standard and shallow recessed housings
- Flexible mounting with torsion springs or friction clips (included)
- Dimmable to 5% with select dimmers
- Damp location listed
- Listed use in IC, ICAT and may be used in Non-IC housings
- Five-year limited warranty



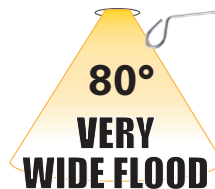
RA56 Energy Data	NFL	VWFL
<b>Max. Lumens (3000K)</b>	640	670
<b>Input Voltage</b>	120V	
<b>Input Frequency</b>	50/60 Hz	
<b>Input Power</b>	10W	
<b>Input Current</b>	0.85 A	
<b>Power Factor</b>	>0.90	
<b>THD</b>	<20%	
<b>EMI/RFI</b>	FCC Title 47 CFR, Part 15, Class B (Consumer)	
<b>Sound Rating</b>	Class A	
<b>Minimum Starting Temp</b>	-30°C (-22°F)	

## 90 CRI



Refer to ENERGY STAR® Certified Products List. Can be used to comply with California Title 24 High Efficacy requirements. Certified to California Title 20 Appliance Efficiency Database.

# Adjustable Gimbal



## Ordering Information

Sample Number: **RA5606930WH**  
Order Halo housing separately.

### RA56 Models – 5" / 6" LED Adjustable Gimbal

#### Very Wide Flood - VWFL Models

**RA5606927WH**= 90CRI, 2700K

**RA5606930WH**= 90CRI, 3000K

#### Narrow Flood - NFL Models

**RA5606927NFLWH**= 90CRI, 2700K

**RA5606930NFLWH**= 90CRI, 3000K

## LED Housings (Order Separately)

See Housing Compatibility, Page 11

## Accessories

**HE26LED**=Replacement screw base adapter (one included with unit)  
**RL56CLIP**=Replacement kit of 5" and 6" Friction Clips for retrofitting into an existing housing without torsion spring receiving brackets.  
(One set of clips included with the unit.)

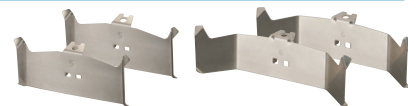
**OT400P**=Oversize Flat White Metal Trim Ring, 6" I.D. x 9-1/4" O.D.  
(ring slips behind RA56 ring in stepped configuration)

**OT403P**=Oversize White Plastic Trim Ring, 6" I.D. x 8" O.D.  
(ring slips behind RA56 ring in stepped configuration)

**TRM690WH**=Oversize Matte White Metal Trim Ring. Designed for RA56 ring to inset into oversize ring for an even (non-stepped) trim surface.

## Friction Clips

5" and 6" friction clips for retrofitting into an existing housing without torsion spring receiving brackets.



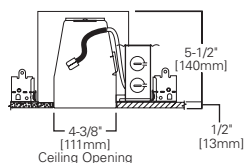
<sup>A</sup> Savings are over the life of the Halo RA56 luminaire.  
Energy savings: \$426  
Replacement lamp savings: \$100  
Savings based on \$0.155 per kilowatt hour, average six hours use per day, 50,000 hours of lamp usage, and 65W BR30 lamp lumen equivalent.

LED module is rated for installation in the following 4" HALO®, All-Pro™ and other housings.

<b>Halo LED</b>	H995ICAT, H995RICAT (Non-screw base, high-efficacy code compliant)
<b>Halo</b>	H99ICAT, H99RTAT, H99TAT
<b>All-Pro</b>	ET400ATSB, ET400RATSB, EI400ATSB
<b>Other Brands</b>	The RL/RA Series LED light module - trim combination is cULus Listed or UL Classified for use with any 4" diameter recessed housing constructed of steel or aluminum with an internal volume that exceeds 62.3 in <sup>3</sup> in addition to those noted above.

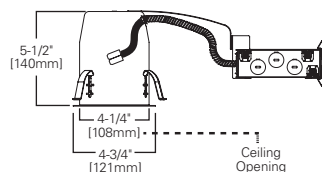
## H995ICAT

4" LED, IC, AIR-TITE, New Construction Housing



## H995RICAT

4" LED, IC, AIR-TITE, Remodel Housing



# Lighting Control Solution

## AL All-Load Series

Eaton's AL Series dimmers offer versatile options to set the mood and reduce energy consumption. These compatible LED dimmers are ideal for both residential and light commercial applications and are compatible with decorator (screwless) style devices and wallplates. Refer to [www.cooperwiringdevices.com](http://www.cooperwiringdevices.com) for additional information.



**ACCELL**  
(AAL06)



**DEVINE**  
(DAL06P)



**SKYE**  
(SAL06P)



**TRACE**  
(TAL06P)



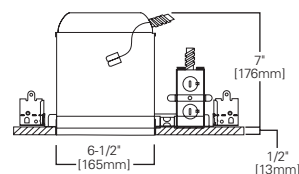
LED module is rated for installation in the following 5" and 6" HALO®, All-Pro™ and other housings.

<b>Halo 5" LED</b>	H550ICAT, H550RICAT (Non-screw base, high-efficacy code compliant)
<b>Halo 6" LED</b>	H2750ICAT, H750ICAT, H750T, H750TCP, H750RICAT, H750RINTD010 (Non-screw base, high-efficacy code compliant)
<b>Halo 5"</b>	H5T, H5RT, H5TM, H5ICAT, H5RICAT, H25ICAT
<b>Halo 6"</b>	H7ICT, H7ICAT, H7T, H7ICATNB, H7ICTNB, H7TNB, H7UICAT, H7UICAT, H7TCP, H7RICAT, H7RICT, H7RT, H27T, H27RT, H27ICAT, H27ICT, H27RICAT, H27RICT
<b>Halo LED Retrofit</b>	ML7BXRFFK, ML7E26RFFK
<b>All-Pro 5"</b>	EI500AT, EI500RAT, ET500, ET500R
<b>All-Pro 6"</b>	EI700, EI700AT, EI700ATNB, EI700U, EI700UAT, EI700NB, EI700R, EI700RAT, ET700, ET700R, EI2700, EI2700AT, EI2700R, ET2700, ET2700R
<b>Other Brands*</b>	The RL/RA Series LED light module - trim combination is cULus Listed or UL Classified for use with any 5"/6" diameter recessed housing constructed of steel or aluminum with an internal volume that exceeds 107.9 in <sup>3</sup> in addition to those noted above.

\*When using RA56 for retrofit some housings will not have torsion spring receiver brackets –use Halo ML7RAB retrofit adapter band (order separately)

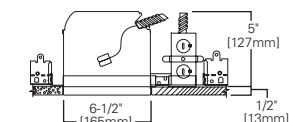
## H750ICAT

6" LED, IC, AIR-TITE, Standard New Construction Housing



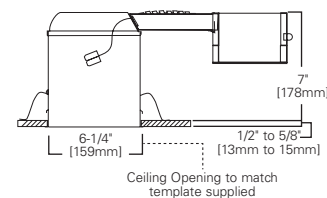
## H2750ICAT

6" LED, IC, AIR-TITE, Shallow New Construction Housing



## H750RICAT

6" LED, IC, AIR-TITE, Standard Remodel Housing



## **Eaton's Cooper Lighting Business**

### **Headquarters**

1121 Highway 74 South  
Peachtree City, GA 30269  
P: 770-486-4800  
[www.eaton.com/lighting](http://www.eaton.com/lighting)

### **Canada Sales**

5925 McLaughlin Road  
Mississauga, Ontario L5R 1B8  
P: 905-501-3000  
F: 905-501-3172

### **Our Lighting Product Brands**

Halo  
Halo Commercial  
Portfolio  
IRiS  
RSA  
Metalux  
Corelite  
Neo-Ray  
Fail-Safe  
MWS  
Ametrix  
Shaper  
io  
Lumark  
McGraw-Edison  
Invue  
Lumière  
Streetworks  
AtLite  
Sure-Lites

### **Our Controls Product Brands**

Greengate  
iLumin  
Zero 88  
Fifth Light Technology  
iLight (International Only)

#### **Eaton**

1000 Eaton Boulevard  
Cleveland, OH 44122  
United States  
[Eaton.com](http://Eaton.com)

#### **Eaton's Cooper Lighting Business**

1121 Highway 74 South  
Peachtree City, GA 30269  
P: 770-486-4800  
[www.Eaton.com/lighting](http://www.Eaton.com/lighting)

© 2015 Eaton  
All Rights Reserved  
Printed in USA  
Publication No. BR518002EN  
April 2015

Products, specifications and compliances are subject to change without notice.

Eaton is a registered trademark.

All other trademarks are property of their respective owners.



*Powering Business Worldwide*